



GOVERNMENT OF NEPAL

Preliminary Results of National Economic Census 2018 of Nepal



**National Planning Commission
Central Bureau of Statistics**

Kathmandu, Nepal

September 2018



GOVERNMENT OF NEPAL

Preliminary Results of National Economic Census 2018 of Nepal



**National Planning Commission
Central Bureau of Statistics**

Kathmandu, Nepal

September 2018

Contents

	Page
Foreword.....	iii
Map of Nepal by District.....	v
Figures at a Glance.....	vii
 SECTION I: Outline	
Outline of National Economic Census 2018 of Nepal	I-3
Brief Analysis of Preliminary Results.....	I-7
 SECTION II: Graphs	
Graph 1. Percent to Total Number of Establishments of Nepal by Province in 2018 and Percent to Total Population of Nepal by Province in 2018 (Provisional).....	II-3
Graph 2. Establishment Density in 2018 and Population Density in 2018 by Province (Provisional).....	II-3
Graph 3-1. Provisional Number of Establishments per 1,000 Persons by Province in 2018.....	II-4
Graph 3-2. Provisional Population per Establishment by Province in 2018.....	II-4
Graph 4. Percent to Total Number of Persons Engaged of Nepal by Province in 2018 and Percent to Total Population of Nepal by Province in 2018 (Provisional).....	II-5
Graph 5. Sex Ratio of Persons Engaged by Province in 2018 (Provisional).....	II-5
 SECTION III: Maps	
Map 1. Provisional Number of Establishments by District in 2018.....	III-3
Map 2. Provisional Establishment Density by District in 2018.....	III-4
Map 3-1. Provisional Number of Establishments per 1,000 Persons by District in 2018.....	III-5
Map 3-2. Provisional Population per Establishment by District in 2018.....	III-6
Map 4. Provisional Number of Persons Engaged by District in 2018.....	III-7

Map 5-1. Provisional Sex Ratio of Number of Persons Engaged by District in 2018.....	III-8
---	-------

Map 5-2. Provisional Number of Persons Engaged per Establishment by District in 2018.....	III-9
--	-------

SECTION IV: Tables

Table 1. Provisional Number of Establishments, Percent to Total, and Rank by District in 2018.....	IV-3
---	------

Table 2. Provisional Establishment Density and Rank by District in 2018.....	IV-5
--	------

Table 3-1. Provisional Number of Establishments per 1,000 Persons by District in 2018.....	IV-7
---	------

Table 3-2. Provisional Population per Establishment by District in 2018.....	IV-9
--	------

Table 4. Provisional Number of Persons Engaged, Percent to Total, and Rank by District in 2018.....	IV-11
--	-------

Table 5. Provisional Number of Persons Engaged by Sex and District in 2018.....	IV-13
--	-------

SECTION V: Appendices

Appendix 1: Specimen of Form B.....	V-3
-------------------------------------	-----

Appendix 2: Coverage of National Economic Census 2018 of Nepal	V-13
--	------

Appendix 3: Specimen of Enumerator's Control Form (Summery Sheet).....	V-15
--	------

FOREWORD

It is our great pleasure to officially release the preliminary census results of the 2018 National Economic Census of Nepal (NEC2018) which was conducted from 14 April 2018 to 14 June 2018, covering the entire territory of Nepal. Historically, it was the first Economic Census in Nepal as a complete count of all establishments. It is underway the processing of filled in forms for the final results of the Economic Census 2018. Under the legal basis of the Statistics Law and state decree published by Government of Nepal, the NEC2018 aims at compiling basic statistics on establishments in the whole Nepal's territory.

This report on preliminary census results contains statistical tables, graphs and maps derived from the information contained in the enumerator's control form. The preliminary census results provide limited information on the current situation of establishments in Nepal and serve for various users such as policy makers, government officials at both national and local levels, international organizations, NGOs, private sectors, researchers, and development partners. The preliminary census results will contribute to achieving the socio-economic development goals the Government in supporting evidence-based planning. I am sure that the users will be very much benefitted to use the NEC2018 results to the full extent possible.

We express our deep sense of gratitude to the various Government agencies, and other agencies for the constant support to the statistical activities, especially to the NEC2018 which enabled very successful completion of the census. I gratefully acknowledge technical assistance provided by the Government of Japan and Japan International Cooperation Agency (JICA) in the capacity development for the implementation of the first Economic Census in Nepal.

I would like to thank Economic Census Steering Committee, Technical Committee, Joint Coordinating Committee, Media Campaign Committee, and District Economic Census Coordination Committee, which provided various kinds of facilitation for the implementation of the NEC2018.

The NEC2018 is one of the greatest statistical exercises, and its successful completion was possible with the total help and cooperation received from one and all. The major share of the credit for the success of the NEC2018 should go to the entrepreneurs of small,

medium and large establishments who paid busy and valuable time of their daily business to provide information to the NEC2018 Forms via different modes of data collection.

Deep thanks are also given to enumerators, supervisors, and District Census Officers and the staff of 77 District Economic Census Offices, and CBS staff who were devoted, hard work, and loyal in making census operation successful. I would like to thank Mr. Nebin Lal Shrestha, Deputy Director General, Social Statistics Division, and Mr. Hem Raj Regmi, Deputy Director General, Economic Statistics Division of the bureau for their valuable contribution and leading roles in the census. Mr. Anil Sharma, Mr. Mahesh Chand Pradhan, Directors of the Economic Census Section deserve special thanks for their lead role in the overall census operation. I also would like to thank Mr. Prakash Pokharel, Mr. Bikash Malla, and Mr. Kapil Dev Joshi, Statistical Officers, and Suresh Prasad Kayastha and Khadga Bahadur Rana, Computer Officers for their contribution in the operation from preparatory works to the management of the field work and data processing respectively. I appreciate Mr. Shailendra Ghimire, Director for handling census enumeration mapping. I also thank to Mr. Rajesh Dhital for his contribution in the pre census phase. Similarly, I heartily appreciate for directors, statistical officers who supported the census making successful in different stages. Our deep thanks are due to Mr. Fumihiko Nishi, Chief Adviser and other experts of “Project on Capacity Development for the implementation of Economic Census 2018 in Nepal” supported by JICA, who made all the best efforts in the success of the implementation of the NEC2018.

I hope, this report on preliminary census results will be very useful and meet the demand of the users to the extent most. CBS always welcomes comments and suggestions from users which would be valuable for the improvement of our future publications.

September, 2018

Suman Raj Aryal
Director General
Central Bureau of Statistics
Kathmandu, Nepal

Index Map of Administrative Areas in Nepal by Province and District



Legend

- National Boundary
 - Provincial Boundary
 - District Boundary
 - River
- 000 District Code

Code of Province / District

1 PROVINCE No.1

- 101 Taplejung
- 102 Sankhuwasabha
- 103 Solukhumbu
- 104 Okhaldhunga
- 105 Khotang
- 106 Bhojpur
- 107 Dhankuta
- 108 Terhathum
- 109 Panchthar
- 110 Ilam
- 111 Jhapa
- 112 Morang
- 113 Sunsari
- 114 Udayapur

2 PROVINCE No.2

- 201 Saptari
- 202 Siraha
- 203 Dhanusa
- 204 Mahottari
- 205 Sarlahi
- 206 Rautahat
- 207 Bara
- 208 Parsa

3 PROVINCE No.3

- 301 Dolakha
- 302 Sindhupalchok
- 303 Rasuwa
- 304 Dhading
- 305 Nuwakot
- 306 Kathmandu
- 307 Bhaktapur
- 308 Lalitpur
- 309 Kavrepalanchok
- 310 Ramechhap
- 311 Sindhuli
- 312 Makwanpur
- 313 Chitawan

4 PROVINCE No.4

- 401 Gorkha
- 402 Manang
- 403 Mustang
- 404 Myagdi
- 405 Kaski
- 406 Lamjung
- 407 Tanahu
- 408 Nawalparasi East
- 409 Syangja
- 410 Parbat
- 411 Baglung

5 PROVINCE No.5

- 501 Rukum East
- 502 Rolpa
- 503 Pyuthan
- 504 Gulmi
- 505 Arghakhanchi
- 506 Palpa
- 507 Nawalparasi West
- 508 Rupandehi
- 509 Kapilbastu
- 510 Dang
- 511 Banke
- 512 Bardiya

6 PROVINCE No.6

- 601 Dolpa
- 602 Mugu
- 603 Humla
- 604 Jumla
- 605 Kalikot
- 606 Dailekh
- 607 Jajarkot
- 608 Rukum West
- 609 Salyan
- 610 Surkhet

7 PROVINCE No.7

- 701 Bajura
- 702 Bajhang
- 703 Darchula
- 704 Baitadi
- 705 Dadeldhura
- 706 Doti
- 707 Achham
- 708 Kailali
- 709 Kanchanpur

* Codes and boundaries are as of November 2, 2017.

Preliminary Results of National Economic Census 2018 of Nepal

Figures at a Glance

Number of Provinces	7
Number of Districts	77
Number of Metropolitan Cities (<i>maha-nagarपालिका</i>)	6
Number of Sub-metropolitan Cities (<i>upa-maha nagarpalika</i>)	11
Number of Municipalities (<i>nagarपालिका</i>)	276
Number of Rural Municipalities (<i>gaunपालिका</i>)	460
Number of Wards	6,743
Number of Establishments	922,445
Number of Establishments per km ²	6.3
Number of Establishments per 1,000 Persons	31.6
Population per Establishment	31.7
Number of Persons Engaged	3,408,746
Male	2,044,989
Female	1,363,757
Sex Ratio of Number of Persons Engaged (number of males per 100 females)	150.0
Number of Persons Engaged per Establishment	3.7

SECTION I:

Outline

- * The preliminary results are sorted out based on the new administrative areas as of 14 April 2018.
- ** The preliminary results were aggregated from the enumerator's control forms (summary sheets) which were filled in by enumerators and checked by supervisors. Therefore, the preliminary results might slightly be different from the final results which are based on Form B.

Outline of National Economic Census 2018 of Nepal

1. What is economic census?

In simple terms, an economic census is the census of economy through counting all units of economic activities in the country. However, an economic census is the total process of collecting, compiling, evaluating, analyzing, and publishing. In addition, it disseminates data pertaining, at a specified time, to all establishments in a country or in a well delimited part of a country.

2. Purpose of the Census

The National Economic Census 2018 (hereafter the Census) aims:

- a) to provide with the fundamental statistics on the status of the business activities of the establishments and enterprises including the financial aspects;
- b) to provide statistics to central, provincial and local governments for the formulation of plan and policy-making;
- c) to provide statistics to strengthen national accounting system;
- d) to make a base for statistical business register;
- e) to provide statistics of related field to the business owners or experts, researchers and other statistics users to formulate plans and policies for the prosperity of their business;
- f) to provide with the directories of establishments and enterprises for the sampling frame of various sample surveys on businesses.

3. Reference date of the Census

The Census was taken as of 14 April 2018. The confirmation of Enumeration Area, the establishment listing, e-Census, and the enumeration were simultaneously conducted within a two-month period from 14 April to 14 June 2018.

3.1 Area to be covered by the Census

The Census covered all areas throughout the country.

4. Legal basis of the Census

The Census was taken on the basis of the following legislation:

- a) Statistics Act 1958;
- b) State Decree on National Economic Census 2018 approved by the Council of Ministers on 12 January 2018 and published on 15 March 2018.

5. Coverage of the Census

The Census covers all establishments which exist at the reference date in the

territory of Nepal.

The following establishments, however, are excluded:

- a) Non-registered establishments classified into “Section A, Agriculture, forestry and fishing” specified in the United Nations International Standard Industrial Classification of Economic Activities, Revision 4 (ISIC),
- b) Establishments classified into “Section O, Public administration and defense; compulsory social security” specified in the ISIC,
- c) Establishments classified into “Section T Activities of households as employers; undifferentiated goods-and services-producing activities of households for own use” specified in the ISIC,
- d) Establishments classified into “Section U, Activities of extraterritorial organizations and bodies” specified in the ISIC.

6. Enumeration units

The enumeration unit in the Census was considered as “establishment”. The establishment was defined as follows, according to UN definition:

The establishment is defined as an economic unit that engages, under a single ownership or control - that is, under a single legal entity - in one, or predominantly one, kind of economic activity at a single physical location – for example, a mine, factory or workshop.

In addition, movable establishments such as street business which are doing business at the same place are included. But the mobile establishments which don't have any fixed place for business operation are not included in the Census.

7. Organization

Central Bureau of Statistics (hereafter CBS) has the responsibility of the Census operation from planning stage to dissemination stage. In brief, the organization of the Census is shown as follows:

- a) Chain of command

[Census Line]

Director General of CBS → Deputy Director General of Economic Statistics Division → Directors of Economic Census Section → District Census Officers, District Economic Census Offices → Area Census Officers/ Area Supervisor → Supervisors → Enumerators

- b) District Census Office

In Nepal, 77 District Census Offices were established headed by District Census Officers for the period of four months from March 14 to July 14, 2018 for the Census enumeration. District Census Officers were appointed among from Directors, Officers, or Statistical Assistants of Statistics Offices (SOs), or were seconded from offices other than CBS or Statistics Offices in

the districts.

c) Area Census Office (Local Level Economic Census Office)

At most 45 Local Level Economic Census Offices were established in the designated districts for the smooth operation of the Census. The offices were headed by Officers (in Kathmandu) and Assistant Officers in other designated districts. Area Census Officers or Area Supervisors were deputed from among the staff of CBS or SOs.

d) Supervisor

The supervisors were employed temporarily for the Census, and were seconded from qualified staff of CBS/SOs or other offices. Each supervisor was assigned a certain number of enumerators to accomplish their duties which are described in Supervisor's Manual.

e) Enumerator

The enumerators were employed temporarily for the Census. Each enumerator was assigned one enumeration area which have been demarcated to accomplish their duties which are described in Enumerator's Manual.

8. Method of the Census enumeration

Two kinds of the Census tools, namely, Form A (Listing form) and Form B (main questionnaires) were used for the enumeration of establishments. The following methods were employed for the data collection:

- a) Response through Internet, that is, e-Census;
- b) Individual enumeration by enumerator, identify targeting establishments based on the definition mentioned in the above 6, interview the representative of the identified establishment, and fill in Form B (or enter responses through electronic Form B on a tablet computer);

The individual enumeration was carried out through the method that an enumerator visited each establishment within a certain enumeration area, interviews the owner or manager of the establishment or his/her substitute who is entitled to represent the establishment, and filled in the Census form. In addition to this, the self-enumeration method could be applied to the establishment, which requests to fill in the form by themselves. In case that the enumeration did not finish due to reason of establishments, Supervisors and Census Officers followed up the enumeration.

9. Pretest

Several pretests of forms were carried out in selected some EAs in 2016/2017. The pretests aimed to test form-designing, enumeration methods, instructions to be included in Enumerators' Manual and so on, and its results

have been utilized for making appropriate plans for the Census.

10. Pilot survey

- a) The survey was carried out as of 14 April 2017 (one year before the Census date) within one and half months from 14 April to 31 May 2017 in selected Enumeration Areas of designated 66 districts under 33 Statistics Offices. This survey was a rehearsal of the real economic census.
- b) The pilot survey aimed:
 - (i) to test the final draft of the Census forms and other documents;
 - (ii) to test work procedures of every stage of enumerators, supervisors, district statistics office, and CBS.

11. Seminar/ Workshops/ Meetings/ Training Courses

- a) An inception seminar was organized in February 28, 2017 to inform the stakeholders about the first economic census in Nepal as well as to get feedbacks or data demand from the economic census. Similarly, a number of awareness seminars were conducted at the central level as well as in district level to sensitize users about the first census in Nepal.
- b) Form/ manual preparation workshops were also carried out for the drafting of the Census forms and manuals with the aims of smooth conduction of training courses as well as the Census enumeration. Similarly, a feedback workshop of the pilot survey was organized for three days to get suggestions and feedbacks to contribute to the betterment of the real economic census.
- c) The meetings of National Steering Committee, Technical Committee, Media Campaigning Committee, and Joint Coordinating Committee (JCC) were also held in pre-census phase for the planning and implementation of the Census.
- d) A number of training courses, namely, Master Trainers' training, Census Officers' training courses, Area Census Officers/Area Supervisors training courses, and Supervisors/Enumerators' training courses were conducted for five days at the central level as well as district level during the Census implementation phase. The training courses were based on the Census objectives, roles and responsibilities, the Census forms and manuals for achieving good quality of data at field with consistent knowledge.

Brief Analysis of Preliminary Results

1. Total number of establishments was 922,445 in Nepal. (Refer to Table 1 and Map 1.)

The preliminary results of the National Economic Census 2018 (NEC2018) provide the current situation of establishments in Nepal in the recovery process after the huge earthquakes which occurred in April and May 2015. The figures were aggregated from the enumerator's control forms (summary sheets) which were filled in by enumerators and checked by supervisors. Therefore, the preliminary results might slightly be different from the final results which are based on Form B and will be released around June 2019.

There were 922,445 establishments in Nepal as of 14 April 2018 as the preliminary results of the NEC2018 implemented by the Central Bureau of Statistics (CBS). The NEC2018 covered all areas in the country without exception and all establishments excluding the following establishments: non-registered establishments which belong to "Agriculture, forestry, and fishery" (Section A) of International Standard Industrial Classification (ISIC) Rev. 4; and all those establishments which belong to "Public administration and defense; compulsory social security" (Section O), "Activities of household as employers" (Section T), and "Activities of extraterritorial organizations and bodies" (Section U) of ISIC. In addition, Mobile establishments were also excluded. These exclusions are in accordance with international common practices in economic censuses. (Refer to Outline and Appendix 2.)

Nepal has 922,445 establishments and the number of establishments per 1,000 persons is 31.6 establishments. As compared with other countries, Japan has 5.8 millions and 45.4; Indonesia 26.7 millions and 104.6; Sri Lanka 1.0 million and 50.3; and Cambodia 0.5 million and 34.6; respectively. Among these five countries, Nepal has relatively fewer establishments for its population size. This is probably due to geographical disadvantage such as upcountry and mountainous. ¹⁾

1) *The data sources are the 2014 Population Estimates and the 2014 Economic Census for Japan, the 2015 Population Estimates and the 2016 Economic Census for Indonesia, the 2011 Population Census and the 2013 Economic Census for Sri Lanka, and the 2011 Population Estimates and the 2011 Economic Census for Cambodia. There are some slight differences in the definition of the establishment among five countries.*

The biggest district in terms of the number of establishments was Kathmandu with 123,994 establishments or 13.4% to the total number of Nepal, followed by Jhapa (38,741 or 4.2%), Rupandehi (38,415 or 4.2%), Morang (35,237 or 3.8%), and Sunsari (31,486 or 3.4%). These five districts are located in the Kathmandu valley or in plain areas, occupying nearly 30% of the total number of establishments in Nepal.

The Kathmandu valley is made up of Kathmandu District with 123,994 establishments, Lalitpur District (27,009), and Bhaktapur District (19,629). In total, there are 170,632 establishments, occupying 18.5% of the total number of establishments in Nepal. On the other hand, the population in the Kathmandu valley was about three millions, occupying about 10% only of the total population in Nepal. It means that establishments are more concentrated in the Kathmandu valley than population.

Kathmandu district is the capital of Nepal, and is located in the Kathmandu Valley where is positioned almost in the center of Nepal. Kathmandu has a gigantic size of the number of establishments. This can be said due to the population of Kathmandu with more than two millions as of 2018 and its recent rapid population increase. In addition, its functions as the capital of Nepal are also included, that is, ministries and agencies, universities, institutes, international organizations, embassies, head offices of many enterprises, medias, an international airport, bus terminals, hotels, shopping malls, entertainments, etc.

Jhapa district is the easternmost district of Nepal, where lies in the fertile Terai plains, and is the east end of Mahendra Highway which runs across the entire width of the country. The population of Jhapa is about 876 thousands, and is the fifth place in 77 districts. The district headquarters is Bhadrapur where can easily access from Kathmandu by air. Major market centers are Damak, Gauradaha, Bhadrapur-Chandragadhi, Birtamod, Surunga, Arjundhara, Mechinagar etc. Major industries in Jhapa are tea, cement, plywood, and retail trade.

Rupandehi district is located on a flat plain. Bhairahawa, Butwal, Murgiya, Manigram, Lumbini, Mangalapur, and Shankar nagar are some of the major market centers of the district. The main industries in Rupandehi are banking, microfinance, pharmaceutical, and tourism. Especially, Lumbini is a center of tourism because there is the birthplace of Lord Buddha, and is granted World

Heritage status by UNESCO in 1997. Since there are a number of temples including the Mayadevi Temple, thousands of Buddhist monks, pilgrims and tourists visit Lumbini annually and there are a lot of hotels, guesthouses, restaurants, drink shops, and so on.

Morang district is located in the eastern part of Nepal, and lies in the fertile Terai plains. Since Morang is one of the most industrial areas in Nepal, there are huge numbers of industries and factories such as plastic product, plywood, and others. Especially, jute mill is an old industry here. Morang has the second largest population in Nepal. The district headquarters is Biratnagar where can easily access from Kathmandu by air.

Sunsari district is also located in the eastern part of Nepal, and lies in the fertile Terai plains. Since Sunsari is also one of the most industrial areas in Nepal, there are huge numbers of industries and factories commencing with Dharan Industrial Estate and Sunsari Morang Industrial Corridor. Its major products are sugar, fiber, cable, valves, fittings, pharmaceuticals, biscuits, confectionaries, and others.

Meanwhile, the smallest district was Manang with 487 establishments or 0.1% to the national total perhaps reflecting the fact that its area is mountainous and is sparsely inhabited, followed by Mustang (775 or 0.1%), Dolpa (861 or 0.1%), Rukum East (1,020 or 0.1%), and Rasuwa (1,375 or 0.1%). These five districts are located in the north side of the country, namely, in the Himalayan mountain range except Rukum East where lies in the mid-western hilly region of Province 5.

2. Establishment density was 6.3 establishments per km² in Nepal. (Refer to Table 2 and Map 2.)

The establishment density of Nepal is 6.3 establishments per km². As compared with other countries, Japan was 15.3; Indonesia 13.9; Sri Lanka 15.5; and Cambodia 2.8; respectively. Among these five countries, the establishment density of Nepal is relatively lower for its area size. This is probably due to geographical disadvantage such as upcountry and mountainous. ¹⁾

The highest district in terms of the establishment density was Kathmandu with 313.9 establishments per km², followed by Bhaktapur (164.9), Lalitpur (70.2), Rupandehi (28.2), and Sunsari (25.0). The first three districts are located in the Kathmandu Valley and the remaining last two districts lies in the southern plain

areas of the country.

Bhaktapur district is located in the east corner of the Kathmandu Valley and there are three major industries: tourism, brickmaking, and pottery production. Especially, Bhaktapur city is listed as a World Heritage Site by UNESCO with a central focus on Bhaktapur Durbar Square surrounded by a lot of hotels, guesthouses, restaurants, drink shops, and so on.

Lalitpur district is located in the south corner of the Kathmandu Valley. The district headquarters is Lalitpur city where is the third largest city of Nepal. Especially, Patan Durbar Square is listed as a World Heritage Site by UNESCO and is surrounded by a lot of hotels, guesthouses, restaurants, drink shops, and so on. In addition, there are many small-scale cottage industries and traditional handicrafts which have produced renowned artists and finest craftsmen.

Meanwhile, the lowest district was Dolpa with 0.1 establishments per km² corresponding to the fact that it has the lowest population density in all districts. Dolpa was followed by Manang (0.2), Mustang (0.2), Humla (0.4), and Mugu (0.5). These five districts are located in the north side of the country, that is, in the Himalayan mountain range.

3-1. Number of establishments per 1,000 persons was 31.6 establishments in Nepal. (Refer to Table 3-1 and Map 3-1.)

The highest district in terms of the number of establishments per 1,000 persons was Manang with 76.2 establishments, followed by Mustang (64.7), Kathmandu (58.3), Bhaktapur (55.3), and Kaski (54.4). With regard to Kathmandu, Bhaktapur, these two districts are located in the central part in Province 3 of the country, while Kaski lies in western part in Gandaki Province being more competitive areas for business. Although both Manang and Mustang are showing very high values, this is due to a small population size.

Kaski district is located in the Gandaki Province of Nepal. The district headquarters is Pokhara where is a major tourist destination, for example, the base for the famous Annapurna Circuit trek and panoramic views of mountains and lakes. As a result, service-sector industries have increasingly contributed to the local economy.

Meanwhile, the lowest district was Achham with 15.2 establishments per 1,000 persons, followed by Bara (15.6), Rautahat (15.8), Baitadi (16.7), and Doti

(17.2). It means that there is room to have more establishments in these five districts as compared with their population. Among these five districts, Bara and Rautahat are the districts of Province No. 2 while the remaining three districts are located in Province No. 7.

3-2. Population per establishment was 31.7 persons in Nepal. (Refer to Table 3-2 and Map 3-2.)

The highest district was Achham with 65.7 persons per establishment, followed by Bara (64.0), Rautahat (63.2), Baitadi (59.8), and Doti (58.3). They have relatively more population per establishment and room to have more establishments.

Meanwhile, the lowest district in terms of the population per establishment was Manang with 13.1 persons, followed by Mustang (15.5), Kathmandu (17.1), Bhaktapur (18.1), and Kaski (18.4). Although both Manang and Mustang are showing very low values, this is due to a small population size.

4. Number of persons engaged was 3,408,746 persons in Nepal. (Refer to Table 4 and Map 4.)

The biggest district in terms of the number of persons engaged was Kathmandu with 575,003 persons or 16.9% to the total number of Nepal, followed by Rupandehi (163,045 or 4.8%), Morang (143,386 or 4.2%), Lalitpur (139,686 or 4.1%), and Jhapa (129,180 or 3.8%). These five districts occupies more than one third of the total number of persons engaged in Nepal.

Meanwhile, the smallest district was Manang with 2,375 persons engaged or 0.1% to the national total perhaps reflecting the fact that its area is mountainous and is sparsely inhabited, followed by Rukum East (2,753 or 0.1%), Mustang (3,105 or 0.1%), Dolpa (3,109 or 0.1%), and Rasuwa (4,851 or 0.1%). These five districts are located in the north side of the country, namely, in the Himalayan mountain range except Rukum East in hill of Province No. 5.

5-1. Sex Ratio of persons engaged is 150.0 in Nepal. (Refer to Table 5 and Map 5-1.)

The sex ratio in Nepal is 150.0. This means that about 150 males are engaged in the establishments for every 100 engaged females. As compared with other countries, Japan is 125.7; Indonesia 183.9 ²⁾; Sri Lanka 154.0 ³⁾; and Cambodia

63.4; respectively. Among these five countries, although the sex ratio in Nepal seems average, it is not always fair in respect to gender equality. ¹⁾

2) *The data sources are the 2010 Population Census for Indonesia.*

3) *Formal establishments with 24 or fewer persons engaged are not included for Sri Lanka.*

The highest district in terms of the sex ratio (male/female*100) of persons engaged was Bara with 301.9, followed by Rautahat (300.5), Parsa (281.5), Kapilbastu (268.5), and Mahottari (264.4). These five districts are located in the south side of the country where is in plain areas. The higher ratios may be due to the fact that large proportion of female are involved in agricultural occupation in these districts.

Meanwhile, the lowest district was Mugu with 90.2, followed by Gulmi (97.2), Baglung (102.6), Myagdi (103.0), and Sindhupalchok (103.9). These five districts are located in mountain and hill areas.

5-2. Number of persons engaged per establishment is 3.7 persons in Nepal. (Refer to Table 5 and Map 5-2.)

Nepal has 3,408,746 persons engaged and the number of persons engaged per establishment is 3.7 persons. As compared with other countries, Japan has 57.4 millions and 9.9; Indonesia 70.3 millions and 2.6; Sri Lanka 2.8 millions and 2.8; and Cambodia 1.7 millions and 3.3; respectively. Among these five countries, Nepal has relatively more persons engaged per establishment. This is probably due to fewer street businesses in Nepal. ¹⁾

The districts with higher in terms of the number of persons engaged per establishment was Lalitpur with 5.2, followed by Manang (4.9), Kathmandu (4.6), Lamjung (4.6), and Sarlahi (4.6).

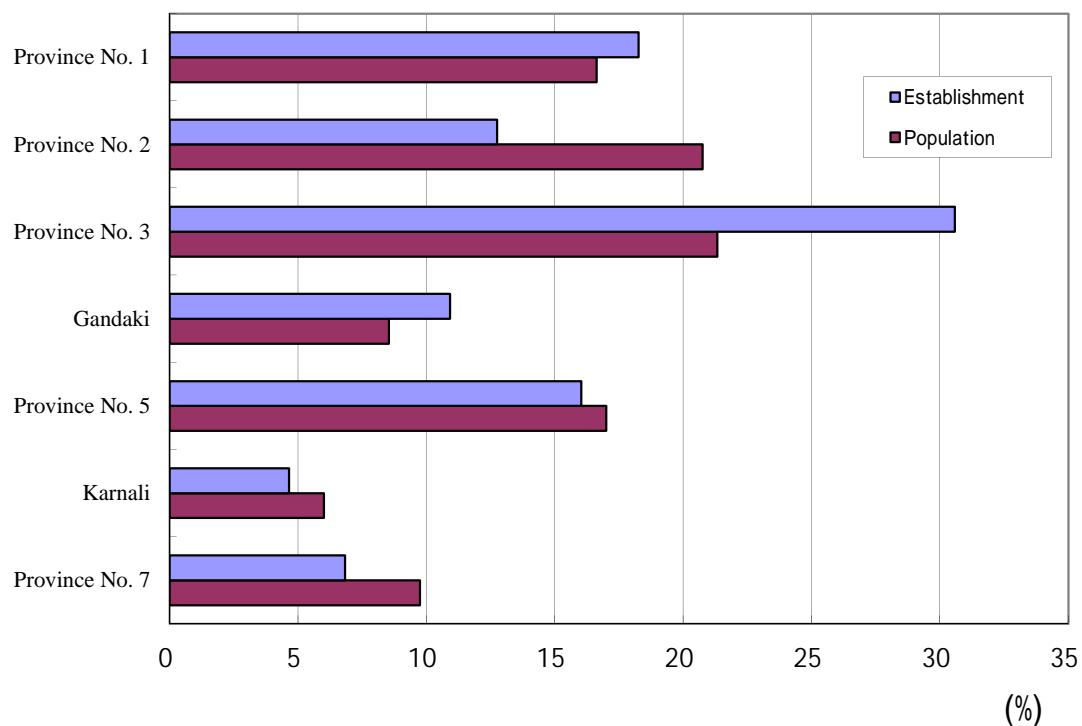
Meanwhile, the least district was Arghakhanchi with 2.3, followed by Dailekh (2.3), Udayapur (2.5), Panchthar (2.5), and Doti (2.6). These five districts are located in hill areas.

SECTION II:

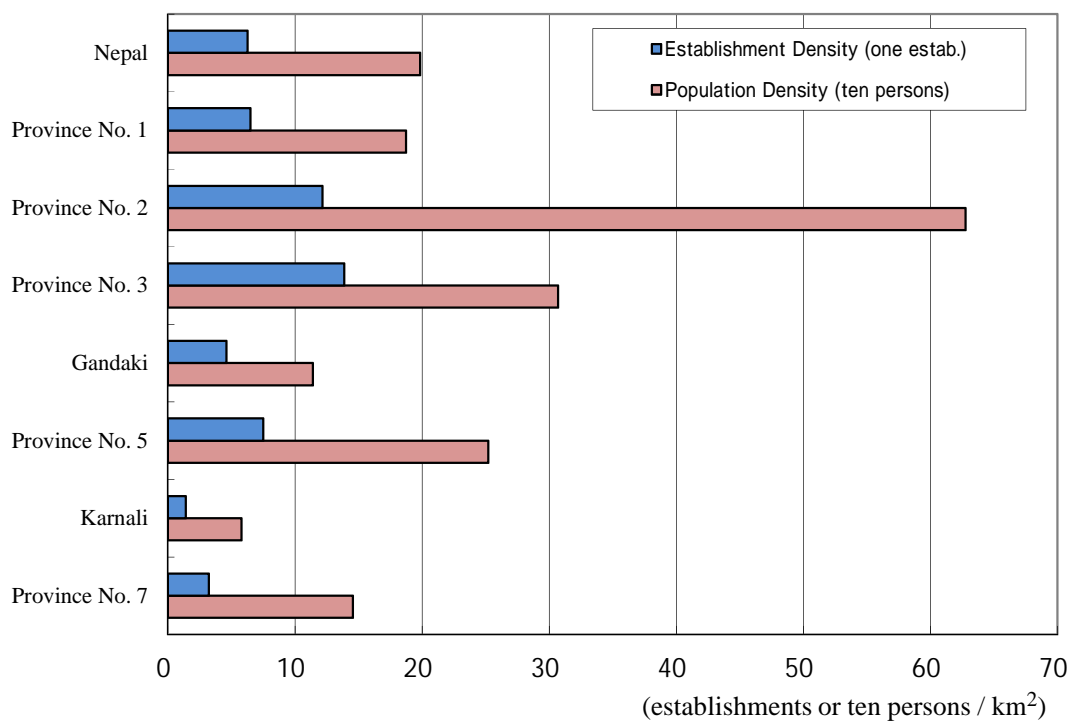
Graphs

- * The preliminary results are sorted out based on the new administrative areas as of 14 April 2018.
- ** The preliminary results were aggregated from the enumerator's control forms (summary sheets) which were filled in by enumerators and checked by supervisors. Therefore, the preliminary results might slightly be different from the final results which are based on Form B.

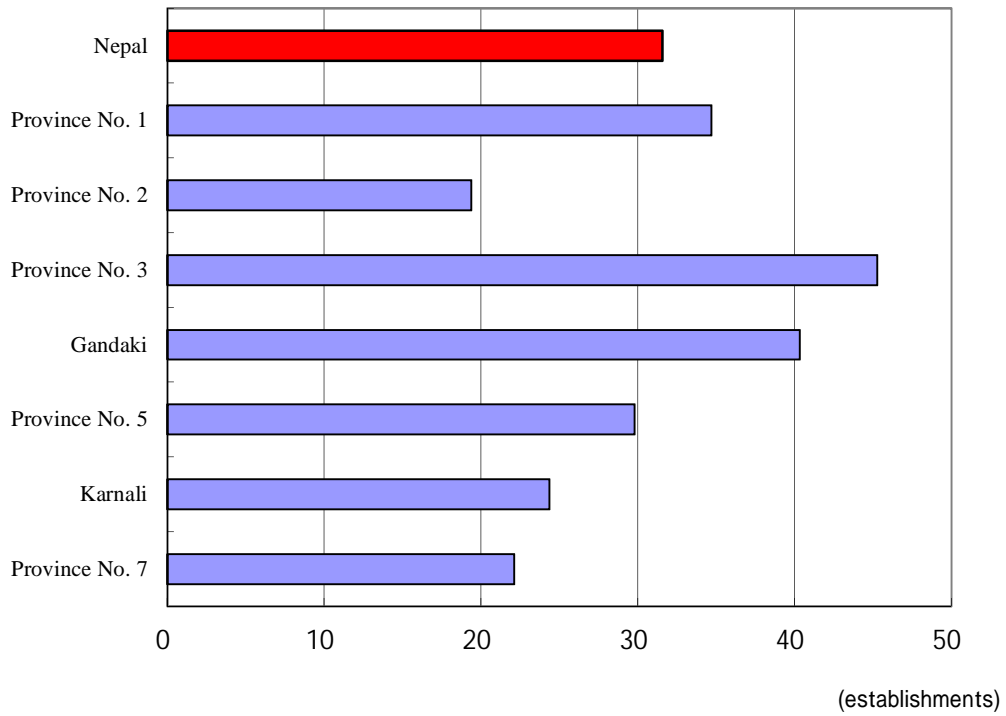
Graph 1. Percent to Total Number of Establishments of Nepal by Province in 2018 and Percent to Total Population of Nepal by Province in 2018 (Provisional)



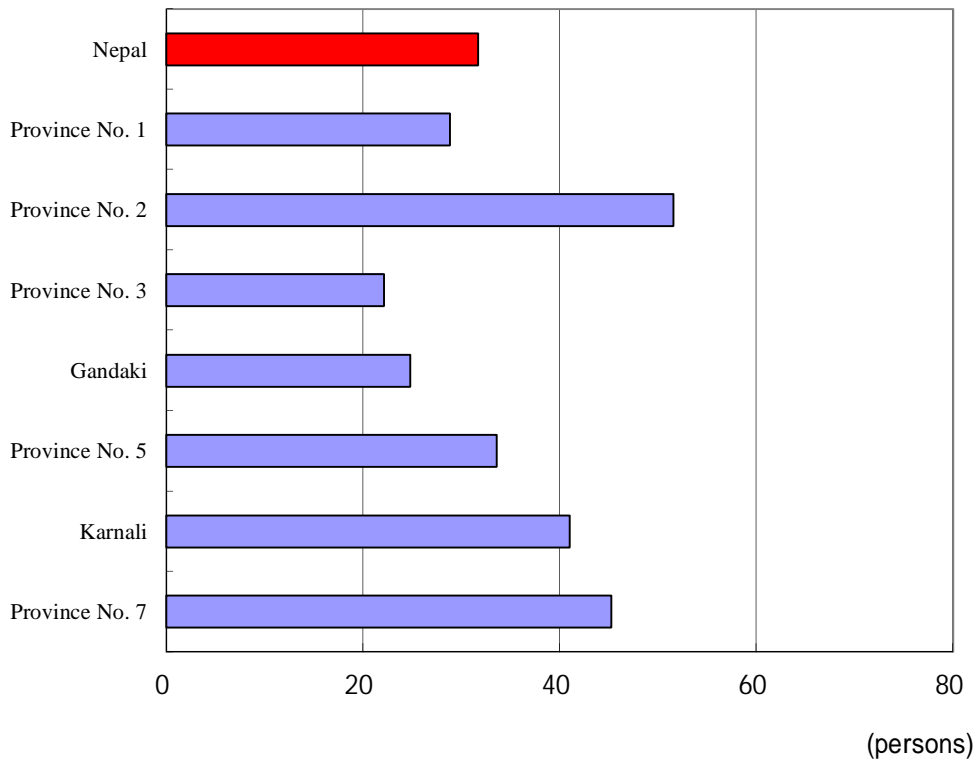
Graph 2. Establishment Density in 2018 and Population Density in 2018 by Province (Provisional)



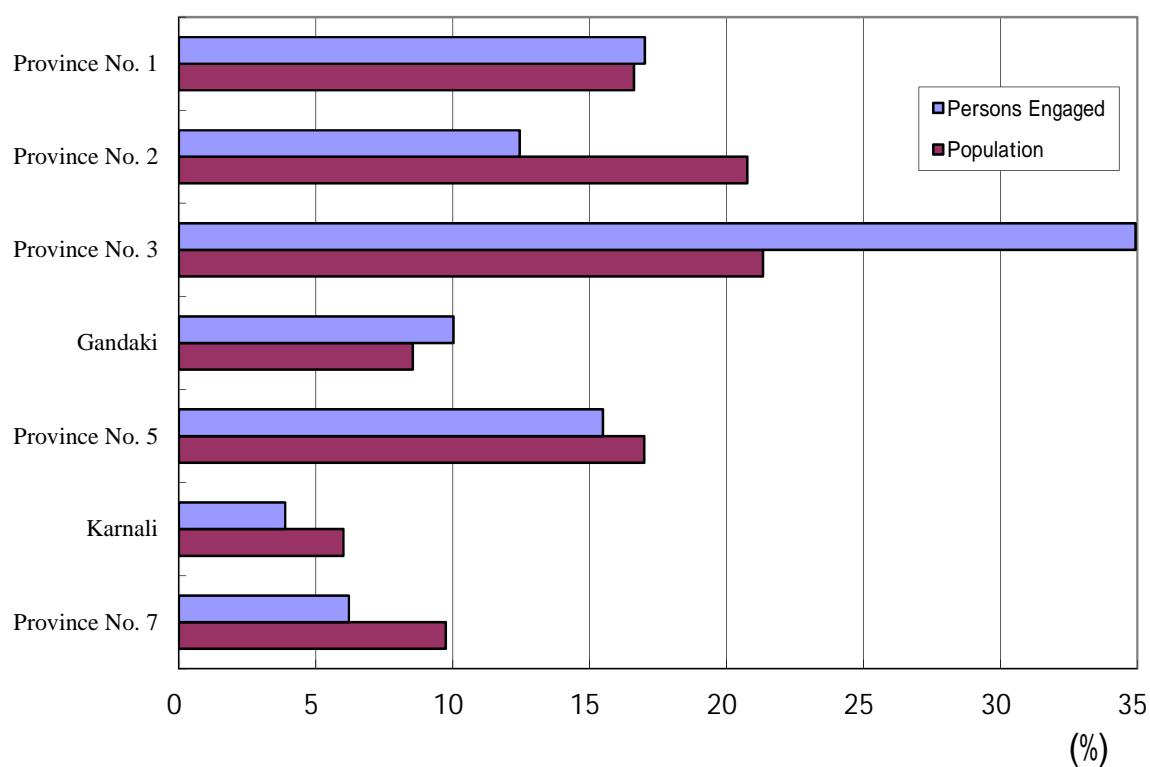
Graph 3-1. Provisional Number of Establishments per 1,000 Persons by Province in 2018



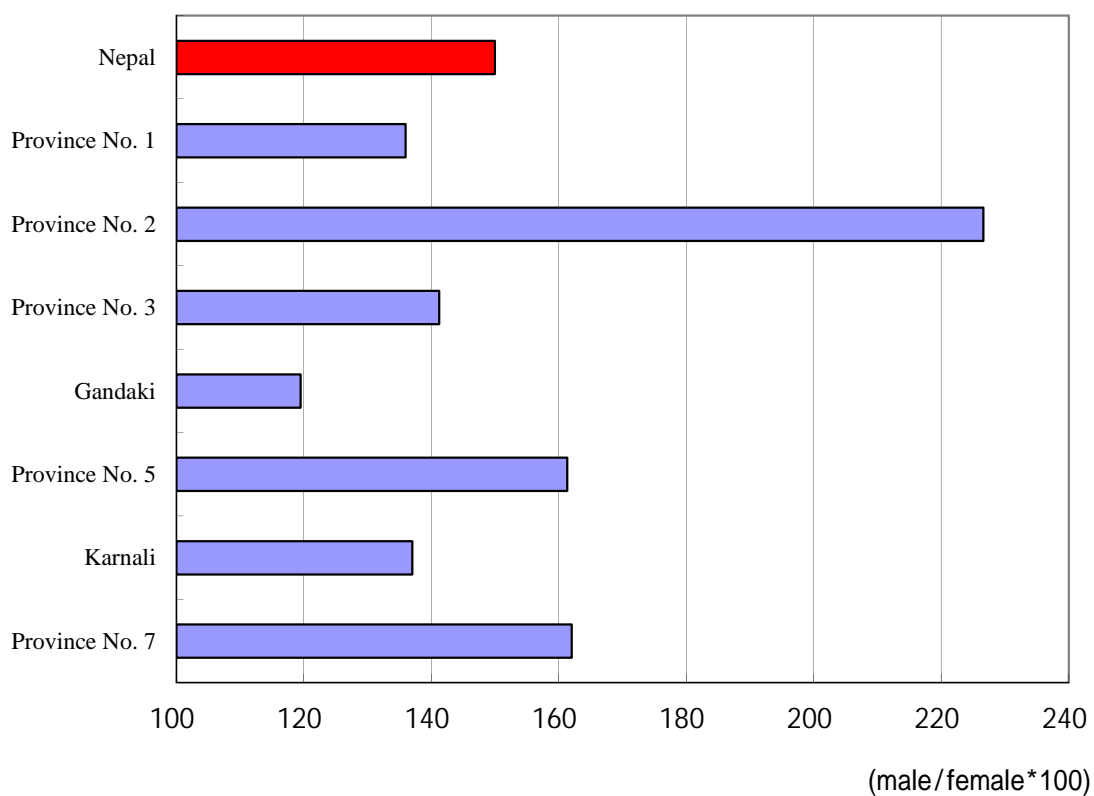
Graph 3-2. Provisional Population per Establishment by Province in 2018



Graph 4. Percent to Total Number of Persons Engaged of Nepal by Province in 2018 and Percent to Total Population of Nepal by Province in 2018 (Provisional)



Graph 5. Sex Ratio of Persons Engaged by Province in 2018 (Provisional)

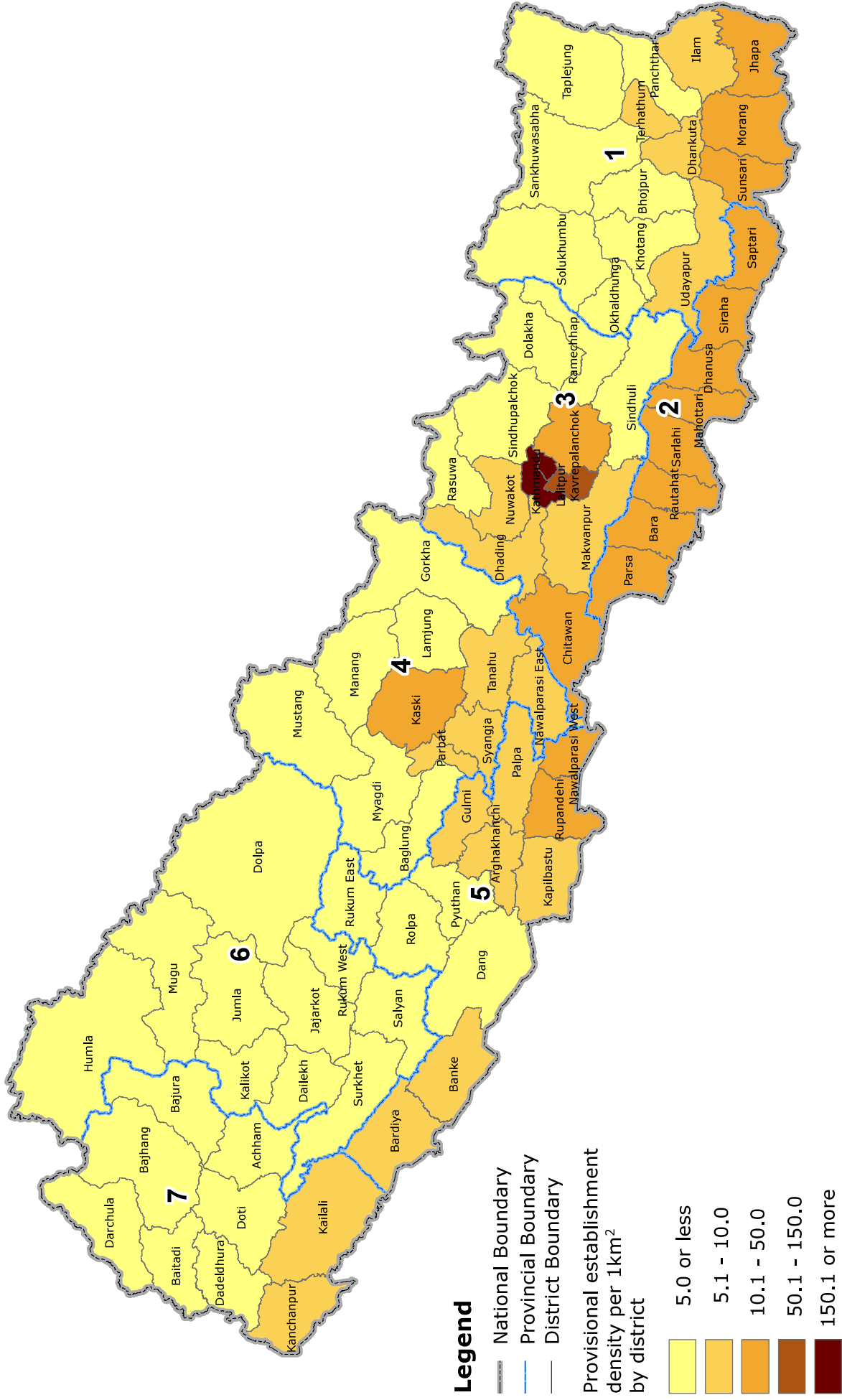


SECTION III:

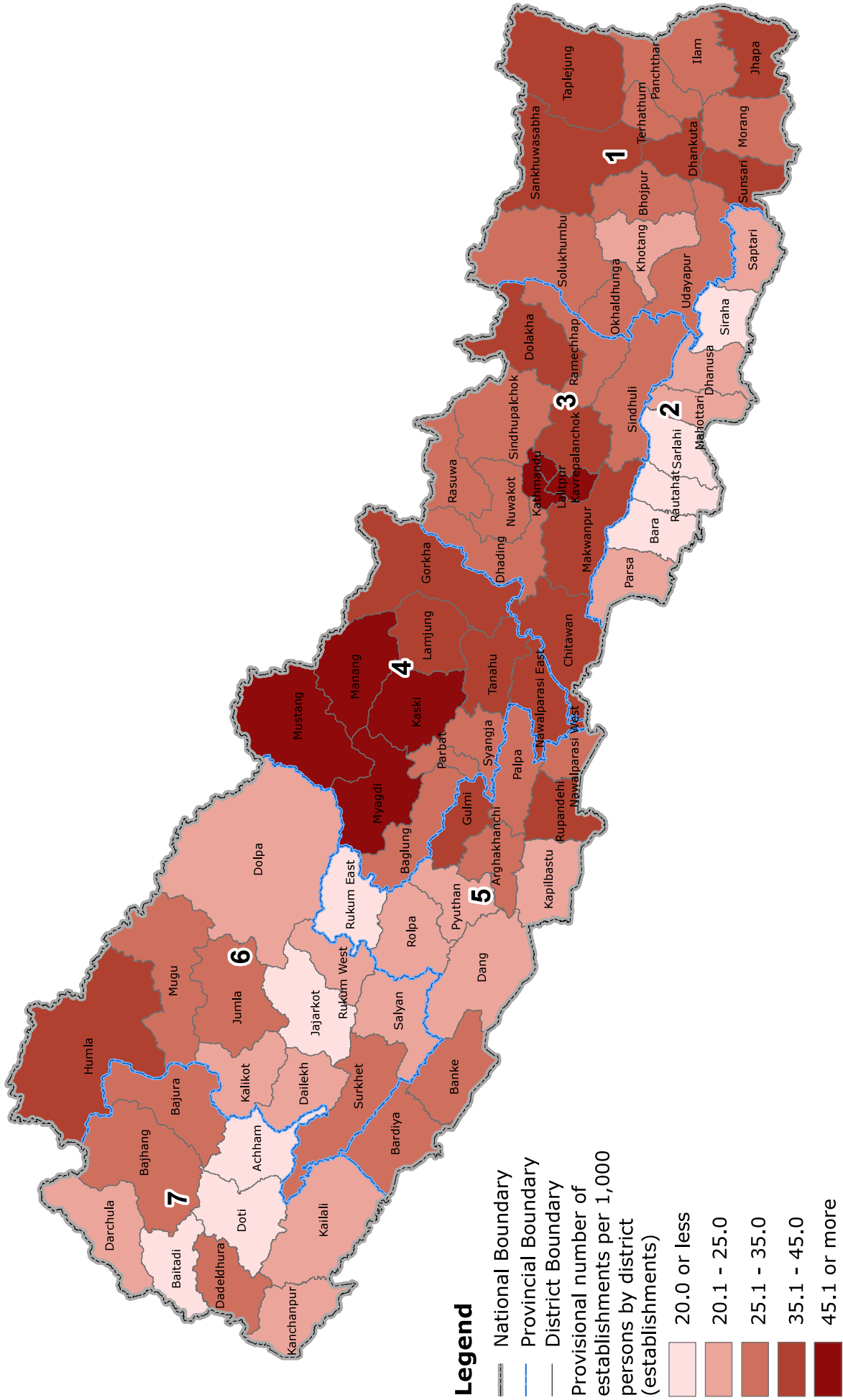
Maps

- * The preliminary results are sorted out based on the new administrative areas as of 14 April 2018.
- ** The preliminary results were aggregated from the enumerator's control forms (summary sheets) which were filled in by enumerators and checked by supervisors. Therefore, the preliminary results might slightly be different from the final results which are based on Form B.

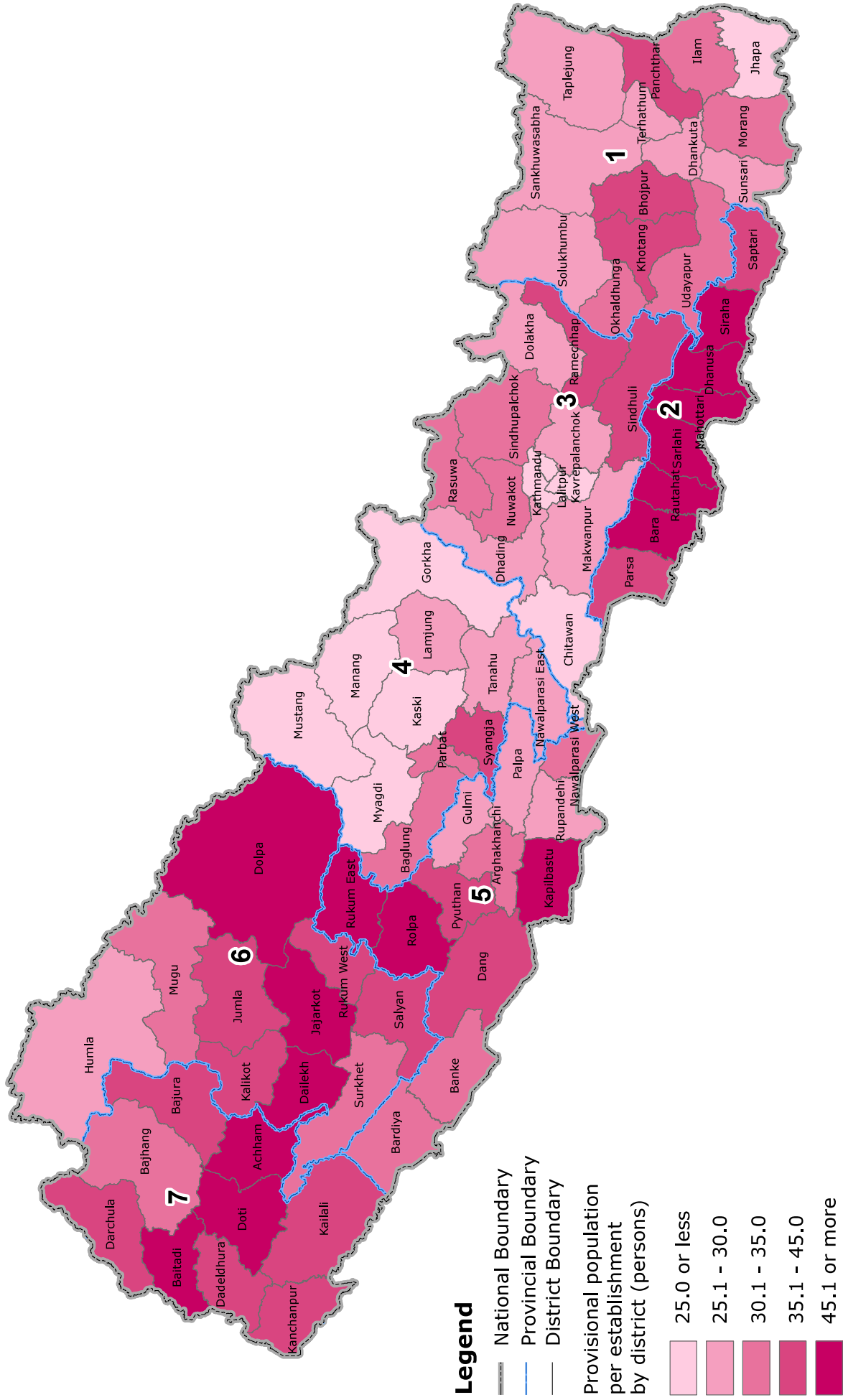
Map 2. Provisional Establishment Density by District in 2018



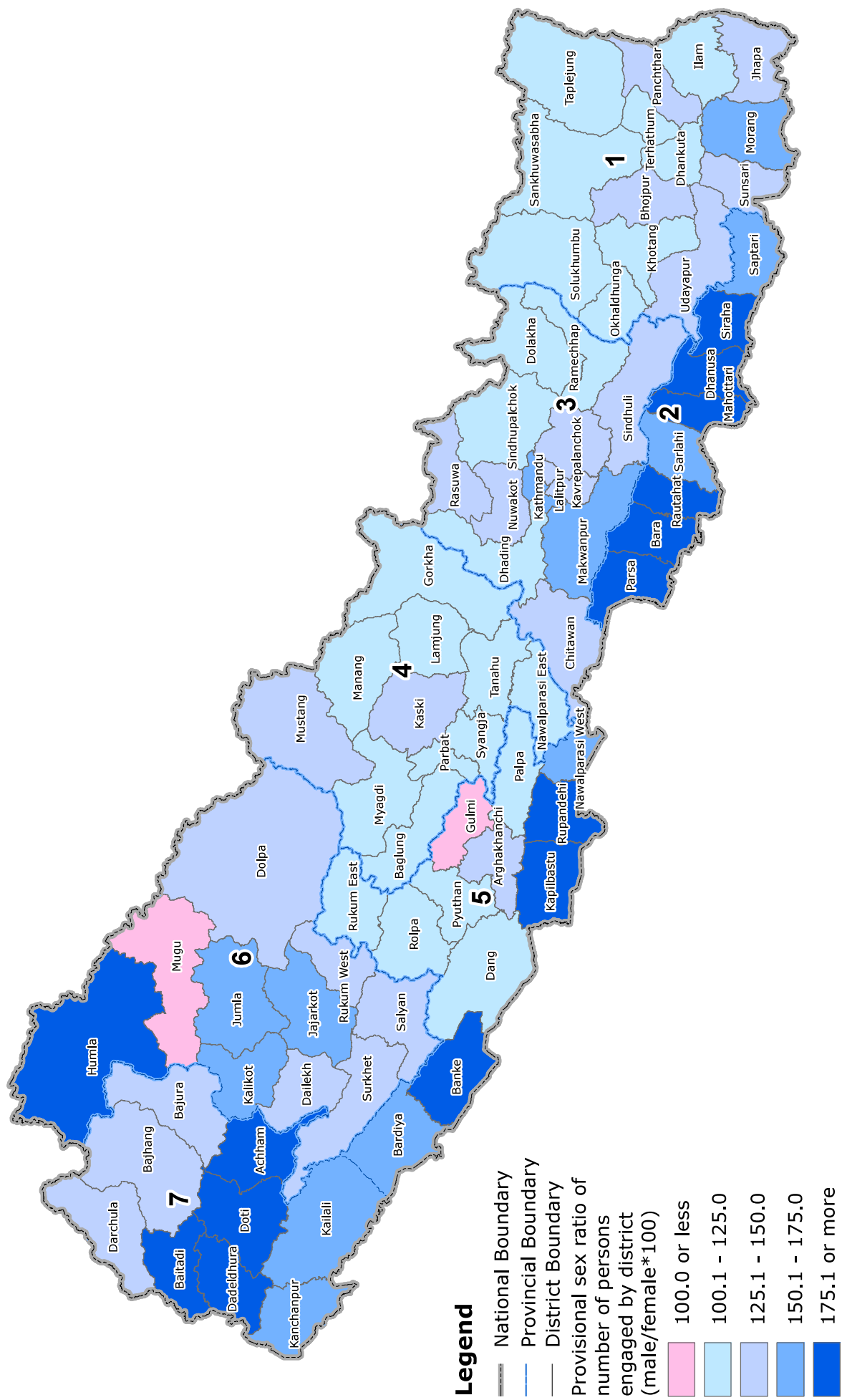
Map 3-1. Provisional Number of Establishments per 1,000 Persons by District in 2018



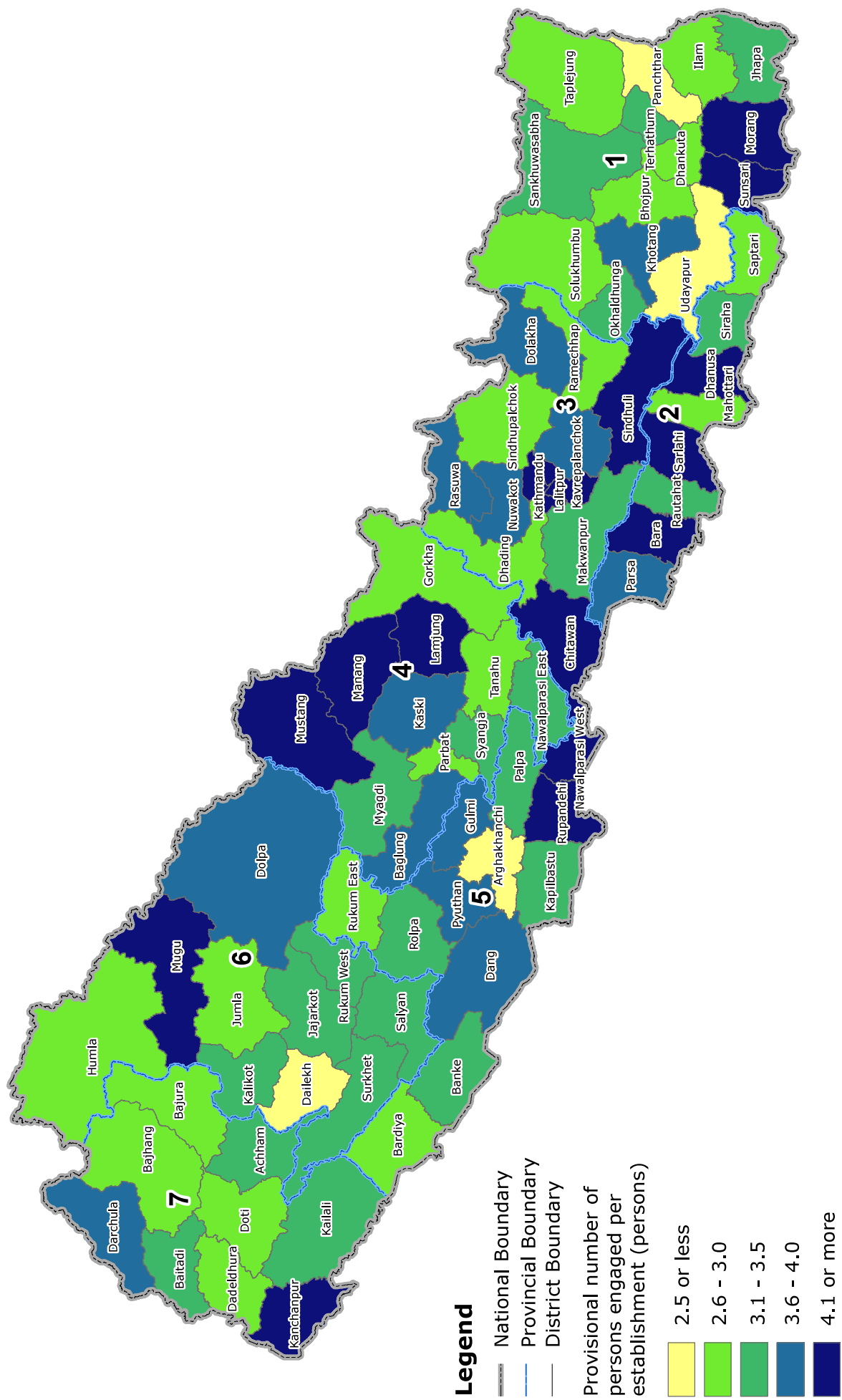
Map 3-2. Provisional Population per Establishment by District in 2018



Map 5-1. Provisional Sex Ratio of Number of Persons Engaged by District in 2018



Map 5-2. Provisional Number of Persons Engaged per Establishment by District in 2018



SECTION IV:

Tables

* The preliminary results are sorted out based on the new administrative areas as of 14 April 2018.

** The preliminary results were aggregated from the enumerator's control forms (summary sheets) which were filled in by enumerators and checked by supervisors. Therefore, the preliminary results might slightly be different from the final results which are based on Form B.

Table 1. Provisional Number of Establishments, Percent to Total, and Rank by District in 2018

Province Code		District Code	District Name	Provisional Number of Establishments in 2018 (establishments)	Percent to Total Number of Nepal (%)	Rank	Percent to Total Projected Population of Nepal in 2018 1) (%)	Rank
			Nepal	922,445	100.0		100.0	
			Province No. 1	168,434	18.3	2	16.6	4
			Province No. 2	117,588	12.7	4	20.8	2
			Province No. 3	282,056	30.6	1	21.3	1
			Gandaki	100,688	10.9	5	8.5	6
			Province No. 5	147,892	16.0	3	17.0	3
			Karnali	42,817	4.6	7	6.0	7
			Province No. 7	62,970	6.8	6	9.7	5
1	01		Taplejung	4,653	0.5	55	0.4	66
1	02		Sankhuwasabha	6,037	0.7	47	0.5	59
1	03		Solukhumbu	3,506	0.4	66	0.4	69
1	04		Okhaldhunga	4,350	0.5	57	0.5	62
1	05		Khotang	4,307	0.5	58	0.6	54
1	06		Bhojpur	4,074	0.4	60	0.6	58
1	07		Dhankuta	6,009	0.7	48	0.6	56
1	08		Terhathum	3,410	0.4	68	0.3	70
1	09		Panchthar	5,441	0.6	51	0.7	51
1	10		Ilam	9,667	1.0	33	1.1	33
1	11		Jhapa	38,741	4.2	2	3.1	5
1	12		Morang	35,237	3.8	4	3.6	2
1	13		Sunsari	31,486	3.4	5	3.0	6
1	14		Udayapur	11,516	1.2	29	1.2	29
2	01		Saptari	16,292	1.8	13	2.4	11
2	02		Siraha	13,163	1.4	22	2.4	13
2	03		Dhanusa	17,751	1.9	12	2.8	8
2	04		Mahottari	14,090	1.5	20	2.4	12
2	05		Sarlahi	15,324	1.7	16	3.0	7
2	06		Rautahat	12,796	1.4	23	2.8	9
2	07		Bara	12,455	1.4	25	2.7	10
2	08		Parsa	15,717	1.7	15	2.4	14
3	01		Dolakha	6,766	0.7	41	0.6	53
3	02		Sindhupalchok	9,105	1.0	35	1.0	34
3	03		Rasuwa	1,375	0.1	73	0.2	74
3	04		Dhading	12,052	1.3	27	1.2	28
3	05		Nuwakot	8,868	1.0	36	1.0	36
3	06		Kathmandu	123,994	13.4	1	7.3	1
3	07		Bhaktapur	19,629	2.1	10	1.2	27
3	08		Lalitpur	27,009	2.9	8	1.9	20
3	09		Kavrepalanchok	14,303	1.6	19	1.4	25
3	10		Ramechhap	5,609	0.6	50	0.7	49
3	11		Sindhuli	8,000	0.9	39	1.1	32
3	12		Makwanpur	16,078	1.7	14	1.6	23
3	13		Chitawan	29,268	3.2	7	2.3	15

Table 1. Provisional Number of Establishments, Percent to Total, and Rank by District in 2018

Province Code	District Code		Provisional Number of Establishments in 2018 (establishments)	Percent to Total Number of Nepal (%)	Rank	Percent to Total Projected Population of Nepal in 2018 1) (%)	Rank
	District Name						
4	01	Gorkha	10,980	1.2	32	0.9	43
4	02	Manang	487	0.1	77	0.0	77
4	03	Mustang	775	0.1	76	0.0	76
4	04	Myagdi	5,065	0.5	53	0.4	68
4	05	Kaski	30,746	3.3	6	1.9	19
4	06	Lamjung	6,415	0.7	43	0.6	55
4	07	Tanahu	12,442	1.3	26	1.2	31
4	08	Nawalparasi East	12,782	1.4	24	1.2	30
4	09	Syangja	7,412	0.8	40	0.9	42
4	10	Parbat	4,735	0.5	54	0.5	64
4	11	Baglung	8,849	1.0	37	1.0	38
5	01	Rukum East	1,020	0.1	74	0.2	72
5	02	Rolpa	5,096	0.6	52	0.8	46
5	03	Pyuthan	5,632	0.6	49	0.8	45
5	04	Gulmi	9,547	1.0	34	0.9	41
5	05	Arghakhanchi	6,619	0.7	42	0.7	50
5	06	Palpa	8,701	0.9	38	0.9	44
5	07	Nawalparasi West	11,226	1.2	31	1.3	26
5	08	Rupandehi	38,415	4.2	3	3.5	3
5	09	Kapilbastu	13,607	1.5	21	2.2	16
5	10	Dang	14,415	1.6	18	2.1	17
5	11	Banke	18,698	2.0	11	2.0	18
5	12	Bardiya	14,916	1.6	17	1.6	22
6	01	Dolpa	861	0.1	75	0.1	75
6	02	Mugu	1,783	0.2	72	0.2	71
6	03	Humla	2,015	0.2	71	0.2	73
6	04	Jumla	3,078	0.3	70	0.4	67
6	05	Kalikot	3,535	0.4	65	0.5	61
6	06	Dailekh	6,314	0.7	44	1.0	35
6	07	Jajarkot	3,308	0.4	69	0.7	52
6	08	Rukum West	4,001	0.4	62	0.6	57
6	09	Salyan	6,098	0.7	46	0.9	39
6	10	Surkhet	11,824	1.3	28	1.4	24
7	01	Bajura	3,901	0.4	63	0.5	63
7	02	Bajhang	6,215	0.7	45	0.7	47
7	03	Darchula	3,417	0.4	67	0.5	65
7	04	Baitadi	4,408	0.5	56	0.9	40
7	05	Dadeldhura	4,058	0.4	61	0.5	60
7	06	Doti	3,667	0.4	64	0.7	48
7	07	Achham	4,282	0.5	59	1.0	37
7	08	Kailali	21,528	2.3	9	3.1	4
7	09	Kanchanpur	11,494	1.2	30	1.8	21

1) The population of Nepal in 2018 is 29,218,867 projected by CBS.

Four new districts are Nawalparasi East, Nawalparasi West, Rukum East, and Rukum West.

Table 2. Provisional Establishment Density and Rank by District in 2018

Province Code			Provisional Number of Establishments in 2018 (establishments)	Area in 2011 1) (Km ²)	Provisional Establishment Density in 2018 (estab./Km ²)	Rank	Projected Population Density in 2018 2) (persons/Km ²)	Rank
District Code		District Name						
			Nepal	922,445	147,181	6.3		199
		Province No. 1	168,434	25,905	6.5	4	187	4
		Province No. 2	117,588	9,661	12.2	2	628	1
		Province No. 3	282,056	20,300	13.9	1	307	2
		Gandaki	100,688	21,855	4.6	5	114	6
		Province No. 5	147,892	19,704	7.5	3	252	3
		Karnali	42,817	30,217	1.4	7	58	7
		Province No. 7	62,970	19,539	3.2	6	146	5
1	01	Taplejung	4,653	3,646	1.3	68	36	69
1	02	Sankhuwasabha	6,037	3,480	1.7	65	45	68
1	03	Solukhumbu	3,506	3,312	1.1	70	31	71
1	04	Okhaldhunga	4,350	1,074	4.1	46	141	48
1	05	Khotang	4,307	1,591	2.7	56	114	54
1	06	Bhojpur	4,074	1,507	2.7	57	108	55
1	07	Dhankuta	6,009	891	6.7	29	191	33
1	08	Terhathum	3,410	679	5.0	38	149	47
1	09	Panchthar	5,441	1,241	4.4	42	158	45
1	10	Ilam	9,667	1,703	5.7	35	181	39
1	11	Jhapa	38,741	1,606	24.1	6	561	13
1	12	Morang	35,237	1,855	19.0	7	575	12
1	13	Sunsari	31,486	1,257	25.0	5	700	6
1	14	Udayapur	11,516	2,063	5.6	36	169	42
2	01	Saptari	16,292	1,363	12.0	14	511	14
2	02	Siraha	13,163	1,188	11.1	17	581	11
2	03	Dhanusa	17,751	1,180	15.0	10	698	7
2	04	Mahottari	14,090	1,002	14.1	11	691	8
2	05	Sarlahi	15,324	1,259	12.2	13	689	9
2	06	Rautahat	12,796	1,126	11.4	16	718	5
2	07	Bara	12,455	1,190	10.5	18	670	10
2	08	Parsa	15,717	1,353	11.6	15	510	15
3	01	Dolakha	6,766	2,191	3.1	52	86	61
3	02	Sindhupalchok	9,105	2,542	3.6	49	116	53
3	03	Rasuwa	1,375	1,544	0.9	71	29	72
3	04	Dhading	12,052	1,926	6.3	34	182	37
3	05	Nuwakot	8,868	1,121	7.9	25	255	24
3	06	Kathmandu	123,994	395	313.9	1	5,380	1
3	07	Bhaktapur	19,629	119	164.9	2	2,983	2
3	08	Lalitpur	27,009	385	70.2	3	1,427	3
3	09	Kavrepalanchok	14,303	1,396	10.2	19	286	21
3	10	Ramechhap	5,609	1,546	3.6	48	134	50
3	11	Sindhuli	8,000	2,491	3.2	51	124	52
3	12	Makwanpur	16,078	2,426	6.6	31	187	34
3	13	Chitawan	29,268	2,218	13.2	12	303	19

Table 2. Provisional Establishment Density and Rank by District in 2018

Province Code	District Code		Provisional Number of Establishments in 2018 (establishments)	Area in 2011 1) (Km ²)	Provisional Establishment Density in 2018 (estab./Km ²)	Rank	Projected Population Density in 2018 2) (persons/Km ²)	Rank
	District Name							
4	01	Gorkha	10,980	3,610	3.0	53	70	62
4	02	Manang	487	2,246	0.2	76	3	77
4	03	Mustang	775	3,573	0.2	75	3	76
4	04	Myagdi	5,065	2,297	2.2	60	49	66
4	05	Kaski	30,746	2,017	15.2	9	280	23
4	06	Lamjung	6,415	1,692	3.8	47	101	57
4	07	Tanahu	12,442	1,546	8.0	23	221	30
4	08	Nawalparasi East	12,782	1,432	8.9	21	240	26
4	09	Syangja	7,412	1,164	6.4	32	224	29
4	10	Parbat	4,735	494	9.6	20	300	20
4	11	Baglung	8,849	1,784	5.0	39	157	46
5	01	Rukum East	1,020	1,656	0.6	72	35	70
5	02	Rolpa	5,096	1,879	2.7	55	125	51
5	03	Pyuthan	5,632	1,309	4.3	43	183	36
5	04	Gulmi	9,547	1,149	8.3	22	228	28
5	05	Arghakhanchi	6,619	1,193	5.5	37	169	41
5	06	Palpa	8,701	1,373	6.3	33	184	35
5	07	Nawalparasi West	11,226	730	15.4	8	502	16
5	08	Rupandehi	38,415	1,360	28.2	4	754	4
5	09	Kapilbastu	13,607	1,738	7.8	26	373	17
5	10	Dang	14,415	2,955	4.9	40	212	31
5	11	Banke	18,698	2,337	8.0	24	249	25
5	12	Bardiya	14,916	2,025	7.4	27	231	27
6	01	Dolpa	861	7,889	0.1	77	5	75
6	02	Mugu	1,783	3,535	0.5	73	18	73
6	03	Humla	2,015	5,655	0.4	74	10	74
6	04	Jumla	3,078	2,531	1.2	69	48	67
6	05	Kalikot	3,535	1,741	2.0	61	89	59
6	06	Dailekh	6,314	1,502	4.2	44	193	32
6	07	Jajarkot	3,308	2,230	1.5	66	86	60
6	08	Rukum West	4,001	1,221	3.3	50	137	49
6	09	Salyan	6,098	1,462	4.2	45	182	38
6	10	Surkhet	11,824	2,451	4.8	41	165	44
7	01	Bajura	3,901	2,188	1.8	64	69	63
7	02	Bajhang	6,215	3,422	1.8	62	63	64
7	03	Darchula	3,417	2,322	1.5	67	61	65
7	04	Baitadi	4,408	1,519	2.9	54	173	40
7	05	Dadeldhura	4,058	1,538	2.6	58	101	58
7	06	Doti	3,667	2,025	1.8	63	106	56
7	07	Achham	4,282	1,680	2.5	59	168	43
7	08	Kailali	21,528	3,235	6.7	30	282	22
7	09	Kanchanpur	11,494	1,610	7.1	28	318	18

1) The area in 2011 is based on National Population and Housing Census 2011 by CBS.

The areas of four new districts are estimated by CBS.

2) The population of Nepal in 2018 is 29,218,867 projected by CBS.

Four new districts are Nawalparasi East, Nawalparasi West, Rukum East, and Rukum West.

Table 3-1. Provisional Number of Establishments per 1,000 Persons by District in 2018

Province Code	District Code		Provisional Number of Establishments in 2018 (establishments)	Provisional Number of Establishments per 1,000 Persons in 2018 1) (establishments)	Rank	Provisional Establishment Density in 2018 2) (estab./Km ²)	Rank
	District Name						
		Nepal	922,445	31.6		6.3	
		Province No. 1	168,434	34.7	3	6.5	4
		Province No. 2	117,588	19.4	7	12.2	2
		Province No. 3	282,056	45.3	1	13.9	1
		Gandaki	100,688	40.3	2	4.6	5
		Province No. 5	147,892	29.8	4	7.5	3
		Karnali	42,817	24.4	5	1.4	7
		Province No. 7	62,970	22.1	6	3.2	6
1	01	Taplejung	4,653	35.7	20	1.3	68
1	02	Sankhuwasabha	6,037	38.5	11	1.7	65
1	03	Solukhumbu	3,506	33.9	26	1.1	70
1	04	Okhaldhunga	4,350	28.8	41	4.1	46
1	05	Khotang	4,307	23.7	54	2.7	56
1	06	Bhojpur	4,074	25.1	51	2.7	57
1	07	Dhankuta	6,009	35.4	22	6.7	29
1	08	Terhathum	3,410	33.7	27	5.0	38
1	09	Panchthar	5,441	27.7	45	4.4	42
1	10	Ilam	9,667	31.4	35	5.7	35
1	11	Jhapa	38,741	43.0	10	24.1	6
1	12	Morang	35,237	33.1	29	19.0	7
1	13	Sunsari	31,486	35.8	19	25.0	5
1	14	Udayapur	11,516	33.1	28	5.6	36
2	01	Saptari	16,292	23.4	57	12.0	14
2	02	Siraha	13,163	19.1	69	11.1	17
2	03	Dhanusa	17,751	21.6	65	15.0	10
2	04	Mahottari	14,090	20.4	68	14.1	11
2	05	Sarlahi	15,324	17.7	71	12.2	13
2	06	Rautahat	12,796	15.8	75	11.4	16
2	07	Bara	12,455	15.6	76	10.5	18
2	08	Parsa	15,717	22.8	61	11.6	15
3	01	Dolakha	6,766	36.1	17	3.1	52
3	02	Sindhupalchok	9,105	31.0	37	3.6	49
3	03	Rasuwa	1,375	30.7	38	0.9	71
3	04	Dhading	12,052	34.3	25	6.3	34
3	05	Nuwakot	8,868	31.0	36	7.9	25
3	06	Kathmandu	123,994	58.3	3	313.9	1
3	07	Bhaktapur	19,629	55.3	4	164.9	2
3	08	Lalitpur	27,009	49.2	6	70.2	3
3	09	Kavrepalanchok	14,303	35.9	18	10.2	19
3	10	Ramechhap	5,609	27.0	46	3.6	48
3	11	Sindhuli	8,000	25.9	48	3.2	51
3	12	Makwanpur	16,078	35.5	21	6.6	31
3	13	Chitawan	29,268	43.6	8	13.2	12

Table 3-1. Provisional Number of Establishments per 1,000 Persons by District in 2018

Province Code	District Code		Provisional Number of Establishments in 2018 (establishments)	Provisional Number of Establishments per 1,000 Persons in 2018 1) (establishments)	Rank	Provisional Establishment Density in 2018 2) (estab./Km ²)	Rank
	District Name						
4	01	Gorkha	10,980	43.4	9	3.0	53
4	02	Manang	487	76.2	1	0.2	76
4	03	Mustang	775	64.7	2	0.2	75
4	04	Myagdi	5,065	45.3	7	2.2	60
4	05	Kaski	30,746	54.4	5	15.2	9
4	06	Lamjung	6,415	37.4	13	3.8	47
4	07	Tanahu	12,442	36.4	15	8.0	23
4	08	Nawalparasi East	12,782	37.2	14	8.9	21
4	09	Syangja	7,412	28.4	44	6.4	32
4	10	Parbat	4,735	31.9	32	9.6	20
4	11	Baglung	8,849	31.5	34	5.0	39
5	01	Rukum East	1,020	17.8	70	0.6	72
5	02	Rolpa	5,096	21.7	64	2.7	55
5	03	Pyuthan	5,632	23.5	56	4.3	43
5	04	Gulmi	9,547	36.4	16	8.3	22
5	05	Arghakhanchi	6,619	32.8	30	5.5	37
5	06	Palpa	8,701	34.5	24	6.3	33
5	07	Nawalparasi West	11,226	30.7	39	15.4	8
5	08	Rupandehi	38,415	37.4	12	28.2	4
5	09	Kapilbastu	13,607	21.0	66	7.8	26
5	10	Dang	14,415	23.0	58	4.9	40
5	11	Banke	18,698	32.2	31	8.0	24
5	12	Bardiya	14,916	31.8	33	7.4	27
6	01	Dolpa	861	20.9	67	0.1	77
6	02	Mugu	1,783	28.7	43	0.5	73
6	03	Humla	2,015	35.3	23	0.4	74
6	04	Jumla	3,078	25.3	50	1.2	69
6	05	Kalikot	3,535	22.9	60	2.0	61
6	06	Dailekh	6,314	21.8	63	4.2	44
6	07	Jajarkot	3,308	17.2	72	1.5	66
6	08	Rukum West	4,001	23.9	53	3.3	50
6	09	Salyan	6,098	22.9	59	4.2	45
6	10	Surkhet	11,824	29.3	40	4.8	41
7	01	Bajura	3,901	25.8	49	1.8	64
7	02	Bajhang	6,215	28.7	42	1.8	62
7	03	Darchula	3,417	24.0	52	1.5	67
7	04	Baitadi	4,408	16.7	74	2.9	54
7	05	Dadeldhura	4,058	26.2	47	2.6	58
7	06	Doti	3,667	17.2	73	1.8	63
7	07	Achham	4,282	15.2	77	2.5	59
7	08	Kailali	21,528	23.6	55	6.7	30
7	09	Kanchanpur	11,494	22.4	62	7.1	28

1) The population of Nepal in 2018 is 29,218,867 projected by CBS.

Four new districts are Nawalparasi East, Nawalparasi West, Rukum East, and Rukum West.

2) The area in 2011 is based on National Population and Housing Census 2011 by CBS.

The areas of four new districts are estimated by CBS.

Table 3-2. Provisional Population per Establishment by District in 2018

Province Code	District Code		Provisional Number of Establishments in 2018 (establishments)	Provisional Population per Establishment in 2018 1) (persons)	Rank	Provisional Establishment Density in 2018 2) (estab./Km ²)	Rank
	District Name						
		Nepal	922,445	31.7		6.3	
		Province No. 1	168,434	28.8	5	6.5	4
		Province No. 2	117,588	51.6	1	12.2	2
		Province No. 3	282,056	22.1	7	13.9	1
		Gandaki	100,688	24.8	6	4.6	5
		Province No. 5	147,892	33.6	4	7.5	3
		Karnali	42,817	41.0	3	1.4	7
		Province No. 7	62,970	45.2	2	3.2	6
1	01	Taplejung	4,653	28.0	58	1.3	68
1	02	Sankhuwasabha	6,037	26.0	67	1.7	65
1	03	Solukhumbu	3,506	29.5	52	1.1	70
1	04	Okhaldhunga	4,350	34.7	37	4.1	46
1	05	Khotang	4,307	42.2	24	2.7	56
1	06	Bhojpur	4,074	39.8	27	2.7	57
1	07	Dhankuta	6,009	28.3	56	6.7	29
1	08	Terhathum	3,410	29.7	51	5.0	38
1	09	Panchthar	5,441	36.1	33	4.4	42
1	10	Ilam	9,667	31.8	43	5.7	35
1	11	Jhapa	38,741	23.3	68	24.1	6
1	12	Morang	35,237	30.3	49	19.0	7
1	13	Sunsari	31,486	27.9	59	25.0	5
1	14	Udayapur	11,516	30.2	50	5.6	36
2	01	Saptari	16,292	42.7	21	12.0	14
2	02	Siraha	13,163	52.4	9	11.1	17
2	03	Dhanusa	17,751	46.4	13	15.0	10
2	04	Mahottari	14,090	49.1	10	14.1	11
2	05	Sarlahi	15,324	56.6	7	12.2	13
2	06	Rautahat	12,796	63.2	3	11.4	16
2	07	Bara	12,455	64.0	2	10.5	18
2	08	Parsa	15,717	43.9	17	11.6	15
3	01	Dolakha	6,766	27.7	61	3.1	52
3	02	Sindhupalchok	9,105	32.3	41	3.6	49
3	03	Rasuwa	1,375	32.6	40	0.9	71
3	04	Dhading	12,052	29.1	53	6.3	34
3	05	Nuwakot	8,868	32.2	42	7.9	25
3	06	Kathmandu	123,994	17.1	75	313.9	1
3	07	Bhaktapur	19,629	18.1	74	164.9	2
3	08	Lalitpur	27,009	20.3	72	70.2	3
3	09	Kavrepalanchok	14,303	27.9	60	10.2	19
3	10	Ramechhap	5,609	37.1	32	3.6	48
3	11	Sindhuli	8,000	38.5	30	3.2	51
3	12	Makwanpur	16,078	28.2	57	6.6	31
3	13	Chitawan	29,268	22.9	70	13.2	12

Table 3-2. Provisional Population per Establishment by District in 2018

Province Code	District Code		Provisional Number of Establishments in 2018 (establishments)	Provisional Population per Establishment in 2018 1) (persons)	Rank	Provisional Establishment Density in 2018 2) (estab./Km ²)	Rank
	District Name						
4	01	Gorkha	10,980	23.0	69	3.0	53
4	02	Manang	487	13.1	77	0.2	76
4	03	Mustang	775	15.5	76	0.2	75
4	04	Myagdi	5,065	22.1	71	2.2	60
4	05	Kaski	30,746	18.4	73	15.2	9
4	06	Lamjung	6,415	26.7	65	3.8	47
4	07	Tanahu	12,442	27.5	63	8.0	23
4	08	Nawalparasi East	12,782	26.9	64	8.9	21
4	09	Syangja	7,412	35.2	34	6.4	32
4	10	Parbat	4,735	31.3	46	9.6	20
4	11	Baglung	8,849	31.7	44	5.0	39
5	01	Rukum East	1,020	56.2	8	0.6	72
5	02	Rolpa	5,096	46.2	14	2.7	55
5	03	Pyuthan	5,632	42.6	22	4.3	43
5	04	Gulmi	9,547	27.5	62	8.3	22
5	05	Arghakhanchi	6,619	30.5	48	5.5	37
5	06	Palpa	8,701	29.0	54	6.3	33
5	07	Nawalparasi West	11,226	32.6	39	15.4	8
5	08	Rupandehi	38,415	26.7	66	28.2	4
5	09	Kapilbastu	13,607	47.6	12	7.8	26
5	10	Dang	14,415	43.6	20	4.9	40
5	11	Banke	18,698	31.1	47	8.0	24
5	12	Bardiya	14,916	31.4	45	7.4	27
6	01	Dolpa	861	47.8	11	0.1	77
6	02	Mugu	1,783	34.8	35	0.5	73
6	03	Humla	2,015	28.3	55	0.4	74
6	04	Jumla	3,078	39.5	28	1.2	69
6	05	Kalikot	3,535	43.7	18	2.0	61
6	06	Dailekh	6,314	45.9	15	4.2	44
6	07	Jajarkot	3,308	58.2	6	1.5	66
6	08	Rukum West	4,001	41.8	25	3.3	50
6	09	Salyan	6,098	43.6	19	4.2	45
6	10	Surkhet	11,824	34.1	38	4.8	41
7	01	Bajura	3,901	38.7	29	1.8	64
7	02	Bajhang	6,215	34.8	36	1.8	62
7	03	Darchula	3,417	41.6	26	1.5	67
7	04	Baitadi	4,408	59.8	4	2.9	54
7	05	Dadeldhura	4,058	38.2	31	2.6	58
7	06	Doti	3,667	58.3	5	1.8	63
7	07	Achham	4,282	65.7	1	2.5	59
7	08	Kailali	21,528	42.3	23	6.7	30
7	09	Kanchanpur	11,494	44.6	16	7.1	28

1) The population of Nepal in 2018 is 29,218,867 projected by CBS.

Four new districts are Nawalparasi East, Nawalparasi West, Rukum East, and Rukum West.

2) The area in 2011 is based on National Population and Housing Census 2011 by CBS.

The areas of four new districts are estimated by CBS.

Table 4. Provisional Number of Persons Engaged, Percent to Total, and Rank by District in 2018

Province Code		District Code	District Name	Provisional Number of Persons Engaged in 2018 (establishments)	Percent to Total Number of Nepal (%)	Rank	Percent to Total Projected Population of Nepal in 2018 1) (%)	Rank
			Nepal	3,408,746	100.0		100.0	
			Province No. 1	580,000	17.0	2	16.6	4
			Province No. 2	424,267	12.4	4	20.8	2
			Province No. 3	1,190,721	34.9	1	21.3	1
			Gandaki	341,818	10.0	5	8.5	6
			Province No. 5	527,960	15.5	3	17.0	3
			Karnali	132,425	3.9	7	6.0	7
			Province No. 7	211,555	6.2	6	9.7	5
1	01		Taplejung	13,225	0.4	60	0.4	66
1	02		Sankhuwasabha	18,913	0.6	45	0.5	59
1	03		Solukhumbu	10,073	0.3	68	0.4	69
1	04		Okhaldhunga	14,201	0.4	55	0.5	62
1	05		Khotang	16,279	0.5	50	0.6	54
1	06		Bhojpur	10,660	0.3	65	0.6	58
1	07		Dhankuta	16,488	0.5	48	0.6	56
1	08		Terhathum	10,569	0.3	67	0.3	70
1	09		Panchthar	13,561	0.4	58	0.7	51
1	10		Ilam	28,436	0.8	38	1.1	33
1	11		Jhapa	129,180	3.8	5	3.1	5
1	12		Morang	143,386	4.2	3	3.6	2
1	13		Sunsari	126,481	3.7	6	3.0	6
1	14		Udayapur	28,548	0.8	37	1.2	29
2	01		Saptari	44,341	1.3	21	2.4	11
2	02		Siraha	43,902	1.3	22	2.4	13
2	03		Dhanusa	75,566	2.2	10	2.8	8
2	04		Mahottari	37,154	1.1	27	2.4	12
2	05		Sarlahi	69,909	2.1	12	3.0	7
2	06		Rautahat	42,196	1.2	23	2.8	9
2	07		Bara	51,950	1.5	16	2.7	10
2	08		Parsa	59,249	1.7	14	2.4	14
3	01		Dolakha	24,936	0.7	41	0.6	53
3	02		Sindhupalchok	26,178	0.8	40	1.0	34
3	03		Rasuwa	4,851	0.1	73	0.2	74
3	04		Dhading	34,895	1.0	32	1.2	28
3	05		Nuwakot	31,755	0.9	34	1.0	36
3	06		Kathmandu	575,003	16.9	1	7.3	1
3	07		Bhaktapur	81,695	2.4	9	1.2	27
3	08		Lalitpur	139,686	4.1	4	1.9	20
3	09		Kavrepalanchok	52,924	1.6	15	1.4	25
3	10		Ramechhap	16,606	0.5	47	0.7	49
3	11		Sindhuli	35,551	1.0	31	1.1	32
3	12		Makwanpur	48,697	1.4	18	1.6	23
3	13		Chitawan	117,944	3.5	7	2.3	15

Table 4. Provisional Number of Persons Engaged, Percent to Total, and Rank by District in 2018

Province Code	District Code		Provisional Number of Persons Engaged in 2018 (establishments)	Percent to Total Number of Nepal (%)	Rank	Percent to Total Projected Population of Nepal in 2018 1) (%)	Rank
	District Name						
4	01	Gorkha	31,644	0.9	35	0.9	43
4	02	Manang	2,375	0.1	77	0.0	77
4	03	Mustang	3,105	0.1	75	0.0	76
4	04	Myagdi	16,397	0.5	49	0.4	68
4	05	Kaski	111,999	3.3	8	1.9	19
4	06	Lamjung	29,410	0.9	36	0.6	55
4	07	Tanahu	36,085	1.1	30	1.2	31
4	08	Nawalparasi East	41,682	1.2	24	1.2	30
4	09	Syangja	23,474	0.7	42	0.9	42
4	10	Parbat	13,812	0.4	56	0.5	64
4	11	Baglung	31,835	0.9	33	1.0	38
5	01	Rukum East	2,753	0.1	76	0.2	72
5	02	Rolpa	15,651	0.5	51	0.8	46
5	03	Pyuthan	22,336	0.7	43	0.8	45
5	04	Gulmi	36,173	1.1	29	0.9	41
5	05	Arghakhanchi	15,324	0.4	52	0.7	50
5	06	Palpa	26,385	0.8	39	0.9	44
5	07	Nawalparasi West	48,548	1.4	19	1.3	26
5	08	Rupandehi	163,045	4.8	2	3.5	3
5	09	Kapilbastu	41,428	1.2	25	2.2	16
5	10	Dang	51,205	1.5	17	2.1	17
5	11	Banke	64,223	1.9	13	2.0	18
5	12	Bardiya	40,889	1.2	26	1.6	22
6	01	Dolpa	3,109	0.1	74	0.1	75
6	02	Mugu	7,471	0.2	71	0.2	71
6	03	Humla	5,707	0.2	72	0.2	73
6	04	Jumla	8,481	0.2	70	0.4	67
6	05	Kalikot	11,859	0.3	62	0.5	61
6	06	Dailekh	14,679	0.4	53	1.0	35
6	07	Jajarkot	10,574	0.3	66	0.7	52
6	08	Rukum West	12,736	0.4	61	0.6	57
6	09	Salyan	21,313	0.6	44	0.9	39
6	10	Surkhet	36,496	1.1	28	1.4	24
7	01	Bajura	11,133	0.3	64	0.5	63
7	02	Bajhang	18,098	0.5	46	0.7	47
7	03	Darchula	13,319	0.4	59	0.5	65
7	04	Baitadi	14,317	0.4	54	0.9	40
7	05	Dadeldhura	11,819	0.3	63	0.5	60
7	06	Doti	9,446	0.3	69	0.7	48
7	07	Achham	13,758	0.4	57	1.0	37
7	08	Kailali	71,287	2.1	11	3.1	4
7	09	Kanchanpur	48,378	1.4	20	1.8	21

1) The population of Nepal in 2018 is 29,218,867 projected by CBS.

Four new districts are Nawalparasi East, Nawalparasi West, Rukum East, and Rukum West.

Table 5. Provisional Number of Persons Engaged by Sex and District in 2018

Province Code		Provisional Number of Establishments in 2018 (establishments)	Provisional Number of Persons Engaged in 2018				Number of Persons Engaged per Establishment in 2018 (persons)
District Code	District Name		Total (persons)	Male (persons)	Female (persons)	Sex Ratio (M/F*100)	
	Nepal	922,445	3,408,746	2,044,989	1,363,757	150.0	3.7
	Province No. 1	168,434	580,000	334,190	245,810	136.0	3.4
	Province No. 2	117,588	424,267	294,363	129,904	226.6	3.6
	Province No. 3	282,056	1,190,721	697,077	493,644	141.2	4.2
	Gandaki	100,688	341,818	186,084	155,734	119.5	3.4
	Province No. 5	147,892	527,960	325,917	202,043	161.3	3.6
	Karnali	42,817	132,425	76,549	55,876	137.0	3.1
	Province No. 7	62,970	211,555	130,809	80,746	162.0	3.4
1	01 Taplejung	4,653	13,225	7,337	5,888	124.6	2.8
1	02 Sankhuwasabha	6,037	18,913	9,996	8,917	112.1	3.1
1	03 Solukhumbu	3,506	10,073	5,175	4,898	105.7	2.9
1	04 Okhaldhunga	4,350	14,201	7,406	6,795	109.0	3.3
1	05 Khotang	4,307	16,279	9,010	7,269	124.0	3.8
1	06 Bhojpur	4,074	10,660	5,974	4,686	127.5	2.6
1	07 Dhankuta	6,009	16,488	8,752	7,736	113.1	2.7
1	08 Terhathum	3,410	10,569	5,536	5,033	110.0	3.1
1	09 Panchthar	5,441	13,561	7,696	5,865	131.2	2.5
1	10 Ilam	9,667	28,436	15,692	12,744	123.1	2.9
1	11 Jhapa	38,741	129,180	74,043	55,137	134.3	3.3
1	12 Morang	35,237	143,386	88,961	54,425	163.5	4.1
1	13 Sunsari	31,486	126,481	72,741	53,740	135.4	4.0
1	14 Udayapur	11,516	28,548	15,871	12,677	125.2	2.5
2	01 Saptari	16,292	44,341	28,112	16,229	173.2	2.7
2	02 Siraha	13,163	43,902	28,989	14,913	194.4	3.3
2	03 Dhanusa	17,751	75,566	53,063	22,503	235.8	4.3
2	04 Mahottari	14,090	37,154	26,958	10,196	264.4	2.6
2	05 Sarlahi	15,324	69,909	42,841	27,068	158.3	4.6
2	06 Rautahat	12,796	42,196	31,659	10,537	300.5	3.3
2	07 Bara	12,455	51,950	39,023	12,927	301.9	4.2
2	08 Parsa	15,717	59,249	43,718	15,531	281.5	3.8
3	01 Dolakha	6,766	24,936	12,797	12,139	105.4	3.7
3	02 Sindhupalchok	9,105	26,178	13,340	12,838	103.9	2.9
3	03 Rasuwa	1,375	4,851	2,782	2,069	134.5	3.5
3	04 Dhading	12,052	34,895	17,958	16,937	106.0	2.9
3	05 Nuwakot	8,868	31,755	18,495	13,260	139.5	3.6
3	06 Kathmandu	123,994	575,003	345,065	229,938	150.1	4.6
3	07 Bhaktapur	19,629	81,695	47,179	34,516	136.7	4.2
3	08 Lalitpur	27,009	139,686	82,049	57,637	142.4	5.2
3	09 Kavrepalanchok	14,303	52,924	31,107	21,817	142.6	3.7
3	10 Ramechhap	5,609	16,606	8,761	7,845	111.7	3.0
3	11 Sindhuli	8,000	35,551	19,942	15,609	127.8	4.4
3	12 Makwanpur	16,078	48,697	29,424	19,273	152.7	3.0
3	13 Chitawan	29,268	117,944	68,178	49,766	137.0	4.0

Table 5. Provisional Number of Persons Engaged by Sex and District in 2018

Province Code	District Code		Provisional Number of Establishments in 2018 (establishments)	Provisional Number of Persons Engaged in 2018				Number of Persons Engaged per Establishment in 2018 (persons)
	District Name	Total		Male	Female	Sex Ratio		
		(persons)		(persons)	(persons)	(M/F*100)		
4	01	Gorkha	10,980	31,644	16,913	14,731	114.8	2.9
4	02	Manang	487	2,375	1,273	1,102	115.5	4.9
4	03	Mustang	775	3,105	1,775	1,330	133.5	4.0
4	04	Myagdi	5,065	16,397	8,321	8,076	103.0	3.2
4	05	Kaski	30,746	111,999	65,550	46,449	141.1	3.6
4	06	Lamjung	6,415	29,410	15,310	14,100	108.6	4.6
4	07	Tanahu	12,442	36,085	19,182	16,903	113.5	2.9
4	08	Nawalparasi East	12,782	41,682	21,505	20,177	106.6	3.3
4	09	Syangja	7,412	23,474	12,655	10,819	117.0	3.2
4	10	Parbat	4,735	13,812	7,480	6,332	118.1	2.9
4	11	Baglung	8,849	31,835	16,120	15,715	102.6	3.6
5	01	Rukum East	1,020	2,753	1,516	1,237	122.6	2.7
5	02	Rolpa	5,096	15,651	8,518	7,133	119.4	3.1
5	03	Pyuthan	5,632	22,336	12,168	10,168	119.7	4.0
5	04	Gulmi	9,547	36,173	17,826	18,347	97.2	3.8
5	05	Arghakhanchi	6,619	15,324	9,152	6,172	148.3	2.3
5	06	Palpa	8,701	26,385	14,208	12,177	116.7	3.0
5	07	Nawalparasi West	11,226	48,548	29,763	18,785	158.4	4.3
5	08	Rupandehi	38,415	163,045	105,912	57,133	185.4	4.2
5	09	Kapilbastu	13,607	41,428	30,185	11,243	268.5	3.0
5	10	Dang	14,415	51,205	28,402	22,803	124.6	3.6
5	11	Banke	18,698	64,223	43,701	20,522	212.9	3.4
5	12	Bardiya	14,916	40,889	24,566	16,323	150.5	2.7
6	01	Dolpa	861	3,109	1,838	1,271	144.6	3.6
6	02	Mugu	1,783	7,471	3,543	3,928	90.2	4.2
6	03	Humla	2,015	5,707	3,709	1,998	185.6	2.8
6	04	Jumla	3,078	8,481	5,212	3,269	159.4	2.8
6	05	Kalikot	3,535	11,859	7,169	4,690	152.9	3.4
6	06	Dailekh	6,314	14,679	8,637	6,042	142.9	2.3
6	07	Jajarkot	3,308	10,574	6,358	4,216	150.8	3.2
6	08	Rukum West	4,001	12,736	7,531	5,205	144.7	3.2
6	09	Salyan	6,098	21,313	11,883	9,430	126.0	3.5
6	10	Surkhet	11,824	36,496	20,669	15,827	130.6	3.1
7	01	Bajura	3,901	11,133	6,408	4,725	135.6	2.9
7	02	Bajhang	6,215	18,098	10,175	7,923	128.4	2.9
7	03	Darchula	3,417	13,319	7,490	5,829	128.5	3.9
7	04	Baitadi	4,408	14,317	9,857	4,460	221.0	3.2
7	05	Dadeldhura	4,058	11,819	8,060	3,759	214.4	2.9
7	06	Doti	3,667	9,446	6,107	3,339	182.9	2.6
7	07	Achham	4,282	13,758	9,514	4,244	224.2	3.2
7	08	Kailali	21,528	71,287	44,007	27,280	161.3	3.3
7	09	Kanchanpur	11,494	48,378	29,191	19,187	152.1	4.2

SECTION V:

Appendices

STRICTLY CONFIDENTIAL



Government of Nepal
National Planning Commission



Central Bureau of Statistics
National Economic Census 2018
Form B

The information collected with this questionnaire will be kept confidential according to Statistical Act, 1958 of Nepal. No any information of individual business establishment will be published as not to disclose individual identification. The information collected in this census will not be used for taxation purpose. These collected individual data will only be used as statistical aggregates.

Please fill in the following questions as of Baishakh 1, 2075 (14 April 2018 in Western calendar) if no other individual instruction. The questions should be asked to establishment owner, manager, or concerned person of the establishment.

If a response is not applicable, please fill in a bar "-" in the appropriate box.

1- Area Information			AI
Area	Name	Code	
AI1. District			
AI2. Municipality/ Rural Municipality			
AI3. Ward			
AI4. Village/ Settlement Name			
AI5. Enumeration Area (EA)			
AI6. Sub Enumeration Area (SEA)			

2- Establishment Information			
EI1. Establishment Number (Given Number) (Please transcribe from column 2 of Form A: Establishment List.)			
EI2. Name of Establishment or Business			
EI3. Type of Business			
EI4. Address of Establishment	EI4A. Name of Road/ Street:		EI4B. House Number:
	EI4C. Name of the Business Complex/ Mall/ Building:		
	EI4D. Flat Number/ Floor Number:		EI4E. Shop Number:
EI5. Information for Contact	EI5A. Phone Number of Establishment:	EI5B. E-mail Address:	
	EI5C. Website Address:		
	EI5D. Name of Contact Person:	EI5E. Designation of Contact Person:	EI5F. Phone Number of Contact Person:

3- Registration at Government Agencies			
RI1. Is this establishment registered at any Government Agencies? (if not go to OW1)	1- Registered	2- Not registered (Go to OW1)	<input type="text"/>

Registered or not at the following Government Agencies			
RI2. Inland Revenue Office	1- Registered	2- Not registered (Go to RI3)	<input type="text"/>
RI2.1 Permanent Account Number (PAN) , VAT No., or TPIN	<input type="text"/>	<input type="text"/>	<input type="text"/>
RI3. District Office/ Development Committee of Cottage and Small Industries	1- Registered	2- Not registered	<input type="text"/>
RI4. Office of Company Registrar	1- Registered	2- Not registered	<input type="text"/>
RI5. Department of Industry	1- Registered	2- Not registered	<input type="text"/>
RI6. Office of Commerce and Supplies	1- Registered	2- Not registered	<input type="text"/>
RI7. District Administrative Office	1- Registered	2- Not registered	<input type="text"/>
RI8. Ministry of Health	1- Registered	2- Not registered	<input type="text"/>
RI9. Ministry of Education	1- Registered	2- Not registered	<input type="text"/>
RI10. Office of Cooperative Registrar	1- Registered	2- Not registered	<input type="text"/>
RI11. District Development Committee/ District Coordinating Committee	1- Registered	2- Not registered	<input type="text"/>
RI12. Municipality/ VDC/ Rural Municipality	1- Registered	2- Not registered	<input type="text"/>
RI13A. Other (specify):			<input type="text"/> <i>CBS and SOs use only</i>
RI13B. Other (specify):			<input type="text"/>

4- Legal Status of Registered Establishment or Business		
LS1. Legal Status of Registered Establishment or Business		
1- Individual proprietor	6- Government agency	<input type="text"/>
2- Partnership	7- State-owned organization (including quasi government and autonomy-owned organization)	
3- Private limited company	8- NGO (Non-Governmental Organization)	
4- Public limited company	9- Users' Group / Consumer Group	
5- Cooperative	10- Others (specify):	
LS2. Is this Establishment or Business Multinational Company ?		
	1- Yes	<input type="text"/>
	2- No	

5- Ownership Status of "Not Registered" Establishment or Business	
OW1. Ownership of "Not Registered" Establishment or Business	
1- Individual proprietor	<input type="text"/>
2- Partnership	
3- Others (specify)	

6- Characteristics of Manager and Owner (If there are any owners, the most investing owner should be filled in.)			
MO1. Sex of Manager	1- Male 2- Female	<input type="text"/>	Age in completed years
MO2. Sex of Owner	1- Male 2- Female 8- Not applicable (Go to BO1)	<input type="text"/>	Age in completed years
MO3. Country of Owner	1- Nepal 2- India 3- Pakistan 4- Bangladesh 5- Sri Lanka 6- Malaysia 7- Thailand 8- Singapore	9- Other ASEAN countries 10- China 11- Japan 12- Gulf countries 13- United State of America 14- United Kingdom 15- EU countries 16- Others (specify country)	<input type="text"/>

7- Business Operation Information				
	o'clock	minutes	working hours	Circle either of them
BO1. Opening Time				1- AM 2- PM
BO2. Closing Time				1- AM 2- PM
BO3. Working Hours				

BO4. Business Period Is this establishment regularly operating through the year? Circle Yes or No.	1- Yes 2- No (seasonal business) (Go to BO6)	<input type="checkbox"/>	
BO5. How many working days did this establishment have for the last one year?	<input type="text"/> working days (Go to BO8)		
BO6. When is the season? Choose the opening month and the closing month.	Opening month 1 Baishakh 2 Jestha 3 Ashadh 4 Shrawan 5 Bhadra 6 Ashwin 7 Kartik 8 Mangsir 9 Poush 10 Magh 11 Phalgun 12 Chaitra	Closing month 1 Baishakh 2 Jestha 3 Ashadh 4 Shrawan 5 Bhadra 6 Ashwin 7 Kartik 8 Mangsir 9 Poush 10 Magh 11 Phalgun 12 Chaitra	Opening month <input type="text"/> Closing month <input type="text"/>

BO7. How many working days did this establishment have in the season?	<input type="text"/> working days				
BO8 Year of Starting the Business (Baishakh 1, 2075 in Nepali calendar is April 14, 2018 in western calendar.) ► Fill in the month and year of starting the business in Nepali calendar.	<table border="1"> <tr> <td>mm</td> <td>yyyy</td> </tr> <tr> <td><input type="text"/></td> <td><input type="text"/></td> </tr> </table>	mm	yyyy	<input type="text"/>	<input type="text"/>
mm	yyyy				
<input type="text"/>	<input type="text"/>				

8- Tenure, Kind, and Area (square feet: ft ²) of Business Place (If using land directly, respond not only building but also land.)		
BP1. Tenure of Business Place (Building)	1- Owned 2- Rented 3- Lease or contract out 4- Others (Specify:) 8- Not applicable	<input style="width: 60px; height: 30px;" type="text"/>
BP2. Tenure of Business Place (Land)	1- Owned 2- Rented 3- Lease or contract out 4- Others (Specify:) 8- Not applicable	<input style="width: 60px; height: 30px;" type="text"/>
BP3. Kind of Business Place	1- Street business 2- Home business (Business place and owner's residence are united into one) 3- Business in a building with sturdy construction for shop, office, apartment, etc. (Business place and owner's residence are separate.) 4- Business in traditional market with flat building or simple construction 5- Business in modern shopping mall with signboard and sturdy construction (building with more than two stories where a number of establishments are operating) 6- Business occupying exclusively one block or one building with signboard and sturdy construction (Ex: Factory, Bank, Hospital, School, Hotel, etc.) 7- Others	<input style="width: 60px; height: 30px;" type="text"/>
BP4. Total Area of Business Place (square feet: ft²)		
BP4.1 Building / Room occupied area using for Business (square feet: ft²)	1- Yes 2- Not applicable (Go to BP4,2)	Specify the total area ft ²
BP4.2 Land occupied area using for Business (square feet: ft²)	1- Yes 2- Not applicable (Go to Part 9)	Specify the total area ft ²

9- Number of Persons Engaged in this establishment as of the reference date						
(In the case of "Head office" (OF1), all persons engaged in its branch office(s) and subbranch office(s) are excluded.)						
(1)	(2)	Persons engaged				
		1- Total	Nepali		Foreigner	
			2- Male	3- Female	4- Male	5- Female
(3)	(4)	(5)	(6)	(7)		
PE1.1	Working proprietors/ partners					
PE1.2	Unpaid family workers					
PE1.3	Working directors (Managers) (excluding unpaid directors)					
PE1.4	Regular employees (those who are employed on a continuous basis with six month period or longer)					
PE1.5	Temporary employees (other employees than "regular employees")					
PE1.	Total number of persons engaged (Total of "PE1.1" to "PE1.5")					

(1)	(2)	Persons engaged or Workers				
		1- Total	Nepali		Foreigner	
			2- Male	3- Female	4- Male	5- Female
(3)	(4)	(5)	(6)	(7)		
PE2.1	Aged 15 and under					
PE2.2	Technical staff					
PE2.3	Disabled staff					
PE2.4	Accepted workers from other institutions (Other than the employees cited in PE1, persons dispatched from separately operated establishments to work at the establishment)					

10- Main Economic Activity		
<p>► Describe a main economic activity that is done in this establishment. For example, selling (to wholesalers or consumers), manufacturing or repairing goods, or providing services.</p> <p>► Describe about these goods or services also.</p> <p>► In the case of "Head office" (OF1), all activities of its branch office(s) are excluded.</p>		
EA1. Main Economic Activity	<p>.....</p> <p>.....</p> <p>.....</p>	<p><i>CBS and SOs use only</i></p> <div style="border: 1px solid black; width: 100px; height: 30px; margin: 0 auto;"></div>

11- Single Unit, Head Office or Branch Office										
OF1. Single Unit, Head Office, or Branch Office	1- Single unit (Go to AR1) 2- Head office (Go to HO1) 3- Branch office 4- Subbranch office	<input style="width: 60px; height: 25px; border: 1px solid black;" type="text"/>								
OF2. Name, Address and PAN of Head Office ▶ In case of "Branch office" or "Subbranch office". ▶ In case of "Subbranch office", fill in the name and address of its upper-level office.										
OF2.1 Name:	(Go to Part 18)									
OF2.2 Address:										
OF2.3 Permanent Account Number (PAN): <table border="1" style="width: 100%; height: 20px; border-collapse: collapse;"> <tr> <td style="width: 10%;"></td> <td style="width: 10%;"></td> <td style="width: 10%;"></td> <td style="width: 10%;"></td> <td style="width: 10%;"></td> <td style="width: 10%;"></td> <td style="width: 10%;"></td> <td style="width: 10%;"></td> <td style="width: 10%;"></td> <td style="width: 10%;"></td> </tr> </table>										

12- Questions HO1 to HO4 below refer only to establishments of "Head office".	
HO1. Number of Branch Offices and Subbranch Offices that establishment supervises	<input style="width: 80%; height: 25px; border: 1px solid black;" type="text"/>
HO2. Total number of entire regular employees ▶ The "entire regular employees" include regular employees of head office, branch office(s), and subbranch office(s) (namely, "Head office + Branch office(s) + Subbranch office(s)")	<input style="width: 80%; height: 25px; border: 1px solid black;" type="text"/>

Economic activities of the entire entity that include not only those of this head office but also those of branch office(s) and subbranch office(s) (namely, "Head office + Branch office(s) + Subbranch office(s)")		
HO3. Main economic activity ▶ State a main economic activity in terms of the largest value added or the largest manpower input.	<i>CBS and SOs use only</i> <input style="width: 80%; height: 25px; border: 1px solid black;" type="text"/>
HO4. Secondary economic activity if this entity has two or more kinds of economic activities.	<input style="width: 80%; height: 25px; border: 1px solid black;" type="text"/>

Part 13 to 17 are asked only to establishments of "Single unit" and "Head office".		
13- Accounting Record		
AR1. Does this establishment or this enterprise prepare its accounting record? <ul style="list-style-type: none"> ▶ An accounting record includes an account book, an income statement, etc. ▶ An enterprise consists of a head office and its branches. 	1- Yes 2- No	<input style="width: 80px; height: 30px;" type="text"/>
14- Average monthly revenues/ sales and operating expenses in the fiscal year of 2073/2074 or in 2074		
<ul style="list-style-type: none"> ▶ If the average monthly figures are unclear, that of past one month should be filled in. ▶ In the case of "Head office", average amount of revenues/ sales and operating expenses including its branch office(s) and subbranch offices should be filled in. ▶ These amounts should be filled in with left alignment and a thousand separator, ending with a bar "-". 		
IE1. Average monthly revenues/sales in fiscal year of 2073/2074 or in 2074 <ul style="list-style-type: none"> ▶ Include all income gained from operating activities such as selling of goods, providing services, etc. (Sales and non-operating revenues) 	Rs. _____	
IE2. Average monthly expenses in fiscal year of 2073/2074 or in 2074 <ul style="list-style-type: none"> ▶ Include all expenses for operating activities such as purchase of products for sales, costs for providing services, rent for shops, salaries and wages for managers and workers, tax, etc. (Cost of goods sold, operating expenses, non-operating expenses, and tax) 	Rs. _____	
IE2.1 Average monthly compensation (salaries and wages) for managers and workers in fiscal year of 2073/2074 or in 2074	Rs. _____	
15- Capital and Ratio of Foreign Capital		
CI1. Capital <ul style="list-style-type: none"> ▶ Fill in the amount of capital, investment, and funds, (both fixed and current capital) ▶ This amount should be filled in with left alignment and a thousand separator, ending with a bar. 	Rs. _____	
CI1.1 Ratio of Foreign Capital (Please round off it to the one decimal place.)	_____ . _____ %	
CI2.2 Fixed Capital Land, building, plant, equipment, machineries, etc.	Rs. _____	

16- Access for Credit					
AC1. Has this establishment or this enterprise borrowed or paid back financial loan for business purpose within the last three years? ▶ Circle the code.		1- Yes 2- No (Go to AC4)			<input type="text"/>
AC2. From where has this establishment or this enterprise borrowed the financial loan?		1- Bank 2- Finance 3- Micro Finance 4- Cooperative 5- Personal 6- Other Institutions			<input type="text"/>
AC3. How much is its average interest rate per year? (Please round off it to the one decimal place.)				.	%
AC4. Has this establishment or this enterprise had experience that it couldn't borrow institutional financial loan although it tried to do? ▶ Circle the code.		1- Yes 2- No			Go to PC1

17- Parent Company					
PC1. Does this establishment have a parent company? Parent company holds a majority of all shares in this company.		1- Yes 2- No (Go to CS1)			<input type="text"/>
PC2. Name, Address and PAN of Parent Company					
PC2.1 Name:					
PC2.2 Address:					
PC2.3 Permanent Account Number (PAN):					

18- Census Status (To be filled in by enumerator)

SS1. Status of Survey ▶ Circle the code.		1- Completely enumerated 2- Partially completed 3- Unable to complete			<input type="text"/>
--	--	---	--	--	----------------------

19- Respondent's Information

Respondent's Name :					
Designation :					
Date of Interview :					
Stamp of Establishment :					

	Name	Signature	Date
Enumerator			
Supervisor			

Coverage of Nepal Economic Census 2018

Section of ISIC Rev. 4		Kind of Establishment		
		Registered / Not registered	Not registered	
		Fixed location	Movable but the same place	Mobile
A	Agriculture, forestry and fishing	(Registered only)		
B	Mining and quarrying			
C	Manufacturing			
D	Electricity, gas, steam and air conditioning supply			
E	Water supply; sewerage, waste management and remediation activities			
F	Construction			
G	Wholesale and retail trade; repair of motor vehicles and motorcycles			
H	Transportation and storage			
I	Accommodation and food service activities			
J	Information and communication			
K	Financial and insurance activities			
L	Real estate activities			
M	Professional, scientific and technical activities			
N	Administrative and support service activities			
O	Public administration and defence; compulsory social security			
P	Education			
Q	Human health and social work activities			
R	Arts, entertainment and recreation			
S	Other service activities			
T	Activities of households as employers; undifferentiated goods- and services-producing activities of households for own use			
U	Activities of extraterritorial organizations and bodies			

shows the coverage of the Economic Census.



Government of Nepal
National Planning Commission
Central Bureau of Statistics
National Economic Census 2018
Enumerator's Control Form



(Each enumerator should fill in this control form compulsory before submit Form B to his/her field supervisor.)

District Name: _____

District Code: _____

S.N.	Urban/ Rural Municipality		Ward Number	Enumeration Area Code	Sub Enumeration Area Code	Number of pages Form A	Number of Filled in Form B (paper)	Number of Filled in Form B (Tablet)	Number of Filled in Form B (e-Census)	Total Number of Form B	Total Number of Engaged Persons (Based on Paper Form B) (Copy from Section 9 Question No. PE1)	
	Name	Code									Female	Male
1	2	3	4	5	6	7	8	9	10	11= (8+9+10)	12	13
1.												
2.												
3.												
4.												
5.												
6.												
7.												
8.												
9.												

V-15

Note: If these given rows are not sufficient to fill in, please use next additional control forms.

Name of Enumerator: _____

Signature: _____

Phone Number: _____

Name of Supervisor: _____

Signature: _____

Phone Number: _____

Name of District Economic Census Officer: _____

Signature: _____

Phone Number: _____



From
the People of Japan

