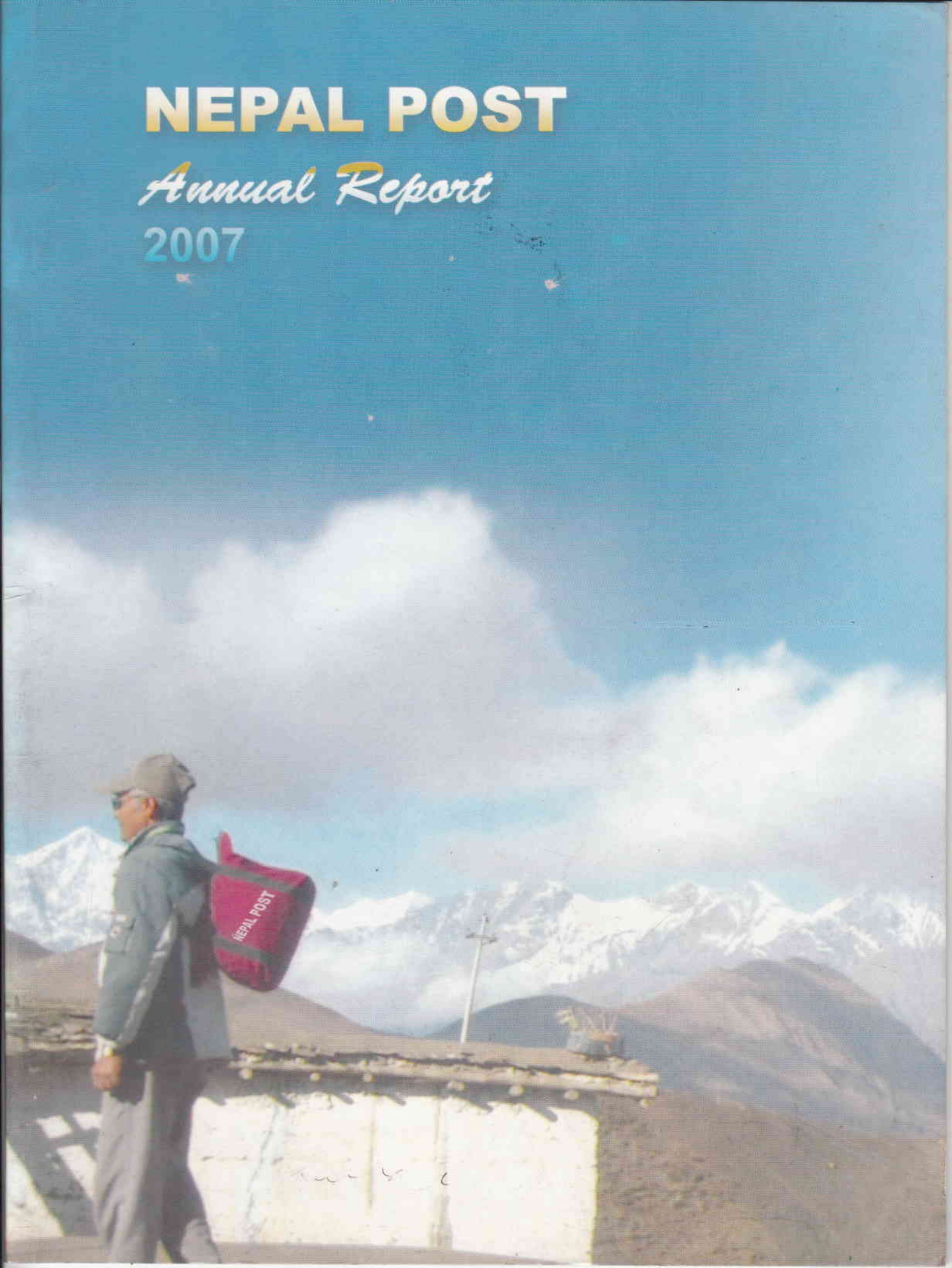


NEPAL POST

Annual Report

2007



NEPAL POST Annual Report 2007



Published and Distributed by :

Postal Services Department
Kathmandu, Nepal.

This Report

This Annual Report of Nepal Post reflects our accountability to our great clients, customers, employees and the Nepalese society.

It provides basic information about Postal services, its performance and activities.

Cover Page Photograph

Mail runner carrying mail in a harsh

Terrain of Himalaya

Photo courtesy:

Divakar Devkota

Published and Distributed by :

Postal Services Department

Kathmandu

Phone (+977 1) 4411353

4410244, 4421283

Fax (+977 1) 4414688

E-mail: psd@nepalpost.gov.np

©All rights reserved.

Contents

1.	Nepal Post in a Nut-Shell	1
2.	Nepal Postal Services	2
3.	Organization Structure.....	3-5
4.	Post Offices.....	5-6
5.	Mail Traffic.....	7-11
6.	Express Mail Service (EMS).....	12-13
7.	Same Day Delivery Service.....	14
8.	Letter Boxes.....	14
9.	Post Box Service	14-15
10.	Postal Financial Services	15-17
11.	Financial Report	17-18
12.	Human Resource	19-22
13.	International Relations.....	23
14.	World Post Day.....	23
15.	Technical Assistance.....	23
16.	E-Post.....	24
17.	Philately	24-26
18.	Agency Function.....	27
19.	Miscellaneous	27-28

NEPAL POST IN A NUT-SHELL

	2006	2007
Number of Postal Outlets	3,991	3,991
Number of Employees:		
Full Time	9,952	9,952
Part Time	10,777	10,777
Male		90%
Female		10%
Total	20,729	20,729
<u>Mail Turnover:</u>		
Inland Mail handled	77,291,655	73,283,010
Foreign Mails (Dispatch)	3,744,342	3,763,625
Foreign Mails (Receipt)	3,270,595	3,219,710
Parcels (Dispatch)	2,028	2,112
Parcels (Receipt)	14,457	17,301
EMS Domestic handled	128,055	129,652
EMS International handled	43,535	62,841
EMS Domestic linkage	62	62
EMS International linkage	38	38
<u>Money Order handled (Rs.):</u>		
Inland	24,058,618	18,635,225
Foreign	11,118,337	11,799,554
<u>Postal Saving Bank:</u>		
Number of Accounts	11,515	35,740
Deposit in Saving Amount (NRs.)	545,015,971	719,993,272
Number of Post Boxes available	21,525	21,942
Total revenue (NRs)	261,554,525	244,321,664
Total expenditure (NRs)	916,393,263	1,001,557,000

POSTAL SERVICES IN NEPAL

The establishment of an agency called Nepal Hulak Ghar (General Post Office) in 1878 A.D. in Kathmandu for dealing with letters from the public marks the formal beginning of the era of modern postal system in Nepal. Customers had to pay the charges in cash. For the first time three types of postage stamps of one, two, and three Annas (fraction of a Paisa) were brought into use in 1881 replacing the earlier method of paying charges in cash. Similarly, from 1887, post cards of two Paisa (fraction of a Rupee) value were brought into use. With the dawn of democracy in 1951, successive efforts were made for the expansion and development of postal service in Nepal. Nepal became member of the Universal Postal Union in 1956 (Ottawa Congress).

In 1974, Nepal signed the UPU Parcel Post Agreement. Nepal dispatches direct closed letter mail to 33 countries and makes up closed parcel mails to 11 countries, by air. Nepal became membership of the Asian-Pacific Postal Union in 1982. After the restoration of multiparty democracy in the country in 1990 a new and comprehensive National Communication Policy 1992, was brought out by the Ministry of Information and Communications of the Government of Nepal. For the first time the concept of transforming the Postal Services into a self-autonomous body under the government was envisaged.

Domestic Express Mail Service (EMS) was introduced in 1989 while the International Express mail commenced in 1995. Nepal signed Postal Payment Service Agreement of Universal Postal Union (UPU) in 2004 during the Bucharest Congress of UPU. Similarly, the international money order was extended to four more countries in 2004 and one country in 2005.

ORGANIZATIONAL STRUCTURE

Postal Services Department is headed by Director General. The Department implements the approved postal policy and manages postal communication in the country.

In addition to GPO, 4 central offices and 5 regional directorates function under the Postal Services Department.

Postal Training Center:

Postal Training Center is located in Kathmandu. It imparts postal trainings for the postal employees on various courses in Kathmandu and conducts mobile training for junior level employees at different parts of the country.

Central Money Order Office:

Central Money Order Office maintains central accounts of Postal Saving Bank and domestic and international Money Order Services.

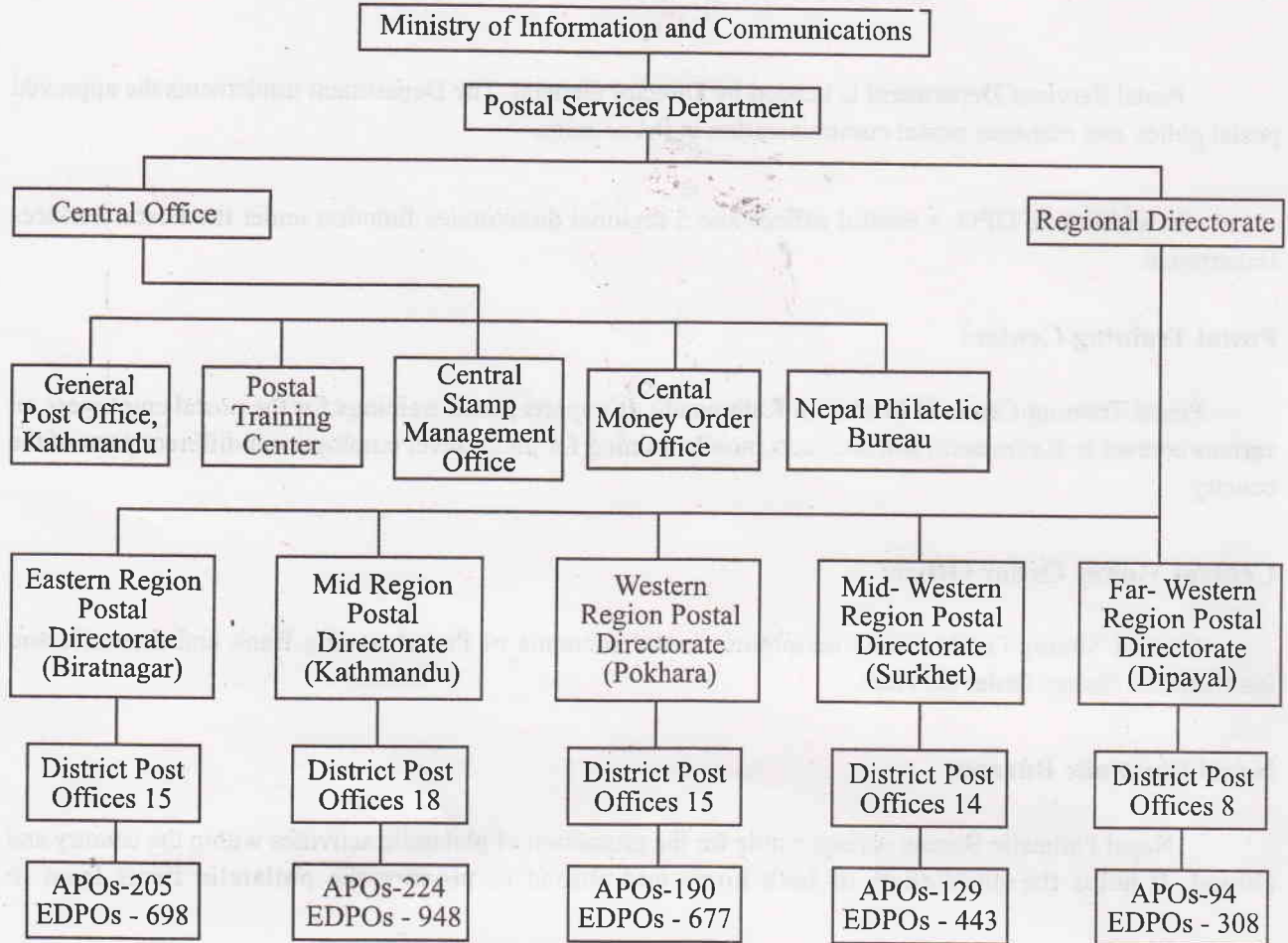
Nepal Philatelic Bureau:

Nepal Philatelic Bureau is responsible for the promotion of philatelic activities within the country and abroad. It helps the philatelists of both home and abroad to procure the philatelic items from it.

Central Stamp Management Office:

Postal Stamp Management Office in Kathmandu supplies postage stamp and stationeries to post offices and Nepal Philatelic Bureau. It also stores stamps and keeps stock account.

ORGANIZATION CHART



Postal Services Department	
G.P.O. –	1
Central Office –	4
Regional Directorate –	5
District Post Office –	70
Area Post office –	842
Extra-Dept. Post Office –	3074

Total Number of Post Office –	3996
Number of Postal Outlets -	3991

Total Number of Employee	
<u>Gazetted Level</u>	
Ist Class –	2
2 nd Class –	18
3 rd Class –	122
<u>Non-Gazetted Level</u>	
1 st Class –	335
2 nd Class –	1651
3 rd Class –	904
<u>Non-Graded Level</u>	
(Typist, Postman, Runner, Peon & Driver) – 6920	

Regular Employees –	9,952
Extra-Departmental Post Offices Employees	-10,777
Male employee-----	90% - In Total
Female employee-----	10% - In Total

POSTMAN AND RUNNER

S.No.	Office	Postman	Runner	Total
1	General Post Office	120	34	154
2	Regional Directorates (4)	56	262	318
3	A Class DPO (4)	56	123	179
4	B Class DPO (6)	80	193	273
5	C Class DPO (60)	396	3,136	3,532
6	A Class APO (4)	37	-	
7	B Class APO (17)	70	-	70
8	C Class APO (190)	889	-	889
9	D Class APO (616)	998	-	998
	Total	2,702	3,748	6,450

POST OFFICES

In 2007, 3991 postal outlets had been providing postal services in the country.

General Post Office

Regional Postal Directorate

District Post Office

Area Post office

} Operated by Government employees (Full time staffs)

Extra Departmental Post Office - operated by Non-Government employees (Part time staffs)

General Post Office (GPO)

Five **Regional Directorates** operate under the Department; one in each development region headed by Regional Director. **Regional Postal Directorates** are the administrative extension of Postal Services Department dealing primarily with the control, supervision, inspection and crime investigation of post offices in the respective region. There are currently 5 **Regional Postal Directorates in Nepal**. With the exception of Mid-Region Postal Directorate, other 4 Regional Directorates are responsible for providing postal services of the District Post Office, where they are located.

District Post Office (DPO)

There are 70 District Post Offices in Nepal. They are responsible for the management, control, supervision and inspection of **Area Post Office and Extra – Department Post Office** of the district. They supply postage stamps and material for the Area Post Office and Extra-Department Post Offices.

Area Post Office (APO)

Politically and administratively, a district is divided into different areas. At least one Area Post Office serves in one area. Tenth Development Plan has a target to establish Area Post Office in all the remaining areas of Nepal without postal service. Area Post Offices sale postage stamps and offer letter, registered and insured items. They deliver ordinary, registered and insured letters, money order and domestic parcels. Some Area Post Offices provide Money Order Service only while other offers both Money Order and Postal Saving Bank Service.

Extra – Department Post Office (EDPO)

Extra-Department Post Offices provide postal services to the local people on part time basis. One postal agent, one delivery agent and some mail runners are engaged in running the EDPOs. The district post office recruits the agents through a selection process. Usually, the agents are the shopkeepers, teachers or well-known person of the village who can spare time and make available space for conducting of postal services. They draw a fixed salary from the government. EDPOs are opened for a minimum of 2 hours on every working day and provide the following services.

- Selling postal stamps and stationeries.
- Accepting registered letters.
- Collecting postal items for dispatch.
- Delivering postal items within the village area.
- Dispatching mail to the concerning District Post Office and Areas Post Offices.

Table – 1

The following table presents the region-wise break down of the postal outlets of the year.

Development Region	General Post Office	Regional Directorate	District Post Office	Area Post Office	Extra Department Post Office	Total
Eastern	-	1	15	205	698	919
Mid	1	-	18	224	948	1,191
Western	-	1	15	190	677	883
Mid-western	-	1	14	129	443	587
Far-Western	-	1	8	94	308	411
Total	1	4	70	842	3,074	3,991

MAIL TRAFFIC

Inland Mail:

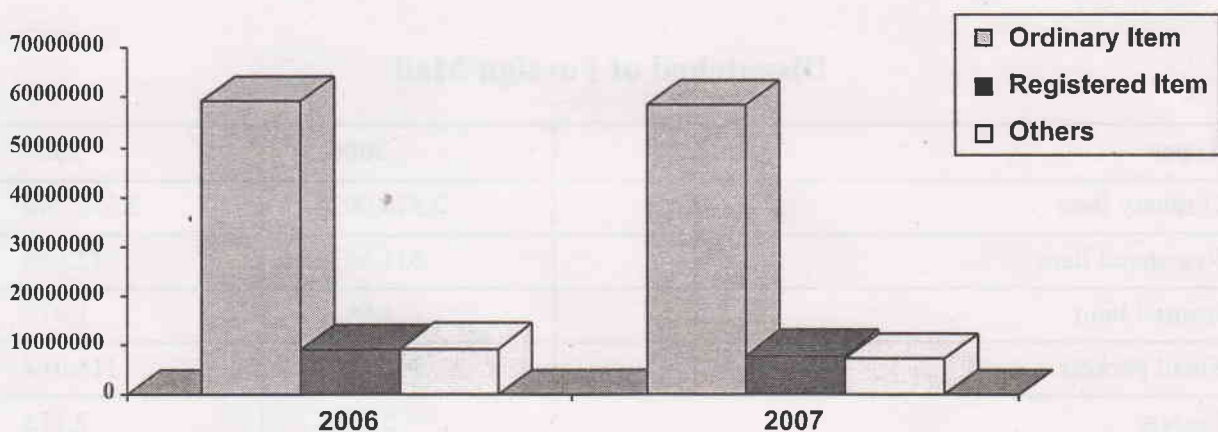
In the year 2007, 73,283,010 item of domestic mail was handled. This is less than the last year handled. The total mail items handled in 2006 is 77,291,655.

Table – 2

Inland mail articles handled

Types	Year	
	2006	2007
Ordinary Item	59,140,366	58,367,883
Registered Item	8,891,373	7,824,449
Insured Item	22,590	21,365
Small packets	671,547	351,692
Registered Newspapers & Periodicals & Blind literature	6,536,138	4,336,494
Parcels	1,525,691	1,952,400
Book post	503,950	427,827
Total	77,291,655	73,283,010

Inland Mail Articles Handled



Note:-

Total number of inland mail articles handled is decreased by about 5.18% in comparison to 2006 year, due to the uses of modern communication media like cello phone, fax, E-net-phone etc. and increment of private currier service.



(A woman mail runner crossing suspension bridge in Jomsom of Mustang District. Mt. Nilgiri on the background.)

Foreign Mail

In 2007, a total number of mail articles 3763625 were dispatched to foreign countries compared to 3744342 mail items in 2006. The number represent increased by about 0.51 percent.

Table – 3

Dispatched of Foreign Mail

Types	2006	2007
Ordinary Item	2,514,002	2,551,740
Registered Item	511,663	512,838
Insured Item	1,982	1,973
Small packets	116,102	118,014
Parcels	2,028	2,112
Regd. Newspapers , blind literature, Periodicals	553,157	515,807
Book post	45,408	61,141
Total	3,744,342	3,763,625

FOREIGN MAIL TURNOVER

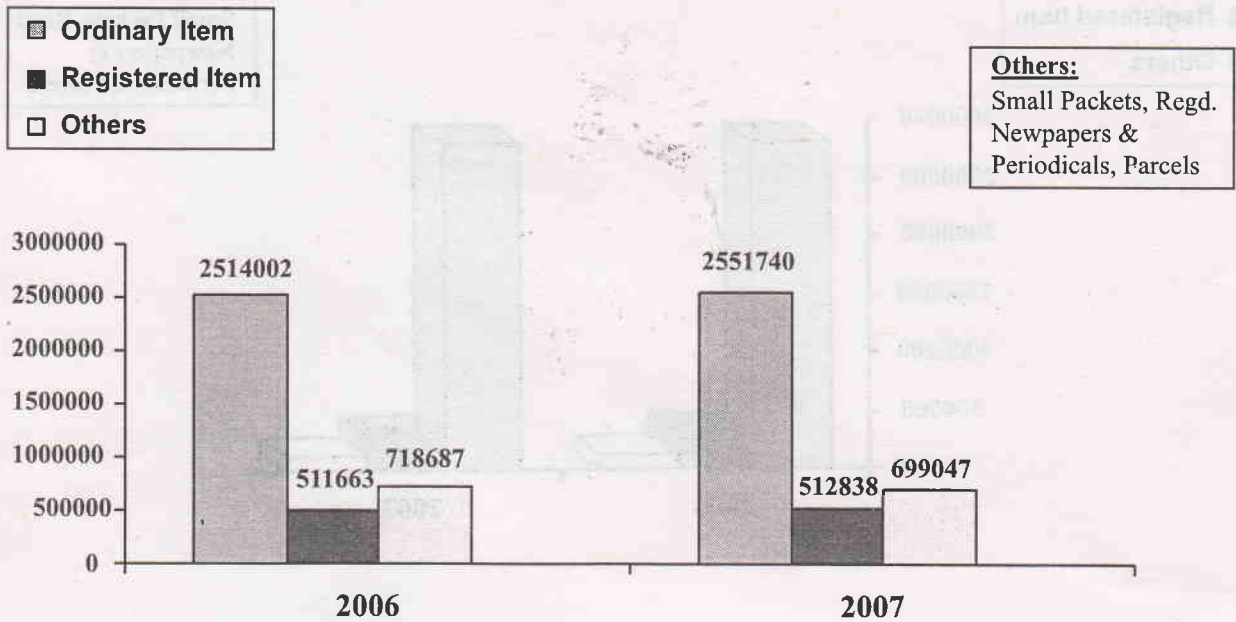


Table – 4

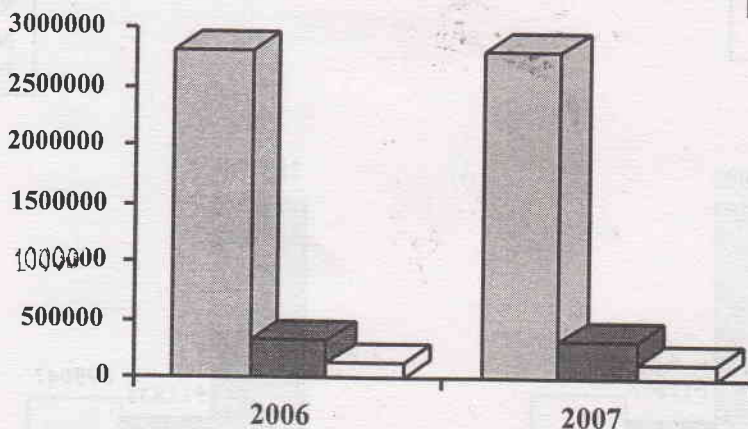
Receipt of Foreign Mail

Types and year	2006	2007
Ordinary Item	2,814,134	2,821,380
Registered Item	318,489	320,075
Insured Item	3,219	2,073
Small packets	22,239	19,568
Parcels	14,457	17,301
Registered Newspapers & Periodicals	47,851	58,120
Book post	38,996	34,530
Total	3,270,595	3,273,047

Foreign Mail Received

- Ordinary Item
- Registered Item
- Others

- Others:**
Small Packets, Regd. Newspapers & Periodicals, Parcels



Parcel Service

Parcel mails are dispatched directly to 13 countries by air. Parcel mails for other countries are sent through the transit countries.

Parcel (Dispatched):

Parcels can be booked at Parcel Section of Kathmandu GPO, Eastern Region Postal Directorate, Biratnagar and District Post Office, Rupandehi. The Parcel Section of Kathmandu GPO serves as the Office of Exchange of parcel mail.

Table-5

Number of Parcel Dispatch

Year	2006	2007
Items	2,028	2,112

Parcel received from destination by air and sea :

The over all situations of the number of parcels received by Nepal Post in 2006 and 2007 are shown below.

Table-6

Parcel (Received):

Year	2006	2007
Items	14,457	17,301



(Mail Workers Processing International Parcel Bags.)

EXPRESS MAIL SERVICE (EMS)

Express Mail Service offers on time delivery of urgent document and merchandise items. Domestic EMS service was introduced in 1991, initially at 7 municipalities with two-way link to and from Kathmandu. Today, 62 post offices provide domestic EMS. Out of this, six district post offices dispatch domestic EMS mails directly between them.

International EMS was introduced in 1995. Today (2007), it is linked with 38 countries of the world. The International EMS items received in Nepal are delivered through its 62 domestic EMS network. International EMS will be extended to more countries in 2008.

General Post Office and 4 other counters located in Kathmandu Metropolitan City accept International EMS items. District Post Office in Sub-metropolitan City of Lalitpur, Regional Postal Directorates in sub-metropolitan city of Pokhara and Regional Postal Directorates in sub-metropolitan city of Biratnagar, District Post Offices in the municipality of Dhahran and DPO, Sidharthanagar municipalities, DPO Jhapa of Bhadrapur municipalities, DPO Saptari Rajbiraj municipalities and APO Itahari also accept International EMS items.



(Customer booking EMS article at the EMS counter of GPO Kathmandu)

Note:-

GPO = General Post Office

DPO = District Post Office

APO = Area Post Office

RPD = Regional Postal Directorates

Table – 7
Domestic EMS Traffic in
2006 and 2007

EMS Items booked	
Year	Items
2006	128,055
2007	129,652

The above tabulation chart shows the booking of Domestic Express Mail items in 2007 was increased by 1.24 % which is a bright indicator of this service in coming years.

The International EMS articles handled
Between 2003 and 2007

Table – 8

Year	EMS Item Received		EMS Item Dispatched		Total handled	
	Document	Merchandise	Document	Merchandise	Document	Merchandise
2003	13,186	10,564	8,784	3,727	21,970	14,291
2004	15,137	10,524	10,239	3,658	25,376	14,182
2005	14,624	11,069	12,340	4,251	26,964	15,320
2006	14,874	11,274	12,385	4,992	27,259	16,266
2007	16,996	12,693	23,444	9,708	40,440	22,401

The handling of International EMS items have increased by 44.37 % in 2007 compared to 2006. In 2007, 23444 International EMS document and 9708 merchandise items were dispatched from Nepal. The total number of EMS document and merchandise items handled (dispatch and received) is 43525 in 2006 and 62841 in 2007.

The following table presents the year wise revenue collected from International EMS in different 5 years

Table – 9

Year	Revenue Collection (Rs.)
2003	16,840,980
2004	21,817,890
2005	24,275,049
2006	24,195,400
2007	24,691,400

The revenue earned through the booking of EMS items in Nepal showed a steady growth till 2003. However, it could not stabilize between 2005 and 2006. But now a slight increase of 2.04 percent revenue is recorded in 2007 compared to the figure of 2006.

SAME DAY DELIVERY SERVICE

GPO Kathmandu provides Same Day Delivery service of letter mail items for Kathmandu Metropolitan City. This service has been offered since the past four years. Items booked before 2 PM are delivered the same day.

LETTER BOX

As an additional facility, Letter boxes are provided for the postal users for posting letters at their convenient locations. The clearance time of mail from the letterbox, vary from place to place. The mails are generally cleared from the letterboxes at least once a day in major parts of the country.

As of 31 December 2007, the numbers of Letter Boxes in Nepal are **4,911**.

Table – 10

Total No. of letter box

Year	No. of Letter Box
2007	4,911

POST BOX SERVICE

Post Box is a facility provided for the reliable, secured and expeditious collection of postal items from the post office by Post Box holders. Postal users can subscribe Post Boxes from any of the post offices in Nepal that provide this facility. Post Boxes are rented out to the postal users against the payment of a fix deposit and annual charges, as provided below:

- | | |
|------------------------------------|-----------------|
| 1. Deposit amount | Rs. 1000 |
| 2. Annual Charge (Renewal): | |
| • Small Size Post Box | Rs. 500 |
| • Medium Size Post Box | Rs. 750 |
| • Big Size Post Box | Rs. 1200 |

As of 31st December 2006, a total of 17832 Post Boxes have been rented out to the postal users, where as 18,137 postal users have been using this service in 2007.

GPO makes available largest number of Post Boxes in the country. The GPO Kathmandu rented out a total number of 16,904 post boxes in 2007. Major users of the post boxes are public, business enterprises, non-government organization and International Organizations.

YEAR-WISE DISTRIBUTION OF POST BOXES

Table - 11

Total Number of post boxes		
Year	Available	Rented Out
2004	19,430	18,291
2005	23,914	20,241
2006	21,525	17,832
2007	21,942	18,137

POSTAL FINANCIAL SERVICES

Nepal Post offers Postal Saving Banking Service and Money Order Service as its financial services.

Region wise breakdown of Post Offices engaged in Postal Financial Services.

Table - 12

Development Region	2005		2006	
	No. of POs providing MOS	No. of POs providing PSBS	No. of POs providing MOS	No. of POs providing PSBS
Eastern	114	24	114	24
Mid	120	28	120	28
Western	120	23	120	23
Mid-western	84	24	84	24
Far-western	82	18	82	18
Total	520	117	521	117

Note:

- POs = Post Offices
- MOS = Money Order Services
- PSBS = Postal Saving Banking Service

POSTAL SAVING BANKING SERVICE

Postal Saving Banking Service was introduced in 1975. Currently, it is available at 117 Post Offices. These are: Kathmandu General Post Office, 4 Regional Directorates (except the Mid-Region Directorate), 70 District Post Offices and 42 Area Post Offices

Postal Saving Bank offers 3 types of saving accounts: **Personal, Joint and Minor**. An annual interest rate of 4 % is paid on the saving account. But, for the senior citizen aged 70 years or above the interest rate is 5 %.

As of 31 December 2007 there are 35,740 individual saving accounts operated at the above stated post offices and the total amount deposited in the accounts is Rs.779, 986, 790.

The saving deposit in the postal saving bank account in the year, 2007 rose steadily compare to the increase of 43.11% last year.

Postal Services Department has introduced new Postal Saving Bank Investment Scheme in 2003. As per the scheme, the postal savings are invested as loan to the postal employee payable in five years period at an annual interest rate of 9%. Postal Saving Bank of Nepal will extend and diversify its various lending schemes in the future.

Table - 13

S.N.	Levels of Post Offices	No of Post Offices providing Employees Investment Scheme	
		Saving Bank Service	Employees Investment Scheme
1	GPO, Kathmandu	1	1
2	Regional Postal Directorates	4	4
3	District Post Offices	70	48
4	Area Post Offices	42	1
	Total	117	54

Money Order Service

Money Order provides remittance service in a secured, faster and reliable manner. Therefore, the users of this service are growing every year.

Money Order Service in Nepal was introduced in 1975 under the Money Order Regulation, 1974. The service allows people to remit money from one part of the country to another as well as transfer money to other countries. Internationally, Nepal has Money Order Agreement, 1980 with India. In 2004 Nepal Post established Money Order Service with Jordan, Qatar, Hong Kong and Thailand. In 2005, Nepal Post signed Money Order Agreement with United Arab Emirates.

Currently, General Post Office in Kathmandu, 4 Regional Postal Directorates, 70 District Post Offices and 446 Area Post Offices provide Money Order Service.

An amount up to NRs. 10,000 in the interior of the country and Rs. 8000 (equivalent to 5000 Indian Currency) to India and amount equivalent to 2000 U S \$ can be sent to Jordan, Qatar, Thailand, Hong-Kong (China) in one money order. Government of Nepal has maintained a Revolving Fund of Rs. 13.5 millions for the smooth and prompt payment of Money Order. In 2007, 521 post offices were providing the money order service.

Money Order Transaction

A. Inland Money Order

Table – 14

Transaction of Inland Money Order

Year	Number of Money Order handled	Value of Money Orderhandled in NRs.
2004	5,381	14,538,679
2005	4,726	17,632,135
2006	5,632	24,058,618
2007	4,737	18,635,225

The post offices handled Money Orders of 4737 worth Rs. 18,635,225 in 2007.

B. Foreign Money Order:

Transaction of foreign Money Order

Table – 15

	2006	2007
	Total handled	Total handled
Total No. of Money order	3,800	3,530
Amount in Rs.	11,118,337	11,799,548

FINANCIAL REPORT

Nepal Post incurred an expenditure of Rs. 1001557000 in fiscal year 2063/2064 BS (July 16, 2006 - July, 15 2007). This is Rs. 40351078 (4.19%) more than the expenditure in 2006.

In fiscal year 2063/2064 BS, Nepal Post earned revenue of Rs. 244,321,664. The ratio between the revenue and expenditure in 2007 is near about 1:4. This show the gap between income and expenditure is increasing every year. Nepal Post needs to increase revenue by expanding the existing business services, creating new business services and exercising control over the expenditure. However, it is not an easy task as nearly 85.42% of the working expenses are spent on the payment of salary and allowances.

Table - 16

Details of Revenue in NRs:	2006	2007
Sales of Postage Stamp and Philatelic items	154,394,093	153,269,093
Franking Machine	10,457,203	9,322,185
Post Box	10,362,100	10,374,14
Foreign Parcel	8,804,768	13,113,770
EMS Services	25,952,078	28,378,467
International Mail Account	37,201,564	14,643,863
Money order	492,920	327,510
Miscellaneous	13,889,799	14,892,634
Total	261,554,525	244,321,664
Details of Expenditure in NRs:		
Salary and allowances	811,826,364	855,542,000
Airways bill	29,841,538	21,191,000
Miscellaneous	127,928,237	124,824,000
Total	961,205,922	1,001,557,000

Note :

The figures provided here under pertain to Nepalese Fiscal Year that commences on 16 July and terminates on 15 July every year.

HUMAN RESOURCE

Nepal Postal Services uses one of the largest numbers of government employees for its highly labor intensive work. It currently maintains 1 General Post Office, 4 Central Offices, 5 Regional Directorates, 70 District Post Offices, 842 Area Post Offices and 3,074 other Post Offices. In 2007; 9952 permanent staff and 10,777 part time workers have been working in Nepal Postal Services. The total number of employee is 20,729, and among them 10% are Female and 90% are male.

Number of Employees of Nepal Postal Services

(Regional Office, Other Central Offices, District Post Offices and Area Post Offices)

Table - 17

S.N.	Designation	Number of Post	Fulfill Post	Vacant Post	Remarks
1	Joint Secretary(Gazetted 1 st class)	2	2	x	
2	Under Secretary Gazetted 2 nd Class	18	11	7	
3	Section Officer Gazetted 3 rd Class	117	55	62	
4	Account Officer Gazetted 3 rd class	3	3	x	
5	Art Officer Gazetted 3 rd class	2	1	1	
6	Adm. Non Gazetted 1 st class	306	175	131	
7	Computer Operator Non Gazetted 1 st class	5	5	x	
8	Supervisor Non Gazetted 1 st class	1	1	x	
9	Accountant Non Gazetted 1 st class	23	9	14	
10	Typist	62	57	5	
11	Adm. Non Gazetted 2 nd class	1575	1205	370	
12	Asst. Accountant Non Gazetted 2 nd class	74	53	21	
13	Senior Technician Non Gazetted 2 nd class	4	4	x	
14	Adm. Non Gazetted 3 rd class	902	257	645	
15	Driver (class less)	20	9	11	
16	Halkara(class less)	2702	2423	279	
17	Hulaki (class less)	3748	2748	1000	
18	Peon (class less)	360	323	37	
	Total	9952	7341	2611	

PERSONNEL ENGAGED WITHIN THE ORGANIZATION:

The following table presents designation and office-wise break down of permanent staff strength in 2007

Table - 18

No	Offices	GTD 1st Class	GTD 2nd Class	GTD 3rd Class	NGTD 1st Class	NGTD 2nd Class	NGTD 3rd Class	Typist	Driver	Post Man	Mail Runner	Peon	Total
1	Postal Services Department	1	3	14	24	12	-	5	2	0	0	10	71
2	General Post Office	1	3	10	39	141	-	3	6	120	34	33	390
3	Central Office (4)	-	3	8	14	9	-	3	1	0	0	19	57
4	Regional Directorate (5)	-	5	16	39	33	41	9	5	56	262	19	485
5	'A' Class DPO (4)	-	4	4	16	16	32	4	3	56	123	8	250
6	'B' Class DPO (6)	-	-	6	24	24	48	6	2	80	193	12	395
7	'C' Class DPO (60)	-	-	60	158	202	291	60	1	396	3136	120	4424
8	'A' Class APO(4)	-	-	4	4	5	8	-	-	37	0	4	62
9	'B' Class APO(17)	-	-	-	17	17	34	-	-	70	0	17	155
10	'C' Class APO(190)	-	-	-	-	326	326	-	-	889	0	116	1657
11	'D' Class APO(616)	-	-	-	-	495	495	-	-	998	0	2	1990
	Total	2	18	122	335	1277	1278	90	20	2702	3748	360	9952

Training:

Domestic Training:

During the year 2006, Postal Training Centre conducted various categories of training courses for 146 postal employees. Similarly, different types of training were conducted by the Postal Training Center for 138 Postal employees in 2007.

The name of domestic training program
Conducted in 2007
the duration of training and numbers of trainee are
Provided below.

Table - 19

S.N.	Name of training	Participants level	Duration	Number of Program	Number of Participants
1	Supervision level	Non Gazetted	30 working days	1	18
2	Commercial service	Non Gazetted	30 working days	1	22
3	Money order and Postal saving Bank Operating	Different level	1 week	1	21
4	Counter and Public relation	Different level	1 week	1	18
5	Postman Motivating Mobile	Classless(Postman)	4 working days	2	47
6	Counter Automation	Different level	1 week	1	12

**International
Meetings Seminars, Workshops and Training Courses
attended by officers of Nepal Postal Services
in 2007**

Table - 20

S.No.	Name, Designation	Program	Duration	Venue
1.	Shreedhar Gautam Director General	1. First Global Postal and Information Technology Conference	14 -15 November 2007	Saudi Arabia
		2. QSF workshop & APPU Executive Council Meeting	20 November-1st December 2007	India
2.	Divakar Devkota Director	1. QSF Workshop & APPU Executive Council Meeting	20 November-1st December 2007	India
		2. First Global Postal and Information Technology Conference	14 -15 November 2007	Saudi Arabia
		3. IPDP Expert Training Workshop	22-27 Jan. 2007	Kenya
3.	Purushottam Poudel, Director, Regional Postal Directorate, Kathmandu	Seminar on Postal service Management	5-17 Feb 2007	Tokyo, Japan
4.	Anil Kumar Gurung Senior Postal Officer	Workshop on UPU Quality of Service	13-15 March 2007	Thailand
5.	Chiranjibi Timsina Section Officer GPO Kath	Regional Workshop on International Express Money	26-28 Feb 2007	India
6.	Keshab Prasad Ghimire Section Officer PSD Kathmandu.	QSF workshop & APPU Executive Council Meeting	20 Nov to 1st December. 2007	India
7.	Narayan Prasad Poudel, Section Officer, PSD Kathmandu.	International Postal Service	27 May-22 Jun 2007	Thailand
8.	Mohan Narshing Rana Art Officer, PSD Kathmandu	Observation visit of Security Printing	20-26 August 2007	France
9.	Eka Dev Adhakari Postal Officer, DPO Bhaktapur	Postal Management Course	9 July-14 September 2007	Thailand
10.	Subash Kumar Lamichane Section Officer , GPO Kathmandu	Basic Mail Theft Investigation and Dangerous goods training course.	6-9 August 2007	Thailand

INTERNATIONAL RELATIONS

Nepal became member of Universal Postal Union (UPU) in 1956. In 1982, Nepal was admitted to the Asian Pacific Postal Union (APPU) and became member of the Asia Pacific Post Cooperative in 2000. Nepal has been actively participating in the meetings of these organizations since becoming member.

Nepal Post has been receiving technical assistance from UPU and APPU in the form of consultancy mission, trainings and equipments. Nepal Post implemented UPU/ITU and Nepal Telecommunication Authority funded E-post project in Dhankuta DPO, Karve DPO and Mid-western Regional Postal Directorate, Surkhet in 2007. The project is phased out after its successful implementation.

Nepal Post entered into agreement with Western Union Money Transfer Company in 6th June 2007 for providing payment of money transferred through the Western Union Money Transfer.

Nepal attended the Executive Council Meeting of Asia Pacific Postal Union in New Delhi, India in 2007 by a three member delegation headed by the Director General of the Postal Services Department.

WORLD POST DAY

Nepal Post celebrated World Post Day on 9th October 2007 by organizing national level Letter writing Competition. Prizes were distributed to the winners of this event.

On the Occasion, Minister of Information and Communications, Director General of Postal Service Department and Director General of the Universal Postal Union delivered message. The messages were carried by the radio and television and the print media.

TECHNICAL ASSISTANCE

Nepal Post receives technical assistance from Universal Postal Union, Asia Pacific Postal Union and the few countries. The technical assistance mainly comprises fellowships, equipments and consultancy missions. The assistance has been instrumental for the development of human resources and improvement of the quality of the Postal Services of Nepal.

Nepal received fellowship for training courses under the UPU Technical Assistance Programme, and from the Asia-Pacific Postal Union in 2007. The details of the fellowships available are provided in the list under the table: 19 and 20.

E-POST

E- Post has been introduced in following three post offices:

- Dhankuta District Post Office
- Kavree District Post Office
- Mid- Region Postal Directorate

This service is introduced in 2007 with the financial assistance of UPU/ ITU /NTA. The counter of these post offices has been automated and Internet facility is also provided here.

PHILATELY

Subscribers account:

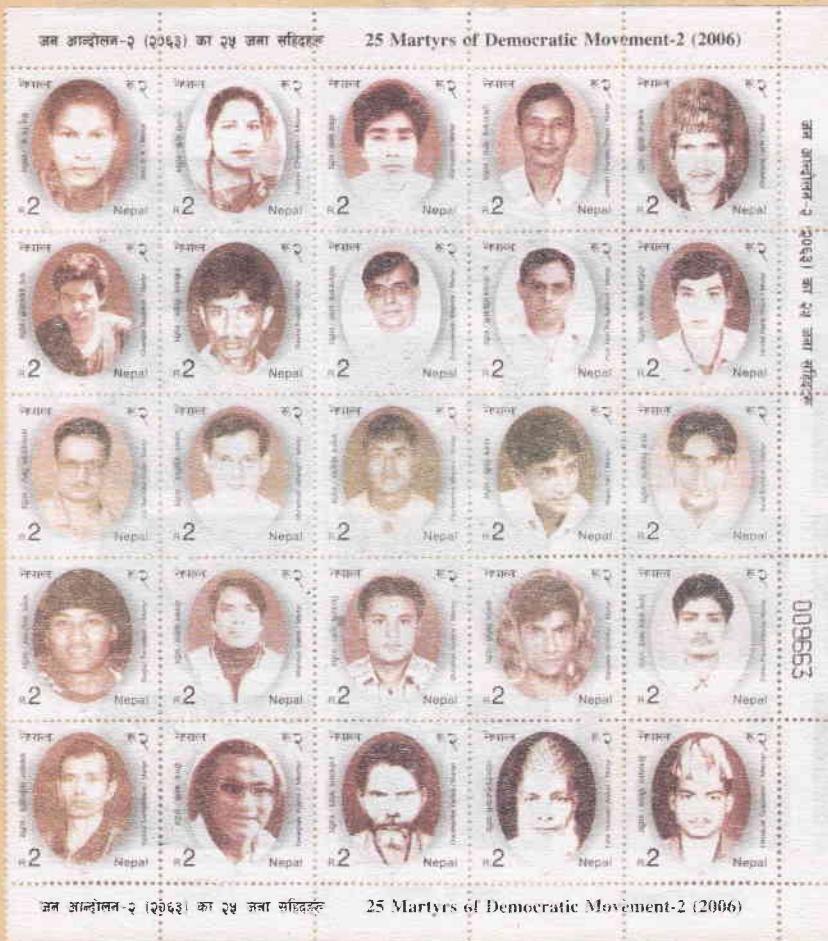
Standing Order Account is available at Nepal Philatelic Bureau for the Philatelists of Nepal and other countries. During the years 2006 and 2007, a total number of 277 Personal Deposit Accounts are active in this office. The Bureau has been selling philatelic item to the subscribers account holder with the amount deposited in the Account.

Issue of postage stamp:

In the year 2007, Postal Services Department brought out different commemorative and regular postage stamps in single and series.

The following present the Title, Issue number and the First Day Issue of postage stamps in the year under review.

POSTAGE STAMPS ISSUED IN 2007:



Cont..



AGENCY FUNCTION

Tele-communication Services:

Postal Services Department has been providing Tele-communication service as an agency function since 1994/95. PCO, STD, ISD and Fax Services are available at 34 major post offices and Area Post Offices in urban and rural areas in 2007.

MISCELLANEOUS

Registered Newspapers and Periodicals:

Nepal Post provides mailing facilities for the newspaper to the publishers of newspapers and periodicals who are registered in the General Post Office, Kathmandu, five Regional Postal Directorates or 74 District Post Offices as per Postal Act 2019.

Mail Conveyance and Mail Routes:

Postal Services Department uses different mode of transport to carry mail in through out the country. Some places are accessible only by air while most parts can only be reached on foot. Some districts are linked by road only. Therefore, vehicular transportation is used for conveying the mail.

There are altogether 910 mail routes covering a distance of 20,496 Kilometers (one-way) all over the country. There are no changes in the mail route since 2006.

Table – 23

Distances covered by vehicle and foot runners:

Year	Number of Mail Routes	One-way Length of Mail Routes in Km.
2007	910	20496

Post Office Buildings:

While few Area Post Offices (APOs) have their own building, most of the District Post Offices are housed in their own building. Some Area Post Offices and most of the EDPOs are located in the space provided by Village Development Committees, private person or public offices, free of cost. A total number of 220 postal units have their own buildings.

Services on Electronic Diversity Visa Programme (EDVP)

In 2007, Nepal Post provided E-Post Service to its customers for applying in the USA Diversity Visa Program through Internet. The service was provided at Kathmandu GPO, Dhahran, Sunsary Parsa and Birgunj DPO. Customers have appreciated this service because it is provided at an affordable service charge.

Nepal: A short country profile

With an area of 147,181 sq.km and the population of 23million, Nepal is bounded by India from the south, east and west. It shares common boarder with China in the north. Geographically, the country is divided from east to west into three layers: Himalaya in the north, Mountains in the middle and plains areas in the south. Within the north-south span of 150 to 200 km, altitude ranges from near sea level to 8848 meter above it – the summit of Mt. Everest, the highest peak of the planet.

The process of development and modernization of Nepal started comparatively very late, only after the advent of democracy in 1951. 15 percent of the land is arable while 90 percent of the population lives in the rural areas. Agriculture is their main livelihood of the people. Despite planned development efforts for over the last 52 years, most parts of the country are still inaccessible by modern means of transport and communications. Majority of the population are illiterate and the per capita income is about 290 US dollars (2007).

Year	Population (Million)	Urban Population (Million)
2007	23	2.1

चिठी-पत्रमा ठेगाना लेख्दा सफासंग
पूरा ठेगाना र हुलाक संकेत नम्बर
अनिवार्य लेखौ ।



५ डिजिटको कोड नम्बर समेत
ठीकसंग लेखेमा चिठी छिटो
पुग्न सक्छ ।



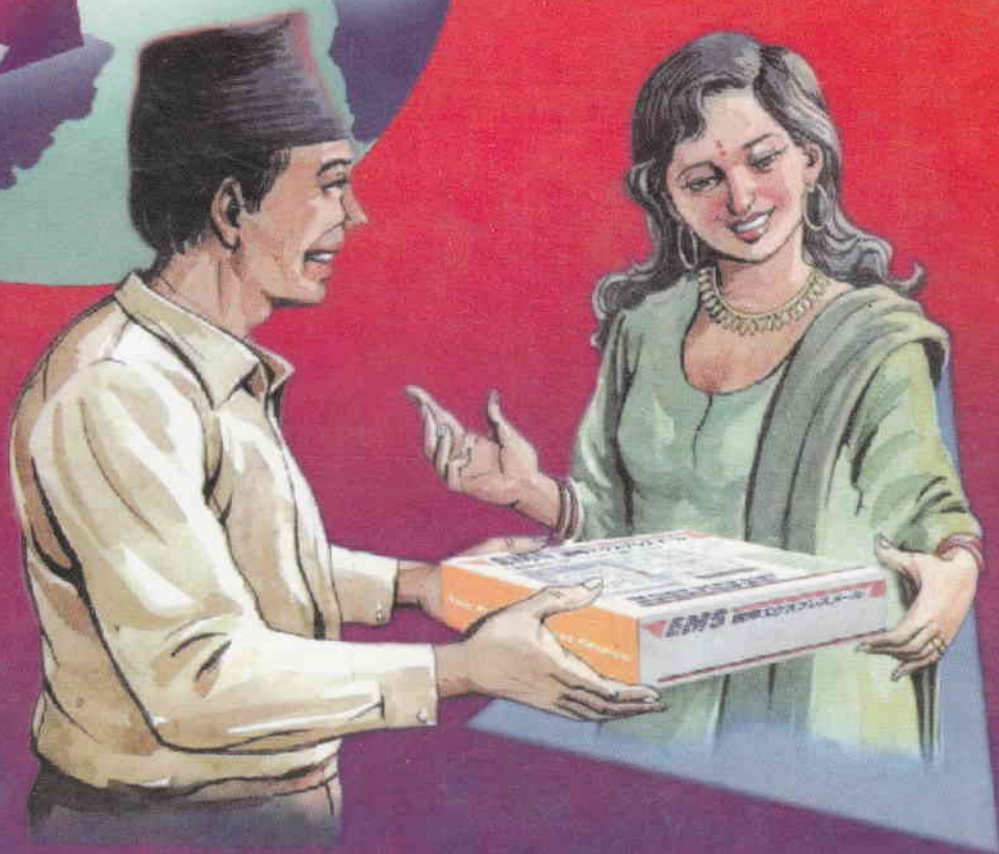
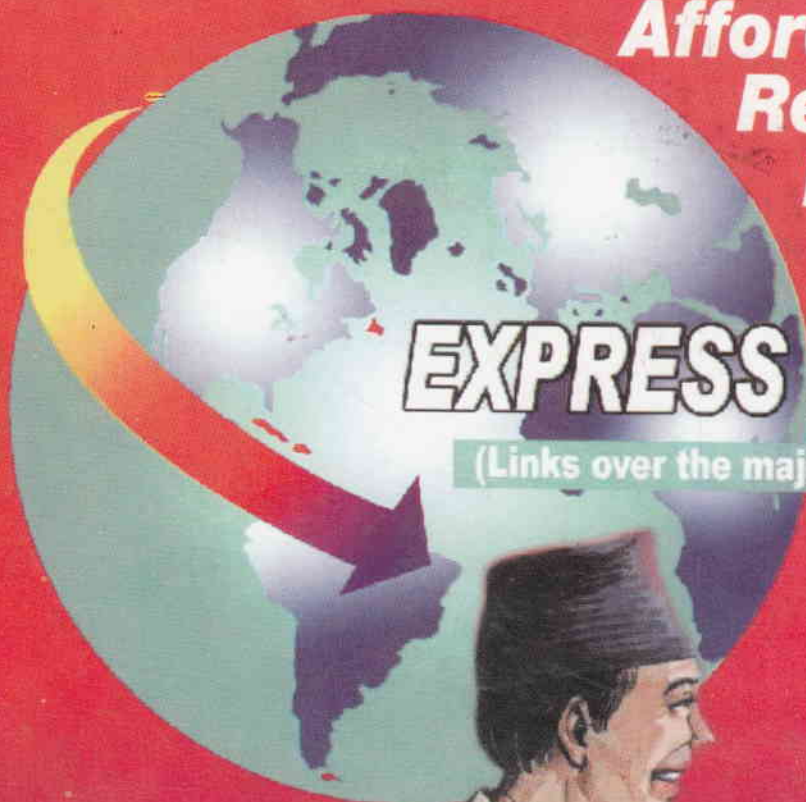
नेपाल सरकार
हुलाक सेवा विभाग
डिल्लीबजार, काठमाडौं ।

Nepal Post has been offering:

**Affordable
Reliable
Faster
Guaranteed**

EXPRESS MAIL SERVICE

(Links over the major destinations of the world)



THE WORLDWIDE POSTAL COURIER NETWORK



अन्तर्राष्ट्रिय द्रुत डाँक सेवा

For details, please contact:

Express Mail Service, General Post Office, Sundhara, Kathmandu, Nepal

Tel: 4258393, 4228218, Fax: 4225145, email: ems@gpo.wlink.com.np