



CITES LISTED PLANTS OF NEPAL



CITES (Convention on International Trade in Endangered Species of Wild Fauna and Flora) is an international agreement between Governments. Its aim is to ensure that international trade in specimens of wild animals and plants does not threaten the survival of the species. It was adopted in 3 March 1973 and entered into force in 1 July 1975. Nepal became its party on 18 June 1975 and entered into force on 16 September 1975. Currently there are 184 parties to this convention. Its secretariat is administered by UNEP and situated at Geneva, Switzerland. It plays a vital role for conserving our biodiversity especially of endangered species. The objectives of CITES is not only to ban the trade of wild animals and plants but it also works for facilitating the trade in a sustained way that does not affect wild population. In order to strengthen the CITES implementation and to conserve endangered animals and plants, Nepal has enacted an Act "Control of International Trade of Endangered Wild Fauna and Flora Act, 2017" and its regulation on 2019. Department of Plant Resources is working as the scientific authority and Department of Forests and Soil Conservation as the management authority for CITES listed plants in Nepal.

Appendix I	Restricted For Trade Worldwide; Authorized Only In Exceptional Circumstances Like Scientific Research
Appendix II	Regulated Trade; Export Permit Required
Appendix III	Regulated Trade From Nepal; Export Permit and Certificate of Origin Required

Appendix - I



Paphiopedilum spp.
 नेपाली नाम : सुनगाभा/सुनाखरी
 Family : Orchidaceae
 Habit : Herb
 Distribution : 1100-1600m., Eastern Nepal
 Trade Parts : Whole Plant



Dalbergia spp.
 नेपाली नाम : सिसौ/सतिसाल
 Family : Leguminosae
 Habit : Tree/Climbing shrub
 Distribution : 100-1400 m., East to West Nepal
 Trade Parts : Trunk, Wood
 Trade Name : Sissoo, Shisam, Rosewood



Nardostachys jatamansi (D. Don) DC.
 नेपाली नाम : जटामसी, भुल्ते
 Family : Caprifoliaceae
 Habit : Erect, perennial herb
 Distribution : 3200-5000 m., East to West Nepal
 Major Chemical Constituent : Valerone, Jatamansin
 Trade Parts : Roots and Rhizome in the form of Marc and Oil
 Trade Name : Bhulte, Jatamansi, Spikenard



Rauvolfia serpentina (L.) Benth. ex Kurz
 नेपाली नाम : सर्पगन्धा, चाँदमरुवा
 Family : Apocynaceae
 Habit : Shrub
 Distribution : 100-900 m., East to West Nepal
 Major Chemical Constituent : Reserpine, Serpentine
 Trade Parts : Roots
 Trade Name : Sarpagandha, Serpentine Roots, Indian Snake-root,



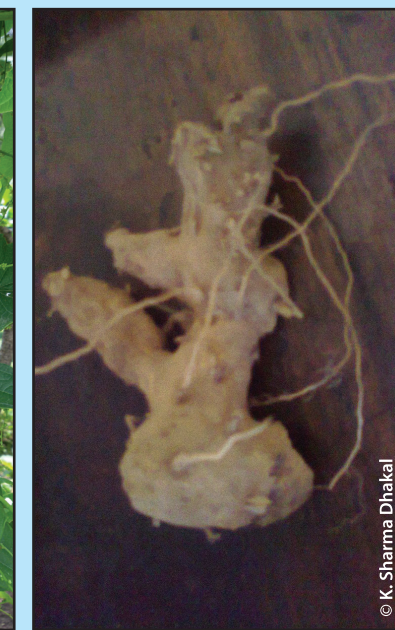
Appendix - II



Cyathea spp.
 नेपाली नाम : रुख उन्च, छत्रे
 Family : Cyatheaceae
 Habit : Tree
 Distribution : 300-2000 m., Central and East Nepal
 Trade Parts : Trunk/Stem/Leaves/Root fibre



Dioscorea deltoidea Wall. ex Griseb.
 नेपाली नाम : ककुर तरुल, भ्याकुर
 Family : Dioscoreaceae
 Habit : Herb/Climber
 Distribution : 450-3100m., East to West Nepal
 Major Chemical Constituent : Diosgenin
 Trade Parts : Tuber
 Trade Name : Elephant's Foot, Babrahkanda



Orchidaceae spp.
 नेपाली नाम : सुनगाभा/सुनाखरी/जीवन्ति
 Family : Orchidaceae
 Habit : Herb
 Distribution : 60-5200m., East to West Nepal
 Trade Parts : Whole plant, Tuber, Bulb
 Trade Name : Orchid, Sungava, Jiwanti, Saktigumba, Panchaunle, Gamdol, Rishabhak/Jeevak,



Taxus contorta Griff.
 नेपाली नाम : लौठसल्ला, सिन्गी
 Family : Taxaceae
 Habit : Evergreen tree
 Distribution : 2000-3400 m., Central and West Nepal
 Major Chemical Constituent : Taxol
 Trade Parts : Leaves
 Trade Name : Lothsalla



Cycadaceae spp.
 नेपाली नाम : कलवल, थाकल
 Family : Cycadaceae
 Habit : Small tree
 Distribution : 100-750 m., Central and East Nepal
 Trade Parts : Whole Plant (Live baby Plant), Bulb
 Trade Name : Cycas



Euphorbia spp. (Succulent only)
 नेपाली नाम : सिउँडी/कनिके घाँस/वनमूली
 Family : Euphorbiaceae
 Habit : Spiny shrub / Annual prostrate herb
 Distribution : 150-1500 m., East to West Nepal
 Trade Parts : Roots / Leaves



Podophyllum hexandrum Royle
 नेपाली नाम : लघुपत्र
 Family : Berberidaceae
 Habit : Herb
 Distribution : 3000-4500 m., East to West Nepal
 Major Chemical Constituent : Podophyllotoxin
 Trade Parts : Roots and Rhizome
 Trade Name : Bankakri, Laghupatra, Himalayan May Apple



Taxus wallichiana Zucc.
 नेपाली नाम : लौठसल्ला, बर्म सल्ला
 Family : Taxaceae
 Habit : Evergreen tree
 Distribution : 1800-3500 m., Central to East Nepal
 Major Chemical Constituent : Taxol
 Trade Parts : Leaves
 Trade Name : Lothsalla

Appendix - III



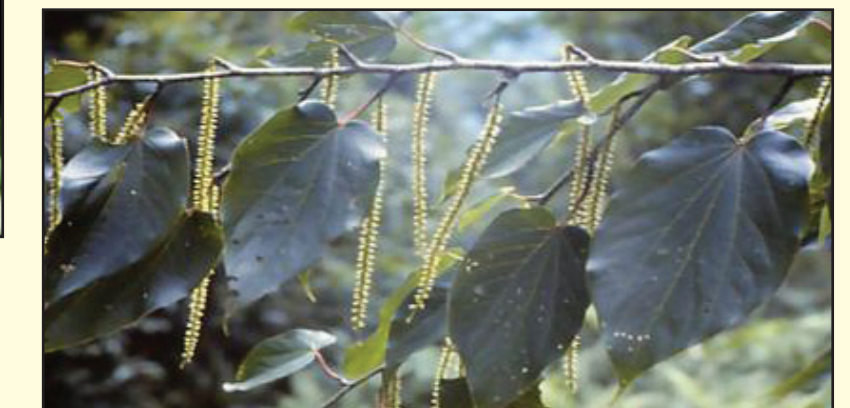
Gnetum montanum Markgr.
 नेपाली नाम : भोटेलहरा, पिन्ली
 Family : Gnetaceae
 Habit : Climbing Shrub
 Distribution : 200-1800 m., Central and East Nepal
 Major Chemical Constituent : Gnetumontanins
 Trade Parts : Seeds
 Trade Name : Gnetum, Umbli, Lolori, Malakanda, Mrigalindika



Podocarpus neriifolius D. Don.
 नेपाली नाम : गुल्सी
 Family : Podocarpaceae
 Habit : Evergreen tree
 Distribution : 800-1500 m., Central Nepal
 Major Chemical Constituent : Podocarpane
 Trade Parts : Wood
 Trade Name : Dieng-sia-blei, Halis, Jinart, Kat-bhaluk



Magnolia hodgsonii (Hook.f. & Thomson) H.Keng
 नेपाली नाम : भोटैचाँप, भालुकाठ
 Family : Magnoliaceae
 Habit : Tree
 Distribution : 900-1800 m., Central and East Nepal
 Major Chemical Constituent : Hodgsonialloside



Tetracentron sinense Oliv.
 नेपाली नाम : ऋरिकोटे, किम्बुक
 Family : Trochodendraceae
 Habit : Tree
 Distribution : 2300-3300 m., East Nepal
 Major Chemical Constituent : Syringanide, Catechin, β -sitosterol



Meconopsis regia G. Taylor.
 नेपाली नाम : क्यासर
 Family : Papaveraceae
 Habit : Herb
 Distribution : 3500-4600 m. Central Nepal

Government of Nepal
 Ministry of Forests and Environment
 Department of Plant Resources (DPR)
 Thapathali, Kathmandu, Nepal
 2022
 Website: www.dpr.gov.np, E-mail: info@dpr.gov.np