

BHARATPUR HOSPITAL
BHARATPUR, CHITWAN
NEPAL

PREPARATION OF MASTER PLAN AND DETAILED
TOPOGRAPHICAL SURVEY MAP OF BHARATPUR HOSPITAL
CHITWAN, NEPAL

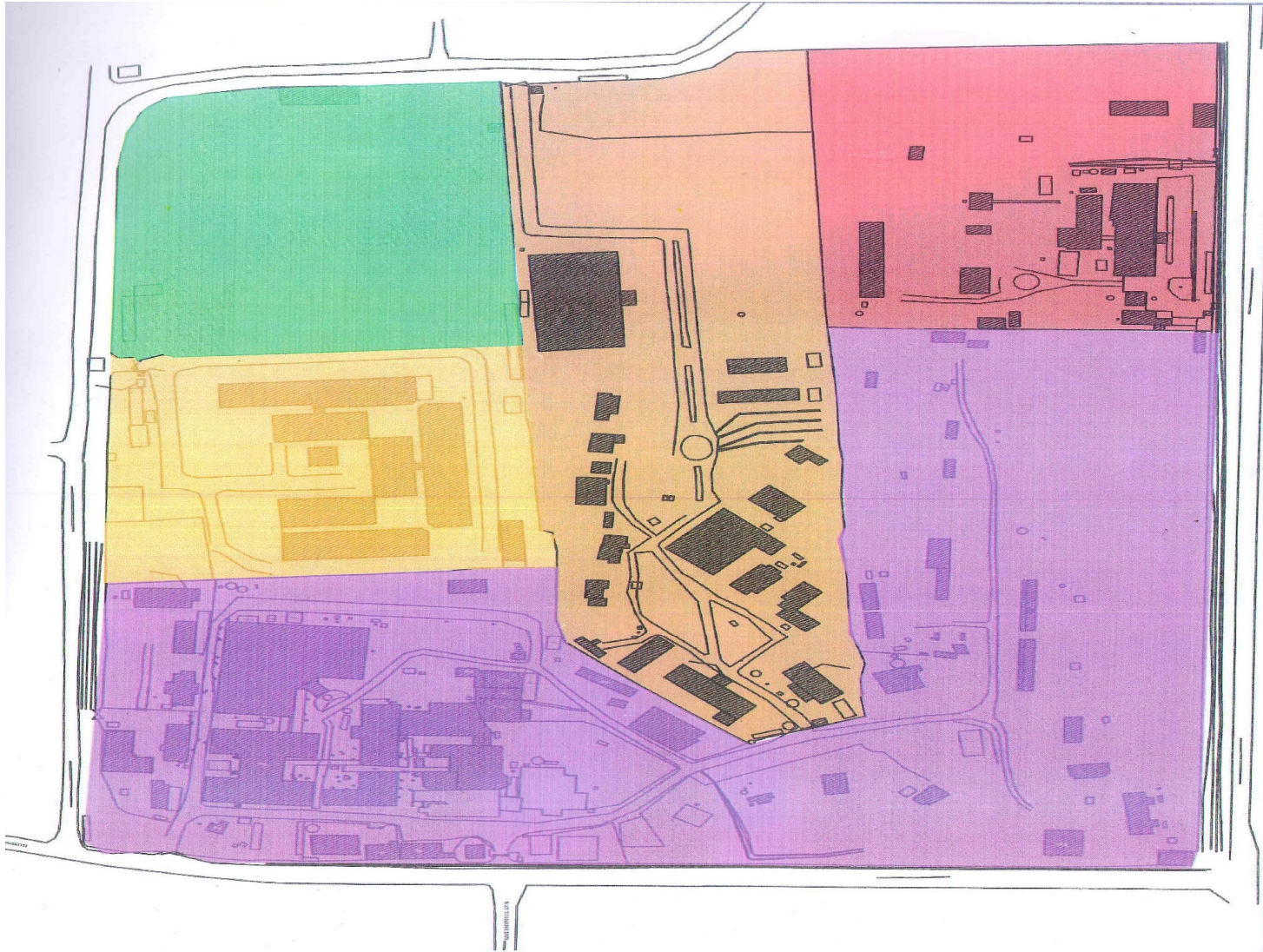


SUBMITTED BY:
A-NOT ARCHITECTURE AND ARCHITECTS
BAKHUMBAHAL, LALITPUR-II, NEPAL
DATE: 2074

Current Land Status :

Land Details	Land Area
Bharatpur Hospital	12-10-2-2
CMS, Hospital Building	3-7-15-1
CMS, Ground	3-9-0-0
CTEVT	6-11-0-0
Eye Hospital	3-16-18-0
Total Land Area	

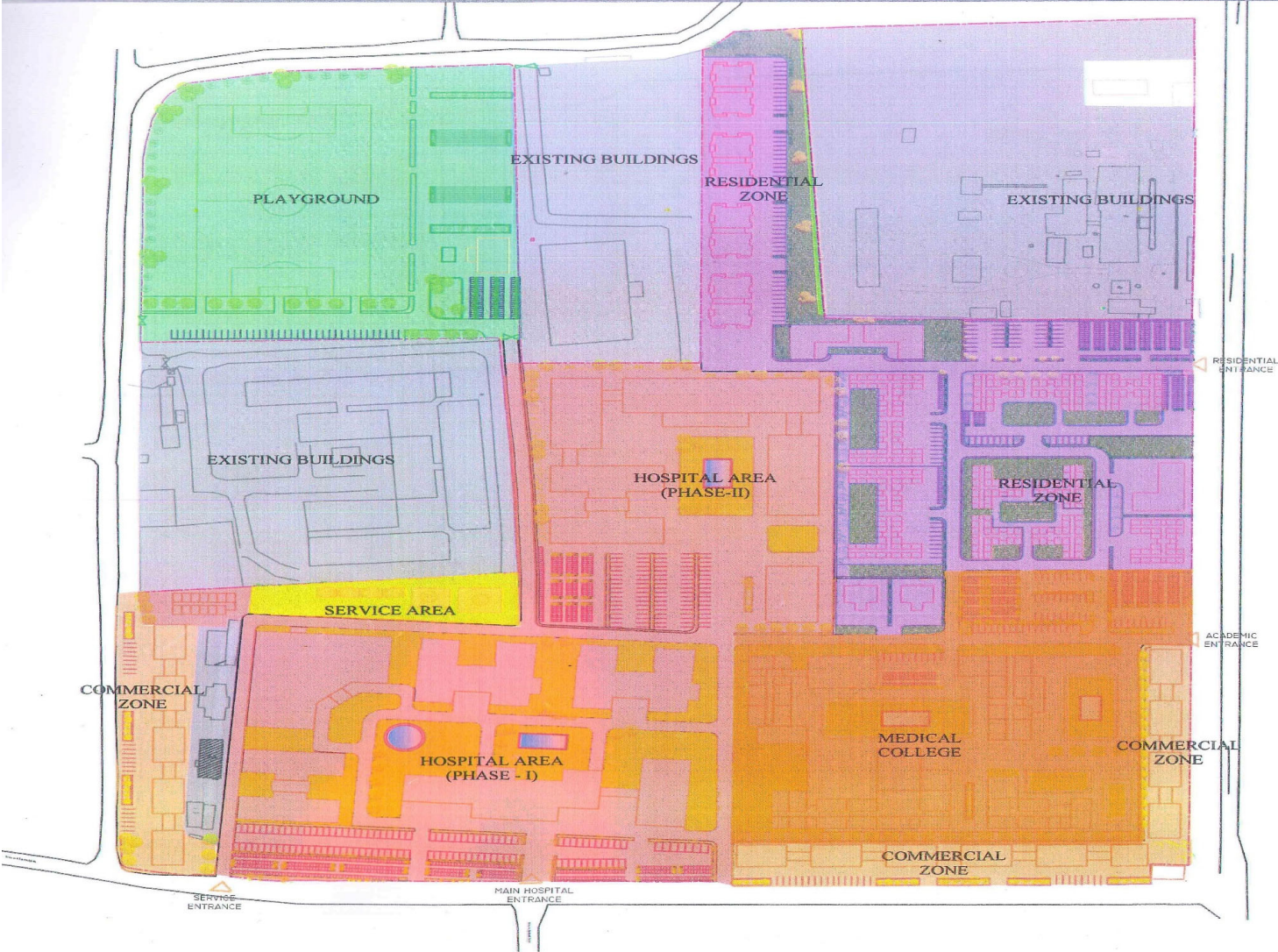
Current Land Use by different organization



Proposed Land Distribution:

Land Details	Land Area
Bharatpur Hospital	19-7-1-2.99
CMS, Hospital Building	3-0-16-2.32
CMS, Ground	3-9-0-0
CTEVT	1-17-10-0.46
Blood Bank	0-3-4-2.34
Eye Hospital	1-11-15-1.82

Proposed Land Distribution



Proposed Building for Hospital, College & Quarter



3D VIEWS



3D VIEWS- HOSPITAL BLOCKS



3D VIEWS- HOSTEL FACILITY



3D VIEWS- DOCTOR'S APARTMENT



Visitor's Guest House



Emergency Block Construction Progress

