

# NEPAL TOURISM STATISTICS 2025



**Government of Nepal**  
**Ministry of Culture, Tourism & Civil Aviation**  
Singhadurbar, Kathmandu, Nepal  
2026



# NEPAL TOURISM STATISTICS 2025



Government of Nepal  
**Ministry of Culture, Tourism & Civil Aviation**  
Singhadurbar, Kathmandu

2026

Published Date: April, 2026

Number of Copies: 250

Cover Photo: Mt. Everest (8848.86 m.)

**Chief Editor**

**Mrs. Indu Ghimire**

Joint Secretary

**Editor Team**

**Mr. Padam Raj Pandey**

Under-Secretary (Statistics)

**Gokarna Prasad Upadhyaya**

Under-Secretary

**Mr. Madan Prasad Pokhrel**

Statistical Officer

**Er. Bhuwan K.C.**

Computer Engineer

**Copyright** @ Ministry of Culture, Tourism & Civil Aviation

**Published by:**

Ministry of Culture, Tourism & Civil Aviation

Singhadurbar, Kathmandu

Tel:4211846, 4211685 Ext. 416

Fax: 4211758, 4211672

Email: [info@tourism.gov.np](mailto:info@tourism.gov.np)

Website: [www.tourism.gov.np](http://www.tourism.gov.np)



Government of Nepal  
**Ministry of Culture, Tourism and Civil Aviation**  
Singhadurbar, Kathmandu, Nepal



Ref : No:

Tel: +977-1-4211879 (Office)

Fax : +977-1-4211992

Email: [info@tourism.gov.np](mailto:info@tourism.gov.np)

Website: [www.tourism.gov.np](http://www.tourism.gov.np)

## Foreword

Tourism plays an important role in Nepal's economy by creating jobs and supporting economic growth. As one of the country's key sectors, it is important to promote tourism in a sustainable way while protecting our unique culture, heritage and natural environment.

I am happy to present *Nepal Tourism Statistics 2025*, which shows the progress of Nepal's tourism sector over the past year. In 2025, Nepal welcomed 1,162,365 visitors from around the world, reflecting a strong recovery and increasing interest in Nepal as a travel destination.

While this progress is encouraging, there is still work to be done. Our focus remains on making tourism more sustainable, improving infrastructure, protecting our heritage, and ensuring the safety and comfort of visitors.

This report is based on data collected from several key institutions, including the Department of Immigration, Department of Tourism, Nepal Rastra Bank, Nepal Tourism Board, Department of National Parks and Wildlife Conservation, and Nepal Mountaineering Association. We are grateful for their support.

I hope this publication will be useful for policymakers, researchers, stakeholders, and anyone interested in tourism in Nepal.

Finally, I would like to thank all partner organizations and the Ministry's staff for their hard work in preparing this report.

**15 April, 2026**

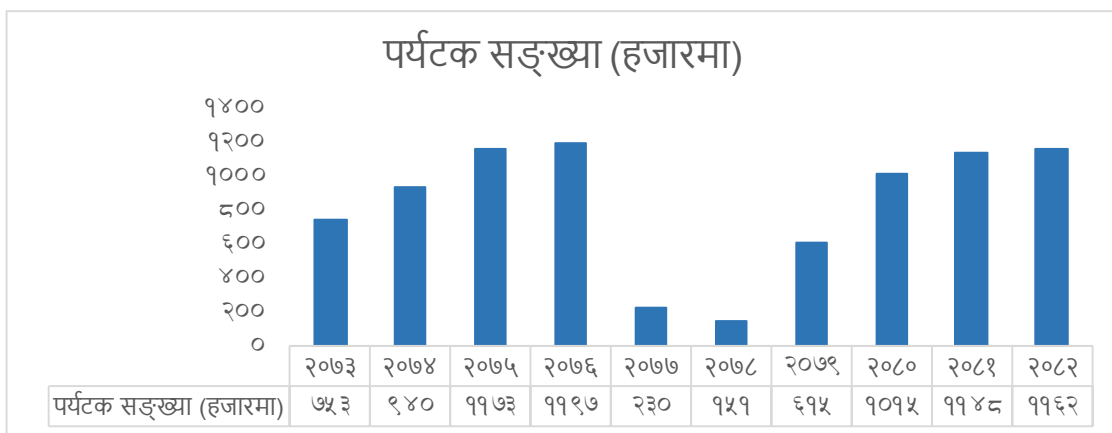
**Mukunda Prasad Niroula**  
Secretary



## पर्यटन तथ्याङ्क, २०२५ कार्यकारी सारंश

### पर्यटन:

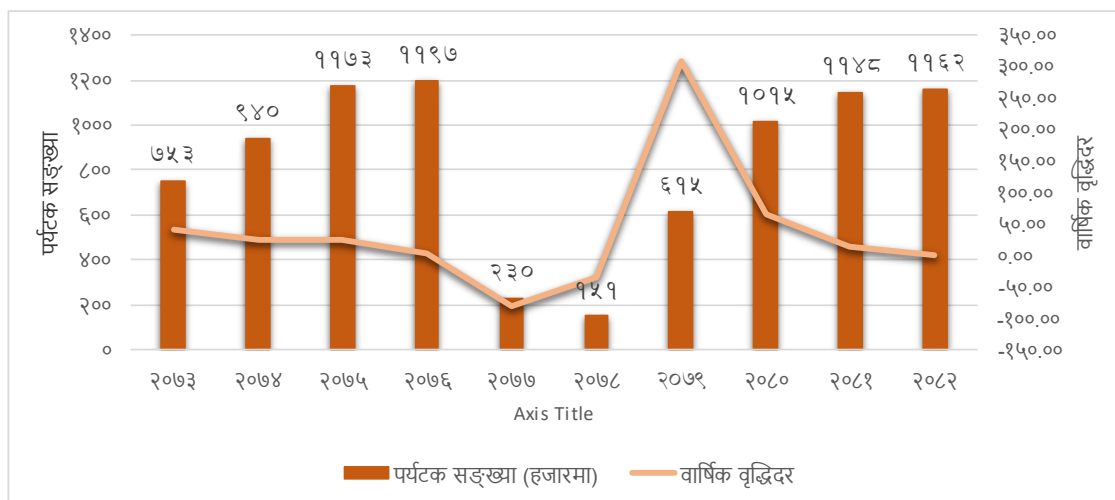
- अद्वितीय प्राकृतिक सौन्दर्य, बहुआयामिक सांस्कृतिक धरोहर र विविध पर्यटकीय उपजका कारण नेपाल विश्व पर्यटन बजारमा विशिष्ट पहिचान बनाएको गन्तव्य मुलुकका रूपमा स्थापित भएको छ। नयाँ गन्तव्यहरूको विकास तीव्र रूपमा अघि बढिरहेको छ। पूर्वाधार सुदृढीकरणअन्तर्गत गौतम बुद्ध अन्तर्राष्ट्रिय विमानस्थल र पोखरा अन्तर्राष्ट्रिय विमानस्थल सञ्चालनमा आएसँगै अन्तर्राष्ट्रिय पहुँच विस्तार भएको छ। सन् २०२३-२०३२ लाई पर्यटन दशकका रूपमा प्रभावकारी कार्यान्वयन गर्दै पर्यटन क्षेत्रलाई राष्ट्रिय अर्थतन्त्रको महत्वपूर्ण स्तम्भ बनाउने र प्रति पर्यटक प्रतिदिन औसत खर्च १२५ अमेरिकी डलर पुऱ्याउने लक्ष्य लिइएको छ।
- सन् २०१६-२०२५ को दशकमा ८३ लाख ८४ हजारभन्दा बढी पर्यटकले नेपाल भ्रमण गरेका छन्। यसले नेपालप्रतिको अन्तर्राष्ट्रिय आकर्षण र विश्वास अझै मजबुत रहेको पुष्टि गर्दछ। पछिल्लो दशकमा वार्षिक औसत पर्यटक आगमन करिब ८ लाख ३८ हजार ४ सय १९ जना पुगेको तथ्याङ्कले पर्यटन क्षेत्रको पुनरुत्थान र स्थायित्व दुवै पक्षमा सकारात्मक संकेत गर्दछ।



स्रोत: संस्कृति, पर्यटन तथा नागरिक उड्डयन मन्त्रालय, २०८२

- सम्बत् २०८१ को पौष मसान्तसम्म कुल ११ लाख ४७ हजार ५ सय ४८ जना पर्यटक नेपाल आएका थिए भने सम्बत् २०८२ को सोही अवधिसम्म यो सङ्ख्या १.२९ प्रतिशतले वृद्धि भई ११ लाख ६२ हजार ३ सय ६५ जना पुगेको छ। समग्र रूपमा पर्यटक आगमनमा वृद्धि देखिए पनि वृद्धि दर अपेक्षाकृत उच्च हुन सकेको छैन। विशेषगरी सम्बत् २०८२ भाद्र २३ र २४ गतेका दिनमा घटित जेन्जी आन्दोलनसँग सम्बन्धित घटनाहरूका कारण केही समयका लागि पर्यटन गतिविधिमा असर परेको अनुमान गर्न सकिन्छ। उक्त घटनापछि अन्तर्राष्ट्रिय सञ्चार माध्यम र यात्रु मनोविज्ञानमा परेको प्रभावका कारण अघिल्लो वर्षको तुलनामा पर्यटन आगमनको वृद्धिदरमा केही कमी देखिएको प्रतीत हुन्छ। (द्रष्टव्य: स्थलमार्गबाट आउने भारतीय पर्यटकमध्ये सीमा अध्यागमन कार्यालयमा अभिलेख गरिएको पर्यटकको संख्या मात्र समेटिएको हो, जुन ८,४७९ जना रहेको छ। स्थलमार्गबाट आवतजावत गर्ने भारतीय पर्यटकहरूको पूर्ण अभिलेख भने राख्ने गरिएको पाइँदैन)

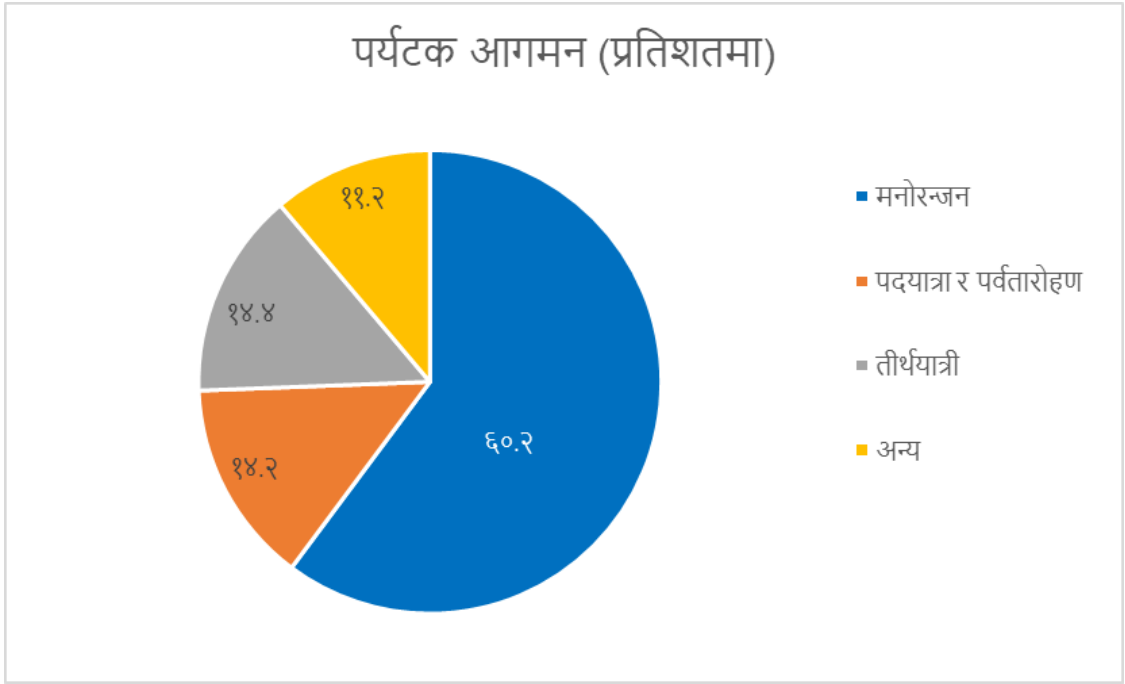
चित्र २ : पर्यटक आगमन र वार्षिक वृद्धिदर



स्रोत: संस्कृति, पर्यटन तथा नागरिक उड्डयन मन्त्रालय, २०८२

४. सन् २०२५ मा विभिन्न प्रयोजनका लागि नेपाल आएका विदेशी पर्यटकबाट प्राप्त कुल भ्रमण आय उल्लेखनीय रूपमा वृद्धि भएको छ। अधिल्लो वर्ष सन् २०२४ मा रु. ८३ अर्ब ३९ करोड ४० लाख रहेको आय सन् २०२५ मा ४.७७ प्रतिशतले बढेर रु. ८७ अर्ब ३७ करोड १६ लाख पुगेको छ। यस वृद्धिले पर्यटक आगमनसँगै उनीहरूको खर्च क्षमतामा समेत सुधार आएको संकेत गर्दछ। परिणामस्वरूप पर्यटन क्षेत्रले राष्ट्रिय अर्थतन्त्रमा थप सशक्त योगदान दिन थालेको देखिन्छ।
५. सन् २०२५ मा नेपाल भ्रमण गर्ने पर्यटकहरूको बसाइ अवधिमा सकारात्मक परिवर्तन देखिएको छ। सन् २०२४ मा औसत बसाइ १३.३ दिन रहेकोमा सन् २०२५ मा यो वृद्धि भई १६.३४ दिन पुगेको छ, जसले पर्यटकहरू नेपालमा लामो समय बिताउन थालेको प्रवृत्तिलाई संकेत गर्दछ। यद्यपि, बसाइ अवधि बढे पनि प्रति पर्यटक दैनिक खर्चमा भने गिरावट आएको देखिन्छ। सन् २०२४ मा प्रति दिन औसत खर्च ४०.८४ अमेरिकी डलर रहेकोमा सन् २०२५ मा घटेर ३३.०८ अमेरिकी डलरमा सीमित भएको छ। यस अवस्थाले पर्यटकको बसाइ अवधि र समग्र आकर्षणमा सुधार भए पनि दैनिक खर्चको स्तरमा अपेक्षित वृद्धि हासिल हुन नसकेको यथार्थलाई प्रस्ट पार्दछ।
६. सन् २०२५ मा नेपाल आएका पर्यटकहरूको प्रमुख उद्देश्य बिदा र मनोरञ्जन नै रहेको देखिन्छ, किनकि कुल आगन्तुकमध्ये ६०.२ प्रतिशतले घुमफिर तथा अवलोकन यात्राका लागि नेपाल रोजेका थिए। त्यसपछि तीर्थयात्रा गर्नेहरूको हिस्सा १४.४ प्रतिशत रहेको छ, जसले नेपालको धार्मिक तथा आध्यात्मिक महत्वलाई दर्शाउँछ। साहसिक गतिविधि र पर्वतारोहणका लागि १४.२ प्रतिशत पर्यटक आएका थिए, जसले हिमाली पर्यटनको आकर्षण कायम रहेको संकेत गर्छ। बाँकी ११.२ प्रतिशत पर्यटक भने व्यापार, अध्ययन, भ्रमण वा अन्य विविध प्रयोजनले नेपाल आएका थिए, जसले पर्यटन गतिविधि विभिन्न क्षेत्रसँग जोडिँदै गएको देखाउँछ।

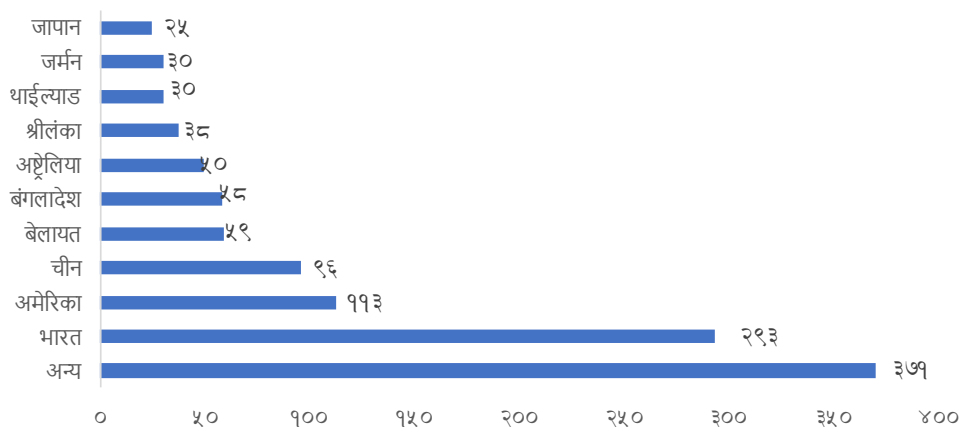
चित्र ३ : उद्देश्य अनुसार पर्यटक आगमन प्रतिशत



७. शान्तिका अग्रदूत गौतम बुद्धको जन्मस्थल लुम्बिनी मुलुककै प्रमुख धार्मिक तथा सांस्कृतिक पर्यटन गन्तव्यका रूपमा स्थापित भएको छ । सन् २०२५ मा लुम्बिनी भ्रमण गर्ने कुल पर्यटकको सङ्ख्या ११ लाख १३ हजार ६ सय ९६ पुगेको छ । यसमध्ये नेपाली पर्यटक ७ लाख २ हजार ९ सय १०, भारतीय पर्यटक ३ लाख ६९ हजार ८ सय १७ तथा अन्य मुलुकका पर्यटक १ लाख ४० हजार ९ सय ६९ रहेका छन् । सम्वत् २०८२ भाद्र २३ र २४ गते नेपालमा घटित घटनाको प्रभावका कारण सन् २०२४ को तुलनामा सन् २०२५ मा लुम्बिनी भ्रमण गर्ने नेपाली तथा भारतीय पर्यटकको सङ्ख्यामा क्रमशः ५७ हजार ८० र ३१ हजार ७२ ले कमी आएको देखिन्छ । तथापि, अन्य मुलुकबाट आउने पर्यटकको सङ्ख्यामा भने उल्लेखनीय वृद्धि भई २९ हजार ५ सय ४४ जनाले बढोत्तरी भएको छ । यी तथ्यहरूले लुम्बिनीप्रति अन्तर्राष्ट्रिय पर्यटकको आकर्षण निरन्तर रूपमा बढ्दै गएको र यसको विश्वव्यापी महत्त्व अझ सुदृढ हुँदै गएको स्पष्ट संकेत गर्दछ ।
८. सन् २०२५ मा आएका पर्यटकमध्ये भारतबाट करिब २ लाख ९३ हजार, अमेरिकाबाट १ लाख १३ हजार, चीनबाट ९६ हजार, बेलायतबाट ५९ हजार, बङ्गलादेशबाट ५८ हजार, अष्ट्रेलियाबाट ५० हजार, श्रीलङ्काबाट ३८ हजार, थाइल्याण्डबाट ३० हजार, जर्मनबाट ३० हजार, जापानबाट २५ हजार र अन्य मुलुकबाट ३ लाख ७१ हजार रहेका छन् ।

### चित्र ४: सन् २०२५ मा देशगत रूपमा पर्यटक आगमन (सङ्ख्या हजारमा)

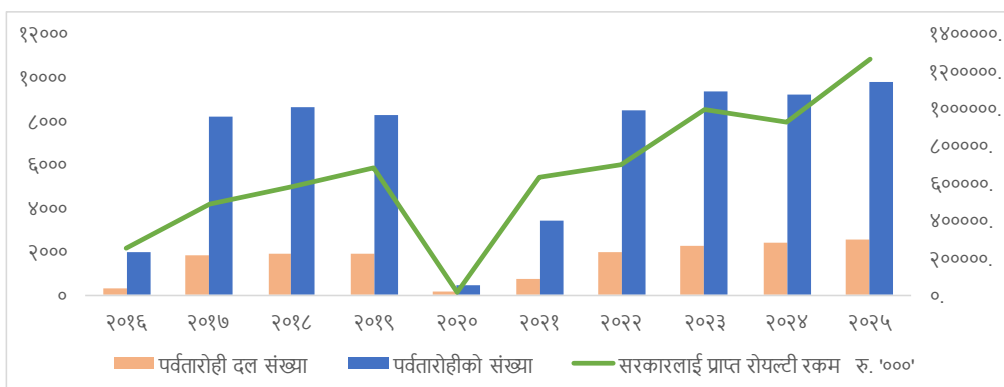
पर्यटन सङ्ख्या (हजारमा)



स्रोत: संस्कृति पर्यटन तथा नागरिक उड्डयन मन्त्रालय, २०८२

- सन् २०२५ मा पर्वतारोहण गतिविधिमा उल्लेखनीय विस्तार भएको देखिएको छ। सो वर्ष हिमाल आरोहण गर्ने दल (पर्वतारोहण दल) को सङ्ख्या अघिल्लो वर्षको तुलनामा ९.०५ प्रतिशतले वृद्धि भई २,५९० पुगेको छ। दलहरूको सङ्ख्या उल्लेख्य रूपमा बढे पनि पर्वतारोही व्यक्तिको सङ्ख्यामा भने तुलनात्मक रूपमा कम वृद्धि भएको देखिन्छ। सन् २०२४ मा ९,१९१ जना पर्वतारोही रहेकोमा सन् २०२५ मा यो सङ्ख्या ६.८४ प्रतिशतले बढेर ९,८२० पुगेको छ।
- पर्वतारोहण गतिविधि विस्तारसँगै सरकारलाई प्राप्त हुने रोयल्टी आमदानीमा पनि वृद्धि भएको छ। सन् २०२४ मा पर्वतारोहणबाट रु. ९२ करोड ५८ लाख रोयल्टी प्राप्त भएकोमा सन् २०२५ मा यो रकम बढेर रु. १ अर्ब २६ करोड २६ लाख पुगेको छ। यसले नेपालका हिमालहरूमा अन्तर्राष्ट्रिय पर्वतारोहीहरूको आकर्षण निरन्तर कायम रहेको र पर्वतारोहण क्षेत्रबाट राजस्व सङ्कलनमा सकारात्मक योगदान पुगेको संकेत गर्दछ।

### चित्र ५: विगत एक दशकको पर्वतारोही दल सङ्ख्या, पर्वतारोहीको सङ्ख्या र प्राप्त रोयल्टीको अवस्था



११. नेपालमा पर्यटन क्षेत्रको लागि आवश्यक दक्ष जनशक्ति उत्पादन गर्ने कार्यमा विभिन्न प्रतिष्ठानहरूको महत्वपूर्ण भूमिका रहँदै आएको छ । यस सन्दर्भमा, नेपाल पर्यटन तथा होटल व्यवस्थापन प्रतिष्ठानले सन् २०२५ मा मात्र ३,१०० जना व्यक्तिलाई पर्यटनसँग सम्बन्धित विभिन्न विधामा तालिम प्रदान गरी दक्ष जनशक्ति उत्पादन गरेको छ । यससँगै, स्थापना कालदेखि हालसम्म उक्त प्रतिष्ठानबाट कुल ३१,३३३ जना दक्ष जनशक्ति उत्पादन भइसकेका छन्, जसले देशको पर्यटन तथा आतिथ्य क्षेत्रको विकासमा ठोस योगदान पुऱ्याइरहेका छन् । त्यसैगरी, नेपाल पर्वतीय पर्यटन प्रतिष्ठानले पनि पर्वतीय तथा साहसिक पर्यटनसँग सम्बन्धित सीप विकासमा उल्लेखनीय कार्य गर्दै आएको छ । सन् २०२५ मा मात्र १,१५२ जनाले यस प्रतिष्ठानबाट विभिन्न विधामा तालिम प्राप्त गरेका छन् भने हालसम्म कुल ८,४७३ जनाले तालिम लिई दक्षता हासिल गरिसकेका छन् । यी तथ्याङ्कहरूले नेपालमा पर्यटन क्षेत्रको लागि आवश्यक मानव स्रोत विकास क्रमशः सुदृढ हुँदै गएको स्पष्ट देखाउँछन्, जसले समग्र पर्यटन उद्योगको गुणस्तर अभिवृद्धि र दिगो विकासमा सहयोग पुऱ्याउने अपेक्षा गरिएको छ ।
१२. नेपालको पर्यटन पूर्वाधार विस्तार हुँदै गएको सन्दर्भमा आवास सुविधाको सङ्ख्यात्मक वृद्धि पनि क्रमशः देखिन थालेको छ । डिलक्स श्रेणीसहितका तारे होटलहरूको सङ्ख्या २०८१ फागुनसम्म २१४ रहेकोमा एक वर्षभित्रै वृद्धि भई २०८२ फागुनसम्म २२२ पुगेको छ । यसले उच्चस्तरीय सेवा तथा सुविधा प्रदान गर्ने आवास संरचनामा लगानी र विस्तार भइरहेको संकेत गर्दछ, जसले अन्तर्राष्ट्रियस्तरका पर्यटकलाई आकर्षित गर्न थप सहयोग पुऱ्याउने अपेक्षा गर्न सकिन्छ । यसैगरी, तारेस्तरमा वर्गीकृत नभएका तर पर्यटकस्तरीय सेवा प्रदान गर्ने डिलक्स/लक्जरी हेरिटेज बुटिक होटल, होटल, लज तथा रिसोर्टहरूको सङ्ख्या पनि वृद्धि भएको छ । २०८१ फागुनसम्म १,३६४ रहेको यस्तो प्रकारका आवास संरचनाहरू २०८२ फागुनसम्म बढेर १,३८३ पुगेका छन् । यस्ता आवासहरू विशेषगरी सांस्कृतिक, स्थानीय र अनुभवमूलक पर्यटनलाई प्रवर्द्धन गर्न महत्त्वपूर्ण मानिन्छन् । समग्रमा हेर्दा, यी तथ्याङ्कहरूले नेपालमा पर्यटन पूर्वाधारको विस्तारसँगै गुणस्तरीय आवास सेवाको दायरा पनि फराकिलो हुँदै गएको स्पष्ट संकेत गर्छ, जसले पर्यटन उद्योगको दिगो विकासमा सकारात्मक प्रभाव पार्ने देखिन्छ ।
१३. नेपालको पर्यटन क्षेत्रसँग सम्बन्धित आवास पूर्वाधारमा मात्र सङ्ख्यात्मक वृद्धि नभई क्षमता विस्तार पनि उल्लेखनीय रूपमा हुँदै गएको देखिन्छ । रिसोर्ट तथा डिलक्ससहितका तारे होटलहरूमा उपलब्ध शैयाको सङ्ख्या चालु आर्थिक वर्षको फागुनसम्म थप ८७६ ले वृद्धि भई हाल कुल २१,२१९ पुगेको छ । यसले उच्चस्तरीय आवास सेवाको क्षमता विस्तार भइरहेको र बढ्दो पर्यटक मागलाई सम्बोधन गर्न होटल उद्योग सक्रिय रूपमा अघि बढिरहेको संकेत गर्दछ । त्यसैगरी, तारेस्तरमा नपर्ने तर पर्यटकस्तरीय सेवा प्रदान गर्ने डिलक्स/लक्जरी हेरिटेज बुटिक होटल, लज तथा रिसोर्टहरूमा पनि शैयाको सङ्ख्या उल्लेखनीय रूपमा बढेको छ । चालु आर्थिक वर्षको फागुनसम्म यस वर्गमा ६१६ शैया थप भई कुल सङ्ख्या ४२,९१५ पुगेको छ । यस्ता आवास संरचनाहरू विशेषगरी विविध अनुभव, स्थानीय संस्कृति र मध्यमस्तरका पर्यटकलाई लक्षित सेवा प्रदान गर्ने भएकाले पर्यटनको पहुँच विस्तारमा महत्त्वपूर्ण भूमिका खेल्नरहेका छन् । समग्रमा, यी तथ्याङ्कहरूले नेपालको पर्यटन क्षेत्रले मात्र संरचना विस्तार नभई सेवा क्षमता अभिवृद्धितर्फ पनि समान रूपमा प्रगति गरिरहेको स्पष्ट पार्छ ।
१४. आर्थिक वर्ष २०८२ को फागुन मसान्तसम्म देशभर सञ्चालनमा रहेका क्यासिनोहरूको सङ्ख्यामा उल्लेखनीय वृद्धि भएको देखिन्छ । यस अवधिसम्म परम्परागत रूपमा सञ्चालन हुने क्यासिनो १० वटा र आधुनिक मेशिन तथा उपकरणमार्फत मात्र खेल सञ्चालन गर्ने क्यासिनो २६ वटा गरी कुल ३६ क्यासिनो सञ्चालनमा रहेका छन् । आर्थिक वर्ष २०८१ को असार मसान्तसम्म यस्तो क्यासिनोहरूको सङ्ख्या जम्मा २९ मात्रै रहेको थियो । यसबाट

पछिल्लो अवधिमा क्यासिनो उद्योग विस्तार हुँदै गएको र विशेषगरी प्रविधिमा आधारित आधुनिक क्यासिनोहरूको आकर्षण बढ्दै गएको संकेत गर्दछ, जसले पर्यटन क्षेत्रको विविधीकरण र राजस्व अभिवृद्धिमा समेत सकारात्मक प्रभाव पार्ने अपेक्षा गरिएको छ ।

१५. चालु आर्थिक वर्षको फागुन मसान्तसम्म देशभर सञ्चालनमा रहेका क्यासिनो तथा आधुनिक मेशिन वा उपकरणमार्फत मात्र खेल सञ्चालन गर्ने क्यासिनोहरूबाट उल्लेखनीय राजस्व सङ्कलन भएको छ । यस अवधिसम्म यस्ता क्यासिनोहरूबाट कुल रु. ४५ करोड ५ लाख बराबरको रोयल्टी राजस्व सङ्कलन गरिएको छ । सन् २०२४ को सोही अवधिमा रु.३३ करोड २१ लाख रोयल्टी सङ्कलन भएको थियो । यसले क्यासिनो क्षेत्रले सरकारी आम्दानीमा महत्वपूर्ण योगदान पुऱ्याइरहेको देखिन्छ । विशेषगरी आधुनिक प्रविधिमा आधारित क्यासिनोहरूको विस्तारसँगै राजस्व सङ्कलनमा पनि वृद्धि भएको संकेत गर्दछ, जसले पर्यटन उद्योग सुदृढीकरणका साथै राष्ट्रिय अर्थतन्त्रमा सकारात्मक प्रभाव पार्ने अपेक्षा गरिएको छ ।
१६. सम्वत् २०८२ सालको फागुन मसान्तसम्म पर्यटन क्षेत्रसँग सम्बन्धित विभिन्न सेवा प्रदायक संस्था तथा मानव संसाधनहरूको दर्ता सङ्ख्या उल्लेखनीय रूपमा वृद्धि भएको देखिन्छ । यस अवधिसम्म ट्राभल एजेन्सी ५,०९९, ट्रेकिङ एजेन्सी ३,३३२ र न्याफिटड एजेन्सी ९८ वटा दर्ता भई सञ्चालनको दायरामा आएका छन् । यससँगै पर्यटक सेवा प्रवाहमा संलग्न मानव संसाधनतर्फ पनि उल्लेखनीय विस्तार भएको छ, जसअन्तर्गत पर्यटक यातायात सेवा प्रदायक १६३, टुर गाईड ५,४६६, ट्रेकिङ गाईड २७,९६२ र रिभर गाईड ४३७ जना दर्ता भएका छन् । यी तथ्याङ्कहरूले नेपालको पर्यटन उद्योग क्रमशः विस्तार हुँदै गएको तथा सेवा प्रदायक संस्था र दक्ष जनशक्तिको उपलब्धता बढ्दै गएको संकेत गर्दछ । यसले पर्यटकहरूलाई विविध, सुरक्षित र गुणस्तरीय सेवा प्रदान गर्न सहयोग पुऱ्याउनुका साथै पर्यटन क्षेत्रको व्यावसायिकता र विश्वसनीयता अभिवृद्धिमा समेत महत्वपूर्ण भूमिका खेलेको छ ।

## हवाई

१७. सन् २०२५ सम्म आइपुग्दा नेपालको हवाई यातायात क्षेत्र उल्लेखनीय रूपमा विस्तार भएको देखिन्छ । यस अवधिसम्म अन्तर्राष्ट्रिय उडान सञ्चालन गर्ने वायुसेवा कम्पनीहरूको सङ्ख्या ३२ पुगेको छ, जसमा ५ नेपाली र २७ विदेशी वायुसेवा कम्पनीहरू समावेश छन् । यससँगै नेपालले विभिन्न देशहरूसँग गरेको द्विपक्षीय हवाई सेवा सम्झौताहरूको सङ्ख्या पनि बढेर ४२ पुगेको छ, जसले अन्तर्राष्ट्रिय हवाई सम्पर्क विस्तारमा महत्वपूर्ण भूमिका खेलेको छ । यस्तै, हवाई यातायातको क्षमता विस्तारतर्फ पनि प्रगति भएको छ, जहाँ वार्षिक दुईतर्फी हवाई सिट क्षमता करिब ९१ लाख ९१ हजार ७२८ पुगेको छ । आन्तरिक उडान सेवामा समेत वृद्धि हुँदै गएको छ, जसअन्तर्गत Fixed Wing र Rotor Wing सहित २० वायुसेवा कम्पनीहरू सञ्चालनमा रहेका छन् । पूर्वाधारतर्फ हेर्दा, देशभर सञ्चालनमा रहेका कुल विमानस्थलहरूको सङ्ख्या ३५ रहेको छ भने सबै मौसममा सञ्चालन गर्न सकिने कालोपत्रे विमानस्थलहरूको सङ्ख्या ४२ पुगेको छ । यी उपलब्धिहरूले नेपालको हवाई पूर्वाधार सुदृढ हुँदै गएको, आन्तरिक तथा अन्तर्राष्ट्रिय कनेक्टिभिटी विस्तार भएको र समग्र पर्यटन तथा आर्थिक गतिविधिमा सकारात्मक प्रभाव परेको संकेत गर्दछ ।
१८. सन् २०२५ मा अन्तर्राष्ट्रिय हवाई सेवातर्फ त्रिभुवन अन्तर्राष्ट्रिय विमानस्थलमार्फत् यात्रु आवागमन उल्लेखनीय रहेको देखिन्छ । यस अवधिमा कुल १७ हजार ३०० प्रस्थान उडानहरू सञ्चालन भई २६ लाख ७ हजार १८५ जना यात्रु विभिन्न गन्तव्यतर्फ प्रस्थान गरेका छन् । यसैगरी, समान सङ्ख्यामा अर्थात् १७ हजार ३०० आगमन

उडानमार्फत् २४ लाख ३७ हजार ८९२ जना यात्रु नेपाल भित्रिएका छन् । यी तथ्याङ्कहरूले त्रिभुवन अन्तर्राष्ट्रिय विमानस्थल नेपालको मुख्य अन्तर्राष्ट्रिय हवाई प्रवेशद्वारको रूपमा अझै सक्रिय रहेको देखाउँछ ।

१९. सन् २०२५ मा आन्तरिक हवाई सेवातर्फ त्रिभुवन अन्तर्राष्ट्रिय विमानस्थलको गतिविधि उल्लेखनीय रूपमा उच्च देखिएको छ । यस अवधिमा उक्त विमानस्थलबाट देशका विभिन्न गन्तव्यतर्फ कुल ५१ हजार ७८१ प्रस्थान उडान सञ्चालन भई २३ लाख ३२ हजार ४२४ जना यात्रु बाहिरिएका छन् । त्यसैगरी, देशका विभिन्न स्थानबाट काठमाडौँतर्फ हुने आवागमन पनि उक्तकै सक्रिय रहेको देखिन्छ । सोही अवधिमा ५१ हजार ७७५ आगमन उडानमार्फत् करिब २२ लाख ३७ हजार यात्रु काठमाडौँ भित्रिएका छन् । यी तथ्याङ्कहरूले आन्तरिक हवाई सेवा विस्तार हुँदै गएको, यात्रु आवागमनमा वृद्धि भएको तथा राजधानी काठमाडौँलाई केन्द्र बनाएर देशभित्रको हवाई सम्पर्क सुदृढ बन्दै गएको स्पष्ट संकेत गर्दछ ।
२०. आन्तरिक हवाई सेवाको सन्दर्भमा सन् २०२५ मा त्रिभुवन अन्तर्राष्ट्रिय विमानस्थल बाहेकका अन्य आन्तरिक विमानस्थलहरूबाट यात्रु आवागमन उल्लेखनीय मात्रामा भएको देखिन्छ । यस अवधिमा कुल ७५ हजार ५६२ प्रस्थान उडानमार्फत् करिब २४ लाख ६९ हजार २९२ जना यात्रु देशका विभिन्न गन्तव्यतर्फ प्रस्थान गरेका थिए । त्यसैगरी, आगमनतर्फ ७३ हजार ३४८ उडान सञ्चालन भई २४ लाख २ हजार २८० जना यात्रु विभिन्न आन्तरिक विमानस्थलहरूमा अवतरण गरेका थिए । यी तथ्याङ्कहरूले आन्तरिक हवाई यातायात सेवामा स्थिर र सक्रिय सञ्चालन रहेको तथा देशभित्रको आवागमनमा हवाई सेवाको उपयोग निरन्तर बढ्दै गएको संकेत गर्दछ, जसले क्षेत्रीय कनेक्टिभिटी सुदृढ गर्न महत्वपूर्ण योगदान पुऱ्याइरहेको छ ।

## संस्कृति

२१. वि.सं. २०६१ साल बैशाख देखि २०८२ साल फागुन मसान्तसम्म विभिन्न विधाका सिर्जनात्मक तथा बौद्धिक कृतिहरूको प्रतिलिपि अधिकार दर्तामा उल्लेखनीय प्रगति भएको देखिन्छ । यस अवधिमा कुल ३,२७८ वटा प्रतिलिपि अधिकारजन्य रचनाहरू दर्ता भएका छन्, जसमा सबैभन्दा बढी हिस्सा साहित्यतर्फको रहेको छ । साहित्यिक कृतिहरूको सङ्ख्या २,४०३ पुगेको छ भने म्यागजिन प्रकाशनतर्फ ४ र अनुवाद रचनातर्फ ५ कृति दर्ता भएका छन् । दृश्य तथा कलात्मक विधातर्फ पनि उल्लेखनीय सहभागिता देखिन्छ, जसअन्तर्गत आर्ट/पेन्टिङ १७७ र ध्वनी अङ्क (अडियो रेकर्डिङ) ३११ वटा दर्ता भएका छन् । यसैगरी, आर्किटेक्चरल नमुनातर्फ ४७ तथा काष्ठकला, धातुकला, मूर्तिकला र डिजिटल आर्टसम्बन्धी कृतिहरू ११९ वटा दर्ता भएका छन् । प्रविधिसँग सम्बन्धित क्षेत्रमा पनि सक्रियता देखिएको छ, जहाँ कम्प्युटर सफ्टवेयरतर्फ ८२ कृतिहरू दर्ता भएका छन् । साथै, प्रस्तुति रचनातर्फ १७, फोटोग्राफीतर्फ ५०, शोधपत्रतर्फ १६, चलचित्र तथा वृत्तचित्रतर्फ १७, र वैज्ञानिक लेख रचनातर्फ १८ कृतिहरू दर्ता भएका छन् । यसबाहेक नाटक, नाट्य सङ्गीत, मूकचित्र लगायतका १२ कृतिहरू समेत दर्ता भएका छन् । यी तथ्याङ्कहरूले नेपालमा बौद्धिक सम्पत्ति संरक्षणप्रति सचेतना क्रमशः बढ्दै गएको, सिर्जनात्मक क्षेत्रहरूमा विविधता विस्तार हुँदै गएको तथा लेखक, कलाकार र सर्जकहरू आफ्नो कृतिको अधिकार सुरक्षित गर्नतर्फ उन्मुख भइरहेको स्पष्ट संकेत गर्दछ ।
२२. विश्वभरिका बौद्ध तीर्थयात्री तथा पर्यटकलाई आकर्षित गर्ने उद्देश्यले वर्षभरि विभिन्न धार्मिक तथा सांस्कृतिक कार्यक्रमहरू सञ्चालन गरिएको छ । विशेषगरी, विभिन्न पवित्र स्थलहरूमा त्रिपिटक वाचन जस्ता धार्मिक क्रियाकलापहरू आयोजना गरिनुका साथै करिब ५०० जनालाई अल्पकालीन रूपमा श्रामणेर (प्रब्रज्या) दीक्षा प्रदान गर्ने कार्य सम्पन्न गरिएको छ । यसका अतिरिक्त, विभिन्न बौद्ध सम्प्रदायहरूको सक्रिय सहभागितामा

अन्तर्राष्ट्रियस्तरका मोन्लम (महाप्रार्थना) पूजा कार्यक्रमहरू पनि आयोजना गरिएका छन्, जसले धार्मिक पर्यटन प्रवर्द्धनका साथै नेपालको आध्यात्मिक पहिचानलाई विश्वस्तरमा थप उजागर गर्न महत्वपूर्ण योगदान पुऱ्याएको छ ।

२३. लुम्बिनी भ्रमणमा आउने स्वदेशी तथा विदेशी तीर्थयात्री र पर्यटकहरूको सहजता र जानकारीमूलक अनुभव सुनिश्चित गर्न कोषअन्तर्गत सञ्चालित सूचना केन्द्रले निरन्तर सेवा प्रवाह गरिरहेको छ । यस केन्द्रमार्फत लुम्बिनी क्षेत्रका प्रमुख धार्मिक, ऐतिहासिक तथा सांस्कृतिक स्थलहरूको परिचय, भ्रमण मार्ग, उपलब्ध सेवासुविधा, कार्यक्रम तथा गतिविधिहरू सम्बन्धी अद्यावधिक जानकारी नियमित रूपमा प्रदान गरिँदै आएको छ । साथै, पर्यटकहरूको आवश्यकता अनुसार मार्गदर्शन, सहजीकरण, सूचना सामग्री वितरण, आपतकालीन सहयोग लगायतका सेवाहरू पनि व्यवस्थित रूपमा उपलब्ध गराइँदै आएका छन् । यसले पर्यटकहरूको बसाइँलाई थप व्यवस्थित, सुरक्षित र सन्तोषजनक बनाउँदै समग्र धार्मिक पर्यटन अनुभवलाई सुदृढ गर्न महत्वपूर्ण योगदान पुऱ्याएको छ ।
२४. लुम्बिनी भ्रमणमा आउने स्वदेशी तथा विदेशी तीर्थयात्री तथा पर्यटकहरूको सुविधालाई मध्यनजर गर्दै अनलाइन टिकटिड प्रणालीको व्यवस्था गरिएको छ । यस प्रणालीमार्फत पर्यटकहरूले अग्रिम रूपमा नै टिकट खरिद गर्न सक्ने भएकाले लामो लाइनमा बस्नुपर्ने झन्झटबाट मुक्ति मिलेको छ । साथै, डिजिटल माध्यमबाट टिकट व्यवस्थापन गर्दा प्रवेश प्रक्रियालाई छिटो, सहज र पारदर्शी बनाइएको छ । यसले पर्यटकहरूको समयको बचत गर्नुका साथै समग्र सेवा प्रवाहलाई थप आधुनिक, व्यवस्थित र प्रभावकारी बनाउन महत्वपूर्ण भूमिका खेलेको छ ।
२५. संवत् २०७२ सालमा गएको विनाशकारी महाभूकम्पका कारण क्षतिग्रस्त भएका ऐतिहासिक, धार्मिक तथा सांस्कृतिक सम्पदाहरूको संरक्षण र पुनर्निर्माण कार्यलाई प्राथमिकताका साथ अघि बढाइँदै आएको छ । यसै क्रममा चालु आर्थिक वर्षको फागुन मसान्तसम्म थप ५ वटा सम्पदाको सफल पुनर्निर्माण सम्पन्न गरिएको छ । यससँगै हालसम्म कुल ८१५ सम्पदाहरूको संरक्षण, पुनर्स्थापना तथा पुनर्निर्माण कार्य सम्पन्न भइसकेको छ । यी प्रयासहरूले नेपालको मौलिक पहिचान, ऐतिहासिक धरोहर र सांस्कृतिक सम्पदाको जगेर्ना गर्दै तिनको दीर्घकालीन संरक्षणमा महत्वपूर्ण योगदान पुऱ्याएका छन्, साथै पर्यटन प्रवर्द्धनमा समेत सकारात्मक प्रभाव पारिरहेका छन् ।

## विविध

२६. सन् २०२५ मा नेपाल पर्यटन प्रहरीमा पर्यटकसँग सम्बन्धित कुल ५१५ वटा विभिन्न प्रकारका गुनासो दर्ता भएका थिए । तीमध्ये सबैभन्दा बढी ४५२ वटा कागजात वा सामग्री हराउने सम्बन्धी रहेका छन्, जसले धेरै पर्यटकले आफ्ना सामान हराउने समस्या भोगेको देखाउँछ । त्यसैगरी २३ वटा चोरी र १५ वटा सामग्री हानि-नोक्सानीका गुनासो पनि दर्ता भएका छन् भने बाँकी २५ वटा घटनाहरू अन्य विविध प्रकृतिका रहेका छन् । समग्रमा हेर्दा, सामग्री हराउने घटना नै प्रमुख समस्याका रूपमा देखिएकाले यस क्षेत्रमा सचेतना वृद्धि र व्यवस्थापन सुधार आवश्यक देखिन्छ ।

# TABLE OF CONTENTS

<b>CONTENTS</b>	<b>PAGE</b>
<b>PART : I</b>	<b>1</b>
<b>FACT SHEET</b>	<b>1</b>
FACT SHEET 1	3
FACT SHEET 2	4
FACT SHEET 3	5
<b>PART : II</b>	<b>7</b>
<b>TOURIST ARRIVALS</b>	<b>7</b>
TABLE 2.1: TOURIST ARRIVAL AND AVERAGE LENGTH OF STAY, 1964-2025	9
TABLE 2.2: TOURIST ARRIVAL BY MONTH, 1995-2025	12
TABLE 2.3: TOURIST ARRIVAL BY MONTH, 1995-2025 (Excluding Indian citizens)	15
TABLE 2.4: INDIAN TOURIST ARRIVAL BY MONTH, BY AIR, 1995-2025	17
TABLE 2.5: TOURIST ARRIVAL BY YEAR, 1996-2025	19
TABLE 2.6: TOURIST ARRIVAL BY SEX, 1996-2025	21
TABLE 2.7: TOURIST ARRIVAL BY AGE GROUPS, 1995-2025	23
TABLE 2.8: TOURIST ARRIVAL BY MAJOR NATIONALITIES, 2014-2025	26
TABLE 2.9: TOURIST ARRIVAL BY MAJOR NATIONALITIES & MONTH, 2021-2025	28
TABLE 2.10: TOURIST ARRIVAL BY ENTRY POINTS (LAND), 2025	33
<b>PART : III</b>	<b>35</b>
<b>LENGTH OF STAY</b>	<b>35</b>
TABLE 3.1: TOURIST ARRIVAL AND AVERAGE LENGTH OF STAY, 1975-2025	37
<b>PART : IV</b>	<b>39</b>
<b>PURPOSE OF VISIT</b>	<b>39</b>
TABLE 4.1: TOURIST ARRIVAL BY PURPOSE OF VISIT, 1993-2025	41

<b>PART : V</b>	<b>45</b>
<b>TREKKING &amp; EXPEDITION</b>	<b>45</b>
Table 5.1: NUMBERS OF TREKKERS VIA TIMS CARDS BY MONTH, 2025	47
Table 5.2 : NUMBER OF TREKKERS IN DIFFERENT TREKKING AREA, 2013-2025	48
TABLE 5.3: TREKKERS IN RESTRICTED AREAS BY MONTH, 2025	49
Table 5.4: NUMBER OF FOREIGNERS VISITED AT NATIONAL PARKS & CONSERVATION AREAS, 2025	50
TABLE 5.5: NUMBER OF FOREIGN VISITORS TO NATIONAL PARKS & CONSERVATION AREAS, 2016 to 2025	51
TABLE 5.7: NUMBER OF NO SUCCESS AND SUCCESS MEMBERS BY COUNTRY AND GENDER, 2025	55
TABLE 5.8: NUMBER OF NO SUCCESS AND SUCCESS MEMBERS BY PEAK AND GENDER, 2025	59
TABLE 5.9: NUMBER OF EXPEDITION COUNTRYWISE TEAM AND MEMBER, 2025 (Permit issued by Department of Tourism)	61
<b>PART : VI</b>	<b>65</b>
<b>PILGRIMAGE</b>	<b>65</b>
TABLE 6.1: VISITORS (EXCLUDING INDIANS CITIZEN) TO PASHUPATINATH BY MONTH, 2014-2025	67
TABLE 6.2: INDIAN VISITORS AT LUMBINI, 2014-2025	67
TABLE 6.3: THIRD COUNTRY VISITORS (except Indian citizens) AT LUMBINI, 2014– 2025	68
TABLE 6.4: NEPALSE VISITORS AT LUMBINI, 2014– 2025	68
TABLE 6.5: SUMMARY OF VISITORS BY BROAD ORIGIN IN LUMBINI BY MONTH, 2025	69
TABLE 6.6: MAJOR 15 COUNTRY-WISE LUMBINI VISITORS (Except Indian Citizens), 2025	69
CHART 6.1 VISITORS DISTRIBUTION OF LUMBINI BY BROAD COUNTRY ORIGIN, 2025	70
<b>PART : VII</b>	<b>71</b>
<b>INCOME GENERATION</b>	<b>71</b>
TABLE 7.1: GROSS FOREIGN EXCHANGE EARNINGS FROM TOURISM BY FISCAL YEAR, 2057/58 TO 2082/83*	73
TABLE 7.2: FOREIGN EXCHANGE EARNINGS FROM TOURISM, 2000/01-2024/25	75
<b>PART : VIII</b>	<b>77</b>
<b>FLIGHT &amp; PASSENGER MOVEMENT</b>	<b>77</b>
TABLE 8.1: NUMBER OF INTERNATIONAL FLIGHT AND PASSENGER MOVEMENT (Tribhuvan International Airport) BY MONTH, 2025	79

TABLE 8.2: NUMBER OF INTERNATIONAL FLIGHT & PASSENGER MOVEMENT (Tribhuvan International Airport), 2013-2025	80
TABLE 8.3: INTERNATIONAL AIRLINES WISE FLIGHT AND PASSENGER MOVEMENT, 2025	81
TABLE 8.4: NUMBER OF DOMESTIC FLIGHT & PASSENGER MOVEMENT (TIA) 2013-2025	82
TABLE 8.5: NUMBER OF DOMESTIC FLIGHT & PASSENGER MOVEMENT AT (TIA) BY MONTH, 2025	82
TABLE 8.6: NUMBER OF DOMESTIC FLIGHT & PASSENGER MOVEMENT (excluding TIA), 2025	83
TABLE 8.7: NUMBER OF DOMESTIC FLIGHT & PASSENGER MOVEMENT BY DOMESTIC AIRLINES, 2025	84
TABLE 8.8: NUMBER OF INTERNATIONAL FLIGHT & PASSENGER MOVEMENT FROM GOUTAM BUDDHA INTERNATIONAL AIRPORT, BY MONTH, 2025	85
<b>PART : IX</b>	<b>87</b>
<b>TOURISM INDUSTRY</b>	<b>87</b>
TABLE 9.1: TOURIST STANDARD HOTEL REGISTERED IN NEPAL	89
<b>PART : X</b>	<b>93</b>
<b>TOURISM EDUCATION</b>	<b>93</b>
TABLE 10.2: TOURISM AND MOUNTAINEERING RELATED EDUCATION AND TRAININGS	96
<b>PART : XI</b>	<b>97</b>
<b>MISCELLANEOUS</b>	<b>97</b>
TABLE 11.1: TOURIST RELATED ACCIDENT/INCIDENT REPORTED BY MONTH, 2081-82	99
TABLE: 11.2 Tourist Related Accident/ Incident for the year FY 2076/077-081/82	99
TABLE: 11.3 TOURIST RELATED ACCIDENT/INCIDENT REPORTED BY NATIONALITY 2081/82	100
TABLE: 11.4 TOURIST RELATED ACCIDENT/INCIDENT REPORTED BY SEX 2081/82	101
TABLE: 11.5 COMPLAINTS REGISTERED IN TOURIST POLICE OFFICE (2021-2025)	101

## Contents

CHART 1: TOURIST ARRIVAL IN NEPAL 2016-2025.....	11
CHART 2: TOURIST ARRIVAL BY MONTH, 2021-2025.....	14
CHART 3: TOURIST ARRIVALS BY COUNTRY, 2021-2025.....	20
CHART 4: TOURIST ARRIVAL BY SEX, 2021-2025(IN%).....	22
CHART 5: TOURIST ARRIVALS BY AGE GROUP, 2020-2025.....	25
CHART 6: TOURIST ARRIVAL BY PURPOSE OF VISIT, 2025 (%).....	43
CHART 7: VISITORS DISTRIBUTION OF LUMBINI BY BROAD COUNTRY ORIGIN, 2025.....	70
CHART 8: GROSS FOREIGN EXCHANGE EARNINGS FROM TOURISM, FY 2071/72 TO 2081/82.....	74

# PART : I

# FACT SHEET





## FACT SHEET 1

Indicators	2024	2025	% Change
<b>Tourist Arrival by:</b>			
Air	1,023,937	1,015,735	-0.8
Land	123,611	146,630	18.6
Total	1,147,548	1,162,365	1.3
<b>Average Length of Stay</b>	13.3	16.34	22.9
<b>Sex:</b>			
Male	633,219	635,505	0.4
Female	513,892	526,441	2.4
others	437	419	-4.1
<b>By Age groups:</b>			
0-15 years	64,817	63,415	-2.2
16-30 years	213,511	218,515	2.3
31-45 years	352,308	356,049	1.1
46-60 years	309,434	308,327	-0.4
60+ years	202,907	211,194	4.1
Not Specified	4,571	4,865	6.4
<b>Top Five Country of Nationality:</b>			
Rank 1	INDIA	INDIA	
Rank 2	USA	USA	
Rank 3	CHINA	CHINA	
Rank 4	UK	UK	
Rank 5	AUSTRALIA	BANGLADESH	
<b>Purpose of Visit:</b>			
Holiday/Pleasure	693,119	699,744	1.0
Pilgrimage	166,394	167,380	0.6
Trekking & Mountaineering	175,575	165,056	-6.0
Others	112,460	130,185	15.8

## FACT SHEET 2

Indicators	2024	2025	% Change
<b>Tourist Arrival by Major Five Airlines:</b>			
Rank 1	Qatar Airways	Nepal Airlines	
Rank 2	Nepal Airlines	Air India	
Rank 3	Himalaya Airlines	Himalaya Airlines	
Rank 4	Indigo Air	Qatar Airways	
Rank 5	Fly Dubai	Indigo Air	
<b>Mountaineering Expedition:</b>			
Total Team	2,375	2,590	9.05
Total Person	9,191	9,820	6.84
Royalty to Government (RS! 000)	9,25,808	12,62,635	36.38
<b>Revenue from Tourism:</b>			
Total Earning(US\$ ' 000)	6,23,400	6,28,400	0.80
Average expenses per Visitor per day (US\$)	40.8	33.09	-18.91
<b>Tourism Related Enterprises :</b>			
Hotel (star)	214	222	3.74
Hotel ( Non star)	1,364	1,383	1.39
Beds (total)	62,642	64,134	2.38
Travel Agencies	4,963	5,099	2.74
Trekking Agencies	3,252	3,332	2.46
Tourist Guide	5,269	5,466	3.74
Trekking Guide	27,128	27,962	3.07

### FACT SHEET 3

Indicators	2024	2025	% Change
<b>Places Visited:</b>			
National Parks and Wildlife Reserve	464,653	514,160	10.65
Pashupati Area (excluding Indian)	136,139	122,431	-10.07
Lumbini(excluding Indian Tourists)	111,403	153,692	37.96
Manaslu Trekking	12,810	14,720	14.91
Mustang Trekking	5,614	4,178	-25.58
HumlaTrekking	1,045	770	-26.32
Lower Dolpa Trekking	1,348	1,092	-18.99
Kanchanjunga Trekking	1,902	1,680	-11.67
Upper Dolpa Trekking	657	281	-57.23
<b>International Airlines Movement:</b>			
Arrival	16,627	17,300	4.05
Departure	16,620	17,300	4.09
Total	33,247	34,600	4.07



# PART : II

# TOURIST ARRIVALS



Nepal's tourism sector has demonstrated a strong and resilient recovery in 2025, rebounding from the disruptions caused by the global pandemic and reaffirming its position as a premier international destination. The country welcomed a total of 1,162,365 tourists, marking a 1.29% increase compared to 2024. This growth, though moderate in percentage terms, is significant in signaling renewed global travel confidence and the sustained attractiveness of Nepal as a diverse tourism hub.

Tourist arrivals in Nepal come from a variety of countries. India is the largest source, contributing 25.24% of total visitors, mainly because it is nearby and has strong cultural and economic ties with Nepal. The United States is the second-largest source with 9.7%, showing that more long-distance travelers are visiting

Nepal for tourism. China contributes 8.24%, followed by the United Kingdom with 5.07% and Bangladesh with 4.98%. This shows that Nepal is attracting visitors both from neighboring countries and from across the world.

Air travel is the main way tourists enter Nepal. In 2025, out of the total visitors, 1,057,735 tourists (90.99%) arrived by air. This shows that Nepal depends heavily on air connectivity for international tourism. Tribhuvan International Airport is the main entry point, where most international tourists land. The high number of air arrivals is due to better flight connections, easier travel rules, and the growing popularity of Nepal's trekking routes and cultural sites.

On the other hand, 146,630 tourists (9.01%) entered Nepal by land. Although this number is smaller compared to air travel, it is still important, especially for visitors coming from nearby countries. Many tourists travel by road from countries like China, Thailand, and Sri Lanka. This shows that land routes also play a useful role in supporting regional tourism and cross-border travel.

Overall, the tourism sector of Nepal in 2025 shows not only a strong recovery but also clear signs of transformation and diversification. The steady increase in tourist arrivals indicates that international confidence in Nepal as a safe and attractive destination has returned. At the same time, the changing pattern of source countries—ranging from neighboring nations to faraway countries shows that Nepal is no longer dependent on a limited number of visitors but is gradually expanding its global reach.

This growth also reflects changes in travel behavior. Tourists are increasingly seeking diverse experiences such as adventure tourism (trekking), cultural exploration and eco-tourism. As a result, destinations beyond traditional hotspots are also gaining attention, helping to distribute tourism benefits more widely across the country.

Looking ahead, Nepal has strong potential to further strengthen its tourism sector. Continued investment in physical infrastructure—such as airports, roads, hotels, and digital services—will make travel easier and more comfortable. Improved international and regional connectivity will help attract more visitors from emerging markets. At the same time, focusing on sustainable tourism practices—such as environmental conservation, community-based tourism, and preservation of cultural heritage—will ensure long-term benefits without harming natural and cultural resources.

In this context, tourism is expected to remain a key pillar of Nepal's economy, contributing to employment generation, foreign exchange earnings, and balanced regional development in the years to come.

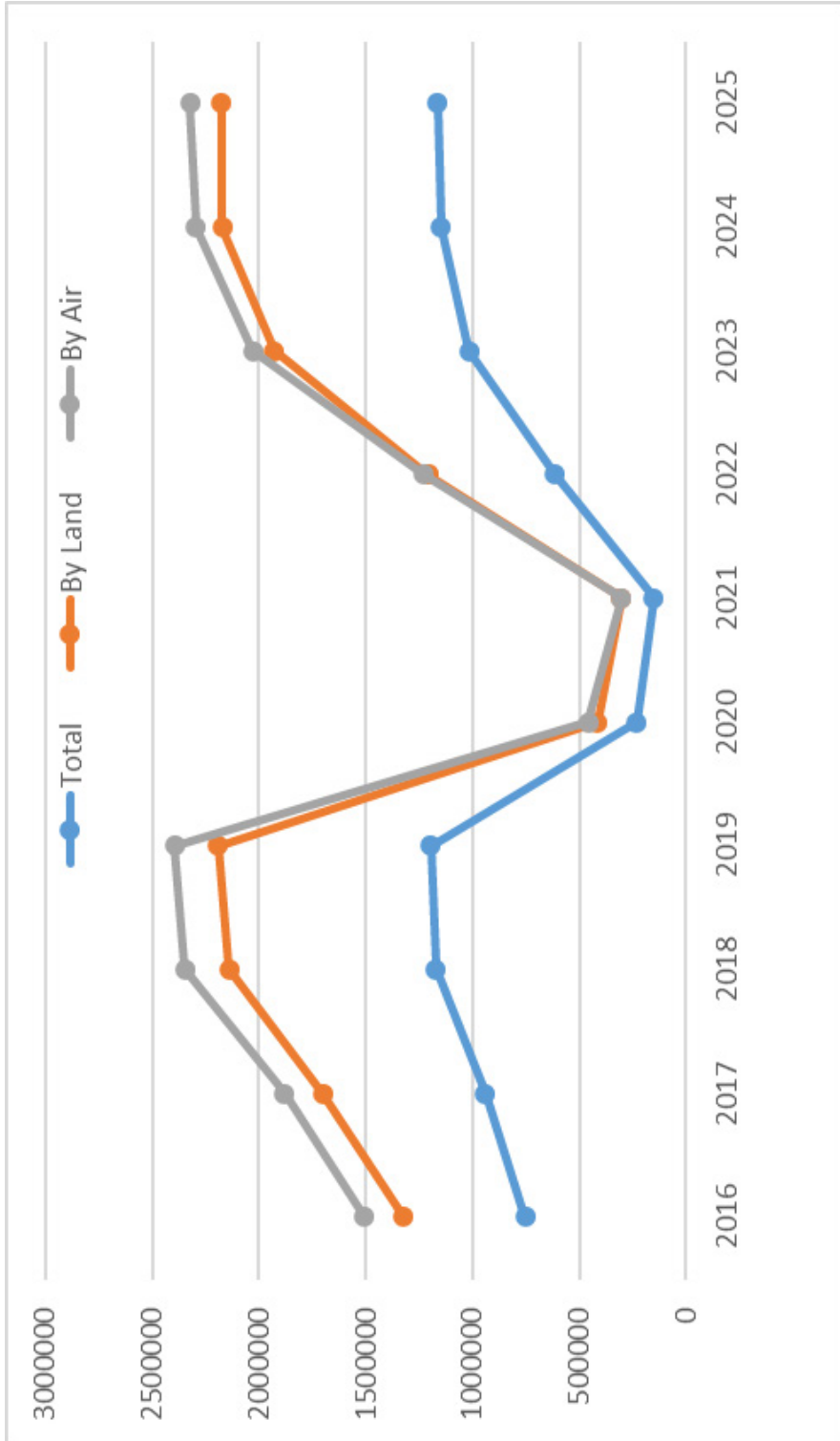
**TABLE 2.1: TOURIST ARRIVAL AND AVERAGE LENGTH OF STAY, 1964-2025**

Year	Total		By Air		By Land		Average Length of Stay
	Number	Annual Growth Rate (%)	Number	Percent	Number	Percent	
1964	9,526	30.9	8,435	88.5	1,091	11.5	NA
1965	9,388	-1.4	8,303	88.4	1,085	11.6	NA
1966	12,567	33.9	11,206	89.2	1,361	10.8	NA
1967	18,093	44	15,064	83.3	3,029	16.7	NA
1968	24,209	33.8	19,717	81.4	4,492	18.6	NA
1969	34,901	44.2	28,130	80.6	6,771	19.4	NA
1970	45,970	31.7	36,508	79.4	9,462	20.6	NA
1971	49,914	8.6	40,369	80.9	9,545	19.1	NA
1972	52,930	6	42,484	80.3	10,446	19.7	NA
1973	68,047	28.6	55,791	82	12,256	18	NA
1974	89,838	32	74,170	82.6	15,668	17.4	13.2
1975	92,440	2.9	78,995	85.5	13,445	14.5	13.05
1976	105,108	13.7	90,498	86.1	14,610	13.9	12.41
1977	129,329	23	110,180	85.2	19,149	14.8	11.6
1978	156,123	20.7	130,034	83.3	26,089	16.7	11.84
1979	162,276	3.9	137,865	85	24,411	15	12.02
1980	162,897	0.4	139,387	85.6	23,510	14.4	11.18
1981	161,669	-0.8	142,084	87.9	19,585	12.1	10.49
1982	175,448	8.5	153,509	87.5	21,939	12.5	13.33
1983	179,405	2.3	152,470	85	26,935	15	11.53
1984	176,634	-1.5	149,920	84.9	26,714	15.1	11.55
1985	180,989	2.5	151,870	83.9	29,119	16.1	11.3
1986	223,331	23.4	182,745	81.8	40,586	18.2	11.16
1987	248,080	11.1	205,611	82.9	42,469	17.1	11.98
1988	265,943	7.2	234,945	88.3	30,998	11.7	12
1989	239,945	53.7	207,907	86.6	32,038	13.4	12
1990	254,885	6.2	226,421	88.8	28,464	11.2	12
1991	292,995	15	267,932	91.4	25,063	8.6	9.25
1992	334,353	14.1	300,496	89.9	33,857	10.1	10.14
1993	293,567	-12.2	254,140	86.6	39,427	13.4	11.94
1994	326,531	11.2	289,381	88.6	37,150	11.4	10
1995	363,395	11.3	325,035	89.4	38,360	10.6	11.27
1996	393,613	8.3	343,246	87.2	50,367	12.8	13.5
1997	421,857	7.2	371,145	88	50,712	12	10.49
1998	463,684	9.9	398,008	85.8	65,676	14.2	10.76
1999	491,504	6	421,243	85.7	70,261	14.3	12.28

Year	Total		By Air		By Land		Average Length of Stay
	Number	Annual Growth Rate (%)	Number	Percent	Number	Percent	
2000	463,646	-5.7	376,914	81.3	86,732	18.7	11.88
2001	361,237	-22.1	299,514	82.9	61,723	17.1	11.93
2002	275,468	-23.7	218,660	79.4	56,808	20.6	7.92
2003	338,132	22.7	275,438	81.5	62,694	18.5	9.6
2004	385,297	13.9	297,335	77.2	87,962	22.8	13.51
2005	375,398	-2.6	277,346	73.9	98,052	26.1	9.09
2006	383,926	2.3	283,819	73.9	100,107	26.1	10.2
2007	526,705	37.2	360,713	68.5	165,992	31.5	11.96
2008	500,277	-5	374,661	74.9	125,616	25.1	11.78
2009	509,956	1.9	379,322	74.4	130,634	25.6	11.32
2010	602,867	18.2	448,800	74.4	154,067	25.6	12.67
2011	736,215	22.1	545,221	74.1	190,994	25.9	13.12
2012	803,092	9.1	598,258	74.5	204,834	25.5	12.16
2013	797,616	-0.7	594,848	74.6	202,768	25.4	12.6
2014	790118	-0.9	585981	74.2	204137	25.8	12.44
2015	538970	-32	407412	75.6	131558	24.4	13.16
2016	753002	40	572563	76	180439	24	13.4
2017	940218	25	760577	81	179641	19	12.6
2018	1173072	25	969287	82.63	203785	17.37	12.4
2019	1197191	2.05	995884	83.19	201307	16.81	12.7
2020	230085	-80.7	183130	79.6	46955	20.4	15.1
2021	150962	-34.3	150625	99.7	337	0.3	15.5
2022	614869	307.3	592631	96.4	22238	3.6	13.1
2023	1014882	65.05	914270	90.09	100612	9.91	13.2
2024	1147548	13.07	1023937	89.23	123611	10.77	13.3
2025	1162365	1.29	1015735	87.39	146630	12.61	16.34

Source: Department of Immigration, Nepal

**CHART 1: TOURIST ARRIVAL IN NEPAL 2016-2025**



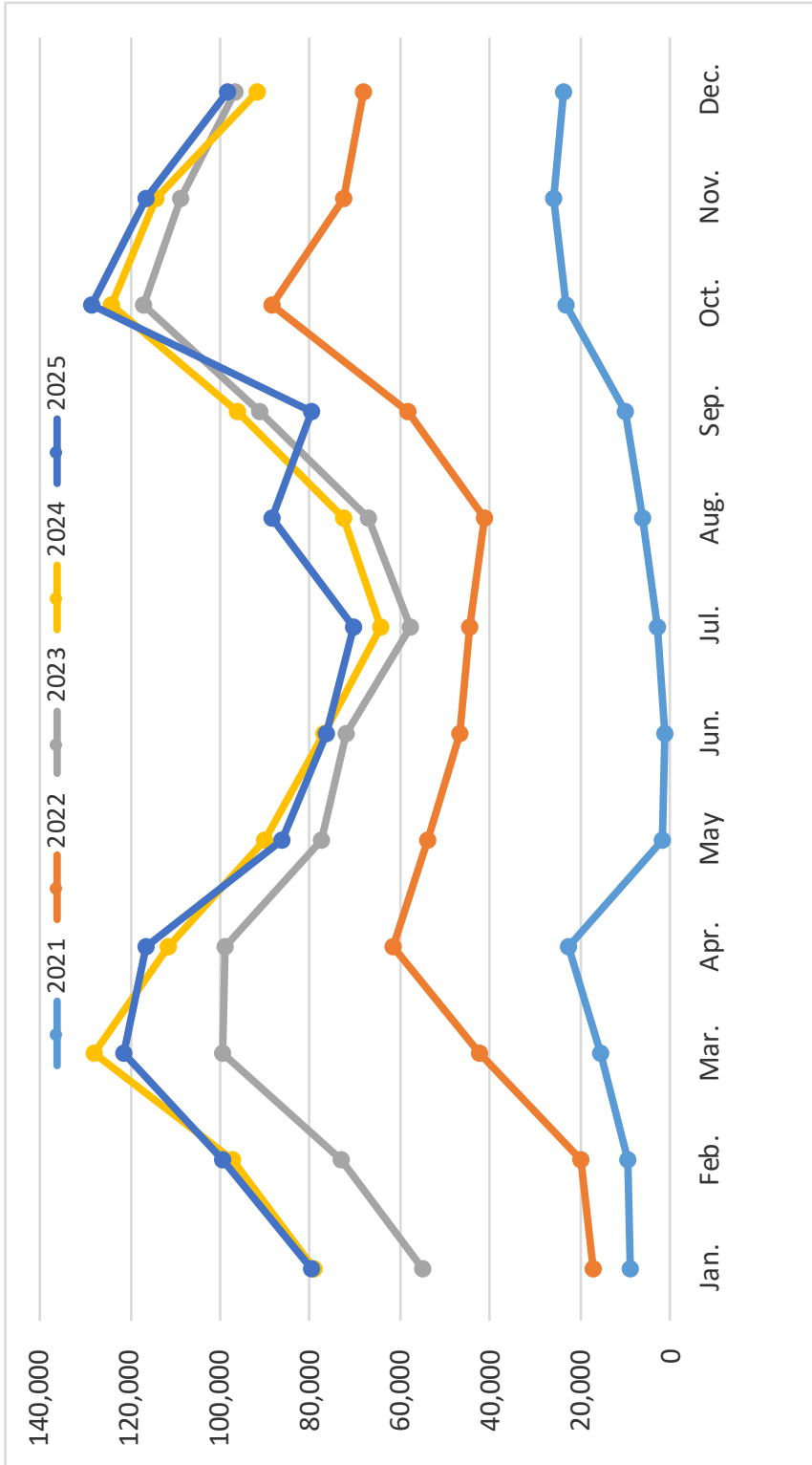
**TABLE 2.2: TOURIST ARRIVAL BY MONTH, 1995-2025**

Year	Jan.	Feb.	Mar.	Apr.	May	Jun.	Jul.	Aug.	Sep.	Oct.	Nov.	Dec.	Total
1995	22,207	28,240	34,219	33,994	27,843	25,650	23,980	27,686	30,569	46,845	35,782	26,380	363,395
1996	27,886	29,676	39,336	36,331	29,728	26,749	22,684	29,080	32,181	47,314	37,650	34,998	393,613
1997	25,585	32,861	43,177	35,229	33,456	26,367	26,091	35,549	31,981	56,272	40,173	35,116	421,857
1998	28,822	37,956	41,338	41,087	35,814	29,181	27,895	36,174	39,664	62,487	47,403	35,863	463,684
1999	29,752	38,134	46,218	40,774	42,712	31,049	27,193	38,449	44,117	66,543	48,865	37,698	491,504
2000	25,307	38,959	44,944	43,635	28,363	26,933	24,480	34,670	43,523	59,195	52,993	40,644	463,646
2001	30,454	38,680	46,709	39,083	28,345	13,030	18,329	25,322	31,170	41,245	30,282	18,588	361,237
2002	17,176	20,668	28,815	21,253	19,887	17,218	16,621	21,093	23,752	35,272	28,723	24,990	275,468
2003	21,215	24,349	27,737	25,851	22,704	20,351	22,661	27,568	28,724	45,459	38,398	33,115	338,132
2004	30,988	35,631	44,290	33,514	26,802	19,793	24,860	33,162	25,496	43,373	36,381	31,007	385,297
2005	25,477	20,338	29,875	23,414	25,541	22,608	23,996	36,910	36,066	51,498	41,505	38,170	375,398
2006	28,769	25,728	36,873	21,983	22,870	26,210	25,183	33,150	33,362	49,670	44,119	36,009	383,926
2007	33,192	39,934	54,722	40,942	35,854	31,316	35,437	44,683	45,552	70,644	52,273	42,156	526,705
2008	36,913	46,675	58,735	38,475	30,410	24,349	25,427	40,011	41,622	66,421	52,399	38,840	500,277
2009	29,278	40,617	49,567	43,337	30,037	31,749	30,432	44,174	42,771	72,522	54,423	41,049	509,956
2010	33,645	49,264	63,058	45,509	32,542	33,263	38,991	54,672	54,848	79,130	67,537	50,408	602,867
2011	42,622	56,339	67,565	59,751	46,202	46,115	42,661	71,398	63,033	96,996	83,460	60,073	736,215
2012	52,501	66,459	89,151	69,796	50,317	53,630	49,995	71,964	66,383	86,379	83,173	63,344	803,092
2013	47,846	67,264	88,697	65,152	52,834	54,599	54,011	68,478	66,755	99,426	75,485	57,069	797,616
2014	70196	69009	79914	80053	62558	50731	46546	59761	52894	80993	76305	61158	790,118
2015	38,616	58,523	79,187	65,729	17,569	18,368	22,967	38,606	39,050	56,584	58,304	45,467	538,970
2016	42,235	60,821	76,444	60,214	46,683	38,852	48,115	66,341	74,670	89,281	72,990	76,356	753002
2017	62,632	84,061	106,291	88,591	62,773	55,956	42,240	73,778	68,634	112,492	99,804	82,966	940218

Year	Jan.	Feb.	Mar.	Apr.	May	Jun.	Jul.	Aug.	Sep.	Oct.	Nov.	Dec.	Total
2018	73,187	89,507	124,686	98,650	68,825	65,159	73,281	87,679	91,874	130,745	147,859	121,620	1,173,072
2019	81,273	102,423	127,351	109,399	78,329	74,883	70,916	94,749	92,604	134,096	130,302	100,866	1,197,191
2020	79,702	98,190	42,776	14	31	102	196	267	584	2,025	1,956	4,242	230,085
2021	8,874	9,266	15,254	22,732	1,531	1,187	3,093	6,093	9,907	23,338	26,135	23,552	150,962
2022	16975	19856	42152	61589	54093	46957	44462	41304	58314	88582	72653	67932	614869
2023	55074	73255	99426	98773	77703	72250	57726	67153	91012	117306	108630	96574	1014882
2024	79101	97423	128167	111382	90205	76733	64598	72717	96302	124391	114496	92033	1147548
2025	79990	99585	121632	116487	86216	76425	70193	88681	79981	128443	116552	98180	1162365

Source: Department of Immigration, Nepal

**CHART 2: TOURIST ARRIVAL BY MONTH, 2021-2025**



**TABLE 2.3: TOURIST ARRIVAL BY MONTH, 1995-2025 (Excluding Indian citizens)**

Year	Jan	Feb	Mar	Apr	May	Jun	July	Aug	Sep	Oct	Nov	Dec	Total
1995	15,758	19,482	25,381	23,419	12,491	9,270	14,141	20,211	22,344	38,398	28,177	17,063	246,135
1996	17,678	23,629	31,738	25,458	14,042	9,777	13,724	21,833	23,201	38,139	29,221	22,661	271,101
1997	16,856	24,151	33,389	24,343	14,836	9,973	16,024	24,772	24,344	46,110	30,712	22,909	288,419
1998	20,124	27,855	33,097	28,997	15,647	11,195	15,724	26,387	29,241	49,787	38,587	23,814	320,455
1999	20,554	29,259	38,158	29,637	22,305	12,731	16,782	29,402	33,650	54,099	38,835	25,431	350,843
2000	21,092	33,939	38,959	36,430	18,658	12,036	16,842	27,205	34,643	51,100	45,318	31,509	367,731
2001	25,158	32,763	40,684	32,211	17,406	8,929	13,965	21,658	26,132	37,198	25,795	15,018	296,917
2002	13,180	16,960	25,102	16,877	11,751	8,338	9,962	15,515	18,768	30,251	24,044	17,943	208,691
2003	15,659	19,321	22,260	20,303	15,288	7,835	13,607	19,149	22,577	38,040	31,750	25,980	251,769
2004	22,947	28,743	35,468	26,279	15,581	9,776	17,070	27,657	21,829	38,104	29,330	22,187	294,971
2005	19,531	17,061	25,847	18,311	15,438	11,170	14,921	26,119	27,413	40,553	34,778	27,822	278,964
2006	21,126	21,320	30,169	18,435	13,517	11,841	15,066	24,966	26,327	43,026	37,402	27,009	290,204
2007	25,857	33,133	48,022	32,794	23,296	18,937	26,160	37,658	38,813	65,745	46,822	33,458	430,695
2008	30,473	40,334	51,364	31,952	19,619	12,922	18,097	32,084	33,870	60,938	47,467	29,980	409,100
2009	23,969	34,594	45,950	34,938	20,362	17,078	19,942	36,121	36,241	65,592	48,667	32,618	416,072
2010	28,076	43,289	56,632	37,208	21,053	17,967	24,273	43,172	44,650	69,982	57,304	38,363	481,969
2011	34,541	48,045	58,455	49,089	29,692	25,081	28,875	55,204	50,560	86,988	72,436	47,745	586,711
2012	42,055	55,301	72,882	53,745	30,140	30,084	34,837	57,590	54,654	79,536	74,603	51,850	637,277
2013	40,296	58,195	73,434	53,079	33,295	28,507	37,666	57,642	51,912	77,163	59,630	45,822	616,642
2014	57,062	58,874	70,008	67,165	41,979	30,024	37,567	51,828	45,807	72,964	69,143	52,354	654,775
2015	32,633	51,251	71,573	56,214	13,746	13,174	17,901	31,571	32,351	51,683	52,542	39,207	463,846
2016	36,563	54,272	68,595	50,831	34,332	26,432	37,497	54,924	64,143	81,706	62,304	63,154	634,753

Year	Jan	Feb	Mar	Apr	May	Jun	July	Aug	Sep	Oct	Nov	Dec	Total
2017	52,085	72,865	93,562	73,996	42,762	35,838	32,047	59,721	60,283	101,824	87,890	67,077	779,950
2018	61,035	81,937	110,275	82,038	47,097	44,260	54,896	69,384	76,520	119,098	132,116	100,093	978,749
2019	63,581	84,755	109,095	92,293	52,314	44,369	48,796	67,196	74,102	118,486	110,622	77,432	943,041
2020	62,820	83,304	35,962	12	24	76	170	244	543	1,918	1,831	2,845	189,749
2021	4,845	4,499	7,602	9,559	944	824	1,987	4,103	6,375	14,599	15,715	15,238	86,290
2022	13,060	13,841	27,118	39,113	27,339	23,709	27,063	25,157	43,843	71,672	52,121	41,499	405,535
2023	38,638	54,854	73,515	67,336	41,128	33,405	36,369	40,488	62,318	98,826	84,187	63,882	694,946
2024	54,962	71,845	97,468	81,217	51,917	38,899	43,107	46,884	73,317	108,078	94,581	67,492	829,767
2025	59,504	79,700	100,218	90,554	58,056	43,763	43,041	53,175	64,184	111,143	97,557	68,086	868,981

Source: Department of Immigration, Nepal

**TABLE 2.4: INDIAN TOURIST ARRIVAL BY MONTH, BY AIR, 1995-2025**

Year	Jan	Feb	Mar	Apr	May	Jun	July	Aug	Sep	Oct	Nov	Dec	Total
1995	6,449	8,758	8,838	10,575	15,352	16,380	9,839	7,475	8,225	8,447	7,605	9,317	117,260
1996	10,208	6,047	7,598	10,873	15,686	16,972	8,960	7,247	8,980	9,175	8,429	12,337	122,512
1997	8,729	8,710	9,788	10,886	18,620	16,394	10,067	10,777	7,637	10,162	9,461	12,207	133,438
1998	8,698	10,101	8,241	12,090	20,167	17,986	12,171	9,787	10,423	12,700	8,816	12,049	143,229
1999	9,198	8,875	8,060	11,137	20,407	18,318	10,411	9,047	10,467	12,444	10,030	12,267	140,661
2000	4,215	5,020	5,985	7,205	9,705	14,897	7,638	7,465	8,880	8,095	7,675	9,135	95,915
2001	5,296	5,917	6,025	6,872	10,939	4,101	4,364	3,664	5,038	4,047	4,487	3,570	64,320
2002	3,996	3,708	3,713	4,376	8,136	8,880	6,659	5,578	4,984	5,021	4,679	7,047	66,777
2003	5,556	5,028	5,477	5,548	7,416	12,516	9,054	8,419	6,147	7,419	6,648	7,135	86,363
2004	8,041	6,888	8,822	7,235	11,221	10,017	7,790	5,505	3,667	5,269	7,051	8,820	90,326
2005	5,946	3,277	4,028	5,103	10,103	11,438	9,075	10,791	8,653	10,945	6,727	10,348	96,434
2006	7,643	4,408	6,704	3,548	9,353	14,369	10,117	8,184	7,035	6,644	6,717	9,000	93,722
2007	7,335	6,801	6,700	8,148	12,558	12,379	9,277	7,025	6,739	4,899	5,451	8,698	96,010
2008	6,440	6,341	7,371	6,523	10,791	11,427	7,330	7,927	7,752	5,483	4,932	8,860	91,177
2009	5,309	6,023	3,617	8,399	9,675	14,671	10,490	8,053	6,530	6,930	5,756	8,431	93,884
2010	5,569	5,975	6,426	8,301	11,489	15,296	14,718	11,500	10,198	9,148	10,233	12,045	120,898
2011	8,081	8,294	9,110	10,662	16,510	21,034	13,786	16,194	12,473	10,008	11,024	12,328	149,504
2012	10,446	11,158	16,269	16,051	20,177	23,546	15,158	14,374	11,729	6,843	8,570	11,494	165,815
2013	7,550	9,069	15,263	12,073	19,539	26,092	16,345	10,836	14,843	22,263	15,855	11,247	180,974
2014	13,134	10,135	9,906	12,888	20,579	20,707	8,979	7,933	7,087	8,029	7,162	8,804	135,343
2015	5,983	7,272	7,614	9,515	3,823	5,194	5,066	7,035	6,699	4,901	5,762	6,260	75,124
2016	5,672	6,549	7,849	9,383	12,351	12,420	10,618	11,417	10,527	7,575	10,686	13,202	118,249
2017	10,547	11,196	12,729	14,595	20,011	20,118	10,193	14,057	8,351	10,668	11,914	15,889	160,268

Year	Jan	Feb	Mar	Apr	May	Jun	July	Aug	Sep	Oct	Nov	Dec	Total
2018	12152	7570	14411	16612	21728	20899	18385	18295	15354	11647	15743	21527	194323
2019	17,692	17,668	18,256	17,106	26,015	30,514	22,120	27,553	18,502	15,610	19,680	23,434	254,150
2020	16,800	14,840	6,793	2	26	7	41	23	41	107	123	1,563	40,366
2021	4,029	4,769	7,652	13,173	587	363	1,106	1,990	3,532	8,739	10,420	8,314	64,672
2022	3915	6015	15034	22476	26754	23248	17399	16147	14471	16910	20532	26433	209334
2023	16436	18401	25911	31437	36575	38845	21357	26665	28694	18480	24443	32692	319936
2024	24074	25540	30642	30066	38198	37753	21451	25773	22884	16254	19858	24471	316964
2025	20486	19885	21414	25933	28160	32662	27152	35506	15797	17300	18995	30094	293384

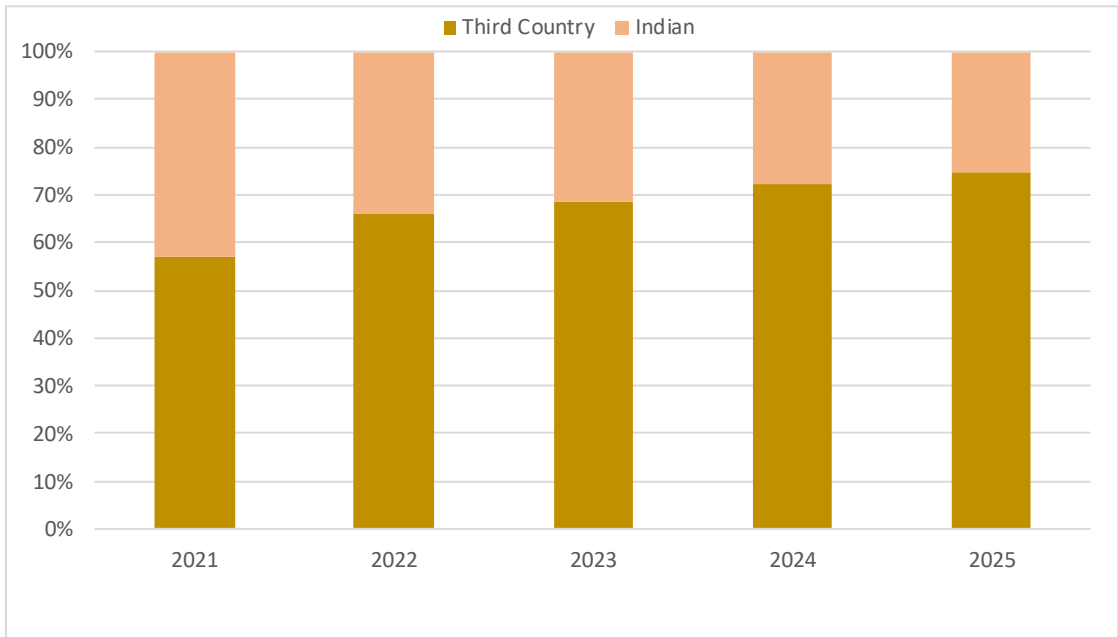
Source: Department of Immigration, Nepal

**TABLE 2.5: TOURIST ARRIVAL BY YEAR, 1996-2025**

Year	Third Country	Indian	Total	% Change
1996	271101	122512	393613	8.3
1997	288419	133438	421857	7.2
1998	320455	143229	463684	9.9
1999	350843	140661	491504	6.0
2000	367731	95915	463646	-5.7
2001	296917	64320	361237	-22.1
2002	208691	66777	275468	-23.7
2003	251769	86363	338132	22.7
2004	294971	90326	385297	13.9
2005	278964	96434	375398	-2.6
2006	290204	93722	383926	2.3
2007	430695	96010	526705	37.2
2008	409100	91177	500277	-5.0
2009	416072	93884	509956	1.9
2010	481969	120898	602867	18.2
2011	586711	149504	736215	22.1
2012	637277	165815	803092	9.1
2013	616642	180974	797616	-0.7
2014	654775	135343	790118	-0.9
2015	464156	74814	538970	-31
2016	634,753	118249	753002	40
2017	779386	160832	940218	25
2018	978749	194323	1173072	25
2019	943041	254150	1197191	2
2020	189749	40336	230085	-80.7
2021	86290	64672	150962	-34.3
2022	405535	209334	614869	307.3
2023	694946	319936	1014882	65.05
2024	829767	317781	1147548	13.07
2025	868981	293384	1162365	1.29

Source: Department of Immigration, Nepal

### CHART 3: TOURIST ARRIVALS BY COUNTRY, 2021-2025

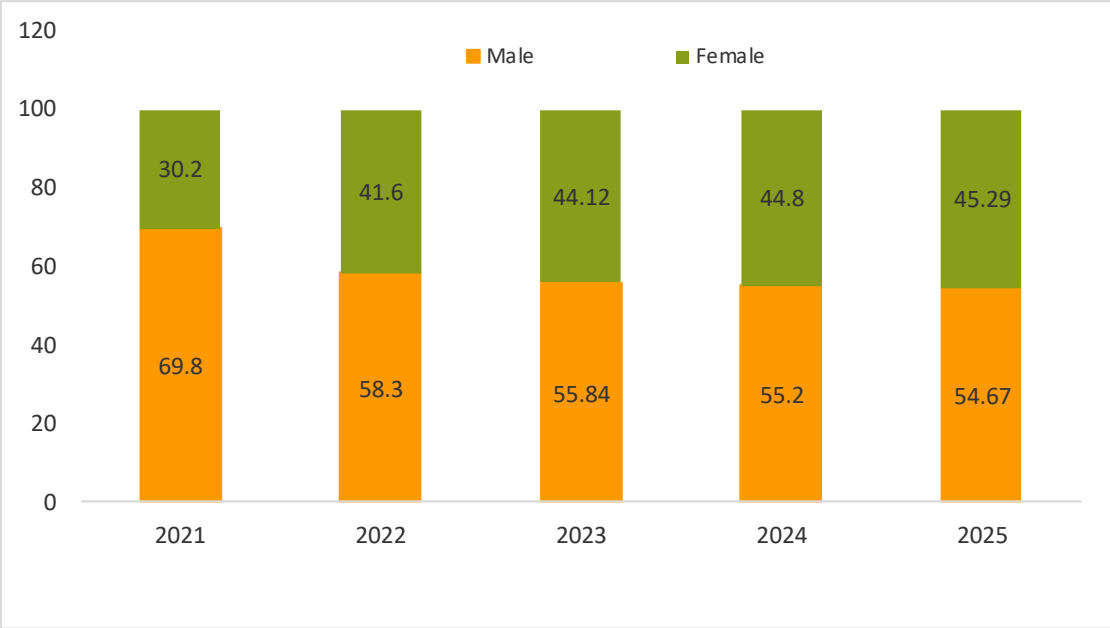


**TABLE 2.6: TOURIST ARRIVAL BY SEX, 1996-2025**

Year	Sex				Others	%	Total
	Male	%	Female	%			
1996	233,055	59.2	160,558	40.8	.....	.....	393,613
1997	251,358	59.6	170,499	40.4	.....	.....	421,857
1998	267,871	57.8	195,813	42.2	.....	.....	463,684
1999	286,161	58.2	205,343	41.8	.....	.....	491,504
2000	266,937	57.6	196,709	42.4	.....	.....	463,646
2001	213465	59.1	147772	40.9	.....	.....	361,237
2002	174,710	63.4	100,758	36.6	.....	.....	275,468
2003	204,732	60.5	133,400	39.5	.....	.....	338,132
2004	255,303	66.3	129,994	33.7	.....	.....	385297
2005	257,972	68.7	117,426	31.3	.....	.....	375,398
2006	218,818	57.0	165,108	43.0	.....	.....	383,926
2007	290,688	55.2	236,017	44.8	.....	.....	526,705
2008	286,983	57.4	213,294	42.6	.....	.....	500,277
2009	288,155	56.5	221,801	43.5	.....	.....	509,956
2010	361,611	60.0	241,256	40.0	.....	.....	602,867
2011	352,059	47.8	384,156	52.2	.....	.....	736,215
2012	439,270	54.7	363,822	45.3	.....	.....	803,092
2013	449,058	56.3	348,558	43.7	.....	.....	797,616
2014	445,627	56.4	344,491	43.6	.....	.....	790,118
2015	289,158	53.7	249,813	46.4	.....	.....	538,970
2016	399,091	53.0	353,911	47.0	.....	.....	753,002
2017	509,585	54.2	430,633	45.8	.....	.....	940,218
2018	624,928	53.3	548,144	47.7	.....	.....	1,173,072
2019	634,392	53.0	562,799	47.0	.....	.....	1,197,191
2020	124,048	53.9	106,037	46.1	.....	.....	230,085
2021	105,410	69.8	45,552	30.2	.....	.....	150,962
2022	358683	58.3	256012	41.6	174	0.03	614869
2023	566665	55.84	447807	44.12	410	0.04	1014882
2024	633219	55.2	513892	44.8	437	0.04	1147548
2025	635505	54.67	526441	45.29	419	0.04	1162365

*Source: Department of Immigration, Nepal*

**CHART 4: TOURIST ARRIVAL BY SEX, 2021-2025(in%)**



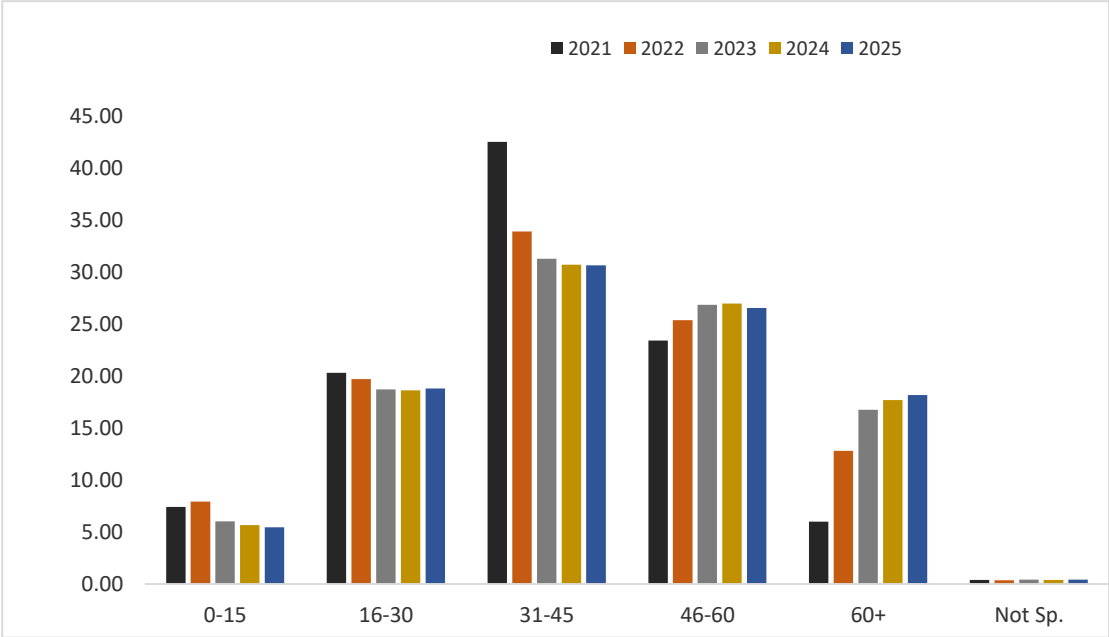
**TABLE 2.7: TOURIST ARRIVAL BY AGE GROUPS, 1995-2025**

Year	Total	Age Groups					
		0-15	16-30	31-45	46-60	60+	Not Sp.
1995	363,395	22,878	106,603	120,212	76,647	37,055	NA
	(100.00)	(6.30)	(29.30)	(33.10)	(21.10)	(10.20)	NA
1996	393,613	22,185	94,924	116,307	89,751	70,446	NA
	-100	-5.6	-24.1	-29.5	-22.8	-17.9	NA
1997	421,857	23,840	121,286	126,828	107,111	42,792	NA
	(100.00)	(5.70)	(28.80)	(30.10)	(25.40)	(10.10)	NA
1998	463,684	26,763	122,103	151,846	121,190	41,782	NA
	(100.00)	(5.80)	(26.30)	(32.70)	(26.10)	(9.00)	NA
1999	491,504	30,967	150,307	155,985	113,314	40,913	NA
	(100.00)	(6.30)	(30.60)	(31.70)	(23.10)	(8.30)	NA
2000	463,646	19,136	119,816	148,063	125,140	51,491	NA
	(100.00)	(4.10)	(25.80)	(31.90)	(27.00)	(11.10)	NA
2001	361,237	14608	95801	115678	93621	41529	NA
	(100.00)	(4.00)	(26.50)	(32.00)	(25.90)	(11.50)	NA
2002	275,468	12425	67774	99622	67017	28630	NA
	-100	-4.5	-24.6	-36.2	-24.3	-10.4	NA
2003	338,132	16056	78,357	99,740	85,753	58,226	NA
	(100.00)	(4.70)	(23.20)	(29.50)	(25.40)	(17.20)	NA
2004	385297	38,734	84125	128,267	96,920	37,251	NA
	(100.00)	(10.10)	(21.80)	(33.30)	(25.20)	(9.70)	NA
2005	375,398	30,429	57,115	114,103	106,077	67,674	NA
	(100.00)	(8.10)	(15.20)	(30.40)	(28.30)	(18.00)	NA
2006	383,926	37,433	75,626	123,541	95,260	52,066	NA
	(100.00)	(9.80)	(19.70)	(32.20)	(24.80)	(13.60)	NA
2007	526,705	38,870	112,879	164,488	130,756	69,927	9,785
	(100.00)	(7.40)	(21.40)	(31.20)	(24.80)	(13.30)	(1.90)
2008	500,277	42,581	106,596	150,171	121,387	60,531	19,011
	(100.00)	(8.50)	(21.30)	(30.00)	(24.30)	(12.10)	(3.80)
2009	509,956	84,891	140,805	141,955	99,197	39,638	3,470
	(100.00)	(16.60)	(27.60)	(27.80)	(19.50)	(7.80)	(0.70)
2010	602,867	41,156	120,395	189,852	172,800	64,593	14,071
	(100.00)	(6.80)	(20.00)	(31.50)	(28.70)	(10.70)	(2.30)
2011	736,215	32,795	171,081	212,176	177,983	82,726	59,454
	(100.00)	(4.50)	(23.20)	(28.80)	(24.20)	(11.20)	(8.10)
2012	803,092	35,468	181,558	231,117	201,835	109,239	43,875
	(100.00)	(4.40)	(22.60)	(28.80)	(25.10)	(13.60)	(5.50)

Year	Total	Age Groups					
		0-15	16-30	31-45	46-60	60+	Not Sp.
2013	797,616	46,262	190,630	237,690	195,416	115,654	11,964
	(100.00)	(5.90)	(24.10)	(30.10)	(24.70)	(14.60)	(1.50)
2014	790,118	50,441	185,685	235,738	183,582	106,666	28,007
	(100.00)	(6.40)	(23.50)	(29.80)	(23.20)	(13.50)	(3.50)
2015	538,970	19,614	123,444	157,416	129,614	74,518	34,365
	(100.00)	(3.60)	(22.90)	(29.20)	(24.00)	(13.80)	(6.40)
2016	753,002	29,825	154,960	218,479	199,139	130,627	19,972
	(100.00)	(4.00)	(20.60)	(29.00)	(26.40)	(17.30)	(2.70)
2017	940,218	35,332	217,143	292,827	244,342	141,316	9,258
	(100.00)	(3.80)	(23.10)	(31.10)	(26.00)	(15.00)	(1.00)
2018	1,173,072	54,870	269,648	360,237	303,452	173,299	11,566
	(100.00)	(4.70)	(23.00)	(30.70)	(25.90)	(14.80)	(1.00)
2019	1,197,191	57,523	254,399	383,155	305,651	176,872	19,591
	(100.00)	(4.80)	(21.20)	(32.00)	(25.50)	(14.80)	(1.60)
2020	230,085	9,768	43,403	67,829	61,874	47,211	0
	(100.00)	(4.20)	(18.9)	(29.50)	(26.90)	(20.5)	0.00
2021	150,962	11,142	30,713	64,164	35,351	9,036	556
	(100.00)	(7.40)	(20.30)	(42.50)	(23.40)	(6.00)	(0.40)
2022	614869	48664	121096	208299	155985	78660	2165
	(100.00)	(7.91)	(19.69)	(33.88)	(25.37)	(12.79)	(0.35)
2023	1014882	61316	189790	317170	272342	169791	4473
	(100.00)	(6.04)	(18.70)	(31.25)	(26.84)	(16.73)	(0.44)
2024	1147548	64817	213511	352308	309434	202907	4571
	(100.00)	(5.65)	(18.61)	(30.70)	(26.96)	(17.68)	(0.40)
2025	1162365	63415	218515	356049	308327	211194	4865
	(100.00)	(5.46)	(18.80)	(30.63)	(26.53)	(18.17)	(0.42)

Figures in parenthesis represent percentage of the total.

**CHART 5: TOURIST ARRIVALS BY AGE GROUP, 2021-2025**



**TABLE 2.8: TOURIST ARRIVAL BY MAJOR NATIONALITIES, 2014-2025**

Nationality	2014	2015	2016	2017	2018	2019	2020	2021	2022	2023	2024	2025
Australia	24516	14816	25507	33371	38429	38972	6793	2477	26894	38798	43978	49564
%	3.1	2.7	3.39	3.55	3.28	3.3	3	1.64	4.37	3.82	3.83	4.26
Bangladesh	21851	14831	23440	29060	26355	25849	4917	5044	25383	36483	48849	57885
%			3.11	3.09	2.25	2.2	2.1	3.34	4.13	3.59	4.26	4.98
Canada	11610	6495	12491	15105	17317	17102	3102	2438	9755	14690	16073	17008
%	1.5	1.2	1.67	1.6	1.48	1.4	1.3	1.61	1.59	1.45	1.4	1.46
China	123805	64675	104005	104664	153633	169543	19257	6198	9599	60878	101874	95732
%	15.7	12	13.81	11.1	13.1	14.2	8.4	4.1	1.56	6	8.88	8.24
France	24097	10885	20863	26140	31810	30646	4540	2829	16933	23168	25118	24590
%	3	2	2.27	2.8	2.71	2.6	2	1.87	2.75	2.28	2.19	2.12
Germany	18028	12216	23812	29918	36879	36641	5896	2929	17742	26980	29799	30320
%	2.3	2.3	3.16	3.2	3.17	3.1	2.6	1.94	2.89	2.66	2.6	2.61
India	135343	75124	118249	160832	194323	254150	40336	64672	209334	319936	317781	293384
%	17.1	13.9	15.7	17.1	16.57	21.2	17.5	42.83	34.05	31.52	27.69	25.24
Italy	10347	3972	9911	11840	15342	15676	1599	613	6388	12948	14472	14905
%	1.3	0.7	1.32	1.3	1.31	1.3	0.7	0.4	1.04	1.28	1.26	1.28
Japan	25829	14465	22979	27326	29817	30534	5599	784	5714	16463	22854	24859
%	3.3	2.7	3.05	2.9	2.54	2.6	2.4	0.51	0.93	1.62	1.99	2.14
South Korea	23205	18112	25171	34301	37218	31108	6944	1263	8240	23743	27068	23615
%			3.34	3.6	3.17	2.5	3	0.836	1.34	2.34	2.36	2.03
Malaysia				18284	22833	21329	3460	331	9569	18807	20973	22591
%			1.94	1.94	1.95	1.8	1.5	0.21	1.56	1.85	1.83	1.94

Nationality	2014	2015	2016	2017	2018	2019	2020	2021	2022	2023	2024	2025
Myanmar			25796	30852	41402	36274	20911	344	2427	12929	12910	22085
%			3.42	3.3	3.53	3	9.1	0.22	0.39	1.27	1.13	1.90
Netherlands	12320	4324	11453	13393	15352	15034	2563	1303	7515	10718	11391	11314
%	1.6	0.8	1.52	1.4	1.31	1.3	1.1	0.86	1.22	1.06	0.99	0.97
Spain	13110	4307	12255	15953	20214	19383	1625	1151	8349	12393	13968	13143
%	1.7	0.8	1.63	1.7	1.72	1.6	0.7	0.76	1.36	1.22	1.022	1.13
Sri Lanka	37546	43117	57521	45361	69640	56316	13328	463	4606	21851	30227	37678
%	4.8	8	7.64	4.8	5.94	4.7	5.8	0.3	0.75	2.15	2.63	3.24
Thailand	33422	32338	26722	39154	52429	41660	20778	576	9935	25678	30746	30361
%	4.2	6	3.55	4.2	4.47	3.5	9	0.38	1.62	2.53	2.68	2.61
U.S.A.	49830	53897	53645	79146	91895	93241	17767	22854	77083	100355	111217	112708
%	6.3	10	7.12	8.4	7.83	7.8	7.7	15.13	12.54	9.89	9.69	9.70
U.K.	36759	204469	46295	51058	63466	61144	11762	8680	45094	52865	54765	58935
%	4.7	3.8	6.15	5.4	5.41	5.1	5.1	5.74	7.33	5.21	4.77	5.07
Others	218639	171688	119245	174460	214718	202589	38908	26013	114309	185199	213505	221688
%	27.7	31.9	15.84	18.6	18.3	17.1	17	17.23	18.591	18.25	18.61	19.07
Total	790,118	538,970	753,002	940,218	1173072	1197191	230085	150962	614869	1014882	1147548	1162365

Source: Department of Immigration, Nepal

**TABLE 2.9: TOURIST ARRIVAL BY MAJOR NATIONALITIES & MONTH, 2021-2025**

Nationality	Year	Month												Total
		Jan.	Feb.	Mar.	Apr.	May	Jun.	July	Aug.	Sept.	Oct.	Nov.	Dec.	
Australia	2021	66	37	99	97	9	11	52	64	77	139	615	1211	2477
	2022	1213	1053	1450	2747	1618	1482	1148	1210	4370	3946	3375	3282	26894
	2023	3441	2969	3635	3828	2184	1639	1102	1347	3685	6075	5060	3834	38798
	2024	3421	2976	4345	4110	2194	1589	1901	1763	5036	6929	4829	4885	43978
	2025	4301	3825	4228	5319	2679	1831	1665	2223	6943	6177	5393	4980	49564
Bangladesh	2021	27	156	567	162	6	0	8	31	62	481	1382	2162	5044
	2022	1236	888	2152	1583	3268	2058	1874	1751	2312	2720	2218	3323	25383
	2023	2468	1907	2466	2217	2164	2402	2694	3190	3716	4292	3761	5206	36483
	2024	3629	4099	2946	4003	3458	3857	3470	3077	4103	4477	5148	6582	48849
	2025	5406	5043	3576	5398	4280	5449	4413	4262	3128	4641	5684	6605	57885
Canada	2021	96	116	127	183	24	14	79	145	261	563	479	351	2438
	2022	361	420	753	1065	764	630	616	552	1078	1682	1184	650	9755
	2023	1001	1369	1708	1672	1031	593	653	640	1109	2442	1570	902	14690
	2024	929	1358	1851	1637	1014	666	1004	753	1465	2464	1984	948	16073
	2025	1119	1686	2138	1839	1260	768	936	879	1464	2197	1740	982	17008
China	2021	1876	708	1207	803	78	38	50	256	233	308	363	278	6198
	2022	320	206	434	350	391	450	1595	1288	1332	946	1038	1249	9599
	2023	1435	2266	2635	4771	4667	4343	5695	5025	8169	6880	7621	7371	60878
	2024	7269	9180	12093	9748	8379	7493	6819	6614	8042	7747	9459	9031	101874
	2025	8191	8467	11444	9034	8824	6735	6891	7533	5308	6755	7870	8680	95732

Nationality	Year	Month												Total
		Jan.	Feb.	Mar.	Apr.	May	Jun.	July	Aug.	Sept.	Oct.	Nov.	Dec.	
France	2021	107	90	169	162	17	14	41	128	235	739	808	319	2829
	2022	283	537	1638	1992	858	507	759	656	1409	4929	2561	804	16933
	2023	857	1463	3009	3211	1097	614	996	822	1682	5270	3205	942	23168
	2024	970	1697	3240	3753	1282	550	853	711	1799	5485	3840	938	25118
	2025	1010	1873	3280	3265	1393	627	773	795	1323	5048	4212	991	24590
Germany	2021	97	126	208	218	13	16	31	81	225	790	725	399	2929
	2022	364	645	1826	2132	776	436	718	809	1942	4935	2292	867	17742
	2023	985	2108	4149	3245	1165	514	637	875	2851	5915	3512	1024	26980
	2024	1282	2494	5254	3271	1391	546	726	849	2704	6017	3926	1339	29799
	2025	1321	2453	4709	3835	1578	618	703	1086	2263	6368	4134	1252	30320
India	2021	4029	4767	7652	13173	587	363	1106	1990	3532	8739	10420	8314	64672
	2022	3915	6015	15034	22476	26754	23248	17399	16147	14471	16910	20532	26433	209334
	2023	16436	18401	25911	31437	36575	38845	21357	26665	28694	18480	24443	32692	319936
	2024	24139	25578	30699	30165	38288	37834	21491	25833	22985	16313	19915	24541	317781
	2025	20486	19885	21414	25933	28160	32662	27152	35506	15797	17300	18995	30094	293384
Italy	2021	29	32	54	55	6	6	9	33	68	98	142	81	613
	2022	66	72	234	508	368	181	350	941	538	1471	833	826	6388
	2023	414	649	1219	1435	614	220	604	1496	931	2467	1686	1213	12948
	2024	517	805	1581	1993	649	267	450	1615	971	2635	1968	1021	14472
	2025	525	818	1393	2557	804	354	487	1751	765	2707	1774	970	14905

Nationality	Year	Month												Total
		Jan.	Feb.	Mar.	Apr.	May	Jun.	July	Aug.	Sept.	Oct.	Nov.	Dec.	
Japan	2021	42	28	74	107	0	13	6	24	98	94	159	139	784
	2022	130	85	190	371	272	322	466	541	596	841	955	945	5714
	2023	643	1066	1677	1312	913	764	871	1520	1436	1850	2072	2339	16463
	2024	1568	2027	2648	2073	1233	953	1114	1881	1887	2196	2699	2575	22854
	2025	1570	2706	2948	2115	1495	1019	1214	2399	1454	2321	2860	2758	24859
Malaysia	2021	19	21	16	44	3	5	5	8	32	35	55	88	331
	2022	106	117	314	507	454	469	738	960	1135	1590	1593	1586	9569
	2023	675	1819	1663	2000	1321	1079	998	1188	1666	2019	2388	1991	18807
	2024	939	1815	2198	2310	1814	1014	1125	1285	2280	2278	2126	1769	20953
	2025	934	1854	2380	2183	2083	1348	1205	1431	1677	2461	2606	2429	22591
Myanmar	2021	21	38	101	58	6	4	1	8	22	13	27	45	344
	2022	39	27	29	53	54	75	43	66	76	102	927	936	2427
	2023	820	2232	2188	1339	91	115	151	78	126	752	2505	2532	12929
	2024	1222	2919	3131	1184	153	125	110	152	160	698	1547	1509	12910
	2025	1126	3269	3752	1779	233	141	144	182	145	3038	4484	3792	22085
Netherlands	2021	59	74	122	139	7	5	29	69	120	251	240	188	1303
	2022	142	253	463	806	315	201	598	483	804	1842	1148	460	7515
	2023	437	805	1402	1285	542	220	602	563	891	2081	1299	591	10718
	2024	492	1026	1563	1300	665	246	675	500	870	2166	1397	491	11391
	2025	573	983	1518	1320	648	241	608	528	816	2162	1400	517	11314

Nationality	Year	Month												Total
		Jan.	Feb.	Mar.	Apr.	May	Jun.	July	Aug.	Sept.	Oct.	Nov.	Dec.	
South Korea	2021	104	75	115	83	12	32	58	64	121	196	229	174	1263
	2022	209	163	247	448	362	335	558	574	810	1371	1670	1493	8240
	2023	2198	3246	2640	1544	1039	888	1375	1099	2018	2449	2885	2362	23743
	2024	3812	2351	2888	1980	1374	875	1537	1602	2351	2442	3288	2568	27068
	2025	3756	2799	2183	1621	1386	1002	1231	1420	1357	2598	2474	1788	23615
Spain	2021	57	30	54	104	25	3	13	57	73	238	262	235	1151
	2022	151	183	356	940	330	224	705	910	911	2096	956	587	8349
	2023	463	540	1183	1172	590	372	826	1588	1218	2353	1404	684	12393
	2024	521	787	1542	1100	675	501	875	1580	1380	2380	1902	725	13968
	2025	425	713	1014	1725	898	490	774	1491	1075	2130	1798	610	13143
Sri Lanka	2021	31	19	40	71	1	3	13	40	39	58	66	82	463
	2022	54	74	175	297	194	203	219	232	573	901	1018	666	4606
	2023	307	2175	3898	747	471	320	484	3858	3011	2507	3227	846	21851
	2024	493	3683	5741	908	511	284	694	4851	4915	3125	4396	626	30227
	2025	407	4502	8883	1027	455	287	598	5956	4616	5534	4831	582	37678
Thailand	2021	36	30	46	44	8	5	6	52	61	90	74	124	576
	2022	121	191	274	617	329	305	430	284	643	1296	2441	3004	9935
	2023	2419	4802	3829	2103	517	442	579	483	720	1289	3962	4533	25678
	2024	4618	4799	4568	1884	627	366	740	436	780	2203	4462	5263	30746
	2025	3218	5681	4982	2042	1227	551	800	902	767	2209	3563	4419	30361

Nationality	Year	Month												Total
		Jan.	Feb.	Mar.	Apr.	May	Jun.	July	Aug.	Sept.	Oct.	Nov.	Dec.	
UK	2021	136	523	664	541	51	58	184	416	438	1382	2026	2261	8680
	2022	1824	2218	4033	5400	2461	2000	3953	2826	3927	7417	5165	3870	45094
	2023	3458	4345	6133	5409	2927	1991	3630	2711	3640	8218	6136	4267	52865
	2024	3276	4571	7241	5390	2802	1971	3806	2764	4493	8017	6610	3824	54765
	2025	3521	5221	5995	6737	3473	2284	3547	2947	5067	8719	7191	4233	58935
USA	2021	877	1115	1693	2733	225	263	816	1237	1848	4721	3785	3541	22854
	2022	3259	3206	4909	7345	7318	8350	5228	4070	7938	11859	7832	5769	77083
	2023	6561	7887	9557	8413	8546	8470	5561	4629	7364	14878	11461	7028	100355
	2024	7048	9088	10763	9948	8528	8280	7864	5614	10084	16024	10980	6996	111217
	2025	8062	10646	11092	10053	9074	9696	6626	6067	9775	13286	11253	7078	112708
Others	2021	1165	1281	2246	3955	453	334	586	1390	2362	4403	4278	3560	26013
	2022	3182	3503	7641	11952	7207	5481	7065	7004	13449	21728	14915	11182	114309
	2023	10056	13206	20524	21633	11249	8419	8911	9376	18085	27090	20433	16217	185199
	2024	12956	16170	23875	24625	15168	9316	9344	10837	19997	30795	24020	16402	213505
	2025	65951	82424	96929	87782	69950	66103	59767	77358	63740	95651	92262	82760	940677
Grand Total	2021	8874	9266	15254	22732	1531	1187	3093	6093	9907	23338	26135	23552	150962
	2022	16975	19856	42152	61589	54093	46957	44462	41304	58314	88582	72653	67932	614869
	2023	55074	73255	99426	98773	77703	72250	57726	67153	91012	117306	108630	96574	1014882
	2024	79101	97423	128167	111382	90205	76733	64598	72717	96302	124391	114496	92033	1147548
	2025	79990	99585	121632	116487	86216	76425	70193	88681	79981	128443	116552	98180	1162365

Source: Department of Immigration, Nepal

**TABLE 2.10: TOURIST ARRIVAL BY ENTRY POINTS (LAND), 2025**

Entry Point	January	February	March	April	May	June	July	August	September	October	November	December	Total
Immigration Office Mohana (Kailali)	1	0	0	0	0	0	0	0	0	0	0	0	1
Immigration Office Jamunah (Banke)	0	0	0	0	0	0	0	0	0	0	1	1	2
Immigration Office Biratnagar (Morang)	25	20	51	6	8	4	3	2	60	12	22	37	250
Immigration Office Gaddachauki (Kanchanpur)	71	95	288	213	127	141	56	62	86	175	133	99	1546
Immigration Office Birgunj (Parsa)	157	220	182	198	132	97	113	67	83	115	100	146	1610
Immigration Office Rasuwagadi (Rasuwa)	341	364	560	1338	2079	3247	686	0	0	0	5	6	8626
Immigration Office Kakarbhitta (Mechi)	1528	1203	945	724	529	444	358	287	189	780	646	1323	8956
Immigration Office Kodari (Sindupalchowk)	478	320	480	540	676	710	3708	6774	4063	2132	1061	609	21551
Immigration Office Belahiya (Bhairahawa)	6764	18261	20687	3928	1270	597	1396	6599	5940	11667	16286	10693	104088
<b>Total</b>	<b>9365</b>	<b>20483</b>	<b>23193</b>	<b>6947</b>	<b>4821</b>	<b>5240</b>	<b>6320</b>	<b>13791</b>	<b>10421</b>	<b>14881</b>	<b>18254</b>	<b>12914</b>	<b>146630</b>

Source: Department of Immigration, Nepal



## PART : III

# LENGTH OF STAY



In 2025, the average length of stay of tourists in Nepal increased compared to previous years. It was 13.3 days in 2024, and in 2025 it rose by 22.9% to 16.34 days. However, it is important to note that the 2024 figure was estimated based on past trends, while from 2025 onward, the data is directly obtained from a centralized electronic Tourism Management Information System, making it more reliable and accurate.

The increase in the average length of stay is an important indicator for the tourism sector. When tourists stay longer, they spend more on hotels, food, transport, and other activities, which directly benefits the economy. This also helps businesses such as hotels, travel agencies, and local service providers to plan better and improve their services.

Although the increase may seem moderate, it shows a positive trend. It suggests that tourists are spending more time exploring Nepal's natural and cultural attractions, which may be the result of improved tourism services and better promotion.

**TABLE 3.1: TOURIST ARRIVAL AND AVERAGE LENGTH OF STAY, 1975-2025**

Year	Number	Average Length of Stay	Year	Number	Average Length of Stay
1975	92,440	13.05	2000	463,646	11.88
1976	105,108	12.41	2001	361,237	11.93
1977	129,329	11.60	2002	275,468	7.92
1978	156,123	11.84	2003	338,132	9.60
1979	162,276	12.02	2004	385,297	13.51
1980	162,897	11.18	2005	375,398	9.09
1981	161,669	10.49	2006	383,926	10.20
1982	175,448	13.33	2007	526,705	11.96
1983	179,405	11.53	2008	500,277	11.78
1984	176,634	11.55	2009	509,956	11.32
1985	180,989	11.30	2010	602,867	12.67
1986	223,331	11.16	2011	736,215	13.12
1987	248,080	11.98	2012	803,092	12.16
1988	265,943	12.00	2013	797,616	12.60
1989	239,945	12.00	2014	790118	12.44
1990	254,885	12.00	2015	538970	13.16
1991	292,995	9.25	2016	753002	13.4
1992	334,353	10.14	2017	940218	12.6
1993	293,567	11.94	2018	1173072	12.4
1994	326,531	10.00	2019	1197191	12.7
1995	363,395	11.27	2020	230085	15.1
1996	393,613	13.50	2021	150962	15.5
1997	421,857	10.49	2022	614869	13.1
1998	463,684	10.76	2023	1014882	13.2
1999	491,504	12.28	2024	1147548	13.3
2025	1162365	16.34*			

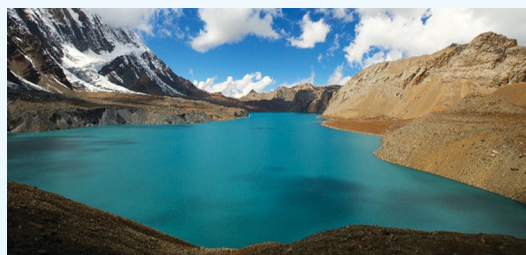
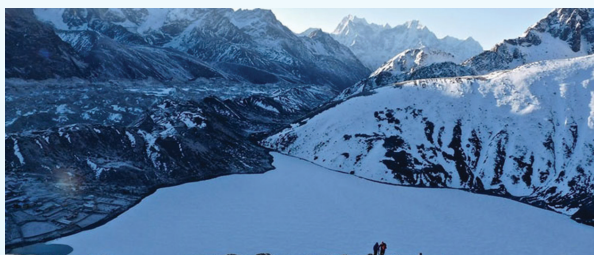
*Source: Department of Immigration, Nepal*

(\* Before 2025, the Average Length of Stay was estimated based on historical trends. From 2025 onward, it is derived from the Centralized Electronic Tourism Management Information System (CETMIS). According to the system, the Average Length of Stay in 2025 is 16.34 days.)



# PART : IV

# PURPOSE OF VISIT



In 2025, the purpose of tourist visits to Nepal shows a gradual shift, indicating changing travel preferences among international visitors. The majority of tourists, 60.2%, visited Nepal for holidays and leisure. Although this remains the largest share, it is slightly lower than the previous year, suggesting that tourism is becoming more diversified beyond traditional sightseeing and vacation travel.

Adventure tourism continues to play a significant role, with 14.2% of visitors coming for activities such as trekking and mountaineering. This is slightly lower

than in 2024, but it still confirms Nepal's strong position as a global destination for mountain and outdoor tourism.

Similarly, pilgrimage tourism accounted for 14.4% of total visits in 2025, decreasing from 15.3% in 2024. Despite this decline, Nepal remains an important religious destination, with major sites like Lumbini, Pashupatinath Temple, and Muktinath Temple continuing to attract pilgrims from around the world.

Other purposes of visit—including business, medical travel, and visiting friends and relatives—made up 11.2% of total arrivals, increasing from 9.8% in 2024. This rise shows that Nepal is gradually expanding as a destination not only for tourism but also for other types of travel.

Overall, these changes indicate that Nepal's tourism sector is becoming more diverse. While leisure tourism still dominates, the growth in other segments highlights new opportunities. Understanding these trends can help in better planning, improving services, and promoting different types of tourism, ultimately supporting sustainable growth and greater economic benefits.

**TABLE 4.1: TOURIST ARRIVAL BY PURPOSE OF VISIT, 1993-2025**

Year	Holiday Pleasure	Trekking & Mountaineering	Business	Pilgrimage	Official	Conv./ Conf.	Others	Not Specified	Total
1993	170279	69619	19495	10429	15812	5367	2566	-	293567
	(58.00)	(23.70)	(6.60)	(3.60)	(5.40)	(1.80)	(0.90)		(100.00)
1994	168155	76865	23522	5475	20431	5361	26722	-	326531
	(51.50)	(23.50)	(7.20)	(1.70)	(6.30)	(1.60)	(8.20)		(100.00)
1995	183207	84787	21829	5257	20090	5272	42953	-	363395
	(50.40)	(23.30)	(6.00)	(1.40)	(5.50)	(1.50)	(11.80)		(100.00)
1996	209377	88945	25079	4802	20191	6054	39165	-	393613
	(53.20)	(22.60)	(6.40)	(1.20)	(5.10)	(1.50)	(10.00)		(100.00)
1997	249360	91525	27409	4068	24106	5824	19565	-	421857
	(59.10)	(21.70)	(6.50)	(1.00)	(5.70)	(1.40)	(4.60)		(100.00)
1998	261347	112644	24954	16164	22123	5181	21271	-	463684
	(56.40)	(24.30)	(5.40)	(3.50)	(4.80)	(1.10)	(4.60)		(100.00)
1999	290862	107960	23813	19198	24132	5965	19574	-	491504
	(59.20)	(22.00)	(4.80)	(3.90)	(4.90)	(1.20)	(4.00)		(100.00)
2000	255889	118780	29454	15801	20832	5599	17291	-	463646
	(55.20)	(25.60)	(6.40)	(3.40)	(4.50)	(1.20)	(3.70)		(100.00)
2001	187022	100828	18528	13816	18727	0	22316	-	361237
	(51.80)	(27.90)	(5.10)	(3.80)	(5.20)	0.00	(6.20)		(100.00)
2002	110143	59279	16990	12366	17783	0	58907	-	275468
	(40.00)	(21.50)	(6.20)	(4.50)	(6.50)	0.00	(21.40)		(100.00)
2003	97904	65721	19387	21395	21967	0	111758	-	338132
	(29.00)	(19.40)	(5.70)	(6.30)	(6.50)	0.00	(33.10)		(100.00)
2005	160259	61488	21992	47621	16859	0	67179		375398
	(42.70)	(16.40)	(5.90)	(12.70)	(4.50)	0.00	(17.9)		(100.00)
2006	145802	66931	21066	59298	18063	0	72766	-	383926
	(27.70)	(12.70)	(4.00)	(11.30)	(3.40)	0.00	(13.80)		(100.00)
2007	217815	101320	24487	52594	21670	8019	78644	22156	526705
	(41.40)	(19.20)	(4.60)	(10.00)	(4.10)	(1.50)	(14.90)	(4.20)	(100.00)
2008	148180	104822	23039	45091	43044	6938	99634	29529	500277
	(29.60)	(21.00)	(4.60)	(9.00)	(8.60)	(1.40)	(19.90)	(5.90)	(100.00)
2009	140992	132929	22758	51542	24518	9985	87134	40098	509956
	(27.60)	(26.10)	(4.50)	(10.10)	(4.80)	(2.00)	(17.10)	(7.90)	(100.00)

Year	Holiday Pleasure	Trekking & Mountaineering	Business	Pilgrimage	Official	Conv./ Conf.	Others	Not Specified	Total
2010	263938	70218	21377	101335	26374	9627	52347	57651	602867
	(43.80)	(11.60)	(3.50)	(16.80)	(4.40)	(1.60)	(8.70)	(9.60)	(100.00)
2011	425721	86260	17859	63783	24054	10836	37311	70391	736215
	(57.80)	(11.70)	(2.40)	(8.70)	(3.30)	(1.50)	(5.10)	(9.60)	(100.00)
2012	379627	105015	24785	109854	30460	13646	48540	91165	803092
	(47.30)	(13.10)	(3.10)	(13.70)	(3.80)	(1.70)	(6.00)	(11.40)	(100.00)
2013	437891	97309	30309	40678	39881	15952	62214	73381	797616
	(54.90)	(12.20)	(3.80)	(5.10)	(5.00)	(2.00)	(7.80)	(9.20)	(100.00)
2014	395849	97185	24494	98765	32395	13432	53728	74271	790118
	(50.10)	(12.30)	(3.10)	(12.50)	(4.10)	(1.70)	(6.80)	(9.40)	(100.00)
2015	3,86,065	9162	20876	14996	21479	9038	77354		538970
	(71.63)	(1.70)	(3.87)	(2.78)	(3.99)	(1.68)	14.35))		(100.00)
2016	489451	66490	24322	82830	21310	12801	55797		753002
	(65.00)	(8.83)	(3.23)	(11.00)	(2.83)	(1.70)	(7.41)		(100.00)
2017	658153	75217		141033			65815		940218
	(70.00)	(8.00)		(15.00)			(7.00)		(100.00)
2018	703843	187692		169180			112357		1173072
	(60.00)	(16.00)		(14.40)			(9.60)		(100.00)
2019	778173	197786		171937			49301		1197191
	(65.00)	(16.52)		(14.36)			(4.12)		(100.00)
2020	139202.00	28530.00		35893.00			26460.00		230085.00
	(60.50)	(12.40)		(15.60)			(11.50)		(100.00)
2021	100843	15549		11172			23398		150962
	(66.80)	(10.30)		(7.40)			(15.50)		(100.00)
2022	397820	61701		79146			76202		614869
	64.70	10.00		12.90			12.40		(100.00)
2023	634301	154262		132949			93370		1014882
	(62.50)	(15.20)		(13.10)			(9.20)		(100.00)
2024	693119	166394		175575			112460		1147548
	(60.40)	(14.50)		(15.30)			(9.80)		(100.00)
2025	699744	165056		167380			130185		1162365
	(60.20)	(14.20)		(14.40)			(11.20)		(100.00)

**CHART 6: TOURIST ARRIVAL BY PURPOSE OF VISIT, 2025 (%)**





# PART : V

## TREKKING & EXPEDITION



In 2025, Nepal's adventure tourism sector demonstrated strong growth, reinforcing its status as a leading global destination for mountaineering and trekking. Famous mountains like Mount Everest continued to attract climbers and adventure lovers from around the world. In 2025, a total of 334 expedition teams were allowed, which is about 12.84 percent more than in 2024. The number of members of the teams also increased to 2,766, showing a growth of 17.05 percent. This shows that more people from around the world are interested in Nepal's mountain climbing and other adventure activities like trekking and paragliding.

Trekking is still one of the main adventure activities in Nepal. In 2025, Nepal welcomed 1,162,365 international tourists, and among them, 165,056 went trekking. Popular trekking areas like the Annapurna Region, Khumbu Region, and Langtang National Park remained top choices, offering beautiful scenery, cultural experiences, and trails for both easy and difficult treks

The growth of adventure tourism has led to more investment in tourism facilities. Trekking trails have been improved, tea houses and lodges have been upgraded, and transportation to remote areas has become better. This has made travel easier and more comfortable for visitors. As a result, Nepal can now welcome all types of tourists, from serious climbers to people who just want to enjoy easy trekking.

At the same time, the Government of Nepal and tourism groups are focusing on protecting the environment. They are improving waste management in trekking areas, promoting eco-friendly lodges, and encouraging tourists to travel responsibly. These efforts help protect Nepal's natural beauty while supporting the long-term growth of adventure tourism.

Overall, the 2025 data shows that adventure tourism in Nepal is growing well. More people from around the world are visiting, facilities are improving, and there is a stronger focus on protecting the environment.

**TABLE 5.1: NUMBERS OF TREKKERS VIA TIMS CARDS BY MONTH, 2025****TIMS CARD DETAILS**  
**1-Jan-2025 to 31-Dec-2025**

Month	GROUP TREKKERS(GT)		Child	TOTAL
	Non SAARC Nationals	SAARC Nationals		
January	184	5	-	189
February	304	3	-	307
March	693	6	-	699
April	704	5	-	709
May	111	-	-	111
June	24	-	2	26
July	6	-	-	6
August	16	-	-	16
September	181	1	-	182
October	469	-	-	469
November	188	5	-	193
December	79	21	0	100
Total	2,959	46	2	3,007

*Source: Nepal Tourism Board*

**Table 5.2 : NUMBER OF TREKKERS IN DIFFERENT TREKKING AREA,  
2013-2025**

Year	Mustang	Lower Dolpa	Upper Dolpa	Humla	Manaslu	Kanchanjunga	Gorkha T.Valley	Narphu	Others	Total
2,013	2,862	585	338	1,603	4,439	837	1,179	862	232	12,937
2,014	3,883	1,117	469	492	3,764	777	1,454	776	2,333	15,065
2,015	2,673	788	328	1,346	2,134	731	636	770	273	9,679
2,016	3,984	1,023	531	10,105	4,650	502	1,219	903	356	23,569
2,017	4,240	924	425	13,398	6,632	479	1,681	1,115	1,099	29,993
2,018	4,116	1,222	525	10,814	7,371	970	2,030	1,291	537	28,876
2,019	3,739	1,263	1,530	8,670	6,070	911	1,393	1,066	437	24,079
2,020	62	12	1	22	360	55	138	17	25	692
2,021	362	168	75	148	908	137	152	259	117	2,326
2,022	3,387	786	492	1,442	5,890	858	1,279	1,194	453	15,781
2,023	1,198	365	145	178	3,094	405	753	512	204	6,854
2,024	5,614	1,348	657	1,045	12,810	1,902	2,567	1,925	1,026	28,894
2,025	4,178	1,092	281	770	14,720	1,680	2,513	1,672	625	27,531

*Source: Department of Immigration, Nepal*

**TABLE 5.3: TREKKERS IN RESTRICTED AREAS BY MONTH, 2025**

TrekkingRoute	MONTH												
	Jan.	Feb.	March	April	May	June	July	Aug.	Sept.	Oct.	Nov.	Dec.	Total
Gorkha Manasalu	39	180	1,733	2,790	755	69	19	146	1,775	4,336	2,660	218	14,720
Upper Mustang	29	96	363	638	770	168	164	355	371	752	432	40	4,178
Gorkha Tsum Valley	28	34	328	474	131	17	9	3	201	834	415	39	2,513
Sankhuwasabha All Restricted Areas	12	29	25	47	12	5	2	2	9	53	53	6	255
Mugu	4	6	2	6	8	2	0	8	21	12	7	0	76
Manang Nar Phu	4	12	116	228	72	28	23	35	223	682	231	18	1,672
Taplejung Kanchanjaingha	2	11	143	316	60	7	0	8	173	691	255	14	1,680
Lower Dolpa	1	7	51	106	94	20	60	114	330	234	66	9	1,092
Humla	0	0	38	32	48	62	288	81	154	22	26	19	770
Dolakha	0	0	22	66	2	2	0	0	16	89	72	5	274
Upper Dolpa	0	0	4	21	24	6	20	59	112	31	4	0	281
Bajhang	0	0	0	0	0	0	2	0	2	3	0	4	11
Darchula	0	0	0	0	0	0	1	0	0	4	4	0	9
<b>Total</b>	<b>119</b>	<b>375</b>	<b>2,825</b>	<b>4,724</b>	<b>1,976</b>	<b>386</b>	<b>588</b>	<b>811</b>	<b>3,387</b>	<b>7,743</b>	<b>4,225</b>	<b>372</b>	<b>27,531</b>

Source: Department of Immigration., Nepal

**Table 5.4: NUMBER OF FOREIGNERS VISITED AT NATIONAL PARKS & CONSERVATION AREAS, 2025**

Conservation Area	Jan.	Feb.	March	April	May	June	July	Ag.	Sept.	Oct.	Nov.	Dec.	Total
Chitwan National Park	7,458	10,292	13,797	11,996	9,460	3,833	3,042	4,275	7,676	13,143	10,870	8,062	<b>103,904</b>
Bardiya National Park	355	915	1,750	1,102	668	262	17	77	586	1,463	1,014	543	<b>8,752</b>
Lamtang National Park	334	616	1,324	1,851	502	126	92	283	1,306	2,672	1,049	482	<b>10,637</b>
Rara National Park	25	5	23	44	27	73	0	0	10	54	53	10	<b>324</b>
Banke National Park	0	0	0	3	0	0	0	4	0	5	11	60	<b>83</b>
Sagarmatha National Park	781	2,137	9,368	9,927	1,784	221	176	1,229	8,186	10,345	2,336	1,034	<b>47,524</b>
Shy-Phoksundo National Park	13	5	3	74	89	89	0	0	0	0	31	0	<b>304</b>
Shivpuri Nagarjun National Park	732	950	1,300	1,072	950	860	387	687	758	1,814	1,594	702	<b>11,806</b>
Makalu Barun National Park	0	4	215	334	86	94	2	50	377	935	21	0	<b>2,118</b>
Khaptad National Park	2	4	3	3	17	0	0	5	0	3	3	2	<b>42</b>
Shuklaphanta Wildlife Reserve	20	65	59	89	31	24	0	0	0	46	37	180	<b>551</b>
Parsa Wildlife Reserve	11	7	0	12	6	0	0	0	0	0	3	6	<b>45</b>
Koshi Tappu Wildlife Reserve	31	30	87	67	20	36	3	5	6	24	43	2	<b>354</b>
Dhorpatan Hunting Reserve	14	15	64	36	13	1	0	2	40	24	15	2	<b>226</b>
Krishnasar Conservation Area	3	23	22	19	4	4	2	0	1	24	1	7	<b>110</b>
Apinappa Conservation Area	0	0	0	4	7	0	0	1	0	0	6	0	<b>18</b>
Kanchanjunga Conservation Area	0	12	192	195	15	2	0	14	285	605	64	0	<b>1,384</b>
Manaslu Conservation Area	1	668	939	1,914	208	26	70	779	1,336	4,106	577	128	<b>10,752</b>
Guorishankar Conservation Area	28	99	305	235	31	93	3	70	227	477	58	51	<b>1,677</b>
Annapurna Conservation Area	8,424	18,126	39,135	46,169	33,873	24,181	13,005	16,587	26,100	38,607	19,234	30,108	<b>313,549</b>
<b>Grand Total</b>	<b>18,232</b>	<b>33,973</b>	<b>68,586</b>	<b>75,146</b>	<b>47,791</b>	<b>29,925</b>	<b>16,799</b>	<b>24,068</b>	<b>46,894</b>	<b>74,347</b>	<b>37,020</b>	<b>41,379</b>	<b>514,160</b>

Source: Department of National Park and Wildlife Conservation, Kathmandu

**TABLE 5.5: NUMBER OF FOREIGN VISITORS TO NATIONAL PARKS & CONSERVATION AREAS, 2016 to 2025**

Conservation Area	2,016	2,017	2,018	2,019	2,020	2,021	2,022	2,023	2,024	2,025
Chitwan National Park	87,391	139,125	118,621	142,486	92,994	2,819	34,787	101,759	126,905	103,904
Bardiya National Park	10,638	17,959	6,773	8,260	5,506	269	3,395	7,904	8,574	8,752
Langtang National Park	5,016	8,254	10,619	12,132	8,242	342	2,498	7,614	11,180	10,637
Sagarmatha National Park	27,794	45,112	56,303	58,030	32,636	2,461	21,210	52,499	49,372	47,524
Rara National Park	132	201	317	421	256	23	99	274	277	324
SheyPhoksundo National Park	431	535	469	578	426	10	123	533	496	304
Khaptad National Park	21	26	21	67	16	3	22	80	57	42
Makalu Barun National Park	828	1,537	1,252	2,057	1,425	30	516	385	1,111	2,118
ShivapuriNagarjun National Park	NA	NA	16,813	12,496	8,692	642	5,325	11,207	12,679	11,806
Banke National Park	0	4	1	12	8	6	5	14	38	83
Shukla Phata Wildlife Reserve	NA	NA	464	329	172	8	150	261	217	551
KoshiTappu Wildlife Reserve	NA	NA	436	388	198	17	126	255	335	354
Parsa Wildlife Reserve	235	417	95	15	14	5	8	86	68	45
Dhorpatan Hunting Reserve	91	163	119	424	75	20	64	94	119	226
Krishnasar Conservation Area	NA	NA	43	37	34	2	12	50	68	110
ApinappaConsersation Area	29	19	36	38	7	3	16	18	23	18
Kanchanjunga Conservation Area	502	479	821	806	584	42	146	868	1,290	1,384
Annapurna Conservation Area	83,419	144,409	172,720	181,746	103,782	4,921	5,452	107,880	240,141	313,549
Manaslu Conservation Area	2,287	5,745	7,200	7,655	5,388	194	1,642	8,413	10,082	10,752
Gaurishanker Conservation Area	1,840	2,770	2,668	2,528	1,523	30	12	684	1,625	1,677
<b>Total</b>	220,654	366,755	395,791	429,764	260,875	11,847	75,608	300,875	464,653	514,160

Source: Department of National Park and Wildlife Conservation, Kathmandu

**TABLE 5.6: NUMBER OF EXPEDITION TEAM AND MEMBERS PAYING ROYLTY BY PEAKS, 2025  
(Permit issued by Department of Tourism)**

S.N.	Name of Mountains(Peak)	Team	Male	Female	Total	Royalty USD	Royalty NRS
1	Aichyn (6055m)	1	2	0	2	0	0
2	Ama Dablam (6814m)	51	457	146	603	537900	75829560
3	Anidesh Chuli (White Wave) (6808m)	2	4	0	4	1000	141056
4	Annapurna I (8091m)	6	49	17	66	118800	16396902
5	Annapurna IV (7525m)	3	17	7	24	12800	1787485
6	Api (7132m)	1	6	1	7	0	0
7	Ardang (6034m)	1	2	0	2	0	0
8	Asajya Tuppa (6265m)	1	6	0	6	0	0
9	Barun Tse (7129m)	6	42	16	58	23175	3254751
10	Bedding Go (6125m)	1	1	0	1	175	24806
11	Bhrikuti Shail (6361m)	1	8	4	12	2100	296100
12	Bijora Hiun Chuli (6111m)	2	7	1	8	0	0
13	Changla (6563m)	1	6	0	6	600	82110
14	Changla Khang West (6233m)	1	3	0	3	0	0
15	Chhuama Peak I (6366m)	1	1	0	1	35	5000
16	Chhuama Peak II (6325m)	2	2	0	2	210	29483
17	Chhuama Peak III (6268m)	1	3	0	3	525	74401
18	Cho-Oyu (8188m)	1	2	0	2	3000	425100
19	Chukyima Go (6258m)	1	7	0	7	1225	173521
20	Chulu Far East (6038m)	9	44	5	49	4507	637851
21	Chungen Changma (6229m)	1	2	0	2	350	49543
22	Dhaulagiri I (8167m)	8	36	16	52	82800	11553870
23	Dogari Himal (6536m)	1	6	2	8	0	0
24	Dolma Khang (6332m)	2	17	1	18	635	88614
25	Drohmo (6881m)	1	4	0	4	1000	141000
26	Ganachenpo (6378m)	1	2	1	3	1050	147472
27	Gandharva Chuli (6248m)	1	4	0	4	700	98979
28	Ghenye Liru (6571m)	1	2	0	2	800	110120
29	Ghyun Himal II (6029m)	1	2	0	2	350	49543
30	Gyaji Khang (7074m)	1	6	2	8	3200	452800
31	Gyalzen Peak (6151m)	1	6	0	6	1050	148680
32	Himlung Himal (7126m)	23	177	55	232	82725	11657140
33	Jugal 2 (6518m)	1	2	0	2	500	70375
34	Jugal 3 (6184m)	3	5	2	7	1450	200733
35	Jugal 4 (5936m)	2	4	0	4	700	99138

S.N.	Name of Mountains(Peak)	Team	Male	Female	Total	Royalty USD	Royalty NRS
36	Jugal 5 (5922m)	2	6	3	9	1875	260413
37	Kabru (7318m)	1	2	1	3	1500	205125
38	Kambong Peak (6570m)	1	2	1	3	300	41490
39	Kanchenjunga (Main) (8586m)	8	58	20	78	100800	13740390
40	Kangbachen (7902m)	1	2	1	3	1800	246150
41	Kanti Central (6275m)	1	5	0	5	0	0
42	Khangri Shar (6811m)	1	2	0	2	500	70225
43	Khatang (6790m)	1	3	0	3	750	105488
44	Khayang (6186m)	2	3	0	3	233	32483
45	Kogi Khang (6095m)	1	5	0	5	0	0
46	Kumbhakarna (Jannu) (7710m)	2	5	0	5	2800	380840
47	Lamjung Himal (6983m)	1	3	0	3	750	106313
48	Langdak (6220m)	1	5	1	6	1050	148838
49	Langdung (6326m)	1	7	0	7	1225	173521
50	Langtang Lirung (7234m)	1	7	0	7	2800	396480
51	Lhayul Peak (6395m)	1	15	0	15	0	0
52	Lhotse (8516m)	13	102	27	129	235200	32157690
53	Lingtren (6713m)	1	3	3	6	2400	329040
54	Makalu I (8463m)	10	64	19	83	146700	20083185
55	Malanphulan (6573m)	1	2	0	2	500	70225
56	Manaslu (8163m)	32	282	95	377	1123350	157825078
57	Mukot Himal (6087m)	2	5	1	6	840	118336
58	Norbu Khang (6085m)	1	3	1	4	280	38222
59	Numbur (6958m)	1	3	0	3	750	106237
60	Numri (6635m)	1	2	0	2	500	70875
61	Nuptse (7855m)	7	65	22	87	51100	6991140
62	Panbari (6887m)	1	3	0	3	750	106313
63	Pathibhara South East (6868m)	1	1	0	1	250	35113
64	Peri Himal (6296m)	2	12	4	16	2800	396760
65	Pokhar Khang (6372m)	1	2	2	4	1000	139500
66	Pumori (7161m)	2	6	0	6	2800	388700
67	Putha Hiunchuli (7246m)	4	21	2	23	9600	1353998
68	Ratna Chuli (7128m)	1	4	6	10	4000	566800
69	Sagarmatha (8848.86m)	49	386	86	472	5083952	695484193
70	Saribung (6346m)	11	27	16	43	7675	1081603

S.N.	Name of Mountains(Peak)	Team	Male	Female	Total	Royalty USD	Royalty NRS
71	Saula (6235m)	1	3	0	3	750	103238
72	Sharphu IV (6433m)	1	1	0	1	250	34875
73	Swelokhan (6180m)	1	0	1	1	250	34288
74	Tengkangpoche (6482m)	1	2	0	2	700	98385
75	Tengkoma (6215m)	1	4	1	5	875	123550
76	Thapa Peak (Dhampus) (6012m)	9	36	23	59	12225	1697788
77	Thorong Peak (6144m)	11	31	9	40	11675	1232112
78	Yoko Pahar (Nampa VIII) (6423m)	1	1	0	1	70	9657
<b>Total</b>	<b>334</b>	<b>2145</b>	<b>621</b>	<b>2766</b>	<b>7700986.221</b>	<b>1060610781</b>	

*Source: Department of Tourism, Nepal*

## 5.7: NUMBER OF NO SUCCESS AND SUCCESS MEMBERS BY COUNTRY AND GENDER, 2025

S. N.	Name of Country	Female		Total Female Permitted	Male		Total Male Permitted	Total No Success	Total Success	Grand Total
		No Success	Success		No Success	Success				
1	Albania		1	1				0	1	1
2	Algeria				1		1	1	0	1
3	American Samoa (USA)		2	2	3	1	4	3	3	6
4	Andorra					1	1	0	1	1
5	Argentina	1	1	2	4	4	8	5	5	10
6	Armenia				1		1	1	0	1
7	Australia	14	2	16	30	19	49	44	21	65
8	Austria	6	6	12	26	15	41	32	21	53
9	Azerbaijan		2	2	1	1	2	1	3	4
10	Bangladesh	2	1	3	5	6	11	7	7	14
11	Belarus				1	1	2	1	1	2
12	Belgium	3		3	9	2	11	12	2	14
13	Bosnia and Herzegovina					1	1	0	1	1
14	Brazil	4	2	6	17	1	18	21	3	24
15	British Virgin Islands (UK)				3		3	3	0	3
16	Bulgaria	5	1	6	5	2	7	10	3	13
17	Canada	11	10	21	22	14	36	33	24	57
18	Chile		1	1	2	2	4	2	3	5
19	China	17	42	59	41	109	150	58	151	209
20	Colombia		2	2				0	2	2
21	Costa Rica	1	1	2				1	1	2
22	Croatia		2	2	1		1	1	2	3
23	Cyprus	3		3		1	1	3	1	4
24	Czech Republic	4	7	11	11	13	24	15	20	35
25	Denmark	3	1	4	6	3	9	9	4	13

S. N.	Name of Country	Female		Total Female Permitted	Male		Total Male Permitted	Total No Success	Total Success	Grand Total
		No Success	Success		No Success	Success				
26	Ecuador				9	5	14	9	5	14
27	Egypt					1	1	0	1	1
28	Estonia	1	2	3	2	5	7	3	7	10
29	Finland	2	4	6	2	2	4	4	6	10
30	France	23	6	29	85	39	124	108	45	153
31	Georgia	1	1	2	3		3	4	1	5
32	Germany	18	12	30	57	34	91	75	46	121
33	Greece				5		5	5	0	5
34	Hungary		2	2	8	1	9	8	3	11
35	Iceland				1	1	2	1	1	2
36	India	14	20	34	62	74	136	76	94	170
37	Indonesia		1	1		1	1	0	2	2
38	Iran		3	3	3	13	16	3	16	19
39	Ireland	1		1	14	3	17	15	3	18
40	Israel	1	2	3	8	6	14	9	8	17
41	Italy	6	1	7	27	6	33	33	7	40
42	Japan	15	3	18	30	18	48	45	21	66
43	Jordan					1	1	0	1	1
44	Kazakhstan	1	2	3	7	3	10	8	5	13
45	Kenya	1		1	2		2	3	0	3
46	Kuwait				1	1	2	1	1	2
47	Kyrgyzstan	1	1	2	1		1	2	1	3
48	Latvia				3	3	6	3	3	6
49	Lebanon		2	2	1		1	1	2	3
50	Lithuania	2		2	4	4	8	6	4	10
51	Macedonia					2	2	0	2	2
52	Malaysia	1		1	1	1	2	2	1	3
53	Malta				1	1	2	1	1	2
54	Mexico		2	2	3	7	10	3	9	12

S. N.	Name of Country	Female		Total Female Permitted	Male		Total Male Permitted	Total No Success	Total Success	Grand Total
		No Success	Success		No Success	Success				
55	Moldov		1	1				0	1	1
56	Mongolia	1	2	3	1	1	2	2	3	5
57	Montenegro		1	1				0	1	1
58	Morocco		1	1		1	1	0	2	2
59	Nepal	2	4	6	59	67	126	61	71	132
60	Netherlands	2	1	3	8	4	12	10	5	15
61	New Zealand	3		3	5	1	6	8	1	9
62	Nigeria				1		1	1	0	1
63	Norway	3	5	8	6	6	12	9	11	20
64	Pakistan		1	1	1	5	6	1	6	7
65	Peru				3	1	4	3	1	4
66	Philippines				4	3	7	4	3	7
67	Poland	13	12	25	50	35	85	63	47	110
68	Portugal	6		6	7		7	13	0	13
69	Qatar		1	1				0	1	1
70	Romania	4	5	9	6	7	13	10	12	22
71	Russia	24	25	49	67	53	120	91	78	169
72	Saudi Arabia				1		1	1	0	1
73	Serbia		4	4		3	3	0	7	7
74	Singapore	8	4	12	4	2	6	12	6	18
75	Slovakia		6	6	3	1	4	3	7	10
76	Slovenia				8	1	9	8	1	9
77	South Africa	2	1	3	1	1	2	3	2	5
78	South Korea	3		3	3	4	7	6	4	10
79	Spain	3	1	4	27	12	39	30	13	43
80	Sri Lanka				2		2	2	0	2
81	Swaziland				1		1	1	0	1
82	Sweden	3	1	4	4	7	11	7	8	15
83	Switzerland	8	6	14	25	4	29	33	10	43

S. N.	Name of Country	Female		Total Female Permitted	Male		Total Male Permitted	Total No Success	Total Success	Grand Total
		No Success	Success		No Success	Success				
84	Taiwan		1	1	4	1	5	4	2	6
85	Turkey		2	2	2		2	2	2	4
86	Ukraine	2	9	11	16	14	30	18	23	41
87	United Arab Emirates				1	1	2	1	1	2
88	United Kingdom	18	8	26	110	42	152	128	50	178
89	United States	34	23	57	113	72	185	147	95	242
90	United States Virgin Islands (USA)				1		1	1	0	1
91	Vietnam	2		2	4	2	6	6	2	8
<b>Grand Total</b>	<b>303</b>	<b>273</b>	<b>576</b>	<b>1077</b>	<b>779</b>	<b>1856</b>	<b>1380</b>	<b>1052</b>	<b>2432</b>	

Source: Department of Tourism, Nepal

**TABLE 5.8: NUMBER OF NO SUCCESS AND SUCCESS MEMBERS BY PEAK AND GENDER, 2025**

S.N.	Name of Peak	Female		Female Total	Male		Male Total	Total No Success	Total Success	Grand Total
		No Success	Success		No Success	Success				
1	Aichyn				1		1	1	0	1
2	Ama Dablam	69	67	136	252	164	416	321	231	552
3	Anidesh Chuli (White Wave)				2		2	2	0	2
4	Annapurna I	11	6	17	29	14	43	40	20	60
5	Annapurna IV	3	2	5	14	2	16	17	4	21
6	Api	1		1	5		5	6	0	6
7	Ardang				1		1	1	0	1
8	Asajya Tuppa				5		5	5	0	5
9	Barun Tse	12	2	14	35	3	38	47	5	52
10	Bhrikuti Shail	4		4	7		7	11	0	11
11	Bijora Hiun Chuli	1		1	5		5	6	0	6
12	Changla				5		5	5	0	5
13	Changla Khang West				2		2	2	0	2
14	Chhuama Peak III					2	2	0	2	2
15	Cho-Oyu				1		1	1	0	1
16	Chukyima Go				6		6	6	0	6
17	Chulu Far East	2	3	5		35	35	2	38	40
18	Chungen Changma				1		1	1	0	1
19	Dhaulagiri I	8	4	12	25	7	32	33	11	44
20	Dogari Himal	2		2	5		5	7	0	7
21	Dolma Khang	1		1	15		15	16	0	16
22	Drohmo				3		3	3	0	3
23	Ganchenpo				2		2	2	0	2
24	Gandharva Chuli				3		3	3	0	3
25	Ghenye Liru				1		1	1	0	1
26	Ghyun Himal II				1		1	1	0	1
27	Gyaji Khang	2		2	5		5	7	0	7
28	Gyalzen Peak				5		5	5	0	5
29	Himlung Himal	34	18	52	102	55	157	136	73	209
30	Jugal 2				1		1	1	0	1
31	Jugal 3	1		1	3		3	4	0	4
32	Jugal 4				2		2	2	0	2
33	Jugal 5	3		3	4		4	7	0	7
34	Kabru	1		1	1		1	2	0	2
35	Kambong Peak	1		1	1		1	2	0	2

S.N.	Name of Peak	Female		Female Total	Male		Male Total	Total No Success	Total Success	Grand Total
		No Success	Success		No Success	Success				
36	Kanchenjunga (Main)	6	12	18	14	38	52	20	50	70
37	Kangbachen	1		1	1		1	2	0	2
38	Kanti Central				4		4	4	0	4
39	Khangri Shar				1		1	1	0	1
40	Khatang				2		2	2	0	2
41	Khayang				1		1	1	0	1
42	Kogi Khang				4		4	4	0	4
43	Kumbhakarna (Jannu)				3		3	3	0	3
44	Lamjung Himal				2		2	2	0	2
45	Langdak	1		1	4		4	5	0	5
46	Langdung				6		6	6	0	6
47	Langtang Lirung				6		6	6	0	6
48	Lhayul Peak				14		14	14	0	14
49	Lhotse	12	14	26	64	26	90	76	40	116
50	Lingtren	3		3	2		2	5	0	5
51	Makalu I	5	14	19	36	18	54	41	32	73
52	Malanphulan				1		1	1	0	1
53	Manaslu	16	73	89	46	210	256	62	283	345
54	Mukot Himal	1		1	2	1	3	3	1	4
55	Norbu Khang	1		1	2		2	3	0	3
56	Numbur				2		2	2	0	2
57	Numri				1		1	1	0	1
58	Nuptse	21		21	56	3	59	77	3	80
59	Panbari				2		2	2	0	2
60	Peri Himal	3		3	11		11	14	0	14
61	Pokhar Khang	2		2	1		1	3	0	3
62	Pumori				4		4	4	0	4
63	Putha Hiunchuli	2		2	10	7	17	12	7	19
64	Ratna Chuli	6		6	3		3	9	0	9
65	Sagarmatha	24	58	82	148	193	341	172	251	423
66	Saribung	13		13	19		19	32	0	32
67	Saula				2		2	2	0	2
68	Tengkangpoche				1		1	1	0	1
69	Tengkoma	1		1	3		3	4	0	4
70	Thapa Peak (Dhampus)	21		21	29		29	50	0	50
71	Thorong Peak	8		8	20	1	21	28	1	29
	<b>Grand Total</b>	<b>303</b>	<b>273</b>	<b>576</b>	<b>1077</b>	<b>779</b>	<b>1856</b>	1380	1052	<b>2432</b>

Source: Department of Tourism, Nepal

**TABLE 5.9: NUMBER OF EXPEDITION COUNTRYWISE TEAM AND MEMBER,  
2025 (Permit issued by Department of Tourism)**

S.N.	Name of Country	Total team	Male	Female	Total
1	American Samoa (USA)	1	7	1	8
2	Argentina	1	8	4	12
3	Australia	7	34	15	49
4	Austria	7	48	9	57
5	Bangladesh	1	1	1	2
6	Bolivia	1	12	3	15
7	Brazil	2	25	4	29
8	Bulgaria	2	14	11	25
9	Canada	9	72	33	105
10	Chile	2	2	0	2
11	China	16	139	50	189
12	Costa Rica	1	9	5	14
13	Czech Republic	7	41	12	53
14	Denmark	3	17	11	28
15	Ecuador	1	5	1	6
16	Estonia	2	21	3	24
17	Finland	1	7	3	10
18	France	25	123	42	165
19	Germany	21	103	41	144
20	India	26	212	49	261
21	Iran	6	37	8	45
22	Ireland	5	32	11	43
23	Italy	7	37	9	46
24	Japan	13	59	10	69
25	Kazakhstan	2	19	6	25
26	Kyrgyzstan	3	20	8	28
27	Latvia	1	8	0	8
28	Mexico	1	3	1	4
29	Mongolia	1	10	3	13
30	Nepal	28	176	14	190
31	Netherlands	4	28	12	40
32	New Zealand	1	9	2	11

S.N.	Name of Country	Total team	Male	Female	Total
33	Norway	2	11	4	15
34	Philippines	1	13	2	15
35	Poland	15	116	41	157
36	Portugal	3	20	13	33
37	Romania	2	25	2	27
38	Russia	9	53	12	65
39	Serbia	1	6	7	13
40	Singapore	1	3	1	4
41	Slovakia	2	4	2	6
42	Slovenia	2	12	5	17
43	South Korea	2	5	1	6
44	Spain	4	12	3	15
45	Sweden	1	2	0	2
46	Switzerland	11	41	20	61
47	Ukraine	3	29	11	40
48	United Kingdom	33	208	59	267
49	United States	32	228	53	281
50	Venezuela	1	8	0	8
<b>51</b>	<b>Vietnam</b>	<b>1</b>	<b>11</b>	<b>3</b>	<b>14</b>
<b>52</b>	<b>Grand Total</b>	<b>334</b>	<b>2145</b>	<b>621</b>	<b>2766</b>

Source: Department of Tourism, Nepal

**TABLE 5.10: MOUNTAIN WISE CLIMBERS AND ROYALTY RECEIVED BY NMA, 2025**  
(Permit Issued by Nepal Mountaineering Association)

S.N.	Peak	Permitted Team	Permitted member		Total Permitted Number	Permitted member		Royalty	Royalty
			Male	Female		Nepali	Foreigner	Rs.	US\$
1	Mt.Chola tse	10	20	5	25		25	...	4,375
2	Mt.Kyazo Ri	22	39	15	54	1	53	4,000	10,250
3	Mt. Phari Lapcha	2	5	0	5		5	...	875
4	Mt.Nirekha	4	5	3	8		8	...	1,550
5	Mt.Langsisa Ri	3	6	0	6		6	...	1,350
6	Mt.Ombigaichen	4	4	1	5		5	...	1,025
7	Mt.Bokta	3	5	2	7		7	...	1,450
8	Mt.Chekigo	0	0	0	0	0	0	...	-
9	Mt.Lobuje West	7	12	4	16		16	...	2,875
10	Mt.Larkya Peak	27	58	15	73	1	72	10,000	13,875
11	Mt.ABI	0	0	0	0	0	0	...	-
12	Mt.Yubra Himal	1	2	0	2		2	...	350
13	Singu Chuli(Fluted Peak)	0	0	0	0	0	0	...	-
14	Hiunchuli	0	0	0	0	0	0	...	-
15	Mera Peak	741	1902	731	2633	59	2574	298,000	521,715
16	Kusum Kanguru	1	2	0	2		2	...	500
17	Kwangde	2	4	0	4		4	...	700
18	Chulu West	30	64	20	84	4	80	23,000	15,845
19	Chulu East	52	86	50	136	5	131	11,250	37,250
20	Imja Tse (Island Peak)	739	1546	532	2078	22	2056	175,000	420,780
21	Pharchoamo	24	42	15	57		57		11,250
22	Lobuje	555	1267	508	1775	35	1740	176,000	367,930
23	Ramdung	5	3	12	15	1	14	10,000	2,750
24	Pisang Peak	14	17	6	23		23	...	4,625
25	Ganja la Chuli (Naya Khanga)	6	21	3	24	7	17	7,000	3,050
26	Khongma Tse (Mehra)	-	-	0	0	0	0	...	-
27	Paldor Peak	4	1	21	22	16	6	80,000	1,350
	<b>Total</b>	<b>2256</b>	<b>5111</b>	<b>1943</b>	<b>7054</b>	<b>151</b>	<b>6903</b>	<b>794,250</b>	<b>1,425,720</b>

Source: Nepal Mountaineering Association (NMA)



# PART : VI

## PILGRIMAGE



Nepal is a well-known pilgrimage destination with a rich history, culture, and many holy places. Its mix of religious traditions and natural beauty attracts both pilgrims and tourists. Two of the most important pilgrimage sites in Nepal are Lumbini and Pashupatinath Temple, which draw large numbers of visitors every year.

Lumbini is the birthplace of Gautama Buddha and is one of the most important sites for Buddhists around the world. It is also listed as a UNESCO World Heritage Site. Important places in Lumbini include the Maya Devi Temple, Ashoka

Pillar, and many monasteries built by different countries. Because of its peaceful environment and religious importance, Lumbini is the most visited pilgrimage site in Nepal by foreign visitors. In 2025, a total of 1,126,419 people visited Lumbini, including 702,910 Nepali visitors, 269,817 visitors from India, and 153,692 visitors from other countries.

Pashupatinath Temple is another major religious site, especially important for Hindus. It is known for its spiritual atmosphere and religious rituals. In 2025, the temple received 122,431 international visitors, showing its importance as a key pilgrimage destination.

Overall, Lumbini and Pashupatinath are important religious sites that attract visitors for worship, peace, and cultural experience. They show Nepal's rich cultural heritage and also play a big role in tourism. The steady number of visitors each year shows how much people from different parts of the world respect and value these holy places.

**TABLE 6.1: VISITORS (EXCLUDING INDIANS CITIZEN) TO PASHUPATINATH  
BY MONTH, 2014-2025**

Month	2014	2015	2016	2017	2018	2019	2020	2021	2022	2023	2024	2025
January	8,592	9,148	5,960	6,673	8,045	9,030	9,899	0	679	4,693	5,963	6,264
February	12,705	13,167	6,207	7,503	10,711	11,525	6,651	0	1,319	6,355	4,553	10,149
March	15,066	14,652	6,463	11,067	16,073	22,250	8,850	0	5,477	12,076	11,243	16,609
April	17,178	15,777	8,567	14,204	22,255	17,890	0	0	5,131	15,248	20,823	21,243
May	10,266	1,685	8,447	8,506	11,214	10,145	0	0	4,443	7,679	13,761	11,719
June	5,590	1,786	7,413	4,319	5,837	6,335	0	0	1,759	4,165	4,026	5,005
July	8,444	3,476	5,604	4,752	6,729	5,842	0	0	1,411	3,385	7,502	4,245
August	12,556	2,501	5,375	7,053	10,658	13,921	0	0	7,026	5,674	7,914	6,955
September	14,758	4,998	8,047	9,835	12,131	13,051	0	0	14,570	5,828	16,028	6,608
October	28,428	3,994	13,091	22,709	27,150	25,287	0	863	4,913	22,619	25,211	23,739
November	21,997	4,197	12,918	18,814	21,926	22,840	0	1,144	5,003	19,735	15,054	2,125
December	10,593	3,299	7,319	8,745	10,582	13,821	0	1,183	3,473	11,074	4,061	7,770
<b>Total</b>	<b>166,173</b>	<b>78,680</b>	<b>95,411</b>	<b>124,180</b>	<b>163,311</b>	<b>171,937</b>	<b>25,400</b>	<b>3,190</b>	<b>55,204</b>	<b>118,531</b>	<b>136,139</b>	<b>122,431</b>

Source: Pashupati Area Development Trust

**TABLE 6.2: INDIAN VISITORS AT LUMBINI, 2014-2025**

Month	2014	2015	2016	2017	2018	2019	2020	2021	2022	2023	2024	2025
Jan.	6,169	6,942	2,835	18,354	12,988	19,168	13,978	1,870	7,775	18,509	18,384	25,256
Feb.	5,900	6,215	3,580	10,577	11,107	12,041	15,141	2,761	7,745	18,115	20,489	20,090
March	6,425	7,932	5,190	9,721	18,986	17,059	6,991	3,842	18,834	24,498	29,269	34,963
April	70,267	77,614	24,975	13,497	16,909	11,643	0	1,500	15,284	23,572	17,022	22,452
May	10,092	8,595	24,233	16,677	11,829	23,377	0		19,687	27,167	38,906	30,569
June	6,998	3,506	12,380	10,693	19,808	19,166	0		25,065	21,318	25,293	23,470
July	3,393	2,873	5,127	7,055	7,544	7,844	0		11,566	10,789	8,946	10,360
August	4,093	1,472	4,313	3,913	7,427	8,457	0	499	11,342	8,024	10,057	11,873
Sep.	5,300	701	5,360	6,641	8,851	8,341	0	1,386	11,044	15,408	13,817	7,409
Oct.	8,334	1,763	9,076	15,985	16,908	20,909	0	6,810	20,817	22,881	28,534	21,301
Nov.	16,142	8,109	28,280	23,233	28,629	29,568	126	9,456	38,689	28,887	32,468	30,072
Dec.	11,103	4,468	8,920	19,098	31,424	27,252	970	15,458	42,565	40,842	43,376	32,002
<b>VVIP, VIP, Gov. Employee</b>	<b>0</b>	<b>72</b>	<b>0</b>	<b>0</b>	<b>1,225</b>	<b>1,346</b>	<b>0</b>	<b>150</b>	<b>450</b>	<b>6,500</b>	<b>14,328</b>	<b>0</b>
<b>Total</b>	<b>154,216</b>	<b>130,262</b>	<b>134,269</b>	<b>155,444</b>	<b>193,635</b>	<b>206,171</b>	<b>37,206</b>	<b>43,732</b>	<b>230,863</b>	<b>266,510</b>	<b>300,889</b>	<b>269,817</b>

Source: Lumbini Development Trust

**TABLE 6.3: THIRD COUNTRY VISITORS (except Indian citizens) AT LUMBINI, 2014– 2025**

Month	2014	2015	2016	2017	2018	2019	2020	2021	2022	2023	2024	2025
January	8,397	10,300	6,970	8,846	9,714	13,619	13,107	32	203	3,987	9,610	8,605
February	17,990	17,965	19,913	23,118	19,795	25,868	21,807	62	306	12,522	14,839	17,725
March	20,109	23,289	21,444	28,511	29,061	29,400	10,529	159	626	12,297	18,026	22,250
April	6,879	7,953	5,245	6,092	8,023	8,650	0	133	770	3,942	5,727	5,784
May	2,563	740	3,106	2,639	2,707	3,228	0	0	782	1,665	2,928	2,790
June	2,125	204	1,585	1,392	1,979	2,390	0	0	607	1,191	1,044	933
July	2,735	1,506	2,929	2,457	2,850	3,376	0	0	681	1,393	1,719	1,812
August	14,154	13,317	18,007	13,032	19,279	14,738	0	24	1,113	3,545	5,769	6,896
September	8,067	4,461	10,941	8,701	12,095	8,627	0	38	1,496	5,406	4,512	5,715
October	16,458	10,860	15,568	16,596	18,218	18,577	0	157	4,118	9,374	9,661	13,760
November	21,111	22,136	19,094	19,041	27,292	26,772	3	352	7,473	16,411	18,539	19,509
December	12,793	16,449	11,451	15,389	18,167	17,838	23	240	5,767	13,499	13,746	12,723
VVIP, VIP, Gov. Employee	0	0	0	0	724	932	2,166	12	250	3,500	5,305	35,190
<b>Total</b>	<b>133,381</b>	<b>129,180</b>	<b>136,253</b>	<b>145,814</b>	<b>169,904</b>	<b>174,015</b>	<b>47,635</b>	<b>1,209</b>	<b>24,192</b>	<b>88,732</b>	<b>111,425</b>	<b>153,692</b>

Source: Lumbini Development Trust.

**TABLE 6.4: NEPALSE VISITORS AT LUMBINI, 2014– 2025**

Month	2014	2015	2016	2017	2018	2019	2020	2021	2022	2023	2024	2025
Jan.	122,732	44,869	37,009	181,780	95,823	110,300	67,942	39,764	41,833	62,553	55,128	126,040
Feb.	56,348	50,674	47,246	130,930	127,193	81,000	64,957	50,539	42,213	46,640	50,399	60,733
March	37,868	36,888	52,578	68,412	80,682	86,743	30,986	66,298	63,427	66,839	61,843	50,354
April	209,932	221,090	127,941	313,948	319,764	247,726	0	36,351	55,875	99,174	66,800	83,695
May	24,753	27,701	161,776	98,963	41,418	154,707	0		86,246	49,062	86,216	92,098
June	16,157	21,208	50,163	40,021	41,767	52,664	0		38,964	31,582	20,293	19,187
July	13,336	20,422	25,760	26,032	31,425	30,291	0		27,040	23,510	15,581	17,590
August	19,168	12,115	24,909	17,017	39,883	32,154	0	5,742	25,398	18,282	20,219	18,841
Sep.	15,723	2,229	28,349	16,579	26,590	22,753	0	17,858	16,917	22,541	14,626	14,088
Oct.	63,397	6,357	105,236	96,269	88,582	104,225	0	53,870	65,764	40,823	28,085	53,582
Nov.	211,766	12,039	166,277	137,757	134,891	127,139	9,685	88,368	82,205	85,857	169,575	87,740
Dec.	111,441	32,088	159,565	123,638	127,526	121,204	27,070	104,452	100,196	92,577	135,035	64,389
VVIP, VIP, Gov. Employee	0	1,172	28,349	0	15,027	7,234	9,393	721	3,000	16,778	36,190	14,573
<b>Total</b>	<b>902,621</b>	<b>488,852</b>	<b>1,015,158</b>	<b>1,251,346</b>	<b>1170571</b>	<b>1178140</b>	<b>210033</b>	<b>463963</b>	<b>649078</b>	<b>656218</b>	<b>759990</b>	<b>702,910</b>

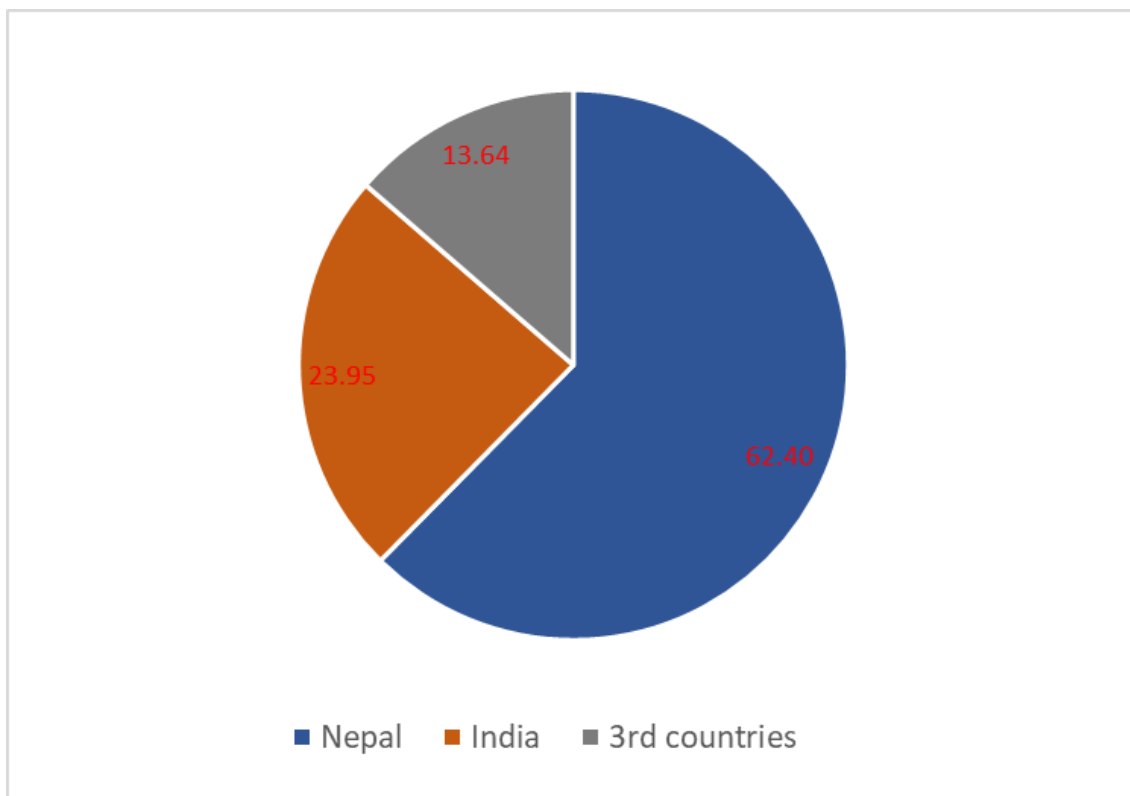
**TABLE 6.5: SUMMARY OF VISITORS BY BROAD ORIGIN IN LUMBINI BY MONTH, 2025**

Country	Jan.	Feb.	March	April	May	June	July	August	Sep.	Oct.	Nov.	Dec.	VVIP, VIP	Total
Nepal	126,040	60,733	50,354	83,695	92,098	19,187	17,590	18,841	14,088	53,582	87,740	64,389	14,573	702,910
India	25,256	20,090	34,963	22,452	30,569	23,470	10,360	11,873	7,409	21,301	30,072	32,002	0	269,817
3rd countries	8,605	17,725	22,250	5,784	2,790	933	1,812	6,896	5,715	13,760	19,509	12,723	35,190	153,692
Total	159,901	98,548	107,567	111,931	125,457	43,590	29,762	37,610	27,212	88,643	137,321	109,114	49,763	1,126,419

**TABLE 6.6: MAJOR 15 COUNTRY-WISE LUMBINI VISITORS (Except Indian Citizens), 2025**

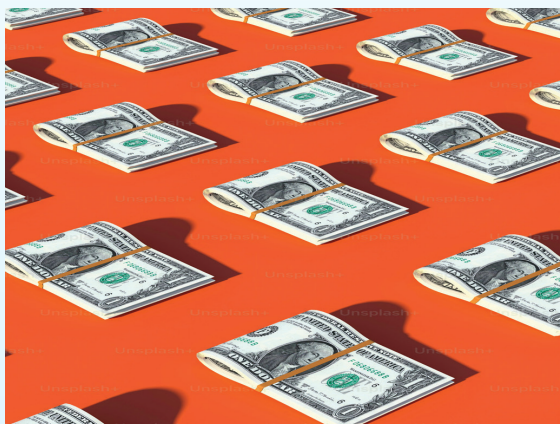
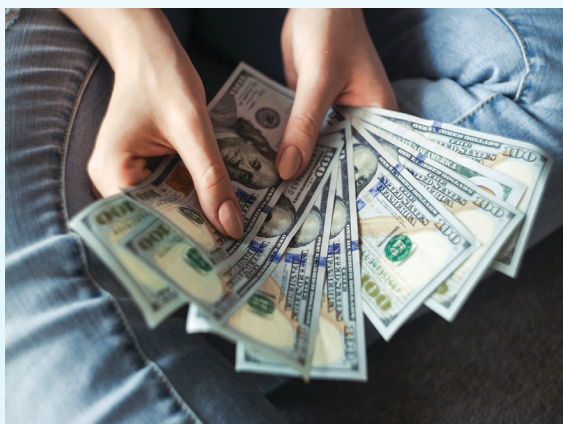
country	Jan.	Feb.	Mar.	April	May	June	July	Aug.	Sep.	Oct.	Nov.	Dec.	Total
Sri Lanka	198	3,684	8,166	655	138	46	358	5,159	4,097	5,109	4,352	325	32,287
Thailand	2,720	4,620	4,202	223	303	53	259	257	131	903	2,665	3,555	19,891
Myanmar	882	2,657	3,408	1,402	34	9	49	31	34	2,577	4,060	3,385	18,528
China	933	1,243	1,304	1,011	921	375	355	577	232	702	1,766	1,370	10,789
Vietnam	208	1,805	1,058	689	242	111	278	148	457	1,183	1,661	775	8,615
South Korea	1,256	826	404	49	54	5	16	38	36	262	518	431	3,895
Germany	179	251	425	176	108	13	18	45	113	429	546	75	2,378
Taiwan	249	369	548	91	141	24	56	99	39	255	255	189	2,315
Malaysia	87	260	257	93	61	10	66	25	22	232	553	446	2,112
Bhutan	970	127	82	20	4	0	4	0	8	20	64	240	1,539
U.S.A.	113	153	252	83	95	47	59	21	45	174	346	137	1,525
Indonesia	42	108	223	41	3	16	40	18	58	60	394	413	1,416
France	37	122	285	192	53	10	9	25	37	252	245	100	1,367
Japan	103	270	218	73	102	49	32	58	53	70	149	83	1,260
U.K.	77	124	221	138	60	17	26	42	77	165	188	80	1,215
Total	8,054	16,619	21,053	4,936	2,319	785	1,625	6,543	5,439	12,393	17,762	11,604	109,132

**CHART 7: VISITORS DISTRIBUTION OF LUMBINI BY BROAD COUNTRY ORIGIN, 2025**



# PART : VII

## INCOME GENERATION



In fiscal year 2081/82, Nepal earned NRs. 88,660.8 million from the tourism sector. This shows that tourism made a strong contribution to the country's economy. The increase in income was mainly due to a higher number of international visitors, better hotel and travel services, and continuous efforts to promote Nepal's cultural and natural attractions.

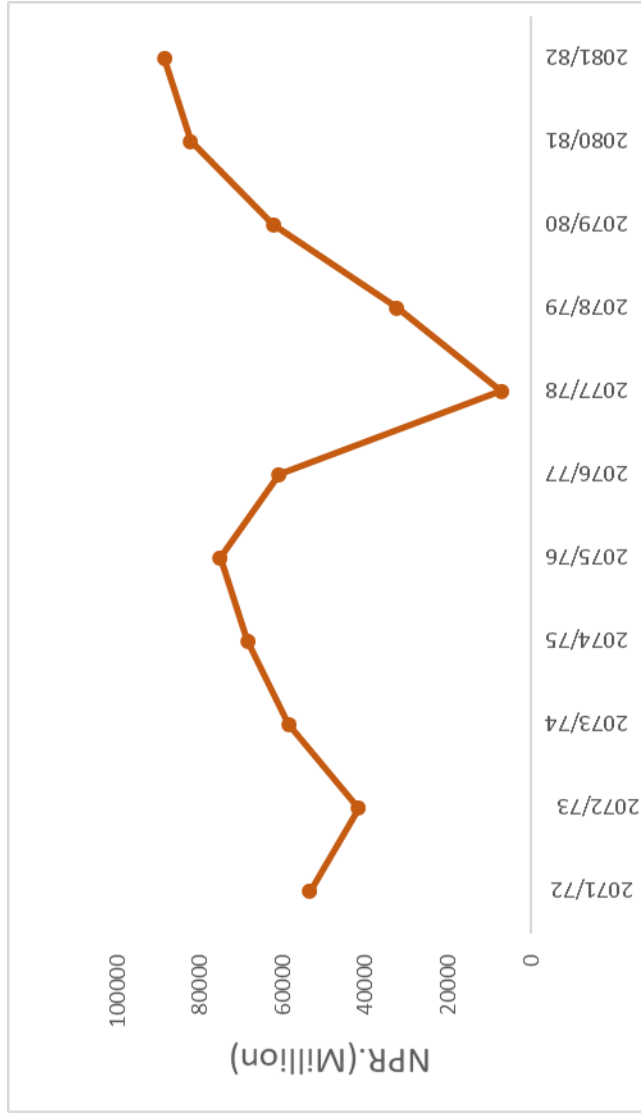
In the first six months of fiscal year 2082/83, Nepal has already earned NRs. 42,205.2 million from tourism. This indicates that tourism income is continuing to grow and the sector is performing well even in the current fiscal year.



**TABLE 7.1: GROSS FOREIGN EXCHANGE EARNINGS FROM TOURISM BY FISCAL YEAR, 2057/58 TO 2082/83\***

Fiscal Year	Total Foreign Exchange Earnings from Tourism			% Change in US\$
	NPR. (Millions)	Annual Average Exchange Rate	US\$ (Million)	
2057/58 (2000/01)	11717	73.8	158.8	-
2058/59 (2001/02)	8654.3	76.9	112.5	-29.1
2059/60 (2002/03)	11747.7	77.8	151	34.2
2060/61 (2003/04)	18147.4	73.8	245.9	62.8
2061/62 (2004/05)	10463.8	72.1	145.1	-41
2062/63 (2005/06)	9555.8	72.3	132.2	-8.9
2063/64 (2006/07)	10125.3	70.5	143.6	8.7
2064/65 (2007/08)	18653.1	65	287	99.8
2065/66 (2008/09)	27959.8	76.9	363.6	26.7
2066/67 (2009/10)	28138.6	74.5	377.7	3.9
2067/68 (2010/11)	24610.7	72.3	340.4	-9.9
2068/69 (2011/12)	30703.8	81	379.1	11.4
2069/70 (2012/13)	34210.6	88	388.8	2.6
2070/71 (2013/14)	46374.9	98.3	471.8	21.4
2071/72 (2014/15)	53428.6	99.5	537	13.8
2072/73 (2015/16)	41765.4	106.4	392.5	-26.9
2073/74 (2016/17)	58526.9	106.2	551.1	40.4
2074/75 (2017/18)	68521.7	104.4	656.3	19.1
2075/76 (2018/19)	75142.8	112.9	665.6	1.4
2076/77 (2019/20)	60885.4	116.3	523.5	-21.3
2077/78 (2020/21)	7266.3	117.9	61.6	-88.2
2078/79 (2021/22)	32447.2	120.8	268.5	335.6
2079/80 (2022/23)	62300.9	130.7	476.5	77.5
2080/81 (2023/24)	82326.6	133	618.8	29.9
2081/82 (2024/25)	88660.8	136.3	650.5	5.1
2082/83 (2025/26)*	42205.2	141.7	297.8	-
<i>Source: Nepal Rastra Bank</i>				
<i>*1st six Months of FY 2082/83</i>				

**CHART 8: GROSS FOREIGN EXCHANGE EARNINGS FROM TOURISM, FY 2071/72 to 2081/82**



Source: Nepal Rastra Bank

**TABLE 7.2: FOREIGN EXCHANGE EARNINGS FROM TOURISM, 2000/01-2024/25**

Fiscal Year	Total foreign exchange earnings from tourism	As % of total value of merchandise exports	As % of total value of merchandise goods and services	As % of total foreign exchange reserves	As % of GDP
2000/01	11717	16.8	11.8	6.6	2.7
2001/02	8654.3	14.9	10.6	5.4	1.9
2002/03	11747.7	23.1	15.2	7.1	2.4
2003/04	18147.4	32.9	20.3	9.9	3.4
2004/05	10463.8	17.5	12.2	5.3	1.8
2005/06	9555.8	15.5	10.9	4.1	1.5
2006/07	10125.3	16.5	10.8	4.1	1.4
2007/08	18653.1	30.1	17.9	6	2.3
2008/09	27959.8	40	22.8	6.9	2.8
2009/10	28138.6	44.5	24.6	6.6	2.4
2010/11	24610.7	35.8	20.2	5.3	1.6
2011/12	30703.8	37.7	20	4.9	1.7
2012/13	34210.6	39.8	18.9	4.8	1.8
2013/14	46374.9	45.9	20.5	5.1	2.1
2014/15	53428.6	54.4	21.6	5.2	2.2
2015/16	41765.4	55.8	19.6	4	1.6
2016/17	58526.9	71.3	24.3	5	1.9
2017/18	68521.7	73.3	25.4	5.6	2
2018/19	75142.8	66.3	25.1	5.4	2
2019/20	60885.4	56.2	23	4.6	1.6
2020/21	7266.3	5.1	3.3	0.5	0.2
2021/22	32447.2	15.3	9.7	2.1	0.7
2022/23	62300.9	33.9	16.6	3.4	1.2
2023/24	82326.6	45.1	18.9	3.8	1.4
2024/25	88660.8	28.7	16.2	3.5	1.5
2025/26*	42205.2	25.1	14.3	2.7	

Source: Nepal Rastra Bank

\*1st Six Months



# PART : VIII

## FLIGHT & PASSENGER MOVEMENT



Nepal's aviation sector is growing fast. Out of 54 airports, 35 are currently in operation. This means most airports are already in use, helping people travel across the country. In addition, one domestic airport and one international airport are under construction, which will further improve air connectivity in the future. However, 19 airports are still inactive and not yet in use.

International air travel is also increasing. At present, 32 international airlines operate in Nepal. These airlines carried almost 5 million passengers in total. Among them, 2,607,185 people traveled from Nepal to other countries, and

2,437,892 passengers arrived in Nepal. This high level of air traffic was supported by around 34,600 flights during the year. Nepal has also signed civil aviation agreements with 42 countries, showing its growing connection with the global aviation network.

Inside the country, domestic air services are also important. Nepal has 20 domestic airline companies, including both airplanes and helicopters. These airlines provide essential transport services across different parts of Nepal, especially in remote and difficult mountainous areas where road travel is hard.

**TABLE 8.1: NUMBER OF INTERNATIONAL FLIGHT AND PASSENGER MOVEMENT (Tribhuvan International Airport) BY MONTH, 2025**

S.N.	MONTH	FLIGHT MOVEMENT			PASSENGER MOVEMENT		
		DEP	ARR	TOTAL	OUT	IN	TOTAL
1	JAN	1,228	1,230	2,458	191,830	195,204	387,034
2	FEB	1,138	1,137	2,275	187,901	185,633	373,534
3	MAR	1,356	1,354	2,710	220,630	203,892	424,522
4	APR	1,446	1,446	2,892	238,511	218,614	457,125
5	MAY	1,491	1,491	2,982	236,593	183,429	420,022
6	JUN	1,378	1,377	2,755	200,021	169,325	369,346
7	JUL	1,368	1,369	2,737	197,268	169,269	366,537
8	AUG	1,408	1,409	2,817	211,047	182,026	393,073
9	SEP	1,585	1,585	3,170	198,012	240,394	438,406
10	OCT	1,730	1,731	3,461	229,613	256,357	485,970
11	NOV	1,640	1,638	3,278	262,941	224,912	487,853
12	DEC	1,532	1,533	3,065	232,818	208,837	441,655
<b>TOTAL</b>		<b>17,300</b>	<b>17,300</b>	<b>34,600</b>	<b>2,607,185</b>	<b>2,437,892</b>	<b>5,045,077</b>

Source: ATSRO (ATS/SAR Division), Terminal Management Division, Air Cargo Service Division T.I.A.C.A.O.

**TABLE 8.2: NUMBER OF INTERNATIONAL FLIGHT & PASSENGER  
MOVEMENT (Tribhuvan International Airport), 2013-2025**

MONTH	FLIGHT MOVEMENT			PAX MOVEMENT		
	DEP	ARR	TOTAL	OUT	IN	TOTAL
<b>2013</b>	11,807	11,812	23,619	1,647,235	1,493,067	<b>3,140,302</b>
<b>2014</b>	13,605	13,603	27,208	1,889,448	1,622,199	<b>3,511,647</b>
<b>2015</b>	13,281	13,283	26,564	1,674,664	1,542,498	<b>3,217,162</b>
<b>2016</b>	13,560	13,558	27,118	1,823,598	1,687,144	<b>3,510,742</b>
<b>2017</b>	16,680	16,682	33,362	2,083,150	1,804,695	<b>3,887,845</b>
<b>2019</b>	16,951	16,946	33,897	2,201,775	2,180,458	<b>4,382,233</b>
<b>2019</b>	16,212	16,213	32,425	2,245,338	1,893,426	<b>4,138,764</b>
<b>2020</b>	5,121	5,135	10,256	539,651	566,207	<b>1,105,858</b>
<b>2021</b>	5,878	5,882	11,760	748,327	708,602	<b>1,456,929</b>
<b>2022</b>	12,154	12,158	24,312	1,931,517	1,556,811	<b>3,488,328</b>
<b>2023</b>	15,730	15,730	31,460	2,420,787	2,120,350	4,541,137
<b>2024</b>	16,620	16,627	33,247	2,607,515	2,355,951	4,963,466
<b>2025</b>	<b>17,300</b>	<b>17,300</b>	<b>34,600</b>	<b>2,607,185</b>	<b>2,437,892</b>	<b>5,045,077</b>

*Source: - Civil Aviation Authority of Nepal*

**TABLE 8.3: INTERNATIONAL AIRLINES WISE FLIGHT AND PASSENGER MOVEMENT, 2025**

S.N.	AIRLINES	FLIGHT MOVEMENT			PASSENGER MOVEMENT		
		DEP	ARR	TOTAL	OUT	IN	TOTAL
1	ABY	861	861	1,722	130,034	131,085	261,119
2	ADY	284	284	568	41,444	45,374	86,818
3	AIC	1,847	1,848	3,695	256,109	243,634	499,743
4	AIQ	258	258	516	35,630	26,834	62,464
5	ALK	205	205	410	27,477	22,713	50,190
6	AXB	212	212	424	26,219	20,738	46,957
7	BBC	444	444	888	57,730	58,352	116,082
8	BHA	186	186	372	8,626	7,973	16,599
9	BTN	365	365	730	16,001	13,070	29,071
10	CCA	321	321	642	34,071	32,214	66,285
11	CES	252	252	504	22,216	23,514	45,730
12	CPA	324	324	648	95,825	77,652	173,488
13	CSC	327	327	654	38,341	33,779	72,131
14	CSN	521	521	1,042	64,582	56,285	120,867
15	DRK	346	346	692	24,022	22,476	46,498
16	FDB	1,311	1,311	2,622	184,835	176,645	363,540
17	HIM	1,771	1,771	3,542	238,450	221,592	474,987
18	IGO	1,362	1,362	2,724	221,588	212,469	434,057
19	JZR	376	376	752	53,087	57,504	110,591
20	KAC	248	248	496	27,988	23,182	51,170
21	KAL	114	114	228	25,427	22,540	47,967
22	MAS	482	482	964	64,623	72,459	137,082
23	MXD	426	426	852	48,326	64,438	112,764
24	NAC	1,759	1,758	3,517	316,342	288,905	606,333
25	NSB	2	4	6	0	0	0
26	QTR	899	899	1,798	224,812	222,011	446,825
27	SEJ	145	145	290	17,320	14,860	32,180
28	SIA	364	364	728	57,224	53,582	110,806
29	THA	724	724	1,448	142,003	106,016	248,025
30	THY	269	269	538	65,398	62,721	128,119
31	TLM	152	152	304	17,073	15,427	32,500
32		5	5	10	241	228	469
33	OTH	138	136	274	5,799	7,620	13,620
	<b>TOTAL</b>	<b>17,300</b>	<b>17,300</b>	<b>34,600</b>	<b>2,588,863</b>	<b>2,437,892</b>	<b>5,045,077</b>

Source: - Civil Aviation Authority of Nepal

LEGEND : ABY - Air Arabia, ADY - Air Arabia Abu Dhabi,AIC - Air India , ALK - Srilankan Airlines, BBC - Biman Bangladesh Airlines, BHA-Buddha air (int.), BTN - Tashi Air Pvt. Ltd. (Bhutan Airlines),CCA – Air China, CES- China Eastern Airlines CPA - Cathy Pacific Airways Limited (Dragon Air),CSC- Sichuan Airlines, CSN - China Southern Airlines,DRK - Druk Air (Royal Bhutan Airlines),FDB - Fly Dubai (Dubai Aviation), HIM - Himalaya Airlines Pvt. Ltd., IGO - Indigo Air (Interglobe Aviation), JZR - Jazeera Airways,KAC-Kuwait Air, KAL - Korean Air, MAS - Malaysian Airlines, MXD - Malindo Air, NAC - Nepal Airlines, NSB - Madhaya Airbase, OMS - Salam Air, QTR - Qatar Airways, SEJ - Spice Jet, SIA - Singapore Airlines, SLK - Silk Air, THA - Thai Airways (Thai Airways International Company Limited), TBA - Tibet Airlines, THD -Thai Smile Airways, THY - Turkish Airlines, TLM-ThaiLionAir,VTI-TataSiaAirlines Ltd(Vistara Air) OTH - Non Schedule/Charter,

Passenger movement is Excluding Transit

**TABLE 8.4: NUMBER OF DOMESTIC FLIGHT & PASSENGER MOVEMENT  
(TIA) 2013-2025**

Year	FLIGHT MOVEMENT			PASSENGER MOVEMENT		
	DEP	ARR	TOTAL	IN	OUT	TOTAL
2013	34,544	34,532	69,076	769,100	773,504	1,542,604
2014	34,270	34,266	68,536	728,857	721,701	1,450,558
2015	32,944	32,921	65,865	683,130	680,918	1,364,048
2016	36,938	36,938	73,876	880,895	876,701	1,757,596
2017	46,563	46,534	93,097	1,250,102	1,138,481	2,388,583
2019	47,788	47,779	95,567	1,472,082	1,375,704	2,847,786
2019	47,307	47,396	94,703	1,711,753	1,595,247	3,307,000
2020	19,306	19,292	38,598	690,419	715,358	1,405,777
2021	40,585	40,587	81,172	1,797,403	1,779,539	3,576,942
2022	103,886	103,849	207,735	4,216,686	5,918,407	10,135,093
2023	48,510	48,479	96,989	2,064,962	2,085,364	4,150,326
2024	51,377	51,352	102,729	2,262,497	2,256,761	4,519,258
2025	51,781	51,775	103,556	2,332,424	2,237,000	4,569,424

Source:- Civil Aviation Authority of Nepal

**TABLE 8.5: NUMBER OF DOMESTIC FLIGHT & PASSENGER MOVEMENT AT  
(TIA) BY MONTH, 2025**

MONTH	FLIGHT MOVEMENT			PASSANGER MOVEMENT		
	DEP	ARR	TOTAL	OUT	IN	TOTAL
JAN	3,166	3,172	6,338	160,113	152,813	312,926
FEB	3,459	3,455	6,914	183,406	174,363	357,769
MAR	4,540	4,524	9,064	204,838	202,937	407,775
APR	4,983	4,986	9,969	213,302	205,464	418,766
MAY	5,055	5,068	10,123	206,899	154,232	361,131
JUN	4,009	4,003	8,012	189,277	195,438	384,715
JUL	3,689	3,686	7,375	173,203	180,760	353,963
AUG	3,573	3,574	7,147	181,620	176,699	358,319
SEP	4,207	4,214	8,421	204,588	151,287	355,875
OCT	5,595	5,590	11,185	219,183	232,444	451,627
NOV	5,433	5,429	10,862	205,688	219,640	425,328
DEC	4,072	4,074	8,146	190,307	190,923	381,230
<b>TOTAL</b>	<b>51,781</b>	<b>51,775</b>	<b>103,556</b>	<b>2,332,424</b>	<b>2,237,000</b>	<b>4,569,424</b>

Source :- Civil Aviation Authority of Nepal

**TABLE 8.6: NUMBER OF DOMESTIC FLIGHT & PASSENGER MOVEMENT  
(excluding TIA), 2025**

S.N	Airport Name	A/C Movement			PASSENGER MOVEMENT		
		In	out	Total	In	Out	Total
1	Nepalgunj	6,715	6,719	13,434	268,602	267,324	535,926
2	Pokhara	13,394	13,390	26,784	427,414	459,370	886,784
3	Gautambuddha	5,965	5,966	11,931	368,464	360,633	729,097
4	Biratnagar	5,845	5,847	11,692	370,039	365,495	735,534
5	Chandragaddhi	3,427	3,436	6,863	188,238	206,800	395,038
6	Bharatpur	2,751	2,751	5,502	112,876	111,865	224,741
7	Janakpur	2,759	4,971	7,730	157,010	146,226	303,236
8	Tenjing-Hilari	16,706	16,714	33,420	51,205	86,002	137,207
9	Simara	2,029	2,029	4,058	115,131	109,241	224,372
10	Surkhet	1,718	1,716	3,434	75,931	74,975	150,906
11	Dhangaddhi	2,514	2,515	5,029	158,064	156,603	314,667
12	Jomsom	1,163	1,165	2,328	19,618	20,002	39,620
13	Simikot	2,789	2,776	5,565	17,397	17,970	35,367
14	Tumlingtara	314	314	628	14,492	15,041	29,533
15	Jumla	595	593	1,188	5,758	6,219	11,977
16	Dolpa	243	243	486	2,603	2,976	5,579
17	Bajura	204	204	408	5,144	5,374	10,518
18	Ramechap	2,089	2,088	4,177	10,847	22,702	33,549
19	Bhojpur	87	87	174	1,512	1,518	3,030
20	Phaplu	767	767	1,534	2,507	2,168	4,675
21	Rara	338	338	676	5,701	5,607	11,308
22	Rukum Sally	148	148	296	1,741	1,899	3,640
23	Rumjatar	49	49	98	307	331	638
24	Taplejung	119	119	238	282	301	583
25	Rajbiraj	373	373	746	20,312	21,058	41,370
26	Safebagar	40	40	80	155	150	305
27	Dang	104	101	205	205	711	916
28	Khanidanda	47	47	94	349	347	696
29	Thamkharka	49	49	98	309	324	633
30	Bajhang	7	7	14	67	60	127
	Total	73,348	75,562	148,910	2,402,280	2,469,292	4,871,572

Source :- Civil Aviation Authority of Nepal

**TABLE 8.7: NUMBER OF DOMESTIC FLIGHT & PASSENGER MOVEMENT BY DOMESTIC AIRLINES, 2025**

S.N.	AIRLINES	FLIGHT MOVEMENT			PASSANGER MOVEMENT		
		DEP	ARR	TOT	OUT	IN	TOT
1	AA	989	988	1,977	2,814	3,144	5,958
2	AD	1,246	1,245	2,491	3,298	3,999	7,297
3	AP	441	441	882	943	1,018	1,961
4	BHA	23,150	23,154	46,304	1,330,697	1,232,494	2,563,191
5	FA	749	748	1,497	2,217	2,479	4,696
6	HE	1,208	1,206	2,414	2,635	3,607	6,242
7	KH	1,148	1,148	2,296	2,799	3,526	6,325
8	MA	875	875	1,750	2,571	2,995	5,566
9	MH	616	616	1,232	1,865	2,351	4,216
10	MU	670	671	1,341	1,802	2,306	4,108
11	MUS	131	131	262	310	362	672
12	NAC	582	582	1,164	5,513	5,494	11,007
13	NSB	556	551	1,107	0	0	0
14	NYT	8,921	8,920	17,841	503,922	505,132	1,009,054
15	SAU	1	1	2	0	0	0
16	SH	254	254	508	760	827	1,587
17	SHA	7,104	7,104	14,208	438,616	431,666	870,282
18	SM	570	569	1,139	1,206	1,594	2,800
19	SMA	833	833	1,666	10,652	12,040	22,692
20	STA	852	852	1,704	8,947	10,249	19,196
21	TRA	885	886	1,771	10,857	11,717	22,574
<b>TOTAL</b>		<b>51,781</b>	<b>51,775</b>	<b>103,556</b>	<b>2,332,424</b>	<b>2,237,000</b>	<b>4,569,424</b>

Source :- ATSTRO (ATS/SAR Division), Domestic T.D.O., Revenue Section (Domestic),T.I.A.C.A.O

LEGEND : AA - Altitude Air Pvt Ltd ,AD - Air Dyanasty Heli Services Pvt. Ltd,AP - Annapurna Helicopter Pvt. Ltd,BHA - Buddha Air Pvt. Ltd,FA - Fishtail Air,GUA - Guna Airlines, HE - Heli Everest Pvt. Ltd, HIM - Himalaya AirlinesPvt. Ltd., KH - Kailash Helicopter Service Pvt Ltd,MA - Manang Air Pvt . Ltd.,MH -Mountain Helicopter Pvt. Ltd,MU - Prabhu Helicopter Pvt. Ltd.,MUS - Mustang Helicopter Pvt .Ltd ,NAC - Nepal Airlines, NSB - Madhaya Airbase, NYT – Yeti Airlines, SAU- Saurya Airlines, SH- Shree Helicopter Pvt. Ltd., SHA- Shree Airlines, SM - Simrik Air, SMA- Summit Air Pvt.Ltd., STA - Sita Air, TRA - Tara Air, VVI- VVIP Flight, OTH- Non Schedule/Charter,

**TABLE 8.8: NUMBER OF INTERNATIONAL FLIGHT & PASSENGER MOVEMENT FROM GOUTAM BUDDHA INTERNATIONAL AIRPORT, BY MONTH, 2025**

MONTH	FLIGHT MOVEMENT			PASSANGER MOVEMENT		
	ARR	DEP	TOTAL	IN	OUT	TOTAL
JAN						
FEB	12	12	24	1,795	1,470	3,265
MAR	68	69	137	3,426	3,608	7,034
APR	3	3	6	178	14	192
MAY	5	5	10	225	226	451
JUNE	2	2	4	0	0	0
JULY	1	1	2	0	0	0
AUG	0	0	0	0	0	0
SEPT	1	1	2	0	0	0
OCT	4	4	8	241	540	781
NOV	14	14	28	460	1,249	1,709
DEC	13	13	26	310	955	1,265
Total	123	124	247	6,635	8,062	14,697



# PART : IX

## TOURISM INDUSTRY



In 2025, Nepal's hospitality and tourism industry continued to grow strongly. The country had 1,605 star and tourist-standard hotels, ranging from luxury to budget options. These hotels together provided around 64,134 beds per day, helping to accommodate a large number of visitors.

The travel service sector also expanded. There were 5,099 travel agencies and 3,332 trekking agencies operating in the country. In addition, Nepal had 98 rafting agencies and 163 tourist transport service providers, which helped support adventure and travel activities across different regions.

The number of tourism professionals also increased. There were 5,466 tour guides, 27,962 trekking guides, 437 river guides, and 490 porter guides working in the sector. These professionals played an important role in helping tourists, improving their experience, and supporting tourism activities across Nepal

**TABLE 9.1: TOURIST STANDARD HOTEL REGISTERED IN NEPAL**

Year	Star Hotel		Tourist Standard Hotel		Total	
	Hotel	Bed	Hotel	Bed	Hotel	Bed
2061	110	10,715	886	28,392	996	39,107
2062	110	10,715	896	28,669	1,006	39,384
2063	105	9,763	502	14,497	607	24,260
2064	105	9,763	512	14,897	617	24,660
2065	96	9,320	573	16,743	669	26,063
2066	97	9,369	647	19,124	744	28,493
2067	103	9,125	686	20,517	789	29,342
2068	106	9,323	721	21,457	827	30,780
2069	107	9,371	746	22,286	853	31,657
2070	117	9,506	909	25,017	1,026	34,523
2071	118	9,554	957	26,625	1,075	36,179
2072	116	9,710	957	27,240	1,073	36,950
2073	120	10,071	985	28,171	1,062	38,242
2074	125	10,697	977	29,136	1,101	39,833
2075	129	11,146	1,125	29,710	1,254	40,856
2076	138	13,200	1,151	30,799	1,289	43,999
2077	142	13,900	1,171	31,950	1,313	45,850
2078	162	15,775	1,183	32,637	1,345	48,412
2079	173	16,335	1,228	37,030	1,401	53,365
2080	182	17,073	1,234	37,297	1,416	54,370
2081	214	20,343	1,364	42,299	1,578	62,642
2082*	222	21,219	1,383	42,915	1,605	64,134

Source: Department of Tourism, Nepal

\*First Eight months and including Str level Boutiik, Heritage and Resort

**TABLE 9.2: TOURIST INDUSTRIES AND GUIDE IN NEPAL**

Year	Travel Agency	Trekking Agency	Rafting Agency	Tourist Transportation Service	Tour Guide	Trekking Guide	River Guide	Porter Guide
2069/70	2,239	1,598	52	31	0	0	100	
2070/71	2,450	1,761	60	50	3,141	9,741	131	
2071/72	2,611	1,903	61	59	3,335	10,436	131	
2072/73	2,768	2,019	66	67	3,507	11,358	187	
2073/74	3,444	2,367	72	72	3,717	13,049	207	
2074/75	3,824	2,637	73	72	3,876	13,831	230	
2075/76	3,508	2,649	73	77	4,126	16,248	253	
2076/77	3,680	2,764	81	82	4,200	17,625	266	
2077/78	3,743	2,797	82	84	4,241	17,766	280	
2078/79	3,801	2,821	87	85	4,557	19,166	324	
2079/80	4,773	3,136	94	92	4,975	25,483	372	
2080/81	4,845	3,191	94	112	5,123	26,292	390	73
2081/82	4,963	3,252	97	155	5,269	27,128	425	351
2082/83*	5,099	3,332	98	163	5,466	27,962	437	490

Source: Department of Tourism, Nepal and Tourism offices

\*First Eight months

**TABLE 9.3: MAJOR CIVIL AVIATION INDICATORS, NEPAL**

Main Indicator	2016	2017	2018	2019	2020	2021	2022	2023	2024	2025
Number of Nepalese Airlines operating international schedule flight	3	3	3	3	3	2	3	3	3	5
Number of International Airlines operating	26	30	29	30	27	20	27	31	31	27
Number of countries Bilateral air services agreement	38	38	39	40	40	41	41	41	42	42
Number of total airlines seats*	8,000,000	8,000,000	8,000,000	8,000,000	8,000,000	8,000,000	8,754,928	8,754,928	8,973,328	9,191,728
Number of Domestic airline Companies operation(both roter& fixed wings)	19	19	19	19	20	20	22	22	22	20
Number of International Airport	1	1	1	1	1	1	3	3	3	3
Number of Fixed Wings Operation	10	10	10	9	9	9	10	10	10	8
Number of Helicopters operation	9	10	10	10	10	11	12	12	12	12
Number of Airports ( Black topped)	26	35	35	35	37	37	41	41	42	42
Number of Airport operation in all seasons	33	30	31	32	35	32	33	33	35	35

Source: Civil Aviation Authority Nepal

\*The number of seats is calculated based on B757 (200 seats). Thus no. of seats varies according to size of aircrafts. Air service agreements are done based on weekly frequencies which can utilized by any type of aircrafts



# PART : X

## TOURISM EDUCATION



The National Academy of Tourism and Hotel Management (NATHM) is a leading public institution in Nepal. It trains skilled workers for the country's growing tourism sector.

Since its establishment, NATHM has helped prepare many students for tourism jobs. From fiscal year 2070/71 to 2081/82, it enrolled:

- 300 students in the Master of Hospitality Management (MHM) program
- 2,190 students in the Bachelor of Hotel Management (BHM) program
- 1,511 students in the Bachelor of Travel and Tourism Management (BTTM) program

These programs help students learn skills for hotels, travel agencies, and tourism services.

Another important institution is the Nepal Mountain Academy. It provides special training for adventure tourism. It offers courses like the Master of Adventure Tourism Studies (MATS) and the Bachelor of Mountaineering Studies (BSM). In 2025, it trained 1,152 students in different tourism and adventure-related programs.

Along with these public institutions, many private colleges in Nepal also offer tourism and hospitality courses. They provide training in hotel management, travel services, and guiding.

**TABLE 10.1: TOURISM AND HOTEL MANAGEMENT RELATED EDUCATION AND TRAININGS 2014-2025**

S.N.	Types of Course	2014	2015	2016	2017	2018	2019	2020	2021	2022	2023	2024	2025	Total
1	Master of Hospitality Management	36	39	40	39	29	33	40	0	15	19	5	5	300
2	Bachelor of Hotel Management	125	168	167	167	167	252	252	252	0	154	243	243	2,190
3	Bachelor of Travel & Tourism Magangent	84	125	126	126	125	168	168	168	0	123	149	149	1,511
4	Food Preparation & Control	146	83	80	70	138	142	42		75	71	88	60	995
5	Food & Beverage Service	33	17	13	9	24	53			0	0	0	0	149
6	Bakery/ Indian Sweets							45	62	11	23	36	47	224
7	Barista Training							8	32	29	23	33	48	173
8	Tourist Guide	312	227	201	174	218	323	26	128	119	144	168	240	2,280
9	Local Guide in Different Areas	18	11	14	114	148	94			0	323	200	25	947
10	Trekking Guide	1,551	1,772	435	800	1,654	1,175	911	262	154	772	749	1,195	11,430
11	Trekking Porter Guide			61	101	181	332	192		18	81	407	276	1,649
12	River Guide/Adventure Tourism	44	66	47	85	51	66	110	34	42	0	69	105	719
13	Hospitality/Household Mgt.	81	51	60	15	41	354	1,282	0	0	32	159	0	2,075
14	Tourism In-service Training	221	105	77	156	112	177	79	137	149	0	0	0	1,213
15	Mobile/Lodge Mgt. /Homestay /Food Safety Training	133	608	540	436	431	501	414	174	366	472	192	157	4,424
16	Liaison Officer										455	446	396	1,297
	<b>Total</b>	<b>2,784</b>	<b>3,272</b>	<b>1,861</b>	<b>2,292</b>	<b>3,319</b>	<b>3,670</b>	<b>3,569</b>	<b>1,249</b>	<b>978</b>	<b>2,692</b>	<b>2,547</b>	<b>2,946</b>	<b>31,179</b>

Source: National Academy of Tourism and Hotel Management (NATHM)

**TABLE 10.2: TOURISM AND MOUNTAINEERING RELATED EDUCATION AND TRAININGS**

Name of training	2024			2025		
	Male	Female	Total	Male	Female	Total
Master of Adventure Tourism Studies	NA	NA	NA	21	3	24
MSc. in Mountain and Mountaineering Science	NA	NA	NA	8	0	8
Bachelor of Mountaineering Studies	NA	NA	NA	26	1	27
Trekking practical training	773	142	915	589	91	680
Liason officer (one day)	431	122	553	338	75	413
Total	1,204	264	1,468	982	170	1,152

*source : Nepal Mountain Academy*

# PART : XI

## MISCELLANEOUS



In fiscal year 2081/82, a total of 436 incidents were reported in the tourism sector. Most of these cases were related to lost or missing belongings, with 386 incidents recorded, showing that many tourists misplaced or lost their items during travel. There were also 21 cases of theft or stolen property, where visitors reported that their belongings were

taken by others. In addition, 8 incidents were related to harassment or disputes, meaning some tourists faced conflicts or uncomfortable situations during their visit. There were 6 cases of fraud or cheating, where tourists were misled or overcharged. Another 5 incidents involved missing persons, where individuals could not be located for a certain period of time. Finally, 10 incidents were recorded under other different reasons that did not fall into the above categories.

Overall, most cases were minor issues like lost items, while a smaller number involved more serious problems such as theft, fraud, or missing persons.

**TABLE 11.1: TOURIST RELATED ACCIDENT/INCIDENT REPORTED BY MONTH, 2081-82**

INCIDENT	Shrawan	Bhadra	Ashoj	Kartik	Mangsir	Poush	Magh	Falgun	Chaitra	Baisakh	Jestha	Ashad	Total
Lost/Missing Items	18	24	28	36	29	26	20	16	57	63	44	25	<b>386</b>
Stolen/theft		5	3	1	2		1	1	4	1	1	2	<b>21</b>
Fraud/Cheating	2				2						2		<b>6</b>
Pickpocket	1				1								<b>2</b>
Damage				1				1					<b>2</b>
Attack/ Assault											1		<b>1</b>
Snatching		1											<b>1</b>
Threat												1	<b>1</b>
Missing Person	1					3				1			<b>5</b>
Misbehaviour			1										<b>1</b>
kidnapping									1				<b>1</b>
Dispute	1	1	1				1	3			1		<b>8</b>
Other											1		<b>1</b>
<b>Total</b>	<b>23</b>	<b>31</b>	<b>33</b>	<b>38</b>	<b>34</b>	<b>29</b>	<b>22</b>	<b>21</b>	<b>62</b>	<b>65</b>	<b>50</b>	<b>28</b>	<b>436</b>

Source: Department of Tourism Nepal/Tourist police

**TABLE: 11.2 TOURIST RELATED ACCIDENT/ INCIDENT FOR THE YEAR FY 2076/077-081/82**

S.N.	INCIDENT	076-077	077-078	078-079	079-080	080-081	2081-82
1	Lost/Missing	390	54	122	345	370	386
2	Stolen/theft	93	9	22	82	57	21
3	Fraud/Cheating	28	8	18	33	15	6
4	Robbery	7	0	1	13	7	0
5	Pickpocket	0	0	0	2	2	2
6	Harassment/dispute	7	3	9	28	20	8
7	Accident	0	0	0	2	2	0
8	Damage	0	0	0	0	0	2
9	Attack/ Assault	3	3	1	2	3	1
10	Snatching	4	0	0	1	0	1
11	Threat	0	0	0	5	1	1
12	Missing Person	7	2	4	4	9	5
13	Misbehavior	0	0	0	1	1	1
14	Kidnap	0	0	0	1	1	1
15	Other	1	0	3	13	0	1
<b>Total</b>		<b>540</b>	<b>79</b>	<b>180</b>	<b>532</b>	<b>488</b>	<b>436</b>

Source: Department of Tourism Nepal/Tourist police

**TABLE: 11.3 TOURIST RELATED ACCIDENT/INCIDENT REPORTED BY NATIONALITY 2081/82**

S.N.	Nationality	Shrawan	Bhadra	Ashoj	Kartik	Mangsir	Poush	Magh	Falgun	Chaitra	Baisakh	Jestha	Ashad	Total
1	Afgan						1							1
2	American (U.S.A)	2	3	2	4	2	2	2		3	5	3		28
3	Australian		1	2	2	2	2	1	2	2	5	2	1	22
4	Argentine											1		1
5	Bangladeshi	1	7	8		4	6	4	2	32	26	10	6	106
6	Belgian		1				1			1				3
7	Bhutanese	1			1	1								3
8	Brazilian	1	1										1	3
9	British (U.K.)	2		3	1		1	1	1	2	3	1	2	17
10	Canadian				1			1		1		1		4
11	Chinese	5	6	5	6	9	2	5	4	11	6	10	8	77
12	Czech				2				1	1				4
13	Dutch (Netherlands)			1	1	3	1			2	4			12
14	Emirates(UAE)								1					1
15	Estonia									1				1
16	French	1			5	1		1	3		2			13
17	German				4		2			3	1		1	11
18	Greece						1							1
19	Indian	4	5	2	1	2	6	1	3		4	6	6	40
20	Iranian				2									2
21	Irish								1					1
22	Israeli		1	1	1		1			1		1		6
23	Italian		1	2		3					1	2	1	10
24	Japanese		2		3	1		3			2		1	12
25	Korean		1	1							1	2		5
26	Malaysian								1					1
27	New Zealander			1										1
28	Norwegian			2										2
29	Oman				1									1
30	Pakistani		1			2						1		4
31	Philipino					1								1
32	Portuguese							1						1
33	Polish	1		1				1	1	1	1	1		7
34	Romanian				1									1

S.N.	Nationality	Shrawan	Bhadra	Ashoj	Kartik	Mangsir	Poush	Magh	Falgun	Chaitra	Baisakh	Jestha	Ashad	Total
35	Russian	1					1			1	1	2	1	7
36	Senegalesh											1		1
37	Singaporean		1		1	1						1		4
38	Slovakian				1	1					1			3
39	Spanish	2				1					1	1		5
40	Srilankan	2							1			1		4
41	Swiss										1	1		2
42	Thai						1							1
43	Tunisia			1										1
44	Turkish											1		1
45	Urugyan											1		1
46	Vietnamese			1			1	1						3
<b>Total</b>		<b>23</b>	<b>31</b>	<b>33</b>	<b>38</b>	<b>34</b>	<b>29</b>	<b>22</b>	<b>21</b>	<b>62</b>	<b>65</b>	<b>50</b>	<b>28</b>	<b>436</b>

Source: Department of Tourism Nepal/Tourist police

**TABLE: 11.4 TOURIST RELATED ACCIDENT/INCIDENT REPORTED BY SEX  
2081/82**

GENDER	Shrawan	Bhadra	Ashoj	Kartik	Mangsir	Paush	Magh	Falgun	Chaitra	Baisakh	Jestha	Ashad	Total
Female	6	7	7	9	10	13	5	6	11	12	15	10	111
Male	17	24	26	29	24	16	17	15	51	53	35	18	325
<b>TOTAL</b>	<b>23</b>	<b>31</b>	<b>33</b>	<b>38</b>	<b>34</b>	<b>29</b>	<b>22</b>	<b>21</b>	<b>62</b>	<b>65</b>	<b>50</b>	<b>28</b>	<b>436</b>

Source: Department of Tourism Nepal/Tourist police

**TABLE: 11.5 COMPLAINTS REGISTERED IN TOURIST POLICE OFFICE  
(2021-2025)**

S.N.	Details	Year				
		2021	2022	2023	2024	2025
1	Lost documents and belongings	68	221	368	353	452
2	Stolen	3	21	97	39	23
3	Fraud/ Cheating	15	20	28	10	4

S.N.	Details	Year				
		2021	2022	2023	2024	2025
4	Missing Person	0	6	2	9	6
5	Harassment	0	4	2	0	0
6	Dispute	6	11	40	8	6
7	Damaged	0	0	0	0	15
8	Robbery/Theft	2	29	10	3	0
9	Threat	0	3	3	0	4
10	Pickpocketing	0	0	0	5	2
11	Misbehaviour	0	0	0	1	0
12	Against Foreigner	0	1	0	0	0
13	Kidnapping	0	0	0	0	1
14	Assault	0	0	0	0	1
15	Others	0	7	14	0	1
<b>Total</b>		<b>94</b>	<b>323</b>	<b>564</b>	<b>428</b>	<b>515</b>

*source: Department of Tourism Nepal/Tourist police*

