

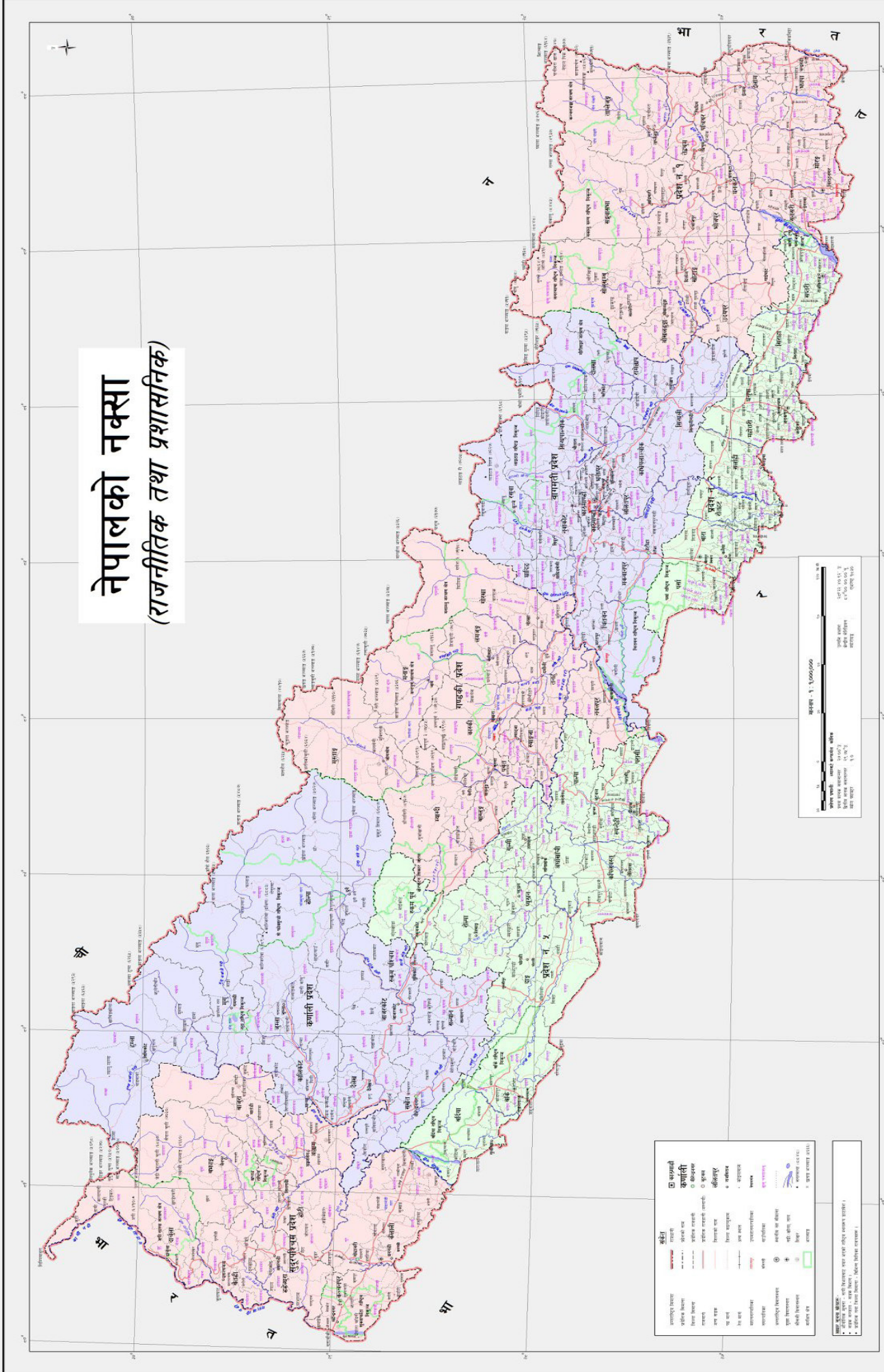
NEPAL POST

ANNUAL REPORT 2023



MAP OF NEPAL

नेपालको नक्सा (राजनीतिक तथा प्रशासनिक)



स्रोत: नेपाल सरकार, राष्ट्रिय नक्शा कार्यालय, काठमाडौं। नक्शा तयार पार्ने मिति: २०७३।

NEPAL POST

ANNUAL

REPORT

2023

Published and Distributed by:

The ministry of Communication and Information Technology

Department of Postal Service

Babarmahal, Kathmandu

Nepal

Disclaimer:

This Annual Report of Nepal reflects our accountability to our great clients, customers, employees and the Nepalese society. It provides basic information about postal services, its performance and activities of Nepal Post.

Patron:

Pradip Raj Adhikari

Director General

Collection and Editing Committee:

Director - Dhruba Raj Acharya

Section Officer - Bishnu Devi Gaire

Section Officer - Dhal Bahadur G.C.

Computer Operator - Dipak Raj Paudel

Graphic Designer

Computer Operator - Sujata Thapa Chhetri

Published and Distributed by:

Department of Postal Service, Babarmahal, Kathmandu

Phone: +977-01-5324116, 5324117

Fax: +977-01-5324143

E-mail: info@nepalpost.gov.np

Website: www.nepalpost.gov.np

All rights reserved: Publisher

Printed by:

Department of Postal Service, Babarmahal, Kathmandu.

ACRONYMS

ADPO	Additional Post Office
APPC	Asian-Pacific Postal College
APO	Area Post Office
APPU	Asian-Pacific Postal Union
DPO	District Post Office
EC	Executive Council
EMS	Express Mail Service
GPO	General Post Office
M	Meter
MoCIT	Ministry of Communication and Information Technology
MOS	Money Order Service
PD	Postal Directorate
PO	Post Office
PSBS	Postal Saving Bank Service
PSNIS	Postal Saving Bank Investment Scheme
SAPU	South Asian Postal Union
UPU	Universal Postal Union

CONTENTS

1. Country Profile Nepal.....	1
2. History of Postal Services of Nepal.....	3
3. A Brief of Nepalese Postal History.....	5
4. Statistical Data of Nepal Post.....	6
5. Organogram of Nepal Post.....	7
6. Proposed Organogram.....	8
7. Province wise break-down of the Postal Outlets of the Year, 2023.....	8
8. Major Statistics of Mail Traffic.....	9
a) Domestic Mail.....	9
i) Domestic Mail Handled.....	9
b) Foreign Mail.....	10
i) Dispatched Foreign Mail.....	10
ii) Receipt of Foreign Mail.....	11
c) International Parcel Service.....	12
i) Number of foreign parcel dispatched and received.....	12
d) International Express Mail Service (EMS).....	12
e) Domestic EMS.....	12
i) Collection and delivery time of EMS.....	13
ii) Domestic EMS Service by Air Route.....	13
iii) Domestic EMS Service by Land Route.....	13
iv) Domestic EMS traffic.....	14
f) International EMS traffic.....	14
9. Post Box Online Service.....	14

CONTENTS

10. Postal Financial Services.....	14
11. Province Wise Offices Providing Postal Financial Service.....	15
12. Present Status of Postal Saving Bank.....	15
13. Financial Status.....	16
14. Human Resource.....	16
15. Current Status of Regular Employees in Nepal Post (2023).....	17
16. Domestic Training Program and Activity 2023.....	18
17. Activity of General Post Office, Kathmandu.....	20
18. Activity of Department of Postal Service, Kathmandu.....	21
19. Issue of Postage Stamps in 2019.....	23
20. Issue of Postage Stamps in 2020.....	24
21. Issue of Postage Stamps in 2021.....	25
22. Issue of Postage Stamps in 2022.....	27
23. International Relations.....	30
24. Agency Functions.....	30
25. Miscellaneous.....	30
26. Postage rates.....	32
a) Inland Tariff Rate.....	32
b) Foreign Postal Tariff Rate.....	36
26. International EMS Rate.....	54
27. Miscellaneous.....	55

COUNTRY PROFILE : NEPAL

Nepal, officially known as the Federal Democratic Republic of Nepal, is a landlocked country located in South Asia bordered by People's Republic of China to the north and Republic of India to the South, East and West. It is mainly situated in the Himalayas but also includes part of the Indo-Gangetic Plain. Nepal is narrowly separated from Bangladesh by the Silguri Corridor and from Bhutan by the Indian State of Sikkim. Nepal has a diverse geography, including fertile plains, subalpine forested hills, eight of the world's ten tallest mountains, including Mount Everest, the highest point on Earth. Nepal is a multi-ethnic, multi-lingual, multi-religious and multi-cultural state.

The name "Nepal" is first recorded in texts from the Vedic period of the Indian subcontinent, the era in ancient Nepal when Hinduism was founded, the predominant religion of the country. In the middle of the first millennium BC, Gautama Buddha, the founder of Buddhism, was born in Lumbini in southern Nepal as well as the goddess Sita was born in Janakpur where, the Janaki temple is located, as a great pilgrimage site for Hindus today, dedicated to the goddess Sita.

By the 18th century, the Gorkha Kingdom achieved the unification of Nepal. The Constitution of Nepal, adopted in 2015, affirms the country as a secular federal parliamentary republic divided into seven provinces. Nepal was a member of United Nations since 1955. Nepal has been a significant contributor to United Nations peacekeeping operations too.

Here's a brief profile of Nepal:

- **Official Name:** Federal Democratic Republic of Nepal
- **Capital:** Kathmandu
- **Population:** 29,164,578 (Census Nepal 2021 AD)
- **Area:** 147,516 square kilometers
- **Location:** Situated in South Asia, bordered by China (Tibet Autonomous Region) to the north and India to the south, east, and west.
- **Official Language:** Nepali
- **Other Languages:** Nepal is linguistically diverse, with over 120 languages spoken by different ethnic groups.
- **Religion:** Predominantly Hinduism, followed by Buddhism and smaller communities of Muslims, Christians, and others.
- **Currency:** Nepalese Rupee (NPR)
- **Government:** Federal Democratic Republic
- **Time Zone:** Nepal Standard Time (NST), which is UTC +5:45
- **Geography:** Nepal is geographically diverse, encompassing plains in the south (Terai), hills in the middle region, and the world's highest mountain peaks in the north (including Mount Everest).
- **Climate:** Nepal experiences a variety of climates, from subtropical in the Terai to alpine in the Himalayas. The climate varies significantly based on altitude and geographical features.

- **Economy:** Nepal's economy is predominantly agrarian, with agriculture employing a large portion of the population. Tourism, remittances from Nepalese working abroad, and hydropower are also important economic sectors.
- **Culture:** Nepal has a rich cultural heritage, influenced by Hinduism, Buddhism, and diverse ethnic traditions. Festivals, religious rituals, music, dance, and art are integral parts of Nepali culture.
- **Politics:** Nepal transitioned from a monarchy to a federal democratic republic in 2008. The country has a multi-party political system, but political stability has been challenged by ethnic, regional, and socio-economic factors.
- **Tourism:** Nepal is renowned for its natural beauty and adventure tourism opportunities. Trekking, mountaineering, wildlife safaris, and visits to cultural heritage sites attract tourists from around the world.
- **Challenges:** Nepal faces various challenges, including political instability, poverty, inadequate infrastructure, natural disasters (such as earthquakes), environmental degradation, and social inequalities.

Despite these challenges, Nepal remains a captivating destination with its stunning landscapes, cultural richness, and warm hospitality.

GEOGRAPHICAL DISTRIBUTION

Administrative division: Nepal has 7 provinces and 77 districts. It has 753 local units. There are 6 metropolitan city, 11 sub-metropolitan city, 276 municipalities and 460 rural municipalities for official works. The constitution grants 22 absolute powers to the local units while they share 15 more powers with the central and provincial governments.

S. No.	Provinces Name	Capital	No. of Districts	Area (km ²)	Census (2021)	Density People /(km ²)
1	Koshi Province	Biratnagar	14	25,905 Km ²	49,61,412	192
2	Madhesh Province	Janakpur	8	9,661 Km ²	61,14,600	636
3	Bagmati Province	Hetauda	13	20,300 Km ²	61,16,866	300
4	Gandaki Province	Pokhara	11	21,504 Km ²	24,66,427	116
5	Lumbini Province	Deukhuri	12	22,288 Km ²	51,22,078	230
6	Karnali Province	Surkhet	10	27,984 Km ²	16,88,412	61
7	Sudurpashchim Province	Godavari	9	19,874 Km ²	26,94,783	136
Total	Nepal	Kathmandu	77	1,47,516 Km ²	2,91,92,480	239

HISTORY OF POSTAL SERVICE OF NEPAL

We had got the first opportunity of sending and receiving letters through postal service in Nepal from the year of 1935 B.S. Personal letters or postal mails were delivered by Nepal Hulak Ghar for the first time. In the past, Hulak or the postal system in Nepal throughout history depended largely on people to deliver letter and goods across the country. There was categorization of the postal service system: One was the Kagate Hulak and the other one was Thaple Hulak. The former was for the transportation of official mail and the letter was for transporting goods, gifts, arms and ammunitions for the state, king or army. While kagat means paper, thaple is derived from thaplo meaning forehead. In synopsis, Nepali people carried "mail" across Nepal literally on their backs. Nepali stamps for the first time had been issued in April 1881 as a set of three. These stamps were in set in the value of one aanaa, two aanaas and four aanaas. These stamps were printed on European paper. From 1886 onwards, Nepal embarked on printing stamps on hand-made Nepali paper. Numerous printings of these first three values on the local paper were made till 1907. In 1907 AD, again European manufactured stamps picturing Pashupatinath was printed and issued. The remainders of initial stamps bearing three values of 1, 2 and 3 aanaas were used and reissued for telegraphs in 1917 AD.

Nepal became a member of the Universal Postal Union (UPU) on 11 October, 1956 (Ottawa Congress) and entered the global network of posts. In 1974, Nepal signed the UPU Parcel Post Agreement. Nepal received membership of the Asian-Pacific Postal Union (APPU) in 1982. After the restoration of multiparty democracy in the country in 1990, a new and comprehensive National Communication Policy, 1992 was brought forward by the government. This policy had accepted the need of an autonomous postal authority to be sharp and effective in the era of globalization and competitive market.

There has been a skyrocketing development in the communication sector. Rapid advancement of modern communication technologies has impacted the traditional business of the post. These days the trend of writing letters and sending them through post has plunged dramatically. As a result, there has been a let-up in the regular task of postal service. Realizing this change Nepal Post has been operating express mail service both domestic and international.

Hulak or Nepal Post still has a long way to go. It has a Herculean task to assimilate the change and innovation drive. Nepal's Hulak has not still been able to take full-fledged advantages of modern ICTs to improve the business performance. It's clear that the survival of Hulak largely hinges on its ability to rapidly change and innovate. Customer expectations, needs and tastes have demanded the changes in the traditional postal system.

Nepal Post or Hulak has to embrace the Vision 2022. It should uphold the reality that the future of the post strongly depends on its ability to innovate and create new products and services. One of the keys to innovation will be enhancing Hulak's capacity to embrace new technologies and transfer its trusted brands into the digital space. To achieve this goal, it will be challenging for Hulak to develop digital competencies, train and attract its human resources and also to make the relevant regulatory frameworks that will support the new environment. For successful integration, Hulak needs to build a seamless network that is connected both virtually and physically

and has a local and international presence. Full integration calls for the involvement of all key players in the postal supply chain, including customs and transport and the facilitation of cross-border e-commerce.

The world posts have a more relevant role to play as an infrastructure for development. In line with this global development and keeping its universal nature in mind, Hulak can do a big deal to drive the economic, social, financial and digital inclusion of all citizens of the world. Through its vast network, the post should target micro, small and medium-sized enterprises as well as the unbanked population as a new business frontier and create appropriated products to support the market.

The future of Nepal Post starts now to make postal service as expected by the costumers of this time. Nepal Post must work for creative products starting varities of new services so it meets the needs of customers. It must focus on innovation, integration and inclusion in its business mission to remain a strong and viable organization of Government of Nepal for the future. If Nepal Post can act soon with that realization, then only it will be able to achieve success and maintain its place in the competitive market with its presence and relevance.



A BRIEF HISTORY OF NEPAL POST

Department of Postal Service, Nepal is one of the largest employer organizations which works under the Ministry of Communications and Information Technology.

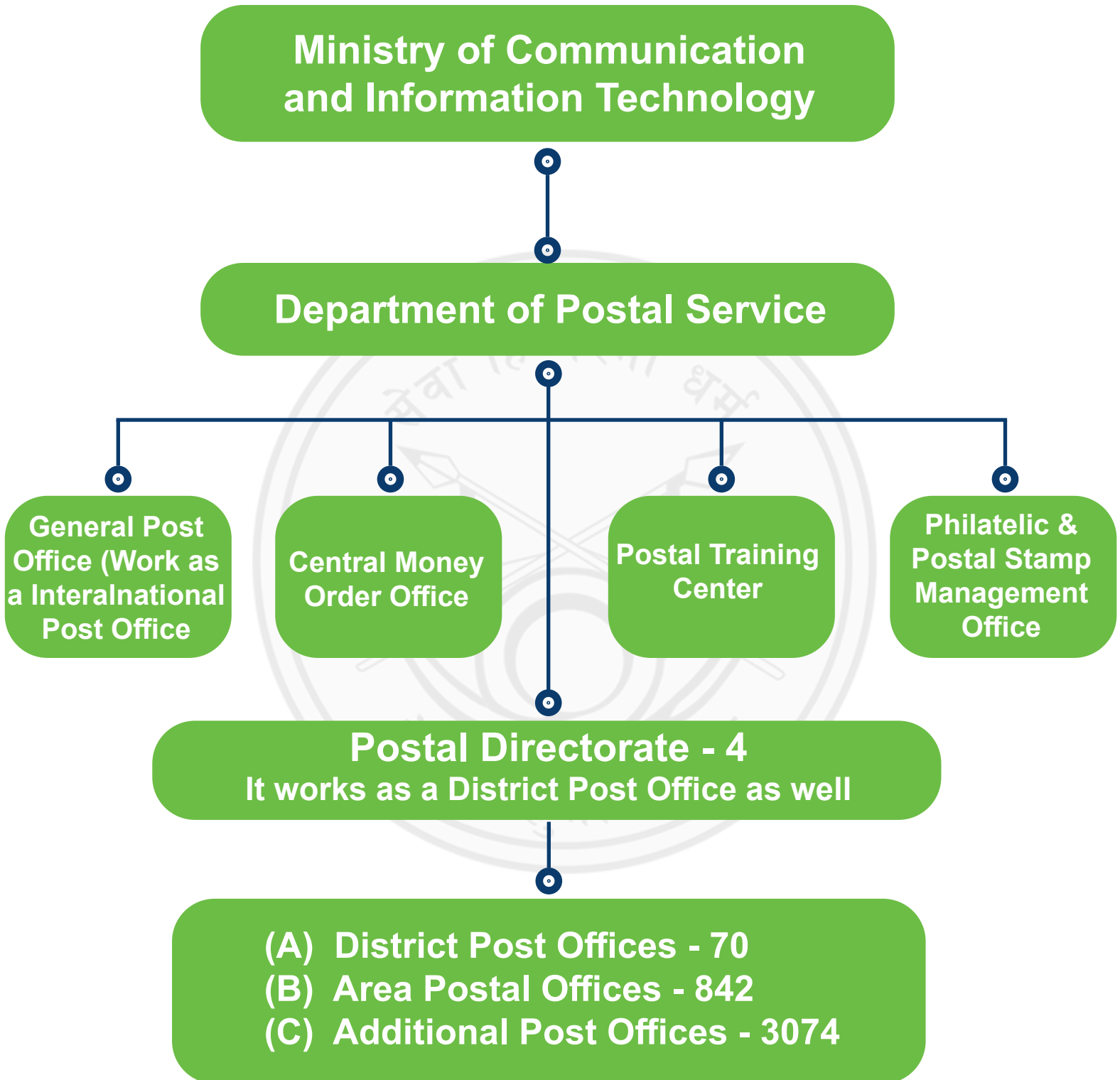
- 1878AD** Establishment of formal postal service.
- 1881AD** Cash payment replaced by postage stamps
- 1951AD** Drawn of Democracy (123 Post offices in operation)
- 1956AD** Became member of the Universal Postal Union (UPU), (Ottawa Congress)
- 1974 AD** Signed UPU Parcel Post Union Agreement
- 1976 AD** Introduction of Postal Saving Banking Service
- 1982 AD** Got membership of Asian-Pacific Postal Union
- 1991 AD** Establishment of Domestic Express Mail Service (EMS)
- 1992 AD** National Communication Policy
- 1995 AD** Introduction of International EMS
- 2004 AD** Signed Postal Payment Service Agreement of the UPU (Bucharest Congress)
- 2012 AD** Participated in SAPU Establishment preparatory meeting held from 18th to 19th December 2012 in New Delhi, India.
- 2014 AD** 'C' Level Certification in UPU's Quality of Service Project.
- 2015/16 AD** Participation in UPU's Quality of Service and Supply Chain improvement Project in Asian Countries.
- 2016 AD** EMS Cooperative Membership
- 2016 AD** 'B' Level Certification in UPU's Quality of Service and Supply Chain improvement Project.

STATISTICAL DATA OF NEPAL POST

Post Offices	3991
Population of Nepal	2,91,64,578
Population served per post office	7307
Post Offices in rural areas	75%
Post Offices in Urban areas	25% (in the Capital, Postal Directorates, District Head-quarters and some small towns)
Yearly Revenue	NPR.34,81,05,340
Yearly Expenditure	NPR.3,52,07,75,000

Statistical Data of Nepal Post	2020	2021	2022	2023
Number of Employees				
Regular Employees	6,294	6,294	6,294	6,294
Additional Postal Employees	10,858	10,858	10,858	10,858
Total	17,152	17,152	17,152	17,152
Male	60%	60%	58%	55%
Female	40%	40%	42%	45%
Number of Postal Outlets	3,991	3,991	3,991	3,991
Mail Turnover:				
Domestic Mail Handled	14,59,540	23,95,837	37,70,610	22,23,042
Foreign Mails (Dispatch)	4,05,074	2,71,237	2,73,333	5,63,419
Foreign Mails (Receipt)	15,91,464	4,38,049	2,10,118	1,41,742
EMS Domestic Handled	16,407	8,612	23,682	13,062
EMS International Handled	28,508	15,560	25,371	6,215
EMS Domestic Linkage	44 Districts	44 Districts	44 Districts	77 Districts
EMS International Linkage	39 Destination	39 Destination	39 Destination	39 Destination
Money Order Handled (NPR.)				
Inland Money Order	0.00	0.00	0.00	0.00
Foreign Money Order	2,90,558	2,06,505	0.00	0.00
Postal Saving Bank				
Number of Accounts	62,870	63,835	55,452	0.00
Dispatch in Saving Account (NPR.)	1,64,17,95,747	1,64,10,80,441	1,28,34,08,436	0.00
Philately				
Philately Revenue	26,29,16,000	2,05,09,200	23,85,47,000	31,40,15,661

ORGANOGRAM OF NEPAL POST



Index:

APO- Area Post Office

ADPO- Additional Post Office

PROPOSED ORGANOGRAM

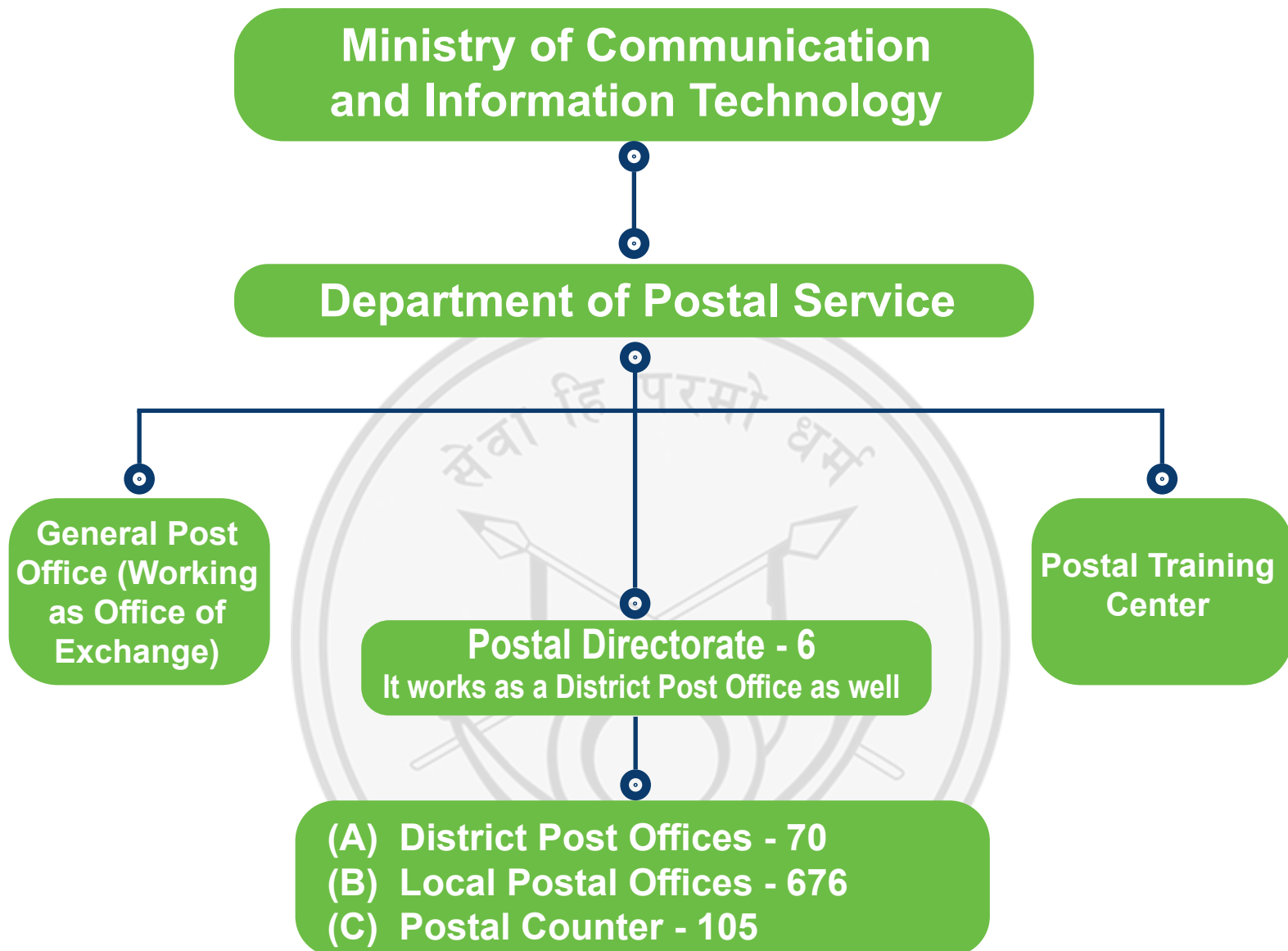


Table No. 1: Province wise break down of the Postal Outlet of the year, 2023

Provinces Name	G.P.O.	Regional Post Office	Districts Post Office	Area Post Office	Additional Post Office	Total
Koshi Province		1	13	174	524	712
Madhesh Province			8	108	597	713
Bagmati Province	1		12	147	525	685
Gandaki Province		1	9	108	365	483
Lumbini Province			11	135	479	625
Karnali Province		1	9	76	276	362
Sudurpashchim Province		1	8	94	308	411
Total	1	4	70	842	3074	3991

MAJOR STATISTICS OF MAIL TRAFFIC

DOMESTIC MAIL

Table No.2: Domestic Mail Handled

Types	Year			
	2020	2021	2022	2023
Ordinary Items	1,56,741	11,24,844	6,89,394	5,09,587
Registered Items	9,22,855	14,83,331	21,65,349	14,36,127
Insured Items	575	564	418	09
Small packets	30,603	39,605	49,038	11,937
Registered Newspapers, Periodicals & Blind Literatures	1,47,894	2,21,357	8,53,971	2,39,394
Parcels	3,318	9,532	18,815	16,903
Book- Posts	1,97,554	16,604	72,850	9,085
Total	14,59,540	28,95,837	38,49,835	22,23,042

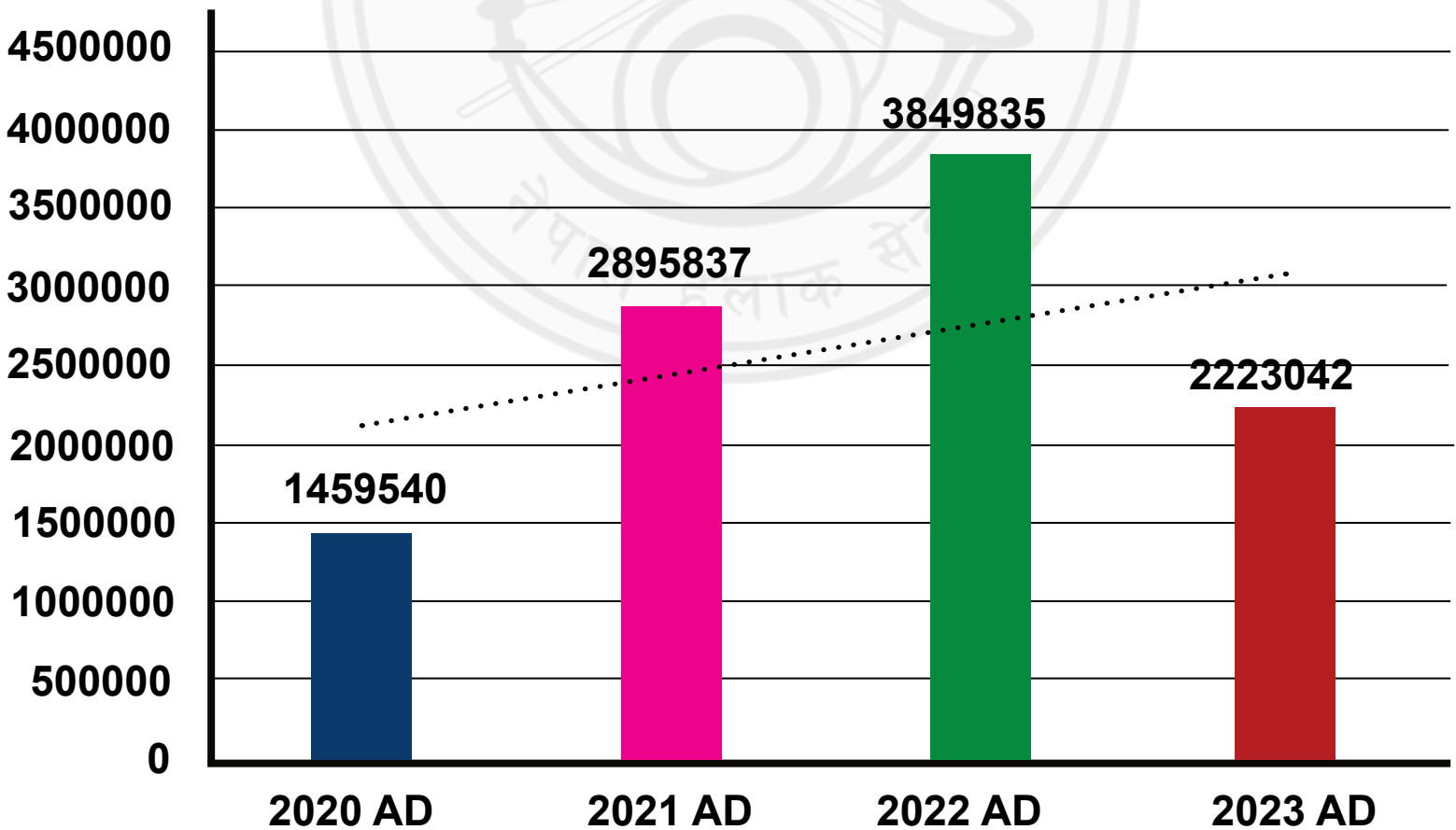


Table No.3: Dispatched Foreign Mail

Types	Year			
	2020	2021	2022	2023
Ordinary Items	1,36,024	56,221	2,48,000	5,25,000
Registered Items	1,27,376	59,602	23,783	29,411
Insured Items	-	-	-	-
Small packets	2,58,395	7,53,202	1,150	3,850
Registered Newspapers, Periodicals & Blind Literatures	-	-	-	-
Parcels	6,279	4,212	147	2,579
Book-Posts	-	-	-	-
Total	4,05,074	2,71,237	2,73,080	5,60,840

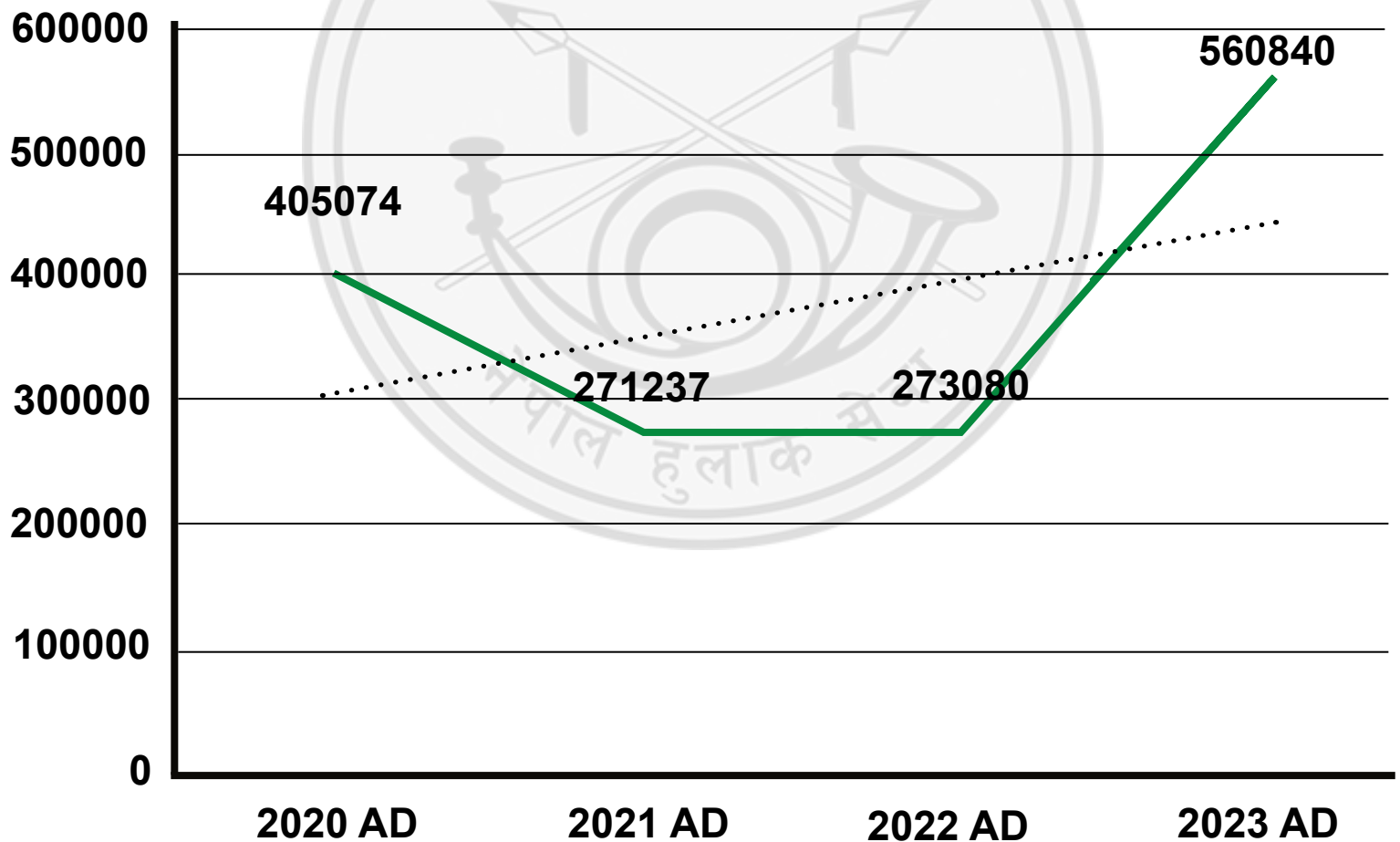
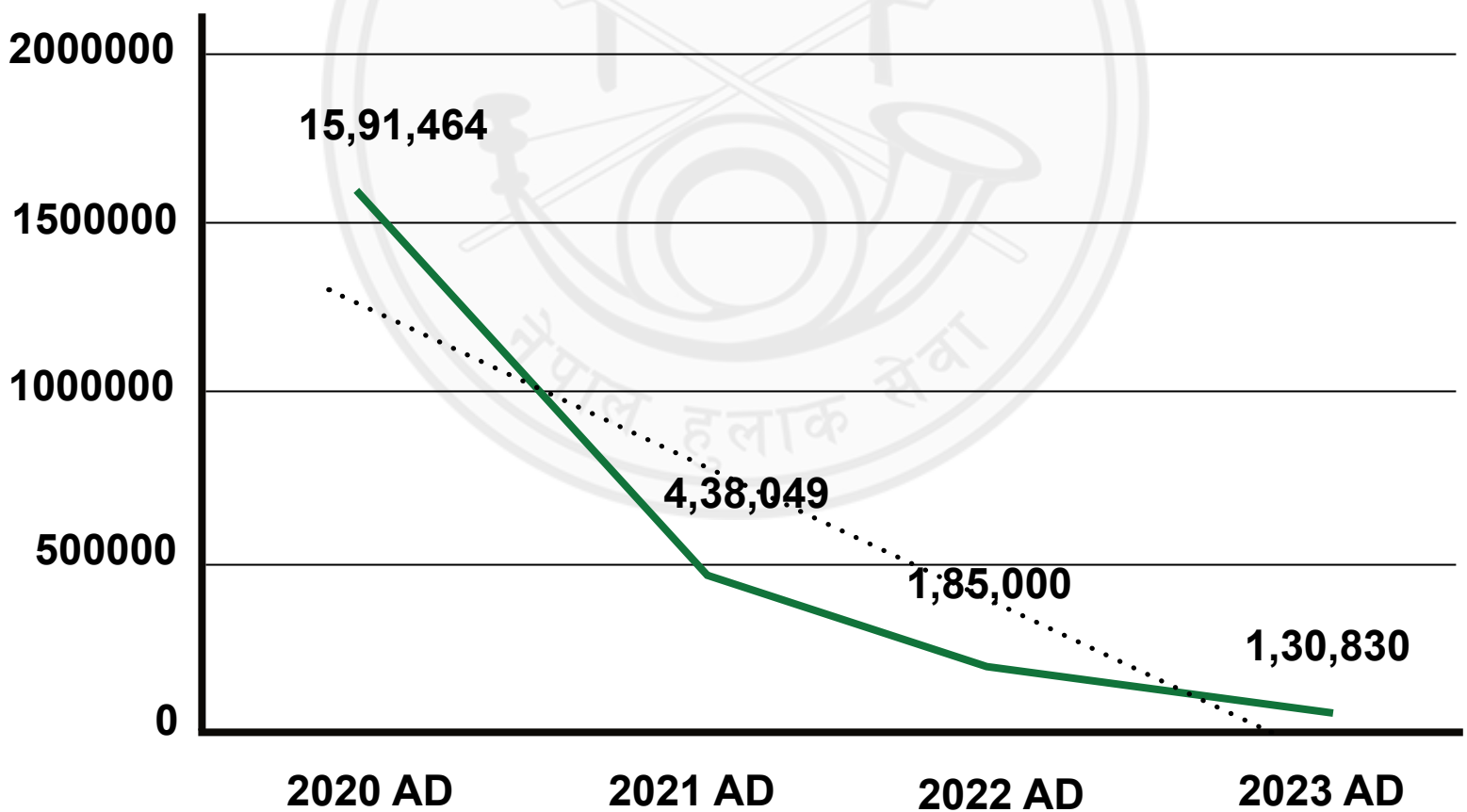


Table No.4: Receipt of Foreign Mail

Types	Year			
	2020	2021	2022	2023
Ordinary Items	62,290	71,145	91,873	67,912
Registered Items	1,43,618	17,265	11,885	11,275
Insured Items	-	-	-	-
Small packets	3,16,168	1,01,800	9,991	7,516
Registered Newspapers, Periodicals & Blind Literatures	6,51,076	2,40,000	-	-
Parcels	14,312	7,839	8,621	10,912
Book-Posts	-	-	62,630	33,215
Total	15,91,464	4,38,049	1,85,000	1,30,830



INTERNATIONAL PARCEL SERVICE

Parcel Mail is dispatched directly to 29 countries by air.

Parcels can be booked at Parcel Section of Kathmandu GPO, PD Morang, DPO Jhapa, Parsa, Rupandehi, Banke and Kailali. The Parcel Section of Kathmandu GPO serves as the Office of Exchange for Parcel mails.

The overall situation of the number of Parcels dispatched and received by Nepal Post in the last 3 years is shown below.

Table No. 5: Number of foreign parcel dispatched and received

Year	Dispatched Items	Received Items
2020	6279	14312
2021	5943	7839
2022	147	8621
2023	2579	10912

INTERNATIONAL EXPRESS MAIL SERVICE (EMS)

International Express Mail Service (EMS) is an international express postal service offered by postal administration members of the Universal Postal Union (UPU). These administrators have created the EMS Cooperative in 1998 within the framework of the UPU to promote the harmonization and development of postal services worldwide. EMS is an international postal express service for both documents and merchandise, which aims to provide customers with a high quality and competitive express mail product on a global basis. The international EMS service is regulated by the EMS Cooperative, established by the UPU's Postal Operations Council in 1998. Nepal has taken the membership of the UPU's EMS Cooperative in 2016. Till now, Nepal is providing EMS service for 39 destination countries internationally.

DOMESTIC EMS

Domestic EMS service in Nepal was started in 1991 from 7 municipalities and the service have expand all over the country in 2023. Twenty Seven District Post Offices are connected by air. These DPOs manage EMS by air between them and other DPOs are linked via districts and the GPO. Customers can book their EMS items at any of the postal outlets.

Table No.6: Collection and delivery time of EMS

Month	Day of Work	Time
Feb/Mar-Oct/Nov	Sunday-Thursday	10 AM-5 PM
	Friday	10 AM-3 PM
Nov/Dec-Jan/Feb	Sunday-Thursday	10 AM-4 PM
	Friday	10 AM-3 PM

Table No.7: Domestic EMS Service by Air Route

S. N.	Locations/District	S. N.	Locations/District	S. N.	Locations/District
1	Sankhuwasabha	10	Parsa	19	Baglung
2	Jhapa	11	Chitwan	20	Ruandehi
3	Morang	12	Bhaktapur	21	Kapilvastu
4	Sunsari	13	Lalitpur	22	Dang
5	Saptari	14	Kathmandu	23	Banke
6	Dhanusha	15	Lamjung	24	Bardiya
7	Mahottari	16	Tanahun	25	Surkhet
8	Rautahat	17	Pokhara	26	Kanchanpur
9	Bara	18	Parbat	27	Kailali

THOSE LOCATIONS ARE AS FOLLOWS:

Table No.8: Domestic EMS Service by Land Route

S. N.	Locations/District	S. N.	Locations/District	S. N.	Locations/District
1	Taplejung	9	Okhaldhunga	17	Sindhupalchowk
2	Panchthar	10	Udayapur	18	Rasuwa
3	Ilam	11	Siraha	19	Nuwakot
4	Terhrathum	12	Sarlahi	20	Dhading
5	Dhankuta	13	Dolakha	21	Makwanpur
6	Bhojpur	14	Ramechhap	22	Gorkha
7	Khotang	15	Sindhuli	23	Manang
8	Solukhumbu	16	Kavreplanchowk	24	Mustang

S. N.	Locations/District
25	Syangja
26	Myagdi
27	Nawalparasi
28	Palpa
29	Arghakhanchi
30	Gulmi
31	Rolpa
32	Pyuthan

S. N.	Locations/District
33	Rukum
34	Salyan
35	Dolpa
36	Jumla
37	Mugu
38	Humla
39	Kalikot
40	Jajarkot

S. N.	Locations/District
41	Dailekh
42	Bajura
43	Bajhang
44	Doti
45	Achham
46	Darchula
47	Baitadi
48	Dadeldhura

Table No.9: Domestic EMS traffic

EMS Items Booked	
Year	Items
2021	8,612
2022	23,682
2023	13,062

Table No.10: International EMS traffic

Year	EMS Item Received	EMS Items Dispatched	Total handled
	Document/Merchandise	Document/Merchandise	Document/Merchandise
2021	14,258	1,302	15,560
2022	25,118	253	25,371
2023	3904	2,311	6,215

POST BOX ONLINE SERVICE

General Post Office (GPO), Dillibazar has been operating post box online service since 2008. From this service, the client, who has taken the online post box service, can get information of parcel arrival to his/her post box by logging on the website of the GPO. There are a total of 12 Street Letter Boxes in Kathmandu Valley (inside the Ring-Road area). There are altogether 5,618 Post Boxes in the GPO out of which all are occupied.

POSTAL FINANCIAL SERVICE

Financial service covers Money Order Service, Postal Saving, Remittance service and Insured service. Postal Saving Banking service was effective when banking service was in operation. The details of the bank outlets is presented here under.

Table No.11: Province Wise Post Offices Providing Postal Financial Service:

Province Name	No. of POs Approved for Providing MOS	No. of Pos Providing MOS	No. of POs Approved for Providing PSBS	No. of POs Providing PSBS
Koshi	103	15	20	15
Madhesh	50	8	15	10
Bagmati	81	13	17	13
Gandaki	70	10	13	1
Lumbini	85	12	19	12
Karnali	49	10	15	4
Sudhuraschim	82	10	18	10
Total	520	78	117	65

PRESENT STATUS OF POSTAL SAVING BANK

Postal Saving Bank was effectively operated in past days when the public has not access to the commercial bank. Now-a-days there are more than forty financial institutions (Commercial bank, Development bank, Finance and Micro Finance) in operation all over the country. These institutions are providing modern banking services all over the country. People have access to anyone of the financial institution to fulfill their need base banking service. Government of Nepal has also adopted the policy to expand the branch of bank to all the local level. So, public has easy access to bank as per their need.

As per the program and policy announced by the government of Nepal, it was stated that the government will reform postal organization and transfer the Postal Saving Bank to any Commercial bank. Department of Postal Service initiated the process of transferring the Postal Saving Bank to the A class Commercial bank, i.e. Rastriya Banijya Bank. The process of transferring the saving accounts and debt accounts had successfully completed on september 2023. Now-a-days Postal Saving Bank is fully terminated and is not in operation.

FINANCIAL STATUS

Nepal Post Service operates on the concept of social service obligation of the government in the communication sector. Despite its large organizational structure, it is not financially sound. All types of service charge or income earned from postal activities are deposited in the in the government treasury.

REVENUE AND EXPENDITURE OF NEPAL POST

Nepal Post searched out revenue of NPR. 27,79,64,000 while the expenditure was of NPR. 3,56,38,96,000 in fiscal year 2078/2079 B.S. Resulting in the increase of revenue collection than the previous year. Also the expenditure has got increased of expenses in being spent to pay the staff salary and allowances. All the financial resource comes from the government budgetary system. To overcome these issues, economically sound and business like service is to be started through the post. Entrepreneurship and professionalism is to be developed to manage the unproductive expenditure for this purpose. Likewise, steps should be forwarded to enhance the efficient and to widen the scope of the postal services.

Table No.: 12 Revenue and Expenditure of Nepal Post

Revenue in NPR.	F/Y 2076/077	F/Y 2077/078	F/Y 2078/079	F/Y 2079/080
Postal Services	26,29,16,000	20,50,92,000	23,85,47,000	31,40,15,661
Miscellaneous	6,25,69,080	4,44,54,000	3,94,17,000	3,40,89,679
Total Revenue	32,54,85,080	24,95,46,000	27,79,64,000	34,81,05,340

Expenditure in NPR.	F/Y 2076/077	F/Y 2077/078	F/Y 2078/079	F/Y 2079/080
Current	3,80,24,00,000	3,87,04,97,000	3,46,69,93,000	3,42,08,37,000
Capital	5,84,00,000	8,94,00,000	9,69,03,000	9,99,38,000
Total Expenditure	3,86,08,00,000	3,95,98,97,000	3,56,38,96,000	3,52,07,75,000

HUMAN RESOURCE

Nepal Postal Service uses one of the largest numbers of government employees for its highly labor intensive work. It currently maintains 1 General Post Office, 3 Central Offices, 4 Postal Directorates, 70 District Post Offices, 842 Area Post Offices and 3,074 Additional Post Offices. By 2022; 6,294 permanent staffs and 10,858 part time workers have been working in Nepal's Postal Service. The total numbers of employee is 17,152 and among them 45% are female whereas 55% of them are male.

CURRENT STATUS OF REGULAR EMPLOYEES IN NEPAL POST (2023)

Table No.: 13 Without Extra Departmental Employee's Record

S.N.	Designation	Number of Post
1	Joint Secretary (Gazetted Class - I)	1
2	Under Secretary (Gazetted Class - II)	10
3	Section Officer (Gazetted Class - III)	103
4	Account Officer (Gazetted Class - III)	2
5	Art Officer (Gazetted Class - III)	1
6	Computer Engineer (Gazetted Class - III)	1
7	Assistant Officer (Non Gazetted Admin Class - I)	214
8	Assistant Account Officer (Non Gazetted Class- I)	27
9	Computer Operator (Non Gazetted Class - I)	5
10	Assistant Account Officer (Non Gazetted Class- II)	52
11	Assistant Officer (Non Gazetted Class- II)	1087
12	Typist Assistant Office (Non Gazetted Class- I)	1
13	Senior Technician (Non Gazetted Class- II)	2
14	Electrician	1
15	Heavy Driver	3
16	Light Vehicle Drivers	18
17	Post Man	2599
18	Mail Runner	1989
19	Vehicle Mechanics	1
20	Sweeper	5
21	Office Assistant	171

Table No.: 14 Domestic Training Program & Activity, 2023

S.N.	Training Programs	Quantity	Total Participants
1	Counter and Mail Management Training Program	3	74
2	Office Operations and Management Training Program	2	44
3	Orientation Training Program	2	47
4	Post Man Motivation Training Program	3	65
5	Mail Runner Refreshment Training Program	3	66





ACTIVITY OF GENERAL POST OFFICE, KATHAMANDU



ACTIVITY OF DEPARTMENT OF POSTAL SERVICE, KATHAMANDU

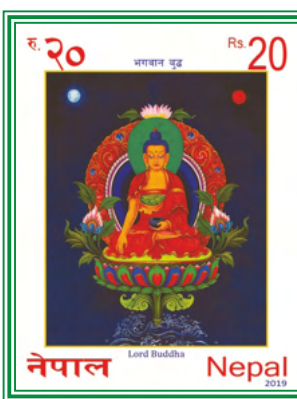
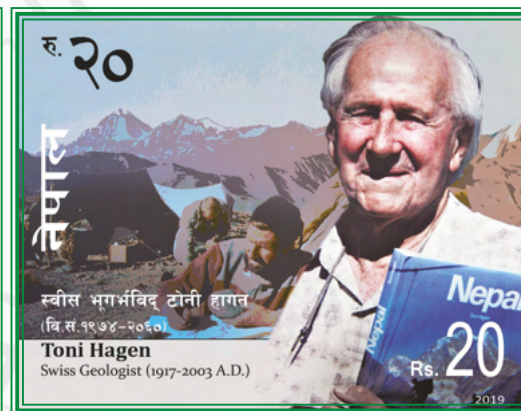


ANNUAL REPORT 2023



ISSUE OF POSTAGE STAMP IN 2019

In the year 2019, Department of Postal Service brought a commemorative postage stamps are as follows:



ISSUE OF POSTAGE STAMP IN 2020

In the year 2020, Department of Postal Service brought a commemorative postage stamps are as follows:



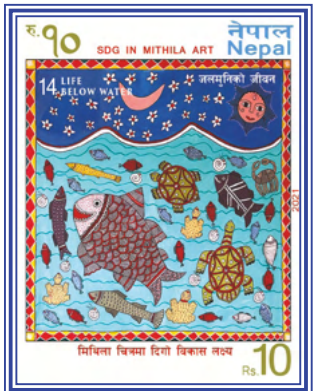
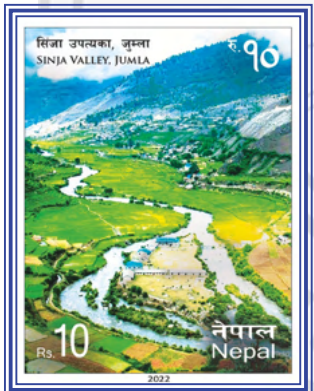
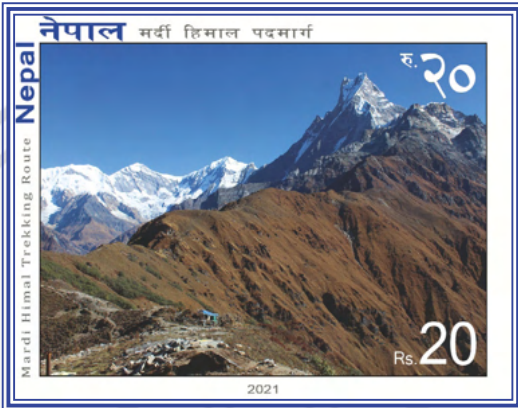


ISSUE OF POSTAGE STAMP IN 2021

In the year 2021, Department of Postal Service brought a commemorative postage stamps are as follows:



ANNUAL REPORT 2023



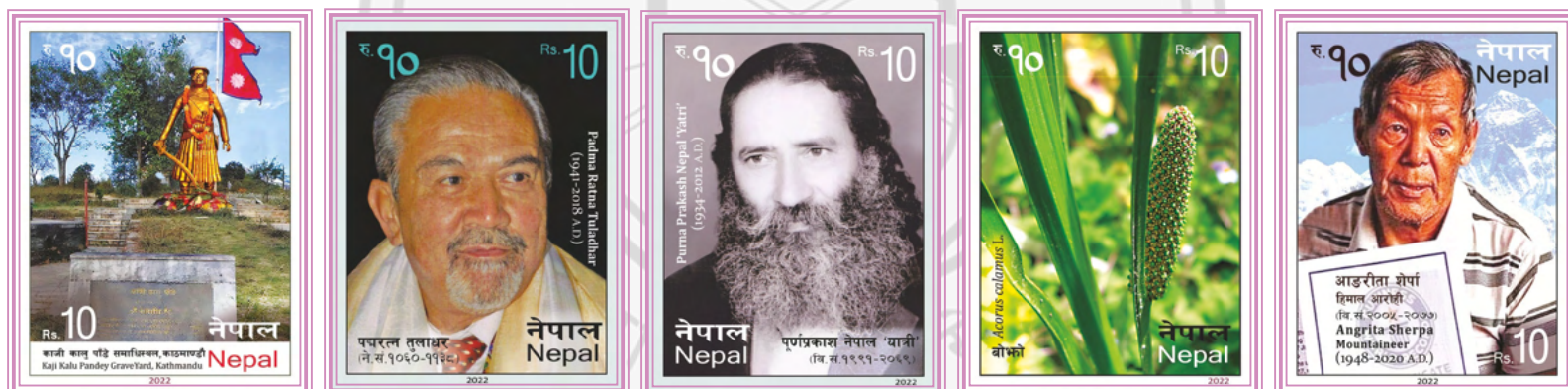


ISSUE OF POSTAGE STAMP IN 2022

In the year 2022, Department of Postal Service brought a commemorative postage stamps are as follows:



ANNUAL REPORT 2023





INTERNATIONAL RELATIONS

Nepal became member of Universal Postal Union (UPU) in 1956.

In 1982, Nepal was admitted to the Asian-Pacific Postal Union

(APPU) and became member of the Asia Pacific Post Cooperative in 2000. Nepal has been actively participating in the meetings of these organizations since its membership.

Nepal Post has been receiving technical assistance from the UPU and the APPU in the form of consultancy mission, trainings and equipment's. Nepal Post had implemented UPU/ITU and Nepal Telecommunication Authority funded E-post project in Dhankuta DPO, Kavre DPO and mid-Western Regional Postal Directorate, Surkhet in 2007. The project was phased out after its successful implementation.

AGENCY FUNCTIONS

DELIVERY SERVICE

Nepal Post has been providing passport delivery, vehicles embossed number plate delivery and consular service department documents delivery service as an agency function.

MISCELLANEOUS

REGISTERED NEWS PAPERS AND PERIODICALS SERVICE

Nepal Post provides mailing facilities to the publishers of newspapers and periodicals which are registered in the General Post Office, Kathmandu, Four Postal Directorates or 70 District Post Offices as per Postal Act, 2019 B.S.

MAJOR MAIL CONVEYANCE AND MAIL ROUTES

Department of Postal Services uses different modes of transport to carry mail throughout the country. Some places are accessible only by air while most of the parts can only be reached by surface transport. All the districts are connected by the road. Therefore, vehicular transportation is used widely for conveying the mail.

Table No.: 15 Distances covered by vehicle and foot runners

Year	Number of Mail Routes	One-Way Length of Mail Routes in Km.
2021	910	20,496
2022	910	20,496
2023	Under review.	

POST OFFICE BUILDINGS

Most of the District Post Offices are housed in their own buildings. Some Area Post Offices and most of the Extra-department at Post Offices are located in the space provided by Rural Municipalities, private persons or public offices.



POSTAGE RATES EFFECTIVE FROM 2022

INLAND TARIFF RATES

Table No.: 16 Postal Tariff Rate

S.N.	Particulars	Previous Rates (NPR.)	Current Rates (NPR.)
1.	The first 20 grams of the letter	8/-	10/-
	After that every 10 grams or Fraction	5/-	5/-
2.	Airmail	3/-	5/-
3.	(a) Postal letter	5/-	10/-
	(b) Printed postal letter	7/-	10/-
4.	Book post printed paper newspaper, magazine up to first 20 grams.	2/-	5/-
	After that every 20 grams or Fraction.	2/-	5/-
5.	Small packets of 50 grams or fraction	10/-	20/-
	After that every 20 grams or fraction	5/-	10/-
6.	Postal Registration Newspaper, Magazine		
	Up to 100 grams per copy.	2/-	2/-
	After that every 20 grams or fraction.	2/-	2/-
7.	Newspaper fee (to file postage from a district)	100/-	200/-
	For each additional district to enroll in other districts as well	5/-	10/-
8.	Newspaper renewal fee (to file postage from a district)	50/-	100/-
	For each additional district	5/-	10/-
	If it is not renewed within the time limit prescribed by the prevailing laws, it will be renewed within two months after the expiry of the time limit with double fee, after the expiry of two months period, to start again a new process of newspaper registration.		
9.	Literature for the blind (up to a maximum of 7 kg only)	Free of Cost	Free of Cost

Explanation: "Printed postal letter" means a letter printed or photocopied in any part, other than by hand writing or by typewriter, from a machine press or by cyclostyle, except in the place specified for writing the name, address, etc. of the sender.

Table No.: 17 Miscellaneous Tariff Rates

S.N.	Particulars	Previous Rates (NPR.)	Current Rates (NPR.)
1.	Post office filing of three items	5/-	10/-
2.	Registration fee for each	20/-	30/-
3.	Delayed registration fee for each	5/-	10/-
4.	Return receipt of each	8/-	10/-
5.	Certified copy of the registered postal item of each receipt (if requested within 6 months)	10/-	10/-
6.	Registered postal items for each item returned (before dispatching postal items)	20/-	30/-
7.	If wanted of each item to change the postal address (before postal dispatch)	20/-	30/-
8.	Enquire fee	Free of cost	Free of cost
9.	Insurance fee Up to Rs. 500 / - (It will incur extra registry fee.)	15/-	20/-
	After that, Rs. 100.- or fraction	5/-	10/-
10.	Money order Commission:		
	For Nepal:		
	(a) The first Rs. Up to 200	5/-	10/-
	There after Rs. 100 or part	2/-	5/-
	(b) Additional charges for express money order (only where express service is applied)	15/-	30/-
	(c) When making money order through electronic means, additional per form (effective from the date and in the districts of specified by the Department of Postal Service.)	20/-	40/-
(d) Money order per form	2/-	5/-	
11.	Regarding life and non-life insurance fees approved by the Government of Nepal.		
	(a) In insurance policy up to Rs. One lakh	10/-	20/-
	(b) In insurance policy above Rs. One lakh	20/-	50/-
	c) In all cash payment receipts	10/-	10/-

S.N.	Particulars	Previous Rates (NPR.)	Current Rates (NPR.)
12.	Post box service (for one fiscal year)		
	Small	750/-	750/-
	Medium	1000/-	1000/-
	Large	1500/-	1500/-
13.	Online Post Box Service (for one Fiscal Year)		
	Small	750/-	750/-
	Medium	1000/-	1000/-
	Large	1500/-	1500/-
14.	Postal Identity Card:		
	One copy for one fiscal year	10/-	10/-
	One copy for three fiscal years	20/-	20/-

Table No.: 18 Parcel Tariff Rates

S.N.	Particulars	Previous Rated (NPR.)	Current Rates (NPR.)
1.	Surface Mail		
	(a) Parcel (starting from minimum 2 kilograms)	30/-	200/-
	After that each 500 grams or fraction (up to 20 kilograms)	30/-	50/-
	b) Parcel to be sent from the districts declared as remote areas by the Government of Nepal to accessible districts (starting from minimum 2 kilograms).	30/-	190/-
	After that for every 500 grams or fraction (up to 20 kilograms)	30/-	40/-
2.	Airmail (Applicable only to districts as per mail transport agreement of Department of Postal Service)		
	(a) Air parcel (starting from a minimum of 2 kilograms)	30/-	230/-

S.N.	Particulars	Previous Rated (NPR.)	Current Rates (NPR.)
	After that every 500 grams or fraction (up to 10 kilograms)	75/-	100/-
2.	(b) Parcel to be sent from the districts declared as remote areas by the Government of Nepal to accessible districts (starting from a minimum of 2 kilograms).	30/-	200/-
	After that every 500 grams or fraction (up to 10 kilograms)	75/-	100/-
3.	Additional registration fee to be incurred in parcel tariff rate of S. N. 1 and 2		

Table No.: 19 Express Mail service Tariff Rates

S.N.	Particulars	Previous Rated (NPR.)	Current Rates (NPR.)
1.	(a) up to the first 40 grams in a lump sum.	50/-	70/-
	b) After that additional 20 grams or fraction (up to 2 kilograms).	10/-	15/-
2.	Same Day Delivery Service		
	(a) Up to the first 20 grams in a lump sum.	50/-	100/-
	(b) After that an additional 25 grams or fraction (up to 2 kilograms) (This service will be provided only within Kathmandu Metropolitan City.)	20/-	40/-

FOREIGN POSTAL TARIFF RATES

Table No.: 20 Applicable to Air Routes

S.N.	Particulars	Zone 1		Zone 2		Zone 3		Zone 4	
		Previous Rates (NPR.)	Current Rates (NPR.)	Previous Rates (NPR.)	Current Rates (NPR.)	Previous Rates (NPR.)	Current Rates (NPR.)	Previous Rates (NPR.)	Current Rates (NPR.)
1.	Letter								
	Up to 20 grams	25/-	50/-	35/-	60/-	50/-	80/-	60/-	100/-
	21 to 50 grams	50/-	90/-	70/-	120/-	90/-	160/-	105/-	200/-
	51 to 100 grams	85/-	150/-	125/-	200/-	160/-	245/-	185/-	270/-
	101 to 250 grams	175/-	250/-	265/-	350/-	340/-	430/-	395/-	485/-
	251 to 500 grams	310/-	395/-	455/-	535/-	585/-	680/-	680/-	775/-
	501 to 1000 grams	565/-	655/-	755/-	835/-	985/-	1095/-	1185/-	1285/-
	1001 to 1500 grams	765/-	860/-	955/-	1045/-	1290/-	1395/-	1640/-	1745/-
	1501 to 2000 grams	1020/-	1130/-	1205/-	1310/-	1645/-	1755/-	2045/-	2155/-
2.	(a) Postal letter	20/-	40/-	25/-	50/-	35/-	70/-	40/-	80/-
	(b) Printed postal letter	20/-	40/-	25/-	50/-	35/-	70/-	40/-	80/-
3.	Airmail	20/-	40/-	25/-	50/-	30/-	70/-	35/-	80/-
4.	Bookpost, printed paper newspaper, magazine								
	Up to 50 grams	40/-	80/-	50/-	100/-	80/-	160/-	95/-	190/-
	51 to 100 grams	75/-	125/-	90/-	140/-	130/-	180/-	170/-	220/-

S.N.	Particulars	Zone 1		Zone 2		Zone 3		Zone 4	
		Previous Rates (NPR.)	Current Rates (NPR.)	Previous Rates (NPR.)	Current Rates (NPR.)	Previous Rates (NPR.)	Current Rates (NPR.)	Previous Rates (NPR.)	Current Rates (NPR.)
	101 to 250 grams	160/-	220/-	200/-	260/-	275/-	335/-	355/-	415/-
	251 to 500 grams	285/-	355/-	360/-	430/-	475/-	545/-	580/-	650/-
	501 to 1000 grams	510/-	590/-	645/-	725/-	830/-	910/-	1025/-	1105/-
	1001 to 1500 grams	685/-	775/-	860/-	950/-	1045/-	1135/-	1350/-	1440/-
	1501 to 2000 grams	810/-	900/-	1005/-	1110/-	1250/-	1360/-	1555/-	1660/-
	From 2001 grams to per 1000 grams or fraction (maxim up to 5 kilo-grams if one. book only)	85/-	195/-	205/-	315/-	280/-	395/-	335/-	450/-
5.	Small packet								
	Up to the first 50 grams	60/-	120/-	70/-	140/-	90/-	180/-	110/-	220/-
	51 to 100 grams	105/-	210/-	125/-	260/-	160/-	340/-	195/-	410/-
	101 to 250 grams	205/-	350/-	245/-	395/-	315/-	465/-	375/-	625/-
	251 to 500 grams	350/-	510/-	440/-	600/-	540/-	700/-	635/-	940/-

ANNUAL REPORT 2023

S.N.	Particulars	Zone 1		Zone 2		Zone 3		Zone 4	
		Previous Rates (NPR.)	Current Rates (NPR.)	Previous Rates (NPR.)	Current Rates (NPR.)	Previous Rates (NPR.)	Current Rates (NPR.)	Previous Rates (NPR.)	Current Rates (NPR.)
	501 to 1000 grams	610/-	785/-	790/-	950/-	945/-	1125/-	1100/-	1370/-
	1001 to 1500 grams	840/-	1010/-	1105/-	1290/-	1320/-	1500/-	1535/-	1855/-
	1501 to 2000 grams	1050/-	1245/-	1350/-	1545/-	1625/-	1820/-	1900/-	2260/-
6.	Literature for blind	Free of cost		Free of cost		Free of cost		Free of cost	
7.	Postal Register Newspaper, Magazine								
	Up to the first 20 grams	15/-	20/-	20/-	25/-	25/-	30/-	30/-	35/-
	21 to the first 50 grams	30/-	35/-	40/-	45/-	45/-	50/-	50/-	55/-
	51 to 100 grams	45/-	50/-	60/-	65/-	70/-	75/-	80/-	85/-
	101 to 250 grams	85/-	90t/-	115/-	120/-	135/-	140/-	155/-	160/-
	251 to 500 grams	140/-	145/-	185/-	190/-	230/-	235/-	265/-	270/-
	501 to 1000 grams	250/-	255/-	325/-	330/-	385/-	390/-	445/-	450/-
	1001 to 1500 grams	360/-	365/-	440/-	445/-	565/-	570/-	640/-	645/-
	1501 to 2000 grams	450/-	455/-	550/-	555/-	650/-	655/-	750/-	755/-

Table No.: 21 For Surface Route

S.N.	Particulars	For SAARC Countries		For APPU Members		For Other Nations	
		Previous Rates (NPR.)	Current Rates (NPR.)	Previous Rates (NPR.)	Current Rates (NPR.)	Previous Rates (NPR.)	Current Rates (NPR.)
1.	Letter						
	Up to 20 grams	20/-	45/-	25/-	50/-	30/-	60/-
	21 to 50 grams	40/-	85/-	50/-	95/-	60/-	115/-
	51 to 100 grams	65/-	150/-	85/-	150/-	95/-	165/-
	101 to 250 grams	135/-	225/-	175/-	270/-	200/-	295/-
	251 to 500 grams	230/-	325/-	300/-	395/-	340/-	435/-
	501 to 1000 grams	380/-	480/-	510/-	615/-	560/-	660/-
	1001 to 1500 grams	530/-	635/-	685/-	790/-	760/-	865/-
	1501 to 2000 grams	605/-	715/-	810/-	920/-	910/-	1020/-
2.	Postal letter	15/-	25/-	20/-	35/-	20/-	40/-
3.	Bookpost, printed paper newspaper, magazine						
	Up to 20 grams	15/-	30/-	15/-	30/-	20/-	35/-
	21 to 50 grams	25/-	45/-	30/-	50/-	35/-	60/-
	51 to 100 grams	40/-	60/-	50/-	75/-	60/-	80/-
	101 to 250 grams	75/-	90/-	95/-	105/-	120/-	135/-
	251 to 500 grams	115/-	135/-	160/-	185/-	210/-	235/-
	501 to 1000 grams	185/-	205/-	260/-	290/-	360/-	390/-
	1001 to 1500 grams	250/-	270/-	345/-	365/-	460/-	495/-
	1501 to 2000 grams	305/-	325/-	410/-	435/-	510/-	535/-
	From 2001 grams to per 1000 grams or fraction (maximum 5 kilograms if one book only)	155/-	180/-	210/-	240/-	240/-	275/-
4.	Small packet						
	Up to 100 grams	25/-	50/-	30/-	60/-	40/-	80/-
	101 to 250 grams	50/-	90/-	65/-	120/-	80/-	145/-

S.N.	Particulars	For SAARC Countries		For APPU Members		For Other Nations	
		Previous Rates (NPR.)	Current Rates (NPR.)	Previous Rates (NPR.)	Current Rates (NPR.)	Previous Rates (NPR.)	Current Rates (NPR.)
	251 to 500 grams	90/-	165/-	120/-	220/-	145/-	270/-
	501 to 1000 grams	165/-	240/-	220/-	290/-	270/-	305/-
	1001 to 1500 grams	240/-	305/-	290/-	410/-	305/-	510/-
	1501 to 2000 grams	305/-	380/-	410v	510/-	510/-	620/-
5.	Literature for the blind	Free	Free	Free	Free	Free	Free
6.	Postal Register Newspaper, Magazine	10/-	15/-	15/-	20/-	20/-	25/-
	Up to 50 grams	15/-	20/-	25/-	30/-	30/-	35/-
	51 to 100 grams	25/-	30/-	50/-	55/-	60/-	65/-
	101 to 250 grams	35/-	40/-	85/-	90/-	105/-	110/-
	251 to 500 grams	70/-	75/-	165/-	170/-	190/-	195/-
	501 to 1000 grams	85/-	90/-	235/-	240/-	265/-	270/-
	1001 to 1500 grams	110/-	115/-	310/-	315/-	360/-	365/-

Note: (Maximum weight of letter and printed paper up to 2 kilograms and book and pamphlet up to 5 kilograms)

Table No.: 22 Foreign Miscellaneous Tariff Rates

S.N.	Particulars	Previous Rates (NPR.)	Current Rates (NPR.)
1.	Inquiry fee of each	Free of cost	Free of cost
2.	Customs inspection tariff (if customs levied)	10/-	30/-
3.	Postal vouchers for every 3 items	10/-	15/-
4.	Register fee for each item	130/-	150/-
5.	Postage stamp equal to international reply coupon (purchase)	60/-	100/-
6.	International reply coupon (sales) per coupon	150/-	300/-
7.	Return receipt	15/-	25/-

8.	Certified copy of the registered postal item of each receipt (if requested within 6 months)	10/-	10/-
9.	Withdrawal of registered postage of each item (before postal dispatch)	20/-	30/-
10.	If wanted of each items to change the address. (before postal dispatch)	20/-	30/-
11.	Parcel warehouse rent		
	(a) Within 7 days from the date of submission of declaration letter	Free of cost	Free of cost
	(b) thereafter for 15 days per day	5/-	5/-
	(c) Thereafter daily for one year	10/-	10/-
	(d) Then the auction will be held as per rules. (Except for the prohibited goods, no import license is required for the discounted goods as per the rules)		
12.	Repacking Charge		
	(a) In a parcel free of customs duty	Free of cost	Free of cost
	(b) In each parcel in which customs duty is levied Up to Rs. 50.	15/-	20/-
	(c) In each parcel in which customs duty is levied Up to Rs. 100.	20/-	30/-
	(d) In each parcel which customs duty is levied up to Rs. 200.	25/-	40/-
	(e) In each parcel which customs duty is levied from Rs. 201. up to Rs. 500.	30/-	50/-
	(f) In each parcel which customs duty is levied from Rs. 501 to above.	50/-	60/-
13.	The insurance fee for India is up to Rs. 300.	20/-	30/-
	After that, Rs. 100 each or fraction.	10/-	20/-
14.	The money order commission for India in the first up to Rs. 200.	10/-	20/-
	Then in every Rs. 100.- or fraction	6/-	10/-
15.	One copy of money order form (blank form) for India	5/-	10/-

Note:

1. If the parcel is delivered by the post office which opens the parcel for the purpose of customs inspection, no repackaging charge will be levied for that purpose. In case of foreign parcel to be delivered through foreign parcel, declaration letter and warehouse rental fee will be waived in case of non-imposition of items for which customs duty by separating of customs duty and

non-customs duty in the presence of the concerned customs office by the general postal-office.

2. Registration fee for insurance will be charged separately.
3. Other tariff rates not included in this notice shall be the same as miscellaneous applicable for inland postal service.
4. In accordance with the provisions made by the Extraordinary General Assembly of the Third World Postal Union held in Geneva, Switzerland in 2019 A.D., an additional fee of 1.600 S.D.R shall compulsorily be levied for the year 2020 A.D. for registry letter. (this registry fee is binding regardless of existence or non-existence of bilateral agreement.

REGIONALLY DIVIDED COUNTRIES

(a) First Region

Afghanistan, Bangladesh, Bhutan, Sri Lanka, Pakistan, Maldives and India

(b) Second Region

Oman, Bahrain, Brunei, People's Republic of China, Hong Kong, Indonesia, Iran, Iraq, Cambodia, Kuwait, Laos, Macao, Myanmar, Malaysia, North Borneo, Oman Persian Gulf, Philippines, Qatar, Ras Al Khalmah, Sawah, Sarawak, Saudi Arabia, Singapore, Somali Republic, Taiwan, Thailand, Umal, United Arab Emeritus, Vietnam, Yemen, Arab Republic.

(c) Third Region

Albania, Armenia, Azerbaijan, Algeria, Angola, Ascension, Austria, Vechuana, Belgium, Venice, Botswana, Bulgaria, Burundi, Belarus, Bosnia and Herzegovina, Croatia, Republic of Cameroon, Cape Verde Island, Central African Republic, Chad, Comoros, Congo, Cyprus, Czech Republic, Slovak Republic, Dahomey, Denmark, Djibouti, Egypt, Ethiopia, Eritrea, Estonia, Ecuadorian Guinea, Finland, Guinea, East Africa, West Africa, France, Gabon, Gambia, Germany, Ghana, Gibraltar, Great Britain, Northern Ireland, Greece, Republic of Guinea, Guinea-Bissau, Hungary, Iceland, Isles of Man, Israel, Italy, Ivory Coast, Japan, Jersey, Jordan, Kenya, Republic of Korea, Kazakhstan, Kyrgyzstan, Democratic People's Republic of Korea, Lebanon, Lesotho, Liberia, Latvia, Lithuania, Republic of Libya, Arab Jamahiriya, Liechtenstein, Luxembourg, Madagascar, Moldova, Malawi, Republic of Mali, Malta, Mauricinia, Mauritius, Morocco, Mont Sarat, Republic of Mongolia, Monaco, Mozambique, Namibia, The Netherlands, Republic of Niger, Nigeria, Norway, Poland, Portugal, Portuguese Timor, Reunion Romania, Rwanda, San Marino, Saint Helena, Senegal, Sicily, Sierra Leone, South Africa, Spain, Slovenia, Spanish Guinea, Sudan, Switzerland, Swaziland, Sweden, Syria, Tanzania, Turkmenistan, Togo Republic, Tristan da cunha, Tunisia, Turkey, Uganda, Ukraine, Russian Federation, Upper

Volta, Burkina Faso, Vatican City, Uzbekistan, Yugoslavia, Montenegro, Zambia, Zaire, Zimbabwe.

(d) Fourth Region

Angola Island, Antigua, Australia, Argentina, Bahamas, Barbados, Braille, Bermuda, Bolivia, Brazil, Canada, Caroline Island, Cayman Island, Dominica, Chile, Colombia, Cook Island, Costa Rica, Cuba, Republic of Ecuador, El Salvador, Falkland Island, Canning Island, Fiji, Ligwart and Ellis Island, Granada, Guatemala, Guam, Guinea, Haiti, Honduras, Republic of Jamaica, Kiriva, Marina Island, Martic, Mexico, Nauru Island, New Caledonia, New Hubbardis, New Zealand, Nicaragua, Norfolk Island, Panama, Panama Canal Zone, Papua New Guinea, Paraguay, Peru, Pitcairn Island, Puerto Rico, St. Thomas, St. Christopher, St. Kitts Nevis, Saotome And Prinsep, Samoa, San Marino, Solomon Island, Saint Lucia, St. Vincent, St. Pierre and Miquelon, Suriname, Tonga, Trinidad and Tobago, Turcus and Calain Island, Tuvalu, United State of America, Uruguay, Vanuatu, Venezuela, Virgin Island, Balis and Futuna, West Samoa, Marshall Island.

SAARC COUNTRIES

Afghanistan, Bangladesh, India, Bhutan, Sri Lanka, Pakistan, Maldives. (Including Nepal)

APPU Asian-Pacific Postal Union (APPU) of member countries:

Afghanistan, Australia, Bangladesh, Bhutan, Brunei Darussalam, Cambodia, People's Republic of China, Fiji, India, Indonesia, Iran, Japan, Laos, Korea Republic, Malaysia, Mongolia, Maldives, Myanmar, Nauru, New Zealand, Pakistan, Papua New Guinea, Philippines, Samoa, Singapore, Solomon, Iceland, Sri Lanka, Thailand, Tonga, Vanuatu, Vietnam. (32 countries including Nepal)

Tariff Rate of Foreign Postal Parcel

S.N.	ISO Code	Operator	Route	Previous Rate			Current Rate		
				Rate up to 1 kg	Rate of extra 1 kg	Rate of extra 1/2 kg	Rate up to 1 kg	Rate of extra 1 kg	Rate of extra 1/2 kg
1.	AF	Afghanistan	India	1538/-	298/-	252/-	1750/-	420/-	355/-
2.	AL	Albania	U.A.E.	1346/-	425/-	247/-	1620/-	580/-	320/-
3.	DZ	Algeria	U.A.E.	1431/-	516/-	308/-	1670/-	725/-	410/-
4.	AO	Angola	U.A.E.	1394/-	538/-	304/-	1710/-	730/-	385/-
5.	AG	Antigua and Barbuda	U.A.E.	1466/-	750/-	408/-	1750/-	1190/-	615/-
6.	AR	Argentina	U.A.E.	2123/-	1022/-	587/-	2485/-	1435/-	790/-
7.	AM	Armenia	India	1739/-	506/-	310/-	2500/-	1330/-	715/-
8.	AW	Aruba	Germany	1538/-	849/-	466/-	2370/-	1625/-	855/-
9.	AU	Australia	Direct	1412/-	640/-	386/-	1905/-	1035/-	655/-
10.	AT	Austria	U.A.E.	1466/-	456/-	368/-	1870/-	630/-	345/-
11.	AZ	Azerbaijan	U.A.E.	1403/-	384/-	259/-	1510/-	510/-	320/-
12.	BS	Bahamas	Germany	1484/-	812/-	439/-	1850/-	1190/-	625/-
13.	BH	Kingdom of Bahrain	India	1092/-	265/-	177/-	1120/-	345/-	210/-
14.	BD	Bangladesh	Direct	865/-	158/-	139/-	795/-	255/-	230/-
15.	BB	Barbados	Germany	1485/-	797/-	432/-	1900/-	1165/-	615/-
16.	BY	Belarus	U.A.E.	1288/-	489/-	309/-	1895/-	755/-	485/-
17.	BE	Belgium	India	2114/-	515/-	314/-	2375/-	670/-	385/-
18.	BZ	Belize	U.A.E.	1783/-	976/-	536/-	2415/-	1425/-	770/-
19.	BJ	Benin	U.A.E.	1276/-	541/-	307/-	1385/-	730/-	390/-
20.	BT	Bhutan	Direct	934/-	106/-	91/-	985/-	170/-	150/-
21.	BO	Bolivia	Germany	2257/-	1037/-	588/-	2545/-	1460/-	790/-
22.	BA	Bosnia and Herzegovina (JP BH Posta)	Germany	1305/-	485/-	285/-	1690/-	710/-	400/-

ANNUAL REPORT 2023

S.N.	ISO Code	Operator	Route	Previous Rate			Current Rate		
				Rate up to 1 kg	Rate of extra 1 kg	Rate of extra 1/2 kg	Rate up to 1 kg	Rate of extra 1 kg	Rate of extra 1/2 kg
23.	BA	Bosnia and Herzegovina	Germany	1305/-	485/-	285/-	1505/-	690/-	385/-
24.	BA	Bosnia and Herzegovina (Mostar)	Germany	1305/-	485/-	285/-	1495/-	690/-	380/-
25.	BW	Botswana	India	1492/-	528/-	312/-	2045/-	795/-	455/-
26.	BR	Brazil	U.A.E.	1846/-	968/-	572/-	2460/-	1360/-	785/-
27.	BN	Brunei Darussalam	Thailand	1007/-	288/-	179/-	1035/-	375/-	215/-
28.	BG	Republic of Bulgaria	U.A.E.	1252/-	423/-	253/-	1470/-	585/-	330/-
29.	BF	Burkina Faso	U.A.E.	1540/-	624/-	383/-	1760/-	860/-	505/-
30.	BI	Burundi	India	1452/-	426/-	262/-	1840/-	660/-	385/-
31.	KH	Cambodia	Thailand	954/-	235/-	162/-	995/-	300/-	195/-
32.	CM	Cameroon	U.A.E.	1308/-	512/-	293/-	1585/-	700/-	385/-
33.	CA	Canada	Germany	1817/-	878/-	538/-	2490/-	1325/-	810/-
34.	CV	Cape Verde	Germany	1533/-	691/-	389/-	1940/-	1015/-	550/-
35.	CF	Central African Republic	India	1492/-	459/-	264/-	1600/-	610/-	330/-
36.	TD	Chad	U.A.E.	1322/-	476/-	283/-	1390/-	620/-	345/-
37.	CL	Chile	U.A.E.	2003/-	1098/-	633/-	2720/-	1615/-	930/-
38.	CN	China	Thailand	1238/-	346/-	243/-	1585/-	605/-	385/-
39.	HK	Hong Kong	Direct	1240/-	298/-	197/-	1715/-	440/-	325/-
40.	MO	Macau China	Thailand	1076/-	287/-	187/-	1660/-	440/-	285/-
41.	CO	Colombia	Germany	1894/-	979/-	568/-	2445/-	1445/-	820/-
42.	KM	Comoros	U.A.E.	1160/-	488/-	292/-	1270/-	630/-	340/-
43.	CG	Republic of the Congo	India	1234/-	473/-	274/-	1380/-	665/-	365/-
44.	CR	Costa Rica	Germany	1802/-	965/-	546/-	2535/-	1455/-	820/-

ANNUAL REPORT 2023

S.N.	ISO Code	Operator	Route	Previous Rate			Current Rate		
				Rate up to 1 kg	Rate of extra 1 kg	Rate of extra 1/2 kg	Rate up to 1 kg	Rate of extra 1 kg	Rate of extra 1/2 kg
45.	CI	Ivory Coast Republic	Germany	1566/-	700/-	393/-	1970/-	1020/-	550/-
46.	HR	Croatia	U.A.E	1310/-	454/-	266/-	1420/-	610/-	325/-
47.	CU	Cuba	Germany	1703/-	794/-	458/-	2155/-	1300/-	720/-
48.	CW	Curacao	Germany	-	-	-	2210/-	1325/-	740/-
49.	CY	Cyprus	India	1170/-	339/-	206/-	1430/-	445v	250/-
50.	CZ	Czech Republic	U.A.E.	1346/-	477/-	281/-	1685/-	770/-	425/-
51.	KP	Democratic People's Republic of Korea	India	1443/-	429/-	263/-	1485/-	515/-	300/-
52.	CD	Democratic Republic of the Congo	India	1395/-	486/-	289/-	1735/-	745/-	415/-
53.	DK	Denmark	Direct	1413/-	412/-	245/-	1770/-	655/-	400/-
54.	DJ	Djibouti	U.A.E.	1080/-	336/-	204/-	1310/-	465/-	270/-
55.	DM	Dominica	U.A.E.	1497/-	769/-	413/-	1845/-	1205/-	630/-
56.	DO	Dominican Republic	Germany	1484/-	812/-	439/-	1805/-	1185/-	620/-
57.	EC	Ecuador	Germany	2054/-	985/-	556/-	2390/-	1420/-	765/-
58.	EG	Egypt	India	1412/-	415/-	280/-	1505/-	550/-	345/-
59.	SV	El Salvador	Germany	1691/-	924/-	505/-	2005/-	1340/-	705/-
60.	GQ	Equatorial Guinea	U.A.E.	1456/-	740/-	403/-	1460/-	895/-	470/-
61.	ER	Eritrea	U.A.E.	1274/-	354/-	222/-	1500/-	485/-	285/-
62.	EE	Estonia	Germany	1407/-	506/-	293/-	1800/-	735/-	405/-
63.	SZ	Eswatini	India	1210/-	494/-	285/-	1460/-	745/-	410/-
64.	ET	Ethiopia	India	1092/-	373/-	244/-	1480/-	915/-	535/-
65.	FJ	Fiji	India	1572/-	822/-	448/-	1825/-	1050/-	555/-

ANNUAL REPORT 2023

S.N.	ISO Code	Operator	Route	Previous Rate			Current Rate		
				Rate up to 1 kg	Rate of extra 1 kg	Rate of extra 1/2 kg	Rate up to 1 kg	Rate of extra 1 kg	Rate of extra 1/2 kg
66.	FI	Finland	U.A.E.	1829/-	498/-	302/-	2295/-	705/-	405/-
67.	AX	Aland Island	U.A.E.	-	-	-	1220/-	660/-	350/-
68.	FR	France	Direct	1607/-	453/-	266/-	1925/-	715/-	430/-
69.	PF	French Polynesia	India	1773/-	562/-	320/-	2570/-	1290/-	675/-
70.	NC	New Caledonia	Thailand	1767/-	705/-	387/-	2360/-	880/-	475/-
71.	WF	Wallis and Futuna Islands	Hong-Kong	1711/-	709/-	388/-	1890/-	935/-	490/-
72.	GA	Gabon	U.A.E.	1464/-	592/-	358/-	1645/-	800/-	460/-
73.	GM	Gambia	U.A.E.	1571/-	629/-	349/-	1735/-	840/-	435/-
74.	GE	Georgia	U.A.E.	1510/-	536/-	386/-	200/-	635/-	435/-
75.	DE	Germany	Direct	1716/-	441/-	266/-	2315/-	715/-	450/-
76.	GH	Ghana	India	1591/-	572/-	342/-	2170/-	870/-	505/-
77.	GR	Greece	U.A.E.	1417/-	453/-	288/-	1585/-	620/-	370/-
78.	GD	Grenada	U.A.E.	1490/-	774/-	420/-	1530/-	840/-	450/-
79.	GT	Guatemala	Germany	1576/-	904/-	485/-	2070/-	1475/-	760/-
80.	GN	Guinea	U.A.E.	1465/-	622/-	353/-	1705/-	885/-	480/-
81.	GW	Guyana-Bissau	U.A.E.	1944/-	643/-	358/-	2055/-	850/-	440/-
82.	GY	Guyana	U.A.E.	1661/-	878/-	482/-	2180/-	1275/-	690/-
83.	HT	Haiti	Germany	1529/-	825/-	447/-	1825/-	1195/-	620/-
84.	HN	Republic of Honduras	Germany	1674/-	923/-	509/-	2000/-	1330/-	705/-
85.	HU	Hungary	U.A.E.	1475/-	478/-	295/-	1925/-	690/-	410/-
86.	IS	Iceland	Germany	1684/-	574/-	335/-	2585/-	860/-	495/-
87.	IN	India	Direct	1113/-	149/-	128/-	1350/-	265/-	235/-
88.	ID	Indonesia	Thailand	1243/-	409/-	287/-	1585/-	595/-	415/-
89.	IR	Iran (Islamic Republic)	India	1291/-	343/-	232/-	1885/-	430/-	300/-

ANNUAL REPORT 2023

S.N.	ISO Code	Operator	Route	Previous Rate			Current Rate		
				Rate up to 1 kg	Rate of extra 1 kg	Rate of extra 1/2 kg	Rate up to 1 kg	Rate of extra 1 kg	Rate of extra 1/2 kg
90.	IQ	Iraq	India	1009/-	290/-	180/-	1070/-	365/-	210/-
91.	IE	Ireland	India	1560/-		535/-	311/-	1795/-	700/-
92.	IL	Israel	India	1321/-	347/-	219/-	1535/-	465/-	275/-
93.	IT	Italy	India	1466/-	462/-	278/-	1725/-	620/-	355/-
94.	JM	Jamaica	Germany	1528/-	856/-	468/-	2160/-	1285/-	700/-
95.	JP	Japan	Direct	1317/-	370/-	234/-	1455/-	585/-	380/-
96.	JO	Jordan	India	1243/-	334/-	212/-	1255/-	535/-	300/-
97.	KZ	Kazakhstan	U.A.E.	1215/-	465/-	313/-	2060/-	825/-	595/-
98.	KE	Kenya	India	1251/-	374/-	233/-	1480/-	570/-	330/-
99.	KI	Kiribati	Thailand	1592/-	876/-	471/-	1600/-	890/-	475/-
100.	KR	Republic of Korea	Thailand	1476/-	417/-	261/-	1695/-	570/-	335/-
101.	KW	Kuwait	India	1185/-	265/-	170/-	1165/-	350/-	200/-
102.	KG	Kyrgyzstan	India	1418/-	559/-	3333/-	1430/-	675/-	385/-
103.	LA	Lao People's Democratic Republic	India	1204/-	359/-	247/-	1265/-	445/-	295/-
104.	LV	Latvia	U.A.E.	1192/-	473/-	282/-	1475/-	690/-	405/-
105.	LB	Lebanon	India	1209/-		340/-	213/-	1340/-	455/-
106.	LS	Lesotho	India	1385/-	512/-	301/-	1700/-	795/-	445/-
107.	LR	Liberia	U.A.E.	1310/-	548/-	307/-	2030/-	1380/-	715/-
108.	LI	Liechtenstein	U.A.E.	-	-	-	1705/-	670/-	370/-
109.	LT	Louisiana	Germany	1418/-	494/-	286/-	1885/-	715/-	400/-
110.	LU	Luxembourg	U.A.E.	1403/-	494/-	286/-	1730/-	660/-	350/-
111.	MG	Madagascar	India	1507/-	427/-	256/-	1800/-	620/-	345/-
112.	MW	Malawi	India	1383/-	480/-	294/-	1700/-	700/-	410/-
113.	MY	Malaysia	Direct	948/-	242/-	158/-	1220/-	420/-	290/-

ANNUAL REPORT 2023

S.N.	ISO Code	Operator	Route	Previous Rate			Current Rate		
				Rate up to 1 kg	Rate of extra 1 kg	Rate of extra 1/2 kg	Rate up to 1 kg	Rate of extra 1 kg	Rate of extra 1/2 kg
114.	MV	Maldives	India	962/-	211/-	143/-	1210/-	350/-	210/-
115.	ML	Gardener	Germany	1472/-	678/-	389/-	1760/-	945/-	525/-
116.	MT	Malta	U.A.E.	1460/-	492/-	307/-	1685/-	685/-	405/-
117.	MR	Mauritania	Germany	1574/-	670/-	386/-	1980/-	950/-	530/-
118.	MU	Mauritius	India	1167/-	369/-	225/-	1420/-	595/-	335/-
119.	MX	Mexico	Germany	1635/-	940/-	516/-	2120/-	1385/-	740/-
120.	MD	Moldova	India	1433/-	462/-	298/-	1725/-	595/-	385/-
121.	MN	Mongolia	Thailand	1212/-	386/-	254/-	1750/-	670/-	430/-
122.	ME	Montenegro	U.A.E.	1603/-	441/-	261/-	1700/-	585/-	3201 369/-
123.	MA	Morocco	India	1369/-	541/-	311/-	1650/-	760/-	415/-
124.	MZ	Mozambique	India	1594/-	543/-	316/-	1880/-	765/-	435/-
125.	MM	Myanmar	Thailand	972/-	222/-	148/-	1020/-	285/-	170/-
126.	NA	Namibia	India	1334/-	540/-	309/-	1675/-	805/-	440/-
127.	NR	Nauru	Thailand	1502/-	786/-	426/-	1515/-	950/-	495/-
128.	NL	The Netherlands	Direct	1413/-	452/-	269/-	1720/-	715/-	440/-
129.	BQ	Bonaire, St. Eustatius and Saba	Germany	-	-	-	2125/-	1305/-	720/-
130.	NZ	New Zealand	India	1869/-	850/-	508/-	2440/-	1240/-	720/-
131.	CK	Cook Islands	Thailand	1586/-	870/-	468/-	2465/-	1265/-	730/-
132.	NI	Nicaragua	Germany	1710/-	943/-	527/-	2065/-	1360/-	735/-
133.	NE	Niger	U.A.E.	1274/-	563/-	332/-	1420/-	785/-	440/-
134.	NG	Nigeria	India	1542/-	565/-	344/-	2010/-	850/-	500/-
135.	MK	North Macedonia	India	1375/-	526/-	302/-	1480/-	540/-	305/-
136.	NO	Norway	U.A.E.	1836/-	542/-	329/-	2410/-	770/-	450/-

ANNUAL REPORT 2023

S.N.	ISO Code	Operator	Route	Previous Rate			Current Rate		
				Rate up to 1 kg	Rate of extra 1 kg	Rate of extra 1/2 kg	Rate up to 1 kg	Rate of extra 1 kg	Rate of extra 1/2 kg
137.	OM	Oman	India	1060/-	204/-	142/-	1170/-	285/-	175/-
138.	PK	Pakistan	Direct	933/-	186/-	138/-	1095/-	460/-	310/-
139.	PS	Palestine	India	-	-	-	1080/-	430/-	240/-
140.	PA	Republic in Panama	Germany	1604/-	900/-	489/-	1940/-	1325/-	695/-
141.	PG	Papua New Guinea	India	1532/-	623/-	378/-	2390/-	960/-	595/-
142.	PY	Paraguay	U.A.E.	1785/-	984/-	560/-	2045/-	1405/-	770/-
143.	PE	Peru	Germany	1881/-	1049/-	595/-	2600/-	1550/-	875/-
144.	PH	Philippines	Thailand	1102/-	352/-	235/-	1105/-	465/-	290/-
145.	PL	Poland	U.A.E.	1391/-	481/-	293/-	1840/-	695/-	410/-
146.	PT	Portugal	Germany	1703/-	551/-	323/-	2150/-	790/-	450/-
147.	QA	Qatar	Direct	1042/-	257/-	169/-	1060/-	415/-	280/-
148.	RO	Romania	U.A.E.	1378/-	450/-	282/-	2105/-	680/-	425/-
149.	RU	Russian Federation	Direct	1476/-	434/-	306/-	2325/-	775/-	585/-
150.	RW	Rwanda	India	1122/-	398/-	238/-	1450/-	620/-	355/-
151.	KN	St. Christopher and Nevis	U.A.E.	1545/-	769/-	419/-	2145/-	1410/-	730/-
152.	LC	Saint Lucia	U.A.E.	1535/-	772/-	421/-	18880/-	1205/-	630/-
153.	VC	Saint Vincent and the Grenadines	U.A.E.	1582/-	832/-	465/-	2255/-	1505/-	810/-
154.	WS	Samoa	Thailand	1627/-	911/-	512/-	1750/-	1115/-	635/-
155.	ST	Sao Tome and Principe	U.A.E.	1508/-	792/-	429/-	1510/-	860/-	455/-
156.	SA	Saudi Arabia	U.A.E.	1025/-	290/-	198/-	11480/-	490/-	305/-
157.	SN	Senegal	U.A.E.	1498/-	633/-	359/-	1650/-	865/-	465/-
158.	RS	Serbia	U.A.E.	1603/-	441/-	261/-	1825/-	595/-	330/-

ANNUAL REPORT 2023

S.N.	ISO Code	Operator	Route	Previous Rate			Current Rate		
				Rate up to 1 kg	Rate of extra 1 kg	Rate of extra 1/2 kg	Rate up to 1 kg	Rate of extra 1 kg	Rate of extra 1/2 kg
159.	SC	Cyclicis	India	1169/-	450/-	260/-	1180/-	515/-	285/-
160.	SL	Sierra Leone	U.A.E.	1467/-	646/-	366/-	1680/-	890/-	480/-
161.	SG	Singapore	Direct	1022/-	261/-	170/-	1210/-	440/-	300/-
162.	SX	St. Martin	Germany	-	-	-	1715/-	1135/-	590/-
163.	SK	Slovakia	U.A.E.	1291/-	456/-	265/-	1485/-	620/-	340/-
164.	SI	Slovenia	U.A.E.	1382/-	533/-	304/-	1510/-	630/-	345/-
165.	SB	Solomon Islands	Thailand	1482/-	766/-	416/-	1495/-	825/-	440/-
166.	SO	Somalia	India	10008/-	363/-	201/-	1015v	450/-	250/-
167.	ZA	South Africa	India	1266/-	497/-	296/-	1875/-	825/-	480/-
168.	SS	South Sudan	India	-	-	-	1105/-	520/-	285/-
169.	ES	Spain	U.A.E.	1517/-	531/-	305/-	1920/-	760/-	415/-
170.	LK	Sri Lanka	India	886/-	192/-	130/-	1020/-	305/-	180/-
171.	LY	Libya	U.A.E.	1293/-	464/-	281/-	1540/-	670/-	390/-
172.	SD	Sudan	India	1194/-	365/-	224/-	1495/-	550/-	315/-
173.	SR	Suriname	Germany	1497/-	825/-	450/-	1855/-	1225/-	645/-
174.	SE	Sweden	U.A.E.	1730/-	503/-	300/-	2135/-	710/-	400/-
175.	CH	Switzerland	Direct	1411/-	443/-	265/-	1670/-	700/-	430/-
176.	SY	Syrian Arab Republic	U.A.E.	1222/-	373/-	241/-	1245/-	495/-	295/-
177.	TJ	Tajikistan	India	1355/-	565/-	336/-	1380/-	580/-	350/-
178.	TZ	Tanzania	India	1230/-	410/-	252/-	1415/-	595/-	340/-
179.	TH	Thailand	Direct	906/-	215/-	157/-	1065/-	360/-	275/-
180.	TL	Timor –Leste (Democratic Republic)	Thailand	-	-	-	1090/-	505/-	275/-
181.	TG	Togo	U.A.E.	1422/-	557/-	318/-	1695/-	785/-	425/-
182.	TO	Tonga	Thailand	1560/-	844/-	455/-	1740/-	1005/-	535/-

ANNUAL REPORT 2023

S.N.	ISO Code	Operator	Route	Previous Rate			Current Rate		
				Rate up to 1 kg	Rate of extra 1 kg	Rate of extra 1/2 kg	Rate up to 1 kg	Rate of extra 1 kg	Rate of extra 1/2 kg
183.	TT	Trinidad and Tobago	Germany	1586/-	835/-	460/-	1880/-	1210/-	640/-
184.	TN	Tunisia	U.A.E.	1161/-	488/-	295/-	1845/-	780/-	490/-
185.	TR	Turkey	U.A.E.	1233/-	432/-	274/-	1925/-	680/-	445/-
186.	TM	Turkmenistan	U.A.E.	1125/-	325/-	206/-	1135/-	450/-	260/-
187.	TV	Tuvalu	Thailand	1546/-	830/-	448/-	1560/-	920/-	485/-
188.	UG	Uganda	India	1245/-	386/-	236/-	1375/-	575/-	325/-
189.	UA	Ukraine	U.A.E.	1504/-	441/-	271/-	2290/-	600/-	375/-
190.	AE	United Arab Emirates	Direct	960/-	234/-	155/-	1000/-	385/-	265/-
191.	GB	United Kingdom	Direct	1699/-	567/-	377/-	2450/-	945/-	655/-
192.	AI	Anguilla	India	1340/-	668/-	367/-	1800v	1185/-	615/-
193.	AC	Ascension	India	1319/-	571/-	320/-	1505/-	920/-	485/-
194.	BM	Bermuda	U.S.A.	1557/-	751/-	415/-	2745v	1795/-	940/-
195.	VG	British Virgin Islands	U.A.E.	1556/-	825/-	446/-	1815/-	1210/-	630/-
196.	KY	Cayman Islands	U.A.E.	1448/-	610/-	484/-	2215/-	1390/-	765/-
197.	FK	Falkland Islands (Malvinas)	India	1851/-	992/-	529/-	2065/-	1275/-	660/-
198.	GI	Gibraltar	India	1330/-	595/-	339/-	1390/-	725/-	400/-
199.	MS	Montserrat	India	1485/-	742/-	404/-	1700/-	1135/-	590/-
200.	PN	Pitcairn Island	Thailand	2174/-	986/-	668/-	2935/-	1730/-	1080/-
201.	SH	St. Helena	Thailand	1449/-	668/-	367/-	1860/-	1180/-	615/-
202.	TA	Tristan da Cunha	Thailand	1388/-	672/-	371/-	1780v	1225/-	640/-
203.	TC	Turks and Caicos Islands	India	1492/-	776/-	421/-	1705/-	1140/-	595/-
204.	US	United States of America	Direct	1710/-	934/-	580/-	2200/-	1420/-	920/-

S.N.	ISO Code	Operator	Route	Previous Rate			Current Rate		
				Rate up to 1 kg	Rate of extra 1 kg	Rate of extra 1/2 kg	Rate up to 1 kg	Rate of extra 1 kg	Rate of extra 1/2 kg
205.	UY	Uruguay	Germany	1886/-	966/-	529/-	2730/-	1515/-	815/-
206.	UZ	Uzbekistan	U.A.E.	1522/-	596/-	349/-	2285/-	600/-	390/-
207.	VU	Vanuatu	Thailand	1458/-	742/-	414/-	1510/-	910/-	505/-
208.	VA	Vatican City	U.A.E.	1352/-	461/-	270/-	1495/-	645/-	355/-
209.	VE	Venezuela (Bolivarian Republic)	Germany	1705/-	877/-	491/-	1990/-	1260/-	670/-
210.	VN	Vietnam	Thailand	1004/-	278/-	193/-	1100/-	350/-	235/-
211.	YE	Yemen	India	1196/-	372/-	262/-	1205/-	515/-	330/-
212.	ZM	Zambia	India	1261/-	482/-	288/-	1440/-	710/-	395/-
213.	ZW	Zimbabwe	India	1511/-	520/-	327/-	1795/-	765/-	455/-
214.	TW	Taiwan	Hong-Kong	1362/-	343/-	221/-	1440/-	460/-	315/-

Note : The notice published earlier in the Nepal Gazette for the inland postal tariff rate and foreign postal tariff rate (excluding foreign debt service) has been hereby repealed.

INTERNATIONAL EMS RATE LIST OF THE YEAR 2021

S.N.	Destination Country	Up to 500 gram	Additional per 500 gram	Estimated Delivery time
1	AUSTRALIA	1800.00	500.00	5-7
2	BANGLADESH	1200.00	300.00	4-7
3	BHUTAN	1000.00	350.00	3-7
4	BRUNEI	1100.00	300.00	7-10
5	CANADA	1800.00	500.00	7-10
6	CHINA	1400.00	400.00	7-10
7	DENMARK	1600.00	400.00	7-10
8	EGYPT	1300.00	350.00	7-10
9	FIJI	1400.00	400.00	7-10
10	GERMANY	1800.00	500.00	7-10
11	HONGKONG	1200.00	350.00	5-7
12	INDIA	800.00	250.00	3-15
13	INDONESIA	1200.00	350.00	7-10
14	IRELAND	1500.00	400.00	7-15
15	ISRAEL	1700.00	400.00	7-10
16.	ITALY	1600.00	400.00	4-7
17.	JAPAN	1400.00	400.00	7-15
18.	KUWAIT	1400.00	300.00	5-10
19.	MALAYSIA	1200.00	300.00	7-10
20.	MALDIVES	1000.00	300.00	7-10
21.	MYAMNAR	1200.00	300.00	7-10
22.	NETHERLANDS	1800.00	400.00	7-10
23.	NEWZEALAND	1800.00	500.00	7-10
24.	NORWAY	2000.00	500.00	5-10
25.	PAKISTAN	1200.00	300.00	7-10
26.	PHILIPPINES	1400.00	400.00	3-10
27.	QATAR	1200.00	300.00	4-7
28.	SINGAPORE	1500.00	350.00	4-7
29.	SOUTH KOREA	1400.00	400.00	7-10
30.	SPAIN	1600.00	500.00	7-10

S.N.	Destination Country	Up to 500 gram	Additional per 500 gram	Estimated Delivery time
31.	SRI LANKA	1100.00	300.00	7-10
32.	SWITZERLAND	1800.00	500.00	3-7
33.	THAILAND	1200.00	300.00	7-10
34.	TURKEY	1400.00	400.00	5-7
35.	UAE	1500.00	350.00	7-10
36.	UK	1800.00	500.00	7-10
37.	USA	1800.00	500.00	7-10
38.	YEMEN	1300.00	400.00	7-10
39.	PORTUGAL	1800.00	400.00	7-15

MISCELLANEOUS

1.	Inquiry Fee per article	Rs. Free
2.	Custom clearance fee if duty is levied	10/-
3.	Certificate of posting per 3 articles	10/-
4.	Registration Fee per article	130/-
5.	International Reply Coupon (purchase per coupon postage stamp equivalent to NPR.)	60/-
6.	International Reply Coupon (Sale) per coupon	150/-
7.	Acknowledgment fee	15/-
8.	Attested receipt of registered article/per article	10/-
9.	Recall of posted per article	20/-
10.	Change of address per article (before the dispatched of mails)	20/-
11.	Repacking charge	
	a) Parcel without customs duty	Free
	b) Parcel with duty up to NPR. 50/-	15/-
	c) Parcel with duty up to NPR. 100/-	20/-
	d) Parcel with duty up to NPR. 200/-	25/-
	e) Parcel above NPR. 201 up to NPR. 500 (parcel with customs)	30/-
	f) Parcel with duty above NPR. 501/-	50/-
12.	Insurance fee up to 300 for India	20/-
13.	There after each NPR. 100 or part	10/-
14.	Money Order Commission up to NPR. 200/-) For India	10/-
15.	There after each NPR. 100/- or Part	6/-
16.	Money order form per copy for India	5/-

NOTE:

1. No repacking charge shall be levied if the parcel is being delivered through the same post office where the parcel is unpacked for the customs purposes.
2. Registration fee for insurance will be charged separately.
3. Rates not incurred in the above will be charged as per miscellaneous rate specified for inland postage.
4. As per Bucharest Congress provision, for those countries to which 0.5 SDR Registration fee is not being paid based on bilateral agreement, NPR 60 is charged.

(This registration fee shall be active after bilateral agreement being signed)

OPERATIONAL READINESS FOR E-COMMERCE (ORE) PROJECT (2022-2025)

One of the key objectives of the Istanbul World Postal Strategy (IWPS) adopted by the 26th UPU Congress is to improve the interoperability of network infrastructure by ensuring quality of service, efficient and secure supply chains, development of standards and information & communications technologies and streamlined operational processes and regulations.

In line with this objective, and based on the regional priorities identified during the regional strategy conference in 2015, the UPU International Bureau (IB) launched the Operational readiness for e-commerce (ORE) project. The goals of this regional co-operation project is to co-ordinate the necessary actions to improve quality of service and to help designated operators (DO's) improve their operational readiness for e-commerce through an integrated postal supply chain approach. Two cycles (2011-2020 and 2020-2022) of the project are already completed and ORE 3 (2022-2025) is now in action.

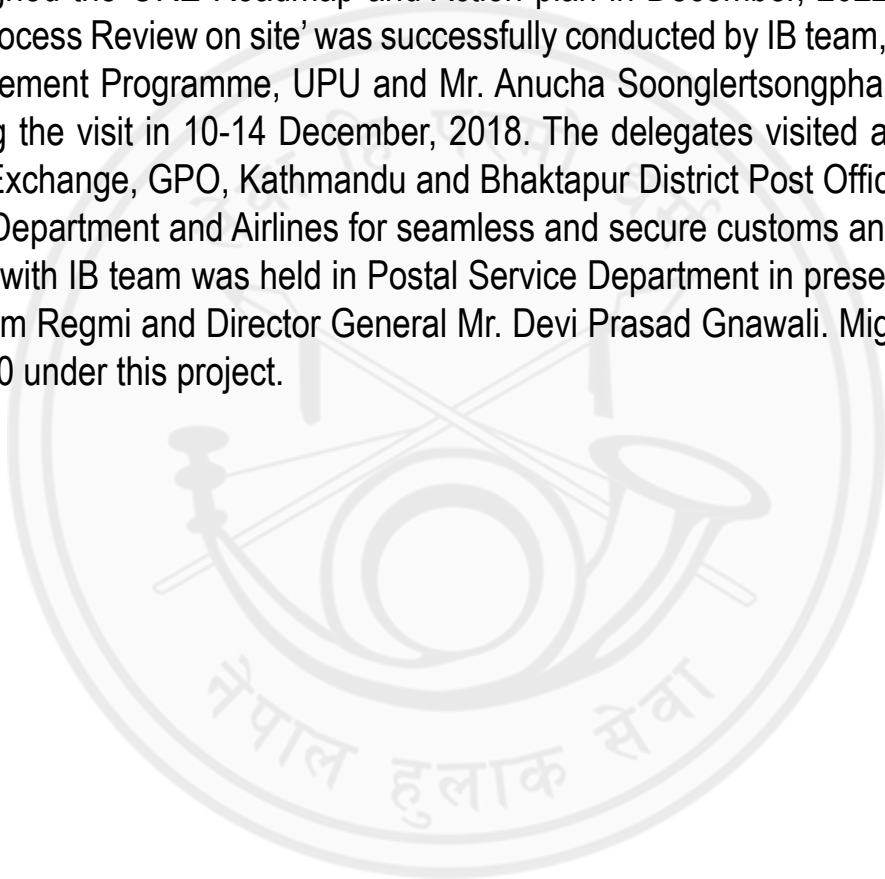
KEY OBJECTIVES AND AREAS OF ORE 3 PROJECT IN 2022-2025

- Comply with minimum regulatory, operational and technical requirements.
- Ensure data capture and EDI transmission using the available systems and tools.
- Improve electronic data provision and quality.
- Receive certification in the areas of quality management addressing and postal security.
- Enhance the use of performance monitoring and reporting systems and tools.
- Improve quality of service.
- Improve supply chain integration for e-commerce development.

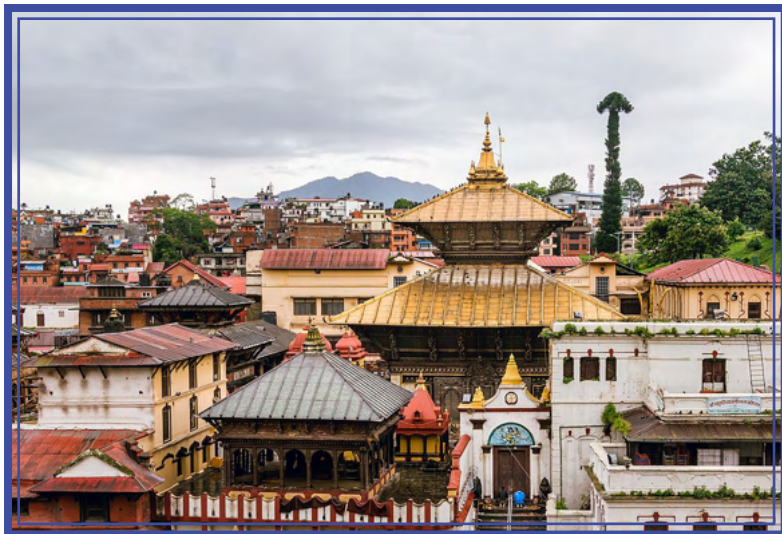
Main Expected Outcomes by 2025

- Increased end-to-end measurability.
- Maximized end-to-end mail visibility.
- Improved end-to-end performance for letter post items and parcels.
Improved on-time end-to-end service performance rate for EMS.
Reduced customs and transport average times.
- Improved compliance with EAD requirements.
- Implemented up-to-date tools and systems.

Nepal post has duly signed the ORE Roadmap and Action plan in December, 2022. In line with all ORE 3 project activities, the 'Process Review on site' was successfully conducted by IB team, lead by Mr. Chokri Ellili, Head of Quality Improvement Programme, UPU and Mr. Anucha Soonglertsongpha, ORE Regional Project Facilitator, APPU during the visit in 10-14 December, 2018. The delegates visited all the mail flow process thoroughly in Office of Exchange, GPO, Kathmandu and Bhaktapur District Post Office and conducted a joint meeting with Customs Department and Airlines for seamless and secure customs and transport. The kick-off and debriefing meeting with IB team was held in Postal Service Department in presence of the then Director General Mr. Ananda Ram Regmi and Director General Mr. Devi Prasad Gnawali. Migration from IPS Light to IPS.Post is done in 2020 under this project.



WORLD HERITAGE SITES OF NEPAL LISTED BY UNESCO



Pashupatinath Temple, Kathmandu



Lumbini, Rupandehi



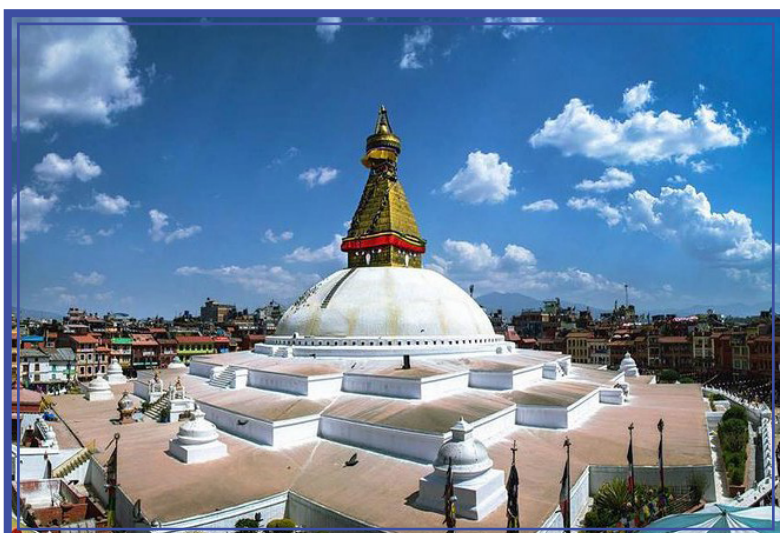
Swayambhunath, Kathmandu



Patan Darbar Square, Lalitpur



Bhaktapur Darbar Square, Bhaktapur



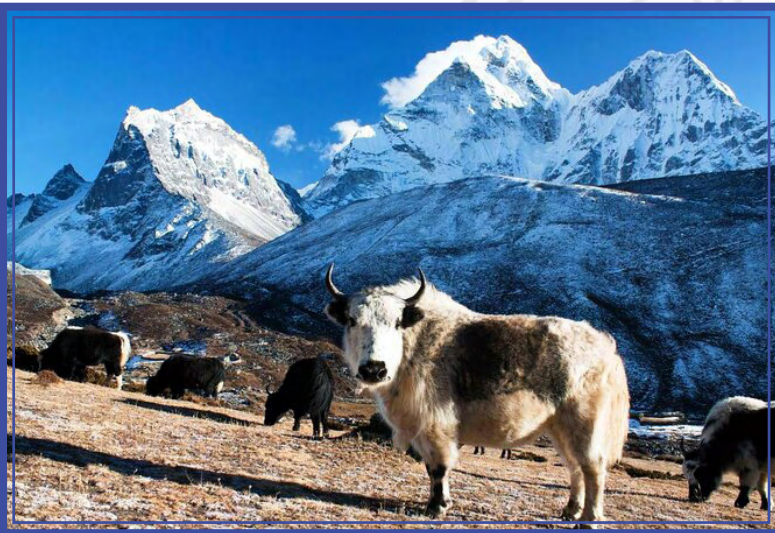
Boudhanath Stupa, Kathmandu



Kathmandu Durbar Square, Kathmandu



Changunarayan Temple, Bhaktapur



Sagarmatha National Park, Solukhumbu



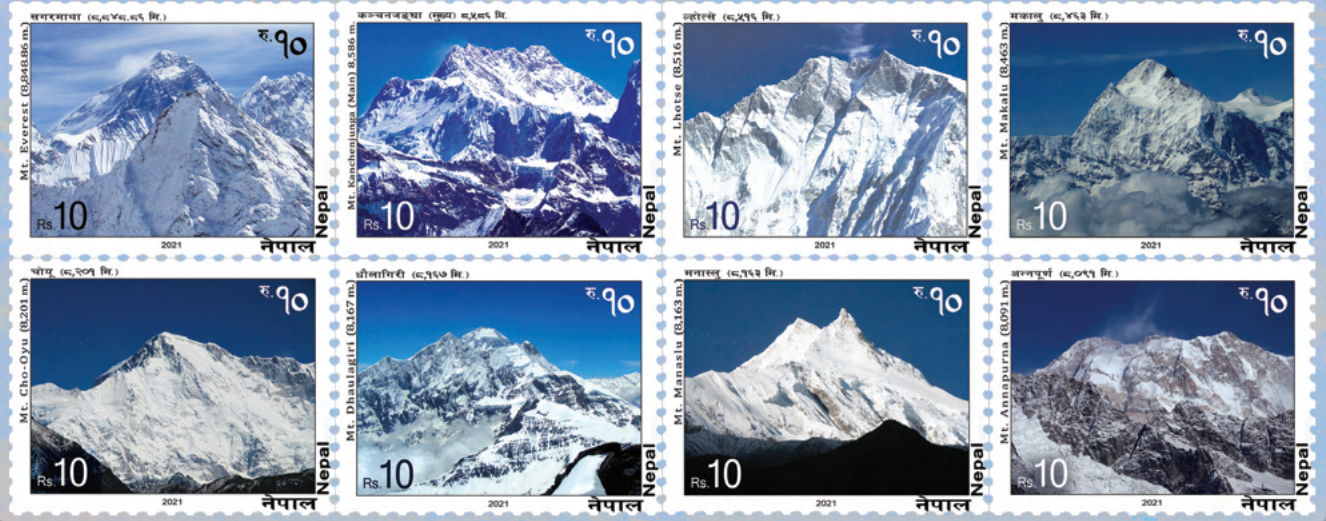
Chitwan National Park, Chitwan



Introducing Nepal Through Postage Stamps



Mountains Above 8000 meters on Postage Stamps



नेपाल सरकार, सञ्चार तथा सूचना प्रविधि मन्त्रालय, हुलाक सेवा विभाग, बबरमहल, काठमाडौं
Government of Nepal, Ministry of Communication and Information Technology, Department of Postal Services

**Mention the postal
code compulsorily
Refer to www.gpo.gov.np
for postal code details.**

**If the 5-digit code is mentioned on
the envelope, the letter reaches to
the address reliably.**



**Nepal Post
Department of Postal Service
Babarmahal-44605, Kathmandu**



NEPAL POST HAS BEED OFFERING:



EXPRESS MAIL SERVICE

(Links over the major destinations of the world)



- AFFRordable
- RILiable
- FASTER
- GUARANTED



THE WORLDWIDE POSTAL COURIER NETWORK



For details, please contact:

Express Mail Service, General Post Office, Dillibazar, Kathamandu, Nepal.
Tel: 01-4542803, E-mail: emsgpo7@gmail.com, administrations@gpo.gov.np